

Student Orientation to CourseDen (WebCT Vista 8) Learning Module

The *Student Orientation to CourseDen (WebCT Vista 8)* provides students with a brief introduction to the student interface and several of the most commonly used tools, including Assessments, Assignments, and Discussions.

Note: Do not try to open or unzip the file. The zipped content package file will be imported into an existing CourseDen (WebCT Vista 8) section.

Students must have the Flash player installed in order to view the tutorials.

To download go to: <http://www.westga.edu/~distance/webct1/help/downloads.html>

Although institutions can customize the HTML and image files to meet their particular needs, the files cannot be made publicly available through an external Web address. They are for use only within the CourseDen (WebCT Vista 8) course environment.

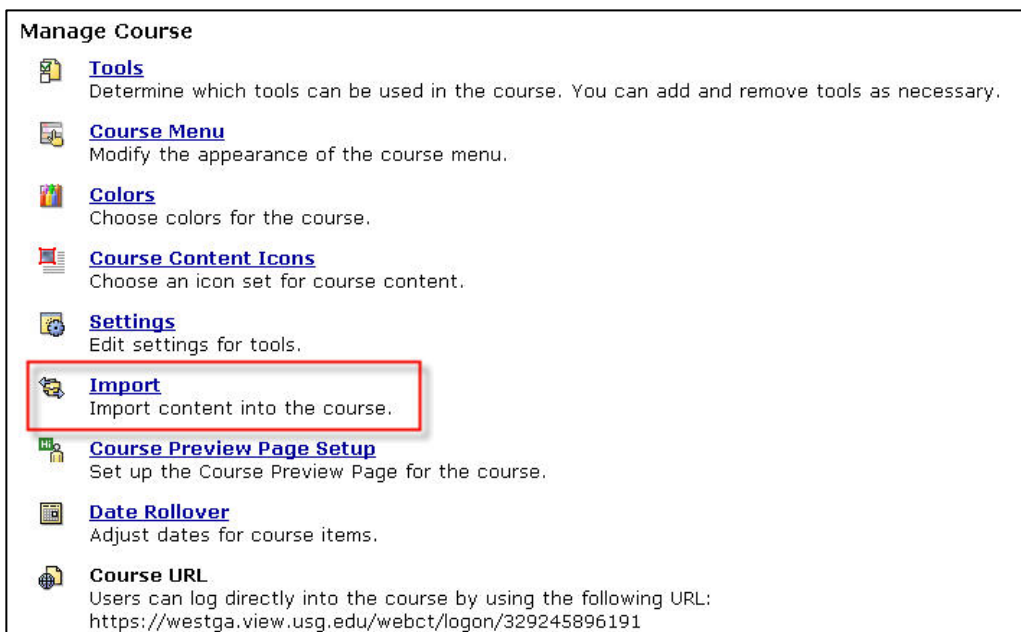
The zipped content package file (Student_Orientation_Module.zip) can be imported into an existing WebCT section by the section designer as described below. CourseDen (WebCT Vista 8) customers can also incorporate the module into templates. Refer to the appropriate Administrator's Guide for details on other import options.

The Import Process

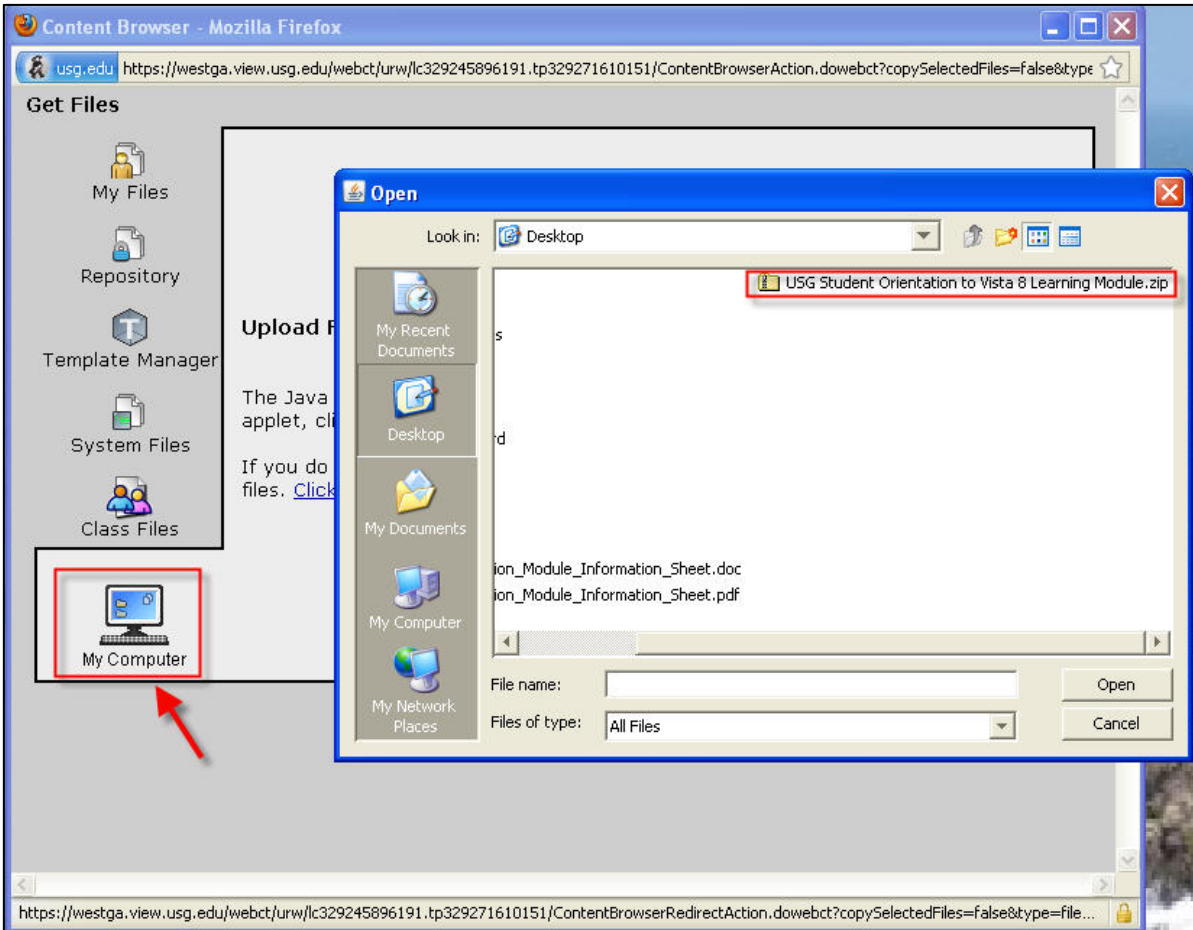
1. Obtain the Student_Orientation_Module.zip file and place it on a local drive or network. Do NOT unzip the folder.
2. Login into CourseDen, and from the Build tab, under Designer Tools, click **Manage Course**.



3. From the Manage Course screen, click **Import**.



- From the Content Browser pop-up window, select My Computer. Navigate to the folder where you placed the Student_Orientation_Module.zip file, and select the file.



The Content Import in Progress screen appears with a progress report and any errors and warnings.

Your location: **Manage Course**

Content Import in Progress

This task could take several minutes to more than an hour depending on the complexity and size of the content being imported.

Import activities:

You are currently importing **USG Student Orientation to Vista 8 Learning Module.zip**

Unpacking content package (could take several minutes).
50 entries unzipped ...
100 entries unzipped ...
150 entries unzipped ...
200 entries unzipped ...
Content package unpacked. Starting to import resources.
Imported 21 of 208 resources.
Imported 42 of 208 resources.
Imported 62 of 208 resources.
Imported 82 of 208 resources.
Imported 102 of 208 resources.
Imported 122 of 208 resources.
Imported 143 of 208 resources.
Imported 163 of 208 resources.
Imported 184 of 208 resources.
Imported 208 of 208 resources.
The import succeeded.
The content package was imported with 0 error(s) and 1 warning(s) .

- Click **Return**. The learning module is imported.

Student Access

The student orientation learning module is immediately available to students from Course Tools if the Learning Modules tool is not hidden. The module, however, is not automatically added to the Course Content Home.

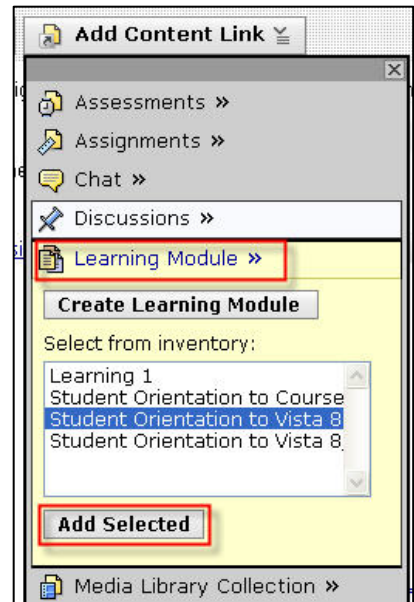
To add the module to Course Content Home:



1. From the Build tab, click **Add Content Link**.

2. Click **Learning Module**. The Learning Module section expands

3. From the inventory, select *Student Orientation* and click **Add Selected**. The learning module is added to the Home Page.



Customization

You may wish to customize the module so that it's more appropriate for your department, faculty, or institution. For example, you can change the name of the learning module, add content, or edit or delete the existing content.

The files that comprise the learning module are stored in File Manager, in a sub-folder of the Class Files folder called Imported Resources.

If you have questions or comments on the Student Orientation Learning Module, please call our helpline at 678-839-6248 or email distance@westga.edu