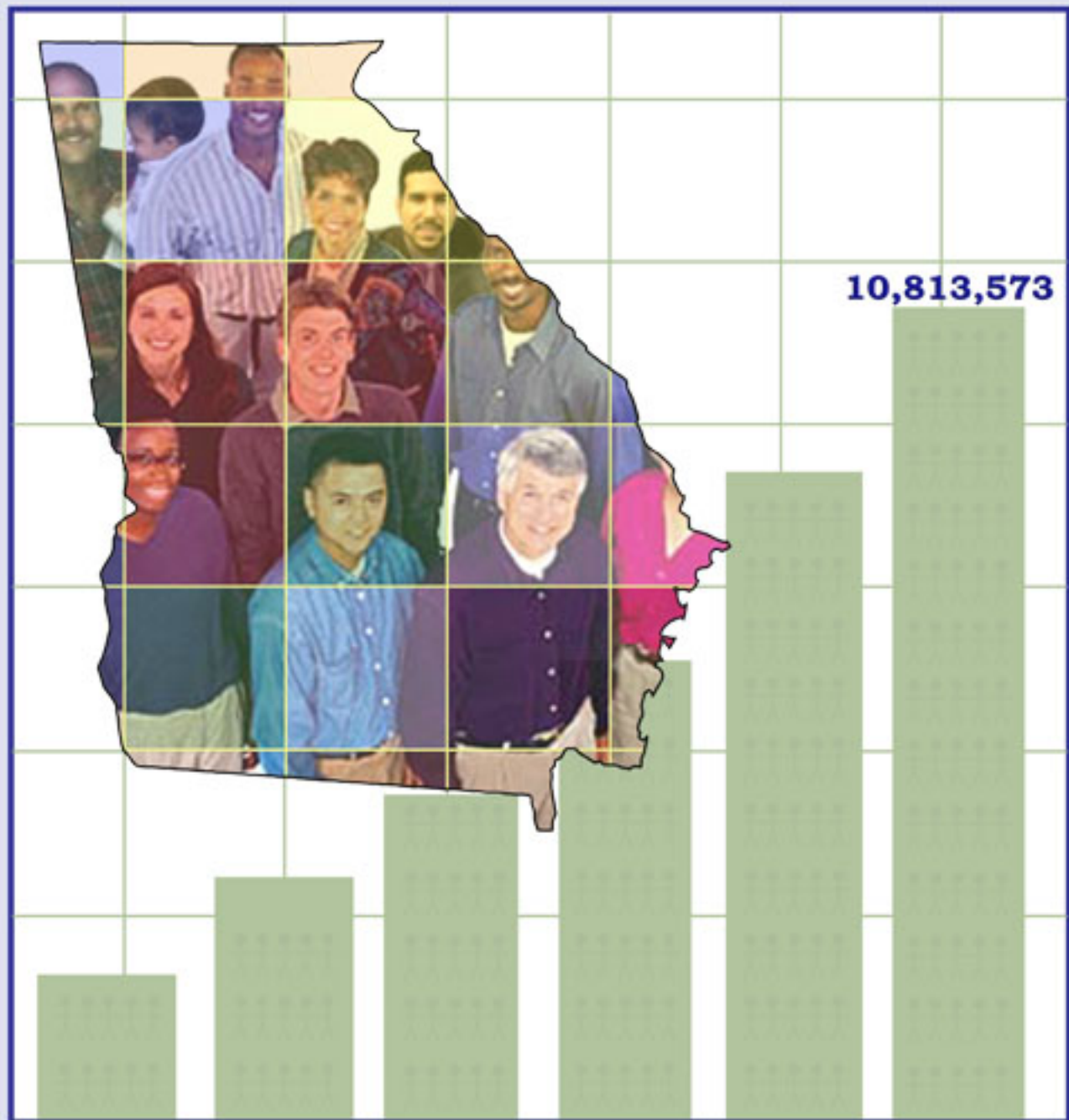


Georgia 2015

Population Projections



Georgia Population Projections Table of Contents 2010-2015

Georgia's 2015 Population Projections Highlights.....	1
Impact of Population Growth on Georgia by 2015.....	2
Georgia's Growth Continues.....	3
County Size and Growth.....	4
Metropolitan/Micropolitan Statistical Areas.....	5
Components of Growth.....	5
Natural Increase.....	5
Net Migration.....	6
Growth by Race and Ethnicity	7
Language Issues.....	9
Age Issues	
The Elderly Population	9
The Youth Population.....	9
Georgia Residential Population Projections.....	11
Appendix	
What is the Difference Between a Population Estimate and Projection?.....	14
How is Growth Computed?.....	14
What is the difference between Residential and Household Population?.....	14
What are Group Quarters and how do they affect the Population Projection?.....	14
Fertility.....	15
Life Expectancy.....	15
What are metropolitan and micropolitan statistical areas?	15
Migration	15
How do OPB projections compare to the US Census Bureau estimates and the Atlanta Regional Commission projections?	16

For a printer friendly version of this document click [HERE](#).

To view all associated tables for this document click [HERE](#).

All questions and inquiries can be addressed via email to:

Robert Giacomini
Research Director

Judy Hadley
Statistical Research Analyst

Georgia 2015 Population Projections

Highlights: Forecasts based on current trends

At current growth rates, Georgia's population will grow 34% between 2000 and 2015 to 10,813,573.

Georgia will likely become the eighth largest state in the nation in 2015, moving from its current ninth place, past the State of Michigan.

Twelve counties are expected to grow by 75% or more between 2000 and 2015.

By 2015, half of the state's population will reside in 12 counties: Gwinnett, Fulton, Cobb, DeKalb, Clayton, Henry, Cherokee, Chatham, Forsyth, Hall, Richmond and Muscogee.

By 2015, one out of eleven Georgians will reside in Gwinnett County. Gwinnett County's 2015 population of 1,030,700 will be larger than the total population of the 79 smallest Georgia counties *combined*.

Twenty-three counties are expected to lose population between 2000 and 2015.

In 2015, seven counties are expected to have a population less than 5,000: Taliaferro, Webster, Quitman, Glascock, Clay, Stewart, and Schley.

Georgia's African American population is currently the fourth largest in the nation behind New York, Texas and Florida. By 2015, only New York will have a significantly larger African American population than Georgia.

As a percentage of the total state population, Georgia will likely have the largest percentage of African American residents among the ten largest states by 2015.

At least four out of ten people moving to Georgia are international migrants. For thirteen of the last fourteen years, domestic and international migration has accounted for more than half of Georgia's annual population growth.

By 2015, approximately 10% of Georgia's population will be Hispanic, 28% African-American/Black, 59% Non-Hispanic White and 3% other minorities.

Georgia's Hispanic population is expected to increase 143% between 2000 and 2015. The African-American and Non-Hispanic White populations are each expected to increase about 25% during the same time period.

In 2000, 10% or more residents speak a language other than English at home in fifteen Georgia counties. In Echols, Gwinnett, Habersham, Hall, and Whitefield Counties, one in five residents speak a foreign language at home.

By 2015 13.6% of Georgia's population will be age 65 and older. Over 80% of this age group will be Non-Hispanic Whites.

By 2015, one in three Georgians will be under 20 years of age. About half of this age group will likely be Hispanic, African American or other minorities.

Just over half of Georgia's 2015 population will be considered of working age (20-64). This population of approximately 5 1/2 million will likely be comprised of 59% White, 9% Hispanic and 32% African American and other minorities.

The Governor's Office of Planning and Budget (OPB) periodically produces population projections for the state and each county.

Impact of Population Growth on Georgia by 2015

YOUTH

Georgia will gain more than 1.25 million children (under age 20) between 2000 and 2015.

The state currently spends approximately \$4,581 on each new student for education.

In current dollars, an increase in students in grades K-12 of approximately 1 million would cost the state an additional \$4.6 billion annually at current funding levels.

One million new students would require almost 44,000 new classrooms to be constructed with an average class size of 23.

The state currently spends \$5,236 for each new child in construction costs.

In current dollars, building classrooms for one million new students would cost \$5.3 billion.

The ELDERLY

Between 2000 and 2015, the highest growth rate in the 65 and older category will be among those citizens 85 and older. This population should number more than 290,000 in 2015, a 341% growth over 2000.

Over the next decade the baby boom generation will enter their retirement years. This will significantly change the demand for both private and government services.

The population 85 and older requires significantly more health services than the population 65 to 84. The cost of medical care increases greatly in the years just prior to death.

MOTOR VEHICLES

Georgia's increasing population will also place additional demands on the state infrastructure. The number of vehicles on the state highways could increase from 7.3 million in 2000 to at least 9 million in 2015.

If motor vehicles increase at rates similar to those in the 1990s, the number could be as much as 10 million vehicles in Georgia.

The number of vehicles traveling on each lane mile of freeway in Atlanta could increase from 18,700 per day to almost 25,000 per day, if vehicle travel increases as fast as the population.

CORRECTIONAL FACILITIES

At current incarceration rates, the state's prison population will increase from 43,270 in 2000 to 53,291 in 2015.

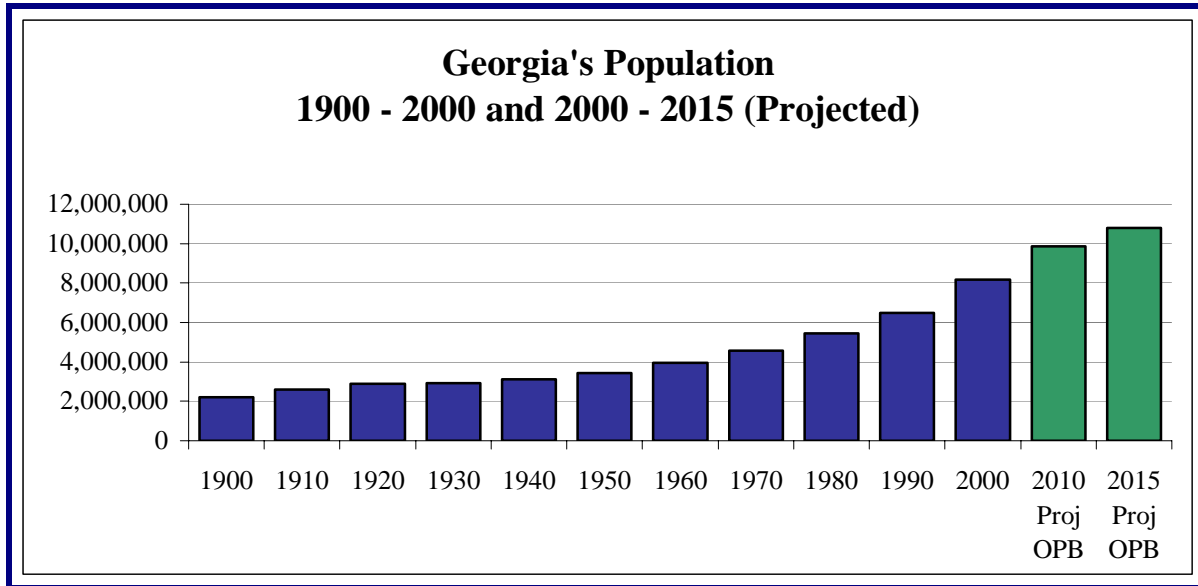
Current daily cost is approximately \$50 per prisoner or about \$18,250 a year. An additional 10,000 prisoners would cost the state \$182,500,000 annually.

REPRESENTATION

Depending on total population growth nationwide and Georgia's population share compared to other states, Georgia may pick up an additional congressional seat following the 2010 Census.

Georgia's Growth Continues

Georgia's resident population increased 26% between 1990 and 2000. This was the fastest growth of any decade this century. Georgia's population more than doubled between 1950 and 2000, increasing 256%.



In spite of the recession of the past few years, Georgia's growth has continued. The US Census Bureau estimates that Georgia grew by more than 642,930 people between 2000 and 2004, more than all but three states (California, Florida and Texas). Georgia's growth rate of 7.9 percent between 2000 and 2004 was the fifth fastest growing state in the nation.¹

The US Census Bureau estimated that Georgia had an average population increase of about 2% per year between 2000 and 2004 or about 160,700 people per year. This rate would give Georgia an estimated growth of 20% between 2000 and 2010.

Georgia and US Population Characteristics US Census Bureau Estimates 2003			
Population	Georgia	U.S.	State Rank
Population 2003 Census Estimates	8,676,460	290,788,976	9
% of Population Age 17 and Under	26.4%	25.0%	7
% of Population 65 and Older	9.6%	12.4%	48
Percentage of Population by Race			
% of Population African American/Black	28.7%	12.8%	5
% of Population Asian/Pacific Islander	2.5%	4.3%	21
% of Population All Other/Multiple Races	1.3%	2.4%	43
% of Population Hispanic/Latino	6.2%	13.7%	22
% of Population Non-Hispanic White	61.8%	67.9%	42
*Rank is based on 1 being the highest using US Census 2000-2004 Estimates			

County Size and Growth

Fastest Growing Counties

Twelve counties are expected to increase their residential population by 75% or more between 2000 and 2015: Forsyth:137%, Henry:135%, Newton:121%, Paulding:117%, Cherokee:91%, Lee:91%, Pickens:90%, Butts:88%, Dawson:87%, Barrow:84%, Walton:75% and Gwinnett:75%.

An additional 36 counties will grow more than 34% between 2000 and 2015.

According to the Census Bureau, Georgia had 5 of the top 10 fastest growing counties in the US for April 1 2000 to July 1 2003. There are more than 3,000 counties in the US. Georgia also had 20 of the top 100 fastest growing counties for this time period. In addition to the twelve counties listed above, the US Census Bureau's list of Georgia's 20 fastest growing counties included Bryan, Chattahoochee, Carroll, Coweta, Effingham, Hall, Jackson and White Counties.ⁱⁱ

Counties Losing Population

Twenty-three counties are expected to lose population between 2000 and 2015. Taliaferro, Stewart, Randolph, Calhoun, Warren, Quitman, Webster, and Liberty counties are expected to lose more than 10% of their residential population between 2000 and 2015. It is quite possible that troop movement from the military base influences the projected decrease in Liberty County's populationⁱⁱⁱ.

Show me the [MAP](#)

Largest County Populations

By 2015, half of the state's population will reside in 12 counties: Gwinnett, Fulton, Cobb, DeKalb, Clayton, Henry, Cherokee, Chatham, Forsyth, Hall, Richmond and Muscogee. 57% of Georgians will live in the 28 county metropolitan Atlanta area. Roughly 75% of the state's population will reside in 21% of the state's total land area.

Smallest County Populations

100 Georgia counties have populations less than 35,000 but cover 62% of the total land area. To place this in perspective, Turner Field in Atlanta could hold the entire population of any of the smallest 100 counties.

Population Density

In 2000, Georgia had a population density of 141 people per square land mile. Five Georgia counties have 1,000 people or more per square land mile: DeKalb, Fulton, Clayton, Cobb and Gwinnett. Of the ten largest states in population, only Texas will have a lower population density than Georgia. In the Southeast, Florida, North Carolina and Virginia will likely continue to have higher populations per square mile than Georgia.

By 2015, Georgia is expected to have 187 people per square land mile. Nine counties are expected to have 1,000 people or more per square land mile by 2015, adding Forsyth County to the above list of five. In spite of Gwinnett County's rapid growth, it will not have the highest population density. DeKalb, Clayton and Cobb Counties are all expected to have more people per square mile of land area.

Show me the [MAP](#)

**A complete table of population projections for Georgia Counties
may be found on page 11 of this report.**

Metropolitan / Micropolitan Statistical Areas

According to the February 2004 US Census Bureau listing, Georgia now has 15 Metropolitan Statistical Areas. Each metropolitan statistical area must have at least one urbanized area of 50,000 or more inhabitants. Georgia also has 28 micropolitan statistical areas, which have at least one urban cluster of at least 10,000 but less than 50,000 population. Additional "outlying counties" are included in the statistical area if they meet specified requirements of commuting to or from the central counties.^{iv}

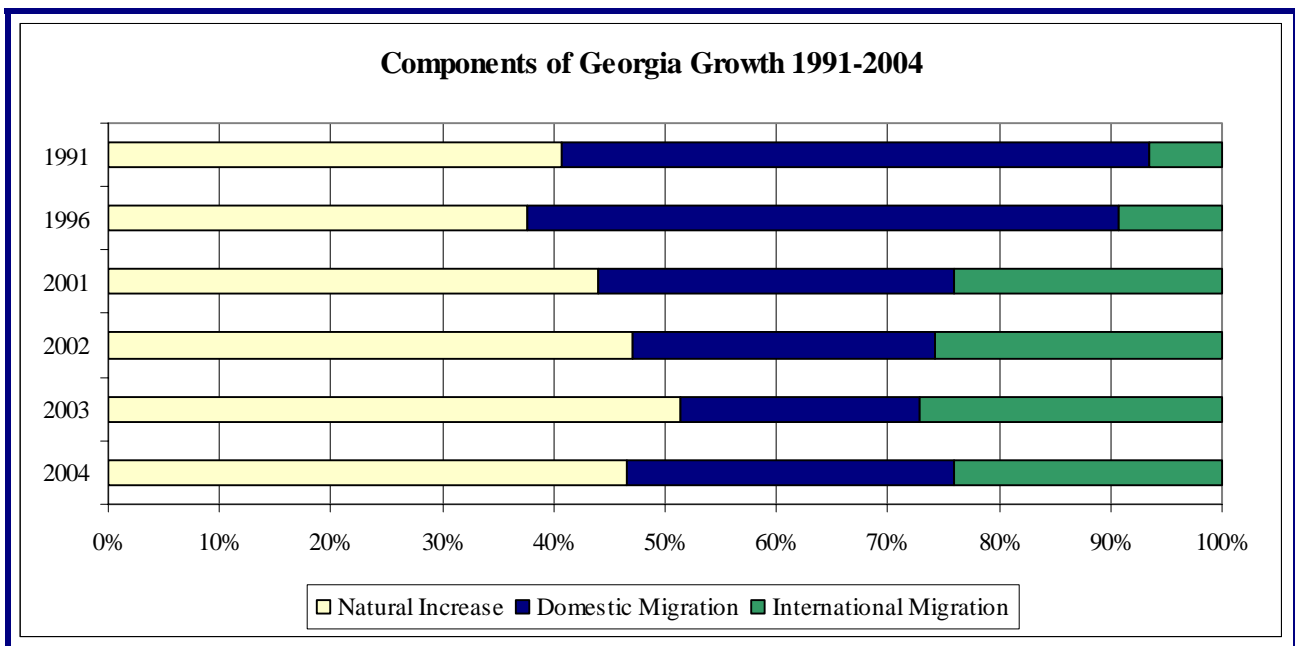
As areas grow toward each other, the area may become a "Combined Statistical Area". Georgia has 5 Combined Statistical Areas: Atlanta-Sandy Springs-Gainesville GA-AL, Chattanooga-Cleveland-Athens TN-GA, Columbus-Auburn-Opelika GA-AL, Macon-Warner Robins-Fort Valley, and Savannah-Hinesville-Fort Stewart.

Show me the Metropolitan [MAP](#)

Show me the Micropolitan [MAP](#)

Components of Growth

An area's population grows by natural increase and net migration. With the exception of 2003, less than half of Georgia's growth has been due to natural increase (more births than deaths). The relative decline in domestic migration may be due in part to the economic recession.



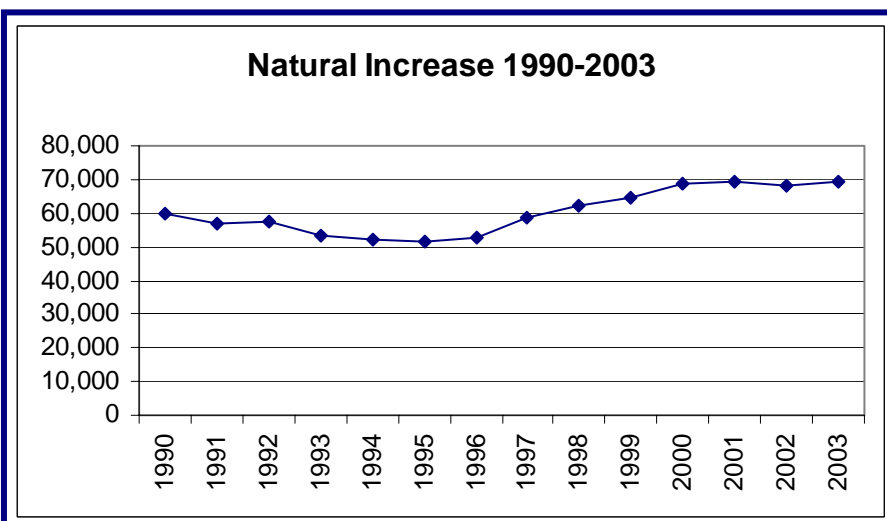
Natural increase

Georgia's natural increase has been rising since the mid-1990s. Natural increase is computed as births minus deaths.

There are usually slightly more than two births for each death. However, there are several Georgia counties that have more deaths than births.

According to Georgia Vital Records, Brooks, Fannin, Glascock, Lincoln, Randolph, Stewart, Talbot, Taliaferro, Towns, Union, Upson and Webster Counties all had more deaths than births between 2000 and 2003.

Show me the [MAP](#)



Net migration

Net migration is the number of people moving into the area minus the number of people moving out of an area.

In the last four years only three states, Arizona, Florida, and Nevada, have gained more people from other states than Georgia.

Georgia is now considered one of America's international gateways.

At least four out of ten people moving to Georgia are international migrants. An estimated yearly average of 37,500 people moved to Georgia from another country between 2001 and 2004.

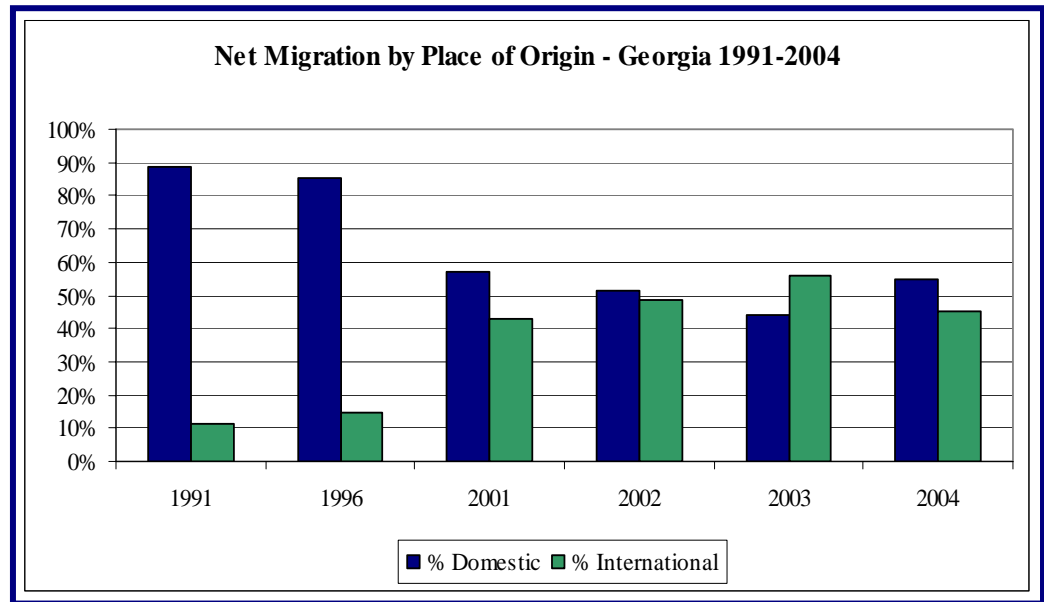
This ranks Georgia as the seventh most popular state for international migrants. In the Southeast only Florida has higher migration levels.

This number does not capture the number of foreigners who enter the United States at a different gateway and then move to Georgia at a later time. For example, the person may enter the country in New York, California, or Texas and then move to Georgia.

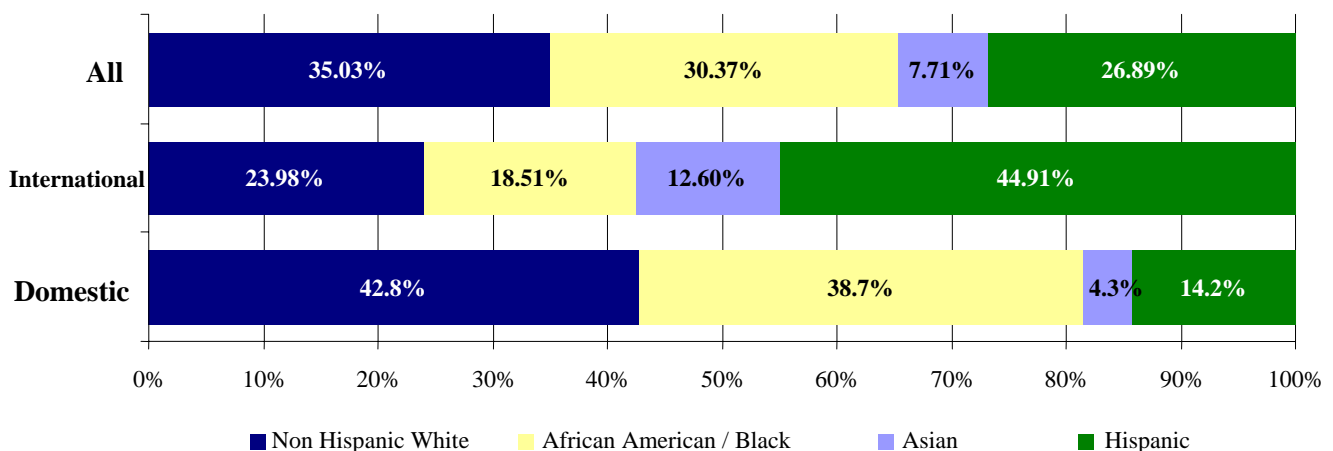
The graph above also indicates how domestic migration slowed during the recession. While not back to the 2001 numbers, the 2004 estimated domestic migration is considerably higher than it was in 2003.

Census estimates do not allow for detailed analysis on the region of origin of migrants. However, Census 2000 provides more detailed information. The following table shows the race and Hispanic origin of both domestic and international migrants to Georgia between 1995 and 2000.

Hispanics, Blacks and Asians were a majority of both domestic and international migrants during this period and constituted two out of every three persons moving into the state.



Migration to Georgia: 1995-2000



Growth by Race and Ethnicity

In the following discussion White, African Americans, and other minority projections do not include Hispanics. Hispanics may be of any race. Over 90% of Non-Whites are African Americans or Black. The remainders are Asians, Alaskan Natives, American Indians and Pacific Islanders. At the 2000 Census, the majority of Georgia's resident population was Non-Hispanic White. This is expected to remain true for 2015. In the 2015 OPB population projections, 134 counties are expected to have 50% or more White residents. Twenty counties are expected to have 50% or more African American or other non-white residents, and 4 counties are expected to have 20% or more Hispanic residents.

By 2015, the OPB projections indicate that about 40% of the resident population will be minority that is either non-white or Hispanic.

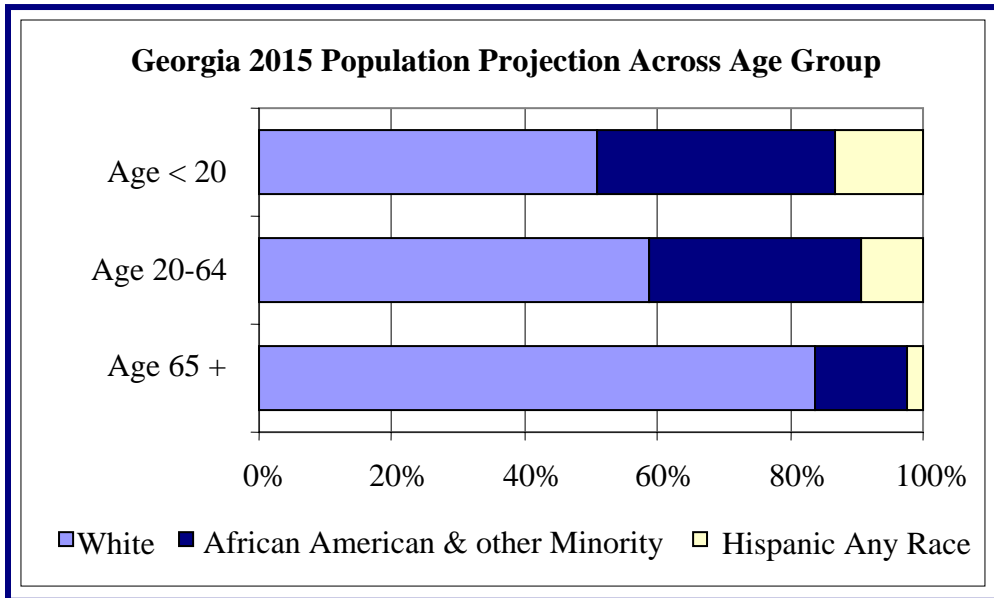
The US Census Bureau's 2003 estimates have Georgia's Hispanic population growing by 24 percent between 2000 and 2003, from 435,277 to 541,123. Georgia ranks 10th among the 50 States in the percentage of minority residents (38%).

2000-2015 Georgia Residential Population by Race/Ethnicity						
	2000 Census	Race / Ethnicity % 2000	2010 Projection	Race / Ethnicity % 2010	2015 Projection	Race / Ethnicity % 2015
White	5,128,663	62.6%	5,944,068	60.3%	6,424,856	59.4%
African American & Other Minorities	2,623,728	32.0%	3,029,371	30.7%	3,329,862	30.8%
Hispanic Any Race	434,062	5.3%	891,531	9.0%	1,058,855	9.8%
Totals	8,186,453	100.0%	9,864,970	100.0%	10,813,573	100.0%

The percentage of Hispanics in Georgia's 2015 resident population is expected to grow from 5.3% to 9.8%. The number of Whites, African Americans, and other minorities will also grow but their percentage of the total population will drop about 2% each.

The number of Whites, African Americans, and other minorities will increase about 25% each between 2000 and 2015. However, the number of Hispanics is expected to increase about 143% between 2000 and 2015.

2000-2015 Georgia Residential Population Numeric Growth of Race/Ethnic Groups				
	Numeric Growth 2000 - 2010	% Growth 2000 - 2010	Numeric Growth 2000 - 2015	% Growth 2000 - 2015
White	815,405	15.9%	1,296,193	25.3%
African American & Other Minorities	405,643	15.5%	706,134	26.9%
Hispanic Any Race	457,469	105.4%	624,793	143.9%
Total	1,678,517	20.5%	2,627,120	32.1%

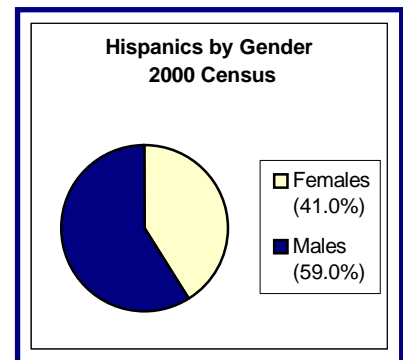
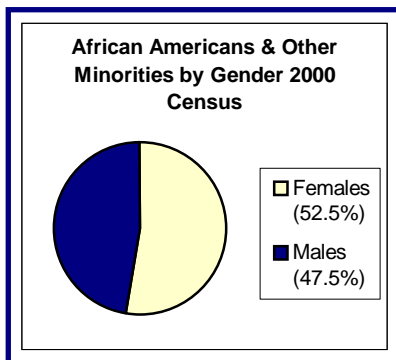
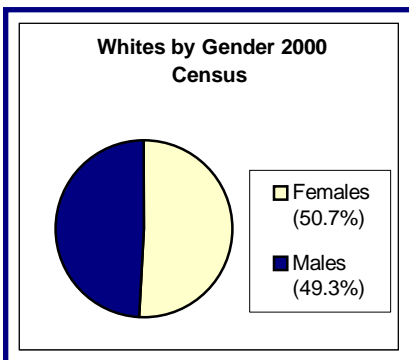


The age spread is not uniform across the racial/ethnic groups. The White population has a lower percentage of youth (under 20 years of age) and a higher percentage of elderly (age 65 and older) than the other two groups.

Age Group Shift By Race/Ethnicity 2000 - 2015						
Age Group	2000	2015	2000	2015	2000	2015
Race / Ethnicity	White	White	African American & Other Minority	African American & Other Minority	Hispanic	Hispanic
Age < 20	26.1%	29.1%	35.1%	39.6%	36.3%	46.1%
Age 20-64	62.0%	51.9%	58.6%	54.2%	61.7%	50.6%
Age 65+	11.9%	19.1%	6.3%	6.2%	1.9%	3.3%
Total	100.0%	100.0%	100.0%	100.0%	100.0%	100.0%

Across all race and ethnic groups, the percentage of the working age population will decline as the percentage of youth and elderly increase.

At the 2000 Census, the genders were almost equal in the White population. Females outnumbered males in African American and other minority populations. Hispanic males far outnumbered the Hispanic females. In 2000, 59% of Hispanics were male. However the proportion as well as the number of Hispanic females is expected to increase. By 2015, about 43% of Hispanics are expected to be female.



Language Issues

English as a Second Language is becoming more prevalent as Georgia becomes more and more diverse. 10% or more residents in 15 Georgia counties speak a language other than English at home. In Echols, Gwinnett, Habersham, Hall, and Whitefield Counties, one in five residents speak a foreign language at home. This does not necessarily mean that they are not proficient in English.

These counties are Atkinson (16%), Chattahoochee (14%), Clarke (12%), Colquitt (11%), Clayton (15%), Cobb (15%), DeKalb (17%), Echols (22%), Fulton (13%), Gwinnett (21%), Habersham (21%), Hall (21%), Liberty (13%), Toombs (10%) and Whitfield (22%).

The majority of these residents speak Spanish but many other languages are also represented. Some school systems have as many as 30 languages being spoken at one school.

Show me the [MAP](#)

Age

The Elderly Population

Georgia has a lower percentage of the population aged 65 and over than all but two states. The 2004 US Census Bureau estimates that 12.4% of the population is age 65 and over. The 2004 US Census Bureau estimates have 9.6% of Georgia residents at age 65 and over.

The 2015 OPB population projection expects that 13.6% of the state residents will be age 65 and older. Thirty-five counties are expected to have at least 20% of their county population age 65 or older. Six counties are expected to have at least 25% of their county population age 65 or older.

There are 3 major concentrations of elderly population. The north Georgia mountains, the lower southwest counties along the state line and central Georgia counties which include Taliaferro, Wilkes, Lincoln, Greene, and Putnam Counties.

Show me the [MAP](#)

The Youth Population

Georgia has a slightly higher percentage of young persons age 19 and under than the national average. In 2004, an estimated 25% of the nation was under age 20 while 26% of Georgia residents were estimated to be under age 20 and under.

The 2015 OPB population projection expects 34% of Georgia residents to be under age 20. Twenty-seven counties are expected to have 35% or more young people. Seven counties are expected to have 37% or more young people. Note that college students and young military personnel influence the resident populations in some counties. Additionally, many immigrants are young and just starting their families. Counties with large immigrant populations are quite likely to see an increase in the number of county births.

Show me the [MAP](#)

Georgia 2010-2015 Residential Population Projection Alphabetic County List

Georgia Residential Population Projections	2000 Residential Census	2010 Residential Projection	2015 Household Projection	Group Quarters Projection	2015 Residential Projection	2000-2015 Projected Residential Growth %
Georgia	8,186,453	9,864,970	10,554,171	259,402	10,813,573	32.1%
Appling	17,419	18,724	19,112	282	19,394	11.3%
Atkinson	7,609	8,755	9,317	41	9,358	23.0%
Bacon	10,103	10,263	10,159	162	10,321	2.2%
Baker	4,074	4,848	5,301	14	5,315	30.5%
Baldwin	44,700	46,063	38,326	8,188	46,514	4.1%
Banks	14,422	18,006	20,047	30	20,077	39.2%
Barrow	46,144	70,553	84,176	487	84,663	83.5%
Bartow	76,019	105,241	121,005	950	121,955	60.4%
Ben Hill	17,484	16,655	16,003	367	16,370	-6.4%
Berrien	16,235	17,133	17,460	145	17,605	8.4%
Bibb	153,887	154,889	149,678	5,562	155,240	0.9%
Bleckley	11,666	12,483	12,130	750	12,880	10.4%
Brantley	14,629	16,921	18,193	81	18,274	24.9%
Brooks	16,450	15,819	15,023	482	15,505	-5.7%
Bryan	23,417	33,135	38,603	143	38,746	65.5%
Bulloch	55,983	64,275	64,335	3,900	68,235	21.9%
Burke	22,243	24,561	25,471	294	25,765	15.8%
Butts	19,522	31,817	30,930	5,830	36,760	88.3%
Calhoun	6,320	5,715	4,059	1,319	5,378	-14.9%
Camden	43,664	49,896	50,597	2,227	52,824	21.0%
Candler	9,577	11,226	11,744	423	12,167	27.0%
Carroll	87,268	125,109	140,966	3,200	144,166	65.2%
Catoosa	53,282	69,356	78,280	450	78,730	47.8%
Charlton	10,282	12,142	11,336	1,600	12,936	25.8%
Chatham	232,048	244,446	239,959	9,621	249,580	7.6%
Chattahoochee	14,882	23,556	15,481	10,000	25,481	71.2%
Chattooga	25,470	28,722	28,952	1,670	30,622	20.2%
Cherokee	141,903	224,238	270,115	1,400	271,515	91.3%
Clarke	101,489	110,647	108,463	7,407	115,870	14.2%
Clay	3,357	3,394	3,366	52	3,418	1.8%
Clayton	236,517	314,086	354,370	3,152	357,522	51.2%
Clinch	6,878	7,327	7,096	425	7,521	9.3%
Cobb	607,751	735,922	801,883	9,246	811,129	33.5%
Coffee	37,413	42,743	43,416	1,942	45,358	21.2%
Colquitt	42,053	45,442	45,684	1,445	47,129	12.1%
Columbia	89,288	116,642	131,578	725	132,303	48.2%
Cook	15,771	16,827	17,120	262	17,382	10.2%
Coweta	89,215	129,899	152,694	755	153,449	72.0%
Crawford	12,495	12,829	12,890	119	13,009	4.1%
Crisp	21,996	21,983	21,552	467	22,019	0.1%
Dade	15,154	17,582	18,053	878	18,931	24.9%
Dawson	15,999	24,757	29,736	122	29,858	86.6%
Decatur	28,240	28,281	27,699	643	28,342	0.4%

Georgia Residential Population Projections	2000 Residential Census	2010 Residential Projection	2015 Household Projection	Group Quarters Projection	2015 Residential Projection	2000-2015 Projected Residential Growth %
DeKalb	665,865	711,604	711,451	14,607	726,058	9.0%
Dodge	19,171	20,204	18,861	1,841	20,702	8.0%
Dooly	11,525	11,606	10,312	1,310	11,622	0.8%
Dougherty	96,065	94,404	88,968	4,639	93,607	-2.6%
Douglas	92,174	125,065	142,885	1,000	143,885	56.1%
Early	12,354	11,978	11,603	250	11,853	-4.1%
Echols	3,754	4,585	5,061	0	5,061	34.8%
Effingham	37,535	54,807	64,619	255	64,874	72.8%
Elbert	20,511	20,966	20,982	252	21,234	3.5%
Emanuel	21,837	21,983	21,248	814	22,062	1.0%
Evans	10,495	13,315	14,282	623	14,905	42.0%
Fannin	19,798	24,626	27,361	151	27,512	39.0%
Fayette	91,263	116,659	130,880	612	131,492	44.1%
Floyd	90,565	100,288	101,270	4,200	105,470	16.5%
Forsyth	98,407	183,430	232,229	719	232,948	136.7%
Franklin	20,285	23,280	24,493	564	25,057	23.5%
Fulton	816,006	826,843	802,464	30,287	832,751	2.1%
Gilmer	23,456	31,752	36,367	202	36,569	55.9%
Glascocok	2,556	2,822	2,889	104	2,993	17.1%
Glynn	67,568	76,339	79,495	1,627	81,122	20.1%
Gordon	44,104	56,512	63,092	427	63,519	44.0%
Grady	23,659	25,435	26,086	284	26,370	11.5%
Greene	14,406	17,248	18,711	208	18,919	31.3%
Gwinnett	588,448	870,611	1,024,006	6,694	1,030,700	75.2%
Habersham	35,902	44,362	47,230	1,955	49,185	37.0%
Hall	139,277	194,861	223,732	2,501	226,233	62.4%
Hancock	10,076	11,221	8,257	2,900	11,157	10.7%
Haralson	25,690	31,596	34,605	400	35,005	36.3%
Harris	23,695	30,975	34,981	249	35,230	48.7%
Hart	22,997	24,458	24,801	534	25,335	10.2%
Heard	11,012	11,484	11,674	109	11,783	7.0%
Henry	119,341	221,174	279,753	933	280,686	135.2%
Houston	110,765	142,626	158,029	2,669	160,698	45.1%
Irwin	9,931	10,413	10,317	369	10,686	7.6%
Jackson	41,589	59,781	69,494	850	70,344	69.1%
Jasper	11,426	15,212	17,362	69	17,431	52.6%
Jeff Davis	12,684	13,574	13,943	92	14,035	10.7%
Jefferson	17,266	16,330	15,563	474	16,037	-7.1%
Jenkins	8,575	9,175	9,365	136	9,501	10.8%
Johnson	8,560	9,587	8,278	1,430	9,708	13.4%
Jones	23,639	29,634	32,706	398	33,104	40.0%
Lamar	15,912	17,723	17,974	815	18,789	18.1%
Lanier	7,241	7,665	7,629	268	7,897	9.1%
Laurens	44,874	49,790	51,373	1,200	52,573	17.2%
Lee	24,757	36,790	46,392	841	47,233	90.8%
Liberty	61,610	55,431	49,097	5,100	54,197	-12.0%
Lincoln	8,348	8,944	9,247	74	9,321	11.7%

Georgia Residential Population Projections	2000 Residential Census	2010 Residential Projection	2015 Household Projection	Group Quarters Projection	2015 Residential Projection	2000-2015 Projected Residential Growth %
Long	10,304	11,881	12,729	0	12,729	23.5%
Lowndes	92,115	100,565	97,780	6,987	104,767	13.7%
Lumpkin	21,016	28,222	30,356	1,447	31,803	51.3%
Macon	14,074	14,455	12,884	1,500	14,384	2.2%
Madison	25,730	30,358	32,830	162	32,992	28.2%
Marion	7,144	7,258	7,235	86	7,321	2.5%
McDuffie	21,231	21,939	21,932	341	22,273	4.9%
McIntosh	10,847	11,427	11,719	65	11,784	8.6%
Meriwether	22,534	23,223	23,083	490	23,573	4.6%
Miller	6,383	6,200	5,948	140	6,088	-4.6%
Mitchell	23,932	23,774	21,828	1,918	23,746	-0.8%
Monroe	21,757	26,788	28,908	750	29,658	36.3%
Montgomery	8,270	10,159	9,786	1,200	10,986	32.8%
Morgan	15,457	19,798	22,124	194	22,318	44.4%
Murray	36,506	46,293	51,608	214	51,822	42.0%
Muscogee	186,291	183,614	172,878	9,489	182,367	-2.1%
Newton	62,001	109,345	135,750	1,200	136,950	120.9%
Oconee	26,225	32,402	36,852	246	37,098	41.5%
Oglethorpe	12,635	15,051	16,299	138	16,437	30.1%
Paulding	81,678	142,388	176,783	722	177,505	117.3%
Peach	23,668	25,960	26,193	1,023	27,216	15.0%
Pickens	22,983	36,039	43,524	227	43,751	90.4%
Pierce	15,636	17,961	19,161	130	19,291	23.4%
Pike	13,688	18,072	20,378	276	20,654	50.9%
Polk	38,127	43,643	45,832	862	46,694	22.5%
Pulaski	9,588	10,162	9,304	1,165	10,469	9.2%
Putnam	18,812	21,505	22,770	268	23,038	22.5%
Quitman	2,598	2,242	2,234	0	2,234	-14.0%
Rabun	15,050	17,598	19,066	275	19,341	28.5%
Randolph	7,791	6,628	6,103	368	6,471	-16.9%
Richmond	199,775	193,914	180,454	11,109	191,563	-4.1%
Rockdale	70,111	86,162	95,599	1,109	96,708	37.9%
Schley	3,766	4,490	4,900	9	4,909	30.4%
Screven	15,374	15,576	15,212	492	15,704	2.1%
Seminole	9,369	9,527	9,418	314	9,732	3.9%
Spalding	58,417	65,238	68,923	1,040	69,963	19.8%
Stephens	25,435	25,739	25,085	863	25,948	2.0%
Stewart	5,252	4,450	3,931	273	4,204	-20.0%
Sumter	33,200	32,954	31,247	1,648	32,895	-0.9%
Talbot	6,498	6,693	6,798	18	6,816	4.9%
Taliaferro	2,077	1,708	1,621	23	1,644	-20.8%
Tattnall	22,305	23,094	19,749	3,800	23,549	5.6%
Taylor	8,815	9,120	8,809	464	9,273	5.2%
Telfair	11,794	11,076	9,389	1,461	10,850	-8.0%
Terrell	10,970	10,566	10,155	214	10,369	-5.5%
Thomas	42,737	46,235	46,825	1,286	48,111	12.6%
Tift	38,407	42,261	42,907	1,445	44,352	15.5%

Georgia Residential Population Projections	2000 Residential Census	2010 Residential Projection	2015 Household Projection	Group Quarters Projection	2015 Residential Projection	2000-2015 Projected Residential Growth %
Toombs	26,067	27,489	27,777	442	28,219	8.3%
Towns	9,319	11,469	12,268	650	12,918	38.6%
Treutlen	6,854	7,691	7,023	875	7,898	15.2%
Troup	58,779	63,974	65,039	1,677	66,716	13.5%
Turner	9,504	9,708	9,666	173	9,839	3.5%
Twiggs	10,590	10,224	10,166	121	10,287	-2.9%
Union	17,289	23,349	26,562	462	27,024	56.3%
Upton	27,597	28,849	29,182	454	29,636	7.4%
Walker	61,053	66,425	68,201	1,223	69,424	13.7%
Walton	60,687	89,688	105,751	700	106,451	75.4%
Ware	35,483	36,408	33,504	3,000	36,504	2.9%
Warren	6,336	5,651	5,298	114	5,412	-14.6%
Washington	21,176	20,172	18,616	1,473	20,089	-5.1%
Wayne	26,565	29,960	29,324	2,400	31,724	19.4%
Webster	2,390	2,071	2,090	2	2,092	-12.5%
Wheeler	6,179	8,096	7,438	1,526	8,964	45.1%
White	19,944	29,343	34,356	531	34,887	74.9%
Whitfield	83,525	96,930	103,578	781	104,359	24.9%
Wilcox	8,577	9,061	7,659	1,604	9,263	8.0%
Wilkes	10,687	10,678	10,538	145	10,683	0.0%
Wilkinson	10,220	10,345	10,291	92	10,383	1.6%
Worth	21,967	21,560	21,170	212	21,382	-2.7%

Source: Georgia Governor's Office of Planning and Budget 2015 Population Projections as of 12/04

Appendix

What is the Difference Between a Population Estimate and a Population Projection?

Estimates usually are for the present and the past, while projections are estimates of the population for future dates. This document includes some US Census Bureau population estimate data as well as the OPB 2010-2015 population projections.

How is Growth Computed?

The 2010-2015 OPB population projections by age, race, and sex for Georgia counties were developed using the cohort-survival model (also known as the cohort-component model). The method uses the following demographic equation:

$$\begin{aligned} \text{Population}_1 &= \text{Population}_0 + \text{Births} - \text{Deaths} + \text{Net Migration} \\ \text{2015 population} &= \text{2000 population} + \text{expected births} - \text{expected deaths} + \text{expected migration} \end{aligned}$$

The existing OPB population projections were updated with the most recent census data as well as the actual birth and death data for 1990 through 2003. Additionally, a comparison was made to the US Census 2003 population estimates, which include the most recent migration data.^v

Projections were produced for males and females using 3 racial/ethnic groupings, non-Hispanic Whites, non-Hispanic Non-Whites and Hispanics of any race. The 2010-2015 population projection is the first time that OPB has produced Hispanic population projections.

What is the difference between residential and household populations?

Household population

The household population is the population residing in homes, apartments and other normal family dwellings. The household population is computed first, and then the group quarters population is added to create the resident population.

Resident population

The residential population is the household population plus the group quarters population.

What are Group Quarters and how do they affect the population projections?

The group quarters population is the population residing in college dorms, nursing homes, prisons, military barracks and other non-household settings. The group quarters population for a county does not usually vary much unless a new facility is built, the existing facility capacity is changed or a facility closes.

The group quarters population is expected to grow by at least 25,580 between 2000 and 2015. The change includes some expected construction and some counting changes. No doubt, other construction will be announced later in the decade and increase this estimate.^{vi}

OPB surveys the group quarters facilities annually and reports the facility population to the US Census Bureau. This annual report enables the US Census Bureau to track the facility changes between the decennial census reports.

Show me the **MAP**

Fertility

For fertility calculations, women aged 15–44 years are considered of childbearing age. Fertility rates vary considerably by race and ethnicity.

Fertility rate = number of births of a specific race/ethnicity / number of women age 14-44 of that specific race/ethnicity.

The fertility rates used in these projections are a combination of the national fertility rates published by the National Center for Health Statistics (NCHS) and a computed county fertility rate.

For more details, see the August 2003 NCHS report: *New Report Revises Birth and Fertility Rates for the 1990s Uses 2000 Census Population Estimates to Improve Accuracy*
<http://www.cdc.gov/nchs/pressroom/03facts/revisesrates.htm>.

Life expectancy

The life expectancy/survival rates used in this projection are taken from those published by the National Center for Health Statistics (NCHS). For more details, see the NCHS Mortality Tables website:
<http://www.cdc.gov/nchs/datawh/statab/unpubd/mortabs.htm>.

What are metropolitan and micropolitan statistical areas?

Metropolitan and micropolitan statistical areas are metropolitan areas (MAs) that are not closely associated with other MAs. These areas typically are surrounded by nonmetropolitan counties.

Each metropolitan statistical area must have at least one urbanized area of 50,000 or more inhabitants. Each micropolitan statistical area must have at least one urban cluster of at least 10,000 but less than 50,000 population. Additional "outlying counties" are included in the statistical area if they meet specified requirements of commuting to or from the central counties.^{vii}

Migration

The population is classified as movers or non-movers depending on where they move. If a family moves to a different home within the same county, they are non-movers for migration calculations (intra-county). If they move across county lines, they are movers at the county level but non-movers at the state level (inter-county). If they move to another state, they are movers at both state and county levels (inter-state and inter-county).

Internal or domestic migration calculates people who move within the United States. International migration calculates people who move into or away from the United States.

One of the main reasons people move to an area is for work. The job market has suffered during the 2001-2003 recession years. It is probable that as the job market picks up, there will be increased migration into Georgia.

The US Census Bureau supplies in-migration and out-migration data. They collect data from a variety of sources including the Internal Revenue Service and the Immigration and Naturalization Service. The estimated yearly migration rate in this projection is an average of the net county migration from 2000 to 2003. There are no age/race/sex details in the Census migration data; therefore it is distributed in each county according to that county's characteristics.

How do the OPB projections compare to the US Census estimates and the Atlanta Regional Commission projections?

The OPB population projections are in line with the US Census Bureau estimates for 8 of the 10 Atlanta Regional Commission (ARC) counties. The OPB projections are higher than the US Census Bureau estimates for Fulton and DeKalb counties.

The ARC projections are generally lower than either the OPB projections or the US Census Bureau estimates. ARC has a much higher projections for Fulton County than either the OPB projections or the US Census Bureau estimates. The ARC DeKalb County projection is in line with the OPB DeKalb County Projection.

The OPB projections, the US Census estimates and the Atlanta Regional Commission projections all use different methodology. They will never have an exact match. There are many different calculations done by each group. For example, the OPB population projection primarily uses the cohort component method. The US Census estimates include residuals in addition to the cohort component method to make the total estimate add up to a pre-set national total. The Atlanta Regional Commission projection uses an econometric module to produce employment data in addition to the cohort component method.

ⁱ <http://www.census.gov/Press-Release/www/releases/archives/population/003153.html>

ⁱⁱ CB04-57 US Census Bureau, April 4, 2004. Data for 2004 county growth is not available at this time. <http://www.census.gov/Press-Release/www/releases/archives/population/001758.html>

ⁱⁱⁱ The US Census Bureau shows a high yearly out-migration for Liberty County population. It appears that the military personnel are being counted when they move out but not when they move in. The Census Bureau plans to change the way migration is calculated before the 2010 census. It is expected that this change will influence future net migration estimates.

^{iv} OMB BULLETIN NO. 04-03 Feb. 2004, http://www.whitehouse.gov/omb/bulletins/b03-04_attach.pdf.

^v The 2001-2003 data used for the 2010 projection reflects the recent slow economy. If there were a strong economic recovery in the next few years, the population projections would change.

^{vi} GQ note: Fort Benning has barracks in both Muscogee and Chattahoochee Counties. They report a higher occupancy to OPB than the US Census Bureau uses. OPB is using the larger figure. In general, the group quarters population is constant unless and new facility is opened or closed. It is impossible to determine future development at this time. Therefore, the 2010 group quarters number is being carried forward to 2015.

^{vii} US Census Bureau website Metropolitan Statistical Area, http://www.census.gov/geo/www/cob/ma_metadata.html#msa.