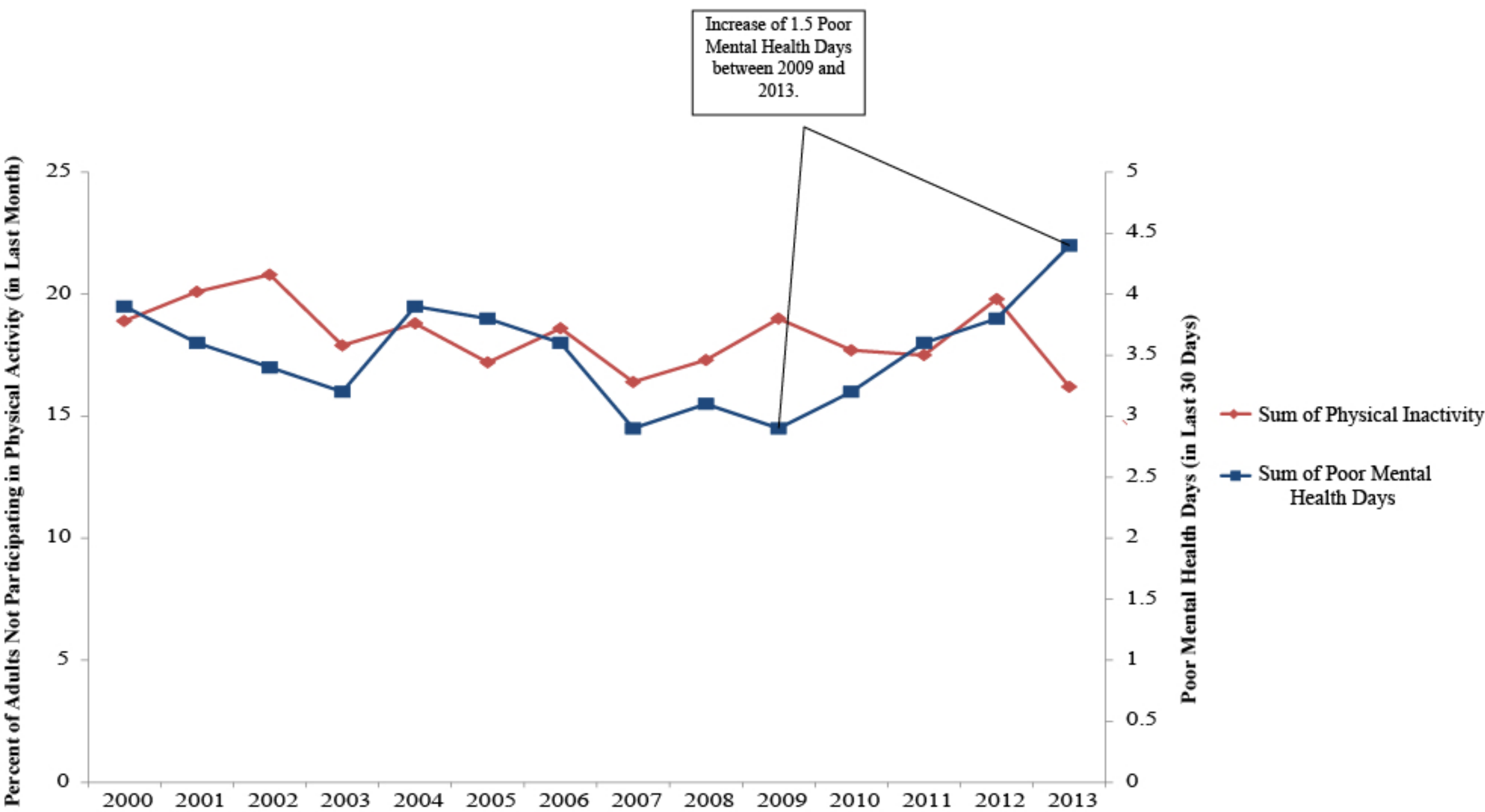


Health Information in Oregon

This graph displays health information in Oregon between the years of 2000-2013. The percentage of adults who did not participate in physical activity outside of work in the last month on the left axis in red. The blue line represents the number of poor health days (in the last 30 days) in which a persons activities have been affected because of physical health difficulties. The mini pie charts represent the percentage of adults who drank excessively in the last 30 days for the years of 2000, 2006, and 2013.



Increase of 1.5 Poor Mental Health Days between 2009 and 2013.

Percent of Adults Not Participating in Physical Activity (in Last Month)

Poor Mental Health Days (in Last 30 Days)

Sum of Physical Inactivity
Sum of Poor Mental Health Days

Years



14.5% of Oregon Population Participated in Binge Drinking in 2000.



Binge Drinking
Not Binge Drinking