

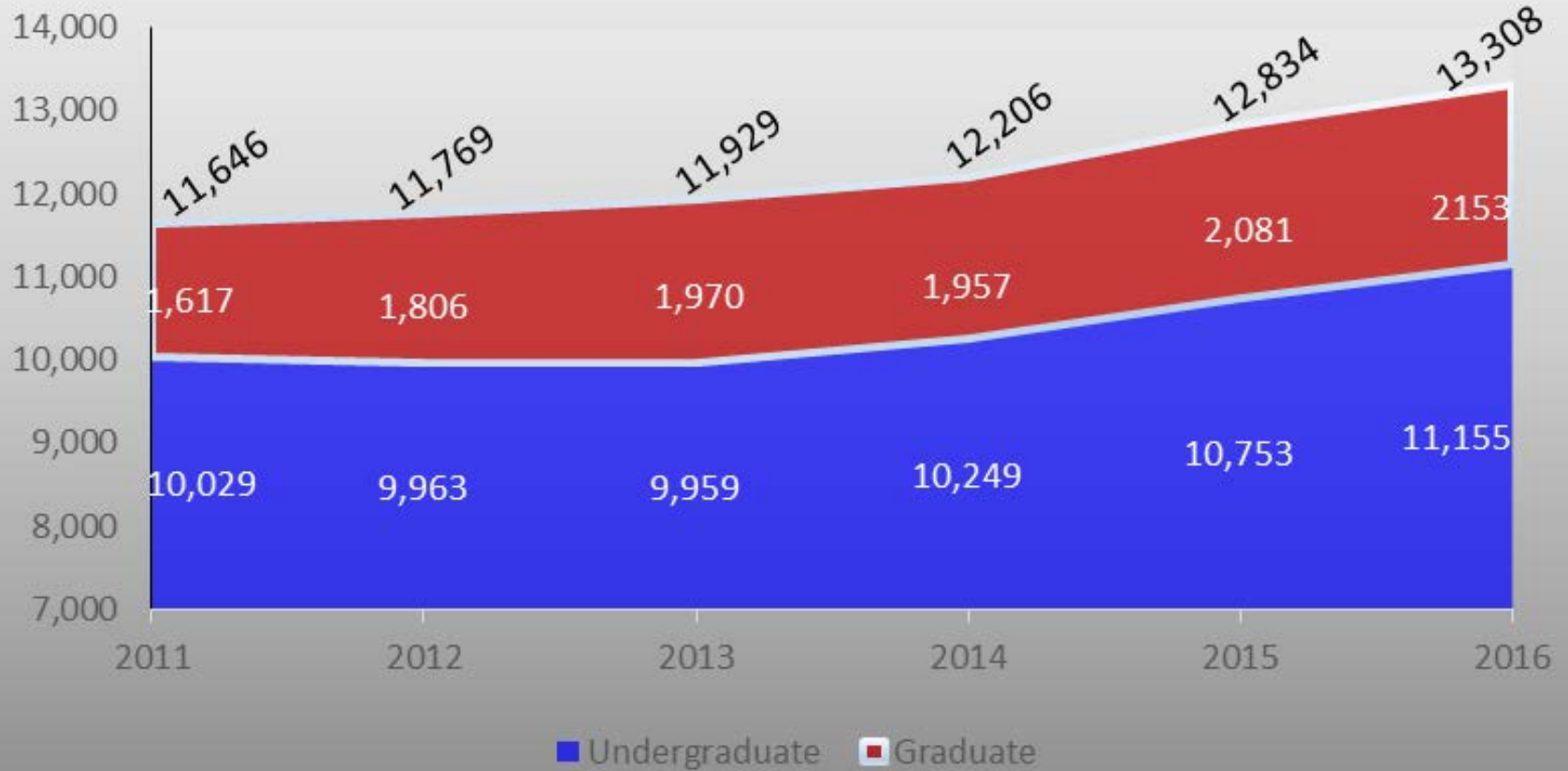
# CCEC: January 25, 2017

## UWG update – Freshman KPIs

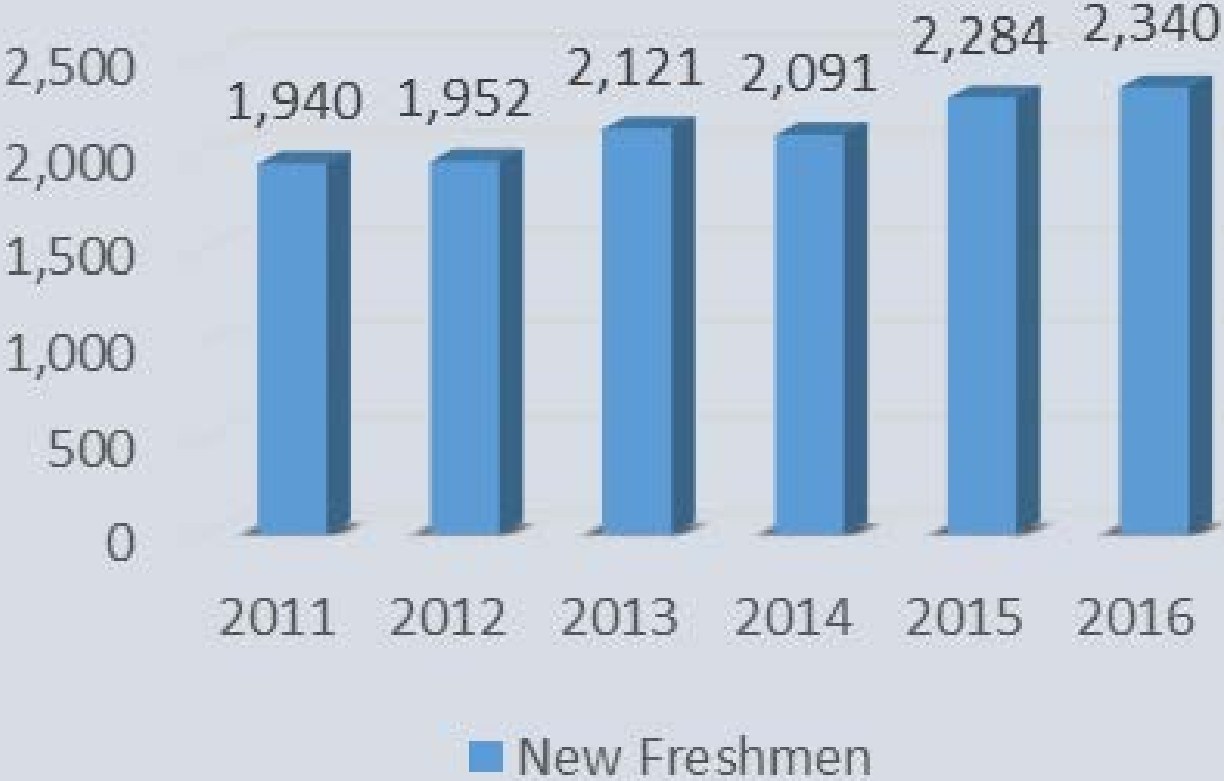
Dr. Kyle Marrero



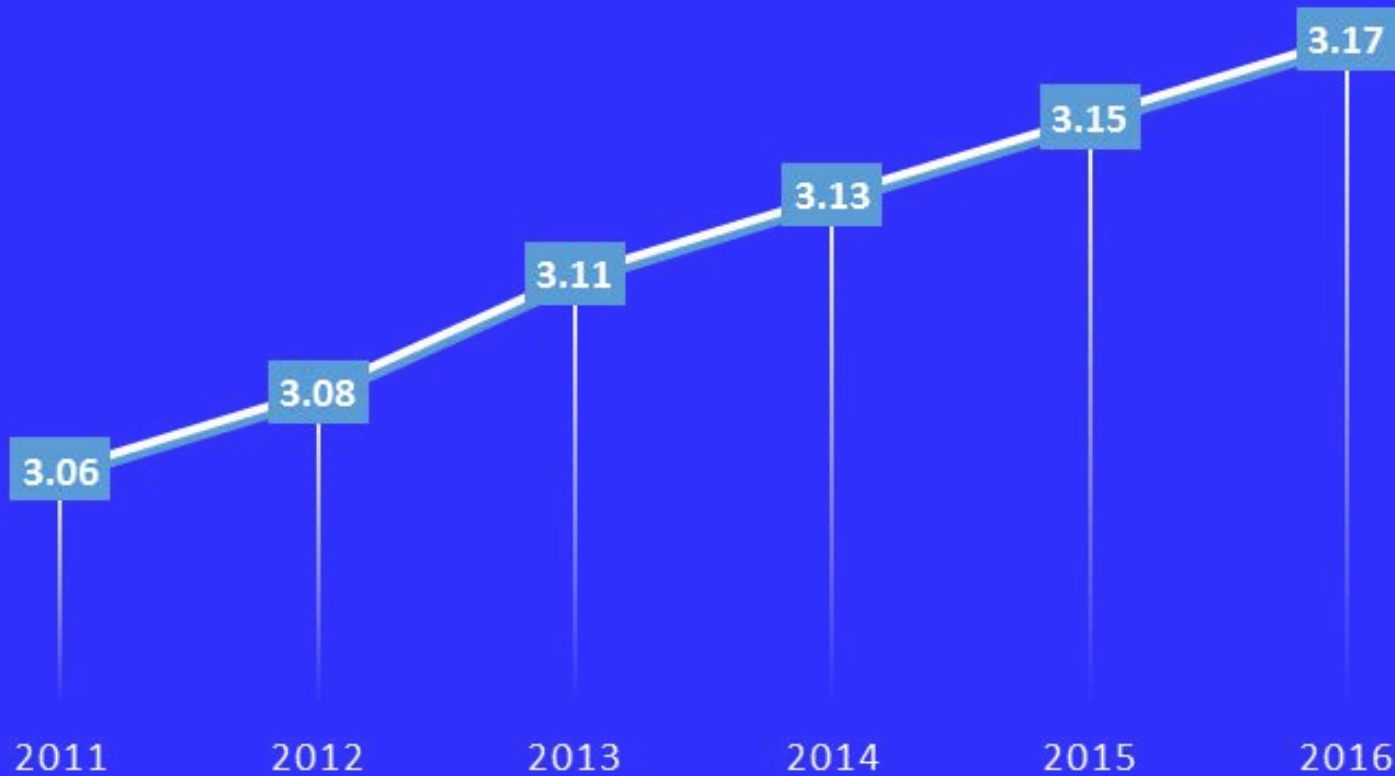
## 2016 Enrollment



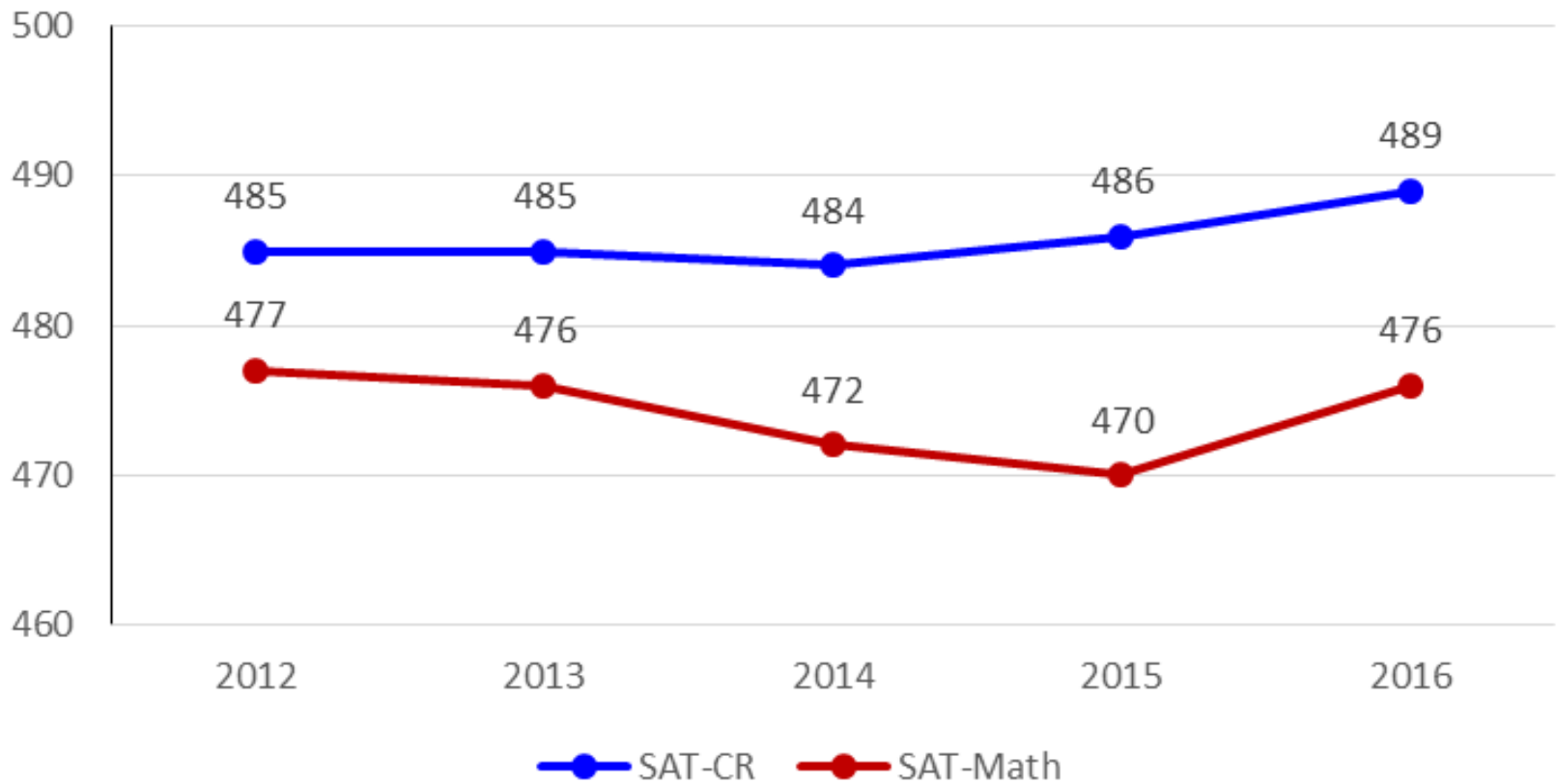
# New Freshmen Enrollment



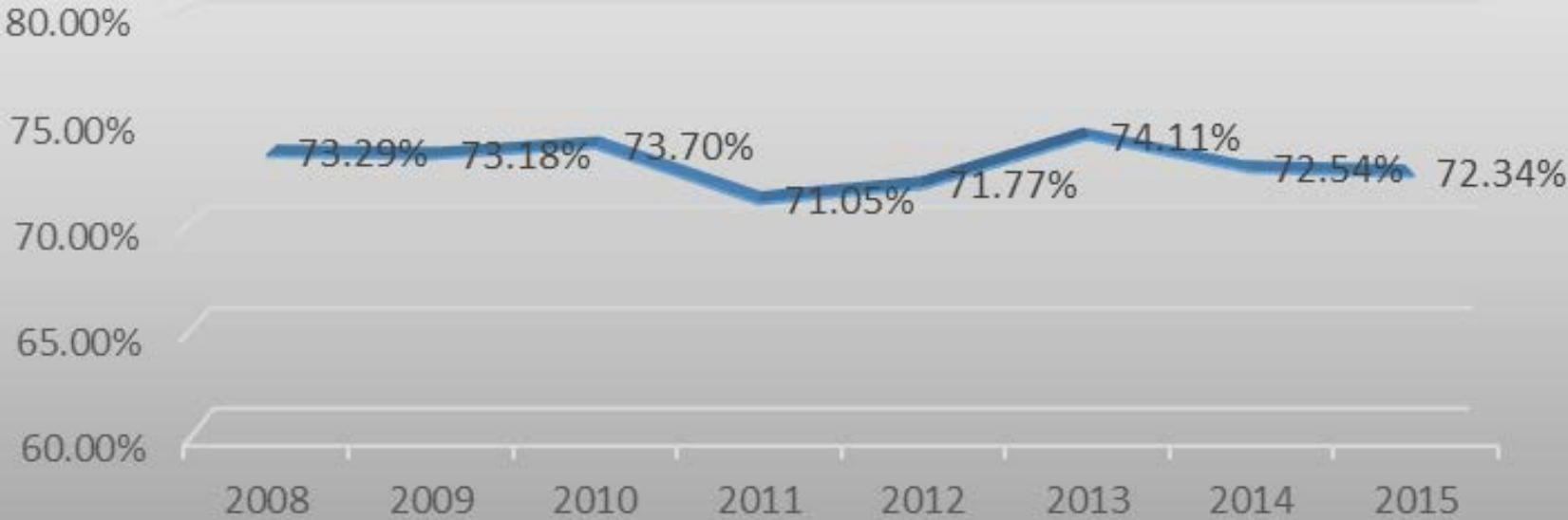
# HS GPA OF INCOMING FRESHMEN



## Entering Freshman SAT Scores



# Retention Rate



# Fall 2015 Freshmen Fall Retention

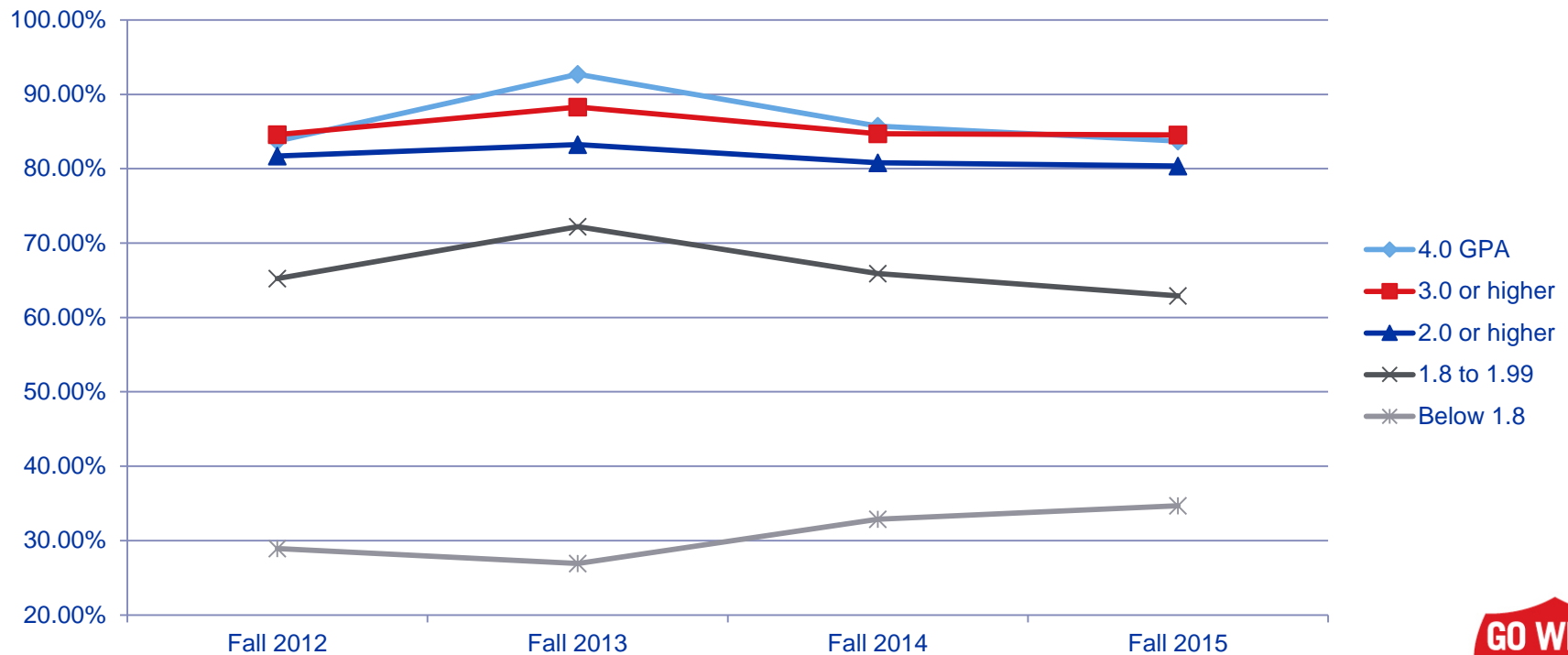
## 1st Term GPA

- 1st Term GPA over 3.0 – 84.55%
- 1st Term GPA over 2.75 – 82.78%
- 1st Term GPA over 2.7 – 82.6%
- 1st Term GPA over 2.5 – 82.1%
- 1st Term GPA over 2.25 – 81.2 %
- 1st Term GPA over 2.0 – 80.37%
  
- 1st Term GPA below 2.0 – 38.75
  
- If their 1st Term GPA is below 2.0, only 75% return for Spring semester. All Freshmen average is 91.37%



# Retention

- Is performance at UWG more predictive?
  - FR to SO Retention based on 1<sup>st</sup> Term GPA





# Retention

Students who earn a 2.0 gpa have similar retention rates to students earning higher grade point averages.

<b>Fall Retention by</b>				
<b>First Term GPA</b>	<b>Fall 2012</b>	<b>Fall 2013</b>	<b>Fall 2014</b>	<b>Fall 2015</b>
4.0 GPA	83.72%	92.72%	85.71%	83.70%
3.0 or higher	84.57%	88.31%	84.71%	84.55%
2.0 or higher	81.70%	83.25%	80.79%	80.37%
1.8 to 1.99	65.22%	72.22%	65.90%	62.90%
Below 1.8	28.95%	26.93%	32.86%	34.68%



# Impacting Retention

- Fully utilize the services we already provide:
  - Faculty participating in the Early Alert System through SSC (formerly Grades First) in our freshmen and sophomore level courses. In Fall 2016 only 33% of faculty responded.
  - Students need to have graded assignments for all 1000-2000 level courses before the date to withdraw from classes and before mid-term. Bad grades can be a wake-up call before mid-terms.
  - We need to make sure graded assignments are recorded in Course Den. That is where students look for grades.



# Impacting Retention

- Complete College America Game Changers
  - Intrusive Advising – SSC
  - Co-requisite Remediation
  - Full-time is Fifteen
  - Structured Schedules
  - Guided Pathways to Success - "Guide" mobile app
  - LEAP initiative – First Year Program
  - CCEC – early intervention, post-secondary readiness, MOWR

