

UNIVERSITY of West Georgia



**Fact Book
2009-2010**

2009-2010

University of West Georgia

Fact Book



Prepared by: Erma Shooks
Department of Institutional Research and Planning
Carrollton, GA 30118
678-839-6449



Dear Students, Faculty and Staff Colleagues, Alumni, and Friends of the University:

I am delighted to report to you that we continue to make progress along our trajectory to be a destination university – one which will be regarded in the minds of good high school students, and their parents, counselors and teachers, as a first-choice university.

In this letter, I will deliberately stay away from a discussion of the budget crisis for multiple reasons. For one thing, while there is no denying that the budget reductions we face are so large and so serious as to impact every part of the University of West Georgia, I believe that it is best that my letter be a strongly positive one; there is genuinely very much of which we all can be proud. For another, the budget crisis is a rapidly changing situation and I am reasonably sure that what I write today will have changed by the time this Fact Book is public; and also, a reasonably thorough description of the impact of budget cuts on our excellent and very efficient university might take more space than we can afford!

The fall semester opened with a record-breaking enrollment of 11,500 students, and student credit hours taken reached record levels as well. We crossed another landmark point in our history when enrollment exceeded 10,000 full-time equivalent (FTE) students for the first time.

The university's growth also included the development of new campus facilities that provide state-of-the-art academic, recreational and residential opportunities. The Coliseum opened as the new home for the Department of Health, Physical Education and Sport Studies as well as the arena for intercollegiate Wolves basketball and volleyball. The Coliseum may well be the largest enclosed facility between Atlanta and Birmingham with a maximum capacity of 7,500 seats for campus and community events.

The growth has continued with a unique and beautiful Greek Village built for fraternities and sororities. The Village includes a community building, recreational facilities, outdoor green space and 18 residential homes.

And our newest addition, University Stadium, is the centerpiece of a \$29 million Athletics Complex, which will be completed in stages. The facility will feature sites for women's soccer, a women's varsity softball field, a women's fieldhouse and additional practice fields for soccer and football.

Other examples of our theme of *Educational Excellence in a Personal Environment* follow:

The Princeton Review has continually recognized student satisfaction and the strong degree programs at West Georgia. The university has been published in America's Best Southeastern Colleges every year since 2004.

The Princeton Review selected the Richards College of Business as an outstanding business school for a fifth consecutive year and is including the college in its "Best 301 Business Schools: 2010" publication.

Both national recognitions are based on a survey regarding the college's academic programs and student satisfaction, as well as the university's student body and campus life.

West Georgia's online WebMBA program has won recognition as one of the Top 25 Best Buys in the country by GetEducated.com, and The Princeton Review has listed our WebMBA as a "top choice" for an online MBA.

West Georgia also offers outstanding creative programs in the Arts. A television and radio station, three theatres and several recital halls offer many opportunities for student accomplishment.

The University of West Georgia ranks near the top in the state in enrollment numbers for its online courses and programs. UWG was among the first institutions in the University System of Georgia to offer online courses back in the 1990s and enrollment has increased from 250 students in 1997 to 4,347 in 2010.

Two traditional points of pride continue to bring distinction to the institution:

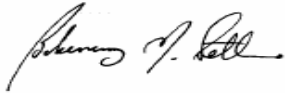
For 38 consecutive years, the UWG Debate team qualified for the National Debate Tournament, a record that is exceeded by only four universities in America: Harvard, Dartmouth, University of Southern California, and the University of Kansas.

In eight of the past 12 years, UWG students have had more papers accepted at the very competitive National Collegiate Honors Council than any other institution in America.

And the list goes on...

Onward and Upward, West Georgia!

Sincerely,



Beheruz N. Sethna, Ph.D.
Professor of Business Administration, and
President of the University

University of West Georgia

Fact Book

Table of Contents

The University

History of the University	2
Campus Description	2
Map of Campus	4
Mission Statement	5
Vision Statement	5
Strategic Plan	6
Four Guiding Principles and Twelve Goals	7
Accreditations and Affiliations	8
The Honors College	8
Student Programs and Services	8
Intercollegiate Athletics	11

The Administration

Administrative Organization	14
University System of Georgia	14
University System of Georgia Institutions	15
University System of Georgia Board of Regents	15
University System of Georgia Administrative Personnel	16
University of West Georgia Administration	18
Departments of Instruction and Chairpersons	18
University of West Georgia Organization Charts	19

Enrollment and Credit Hour Production

Detailed Composition of UWG Student Body	24
Geographic Origin of Students by Classification	26
Geographic Origin of Students	27
Admissions Data	28
SAT Scores of Entering Freshmen	29
Undergraduate Applicant Profile	29
Total FTE for Undergraduate and Graduate Students	30
Detailed Enrollment and Credit Hour History	31
Credit Hour History by College	32
Continuing Education	38
Distance and Distributed Education Center	38
Off Campus Programs	39
Retention Rates of Fall First-Time Full-Time Freshman Students	39
Student Financial Aid	40
Student Financial Aid Growth	42

Degrees

Degrees and Majors Offered	44
Degrees Conferred	46



Faculty

Faculty Profile	52
Composition of Faculty	53
Faculty Profile by College	54
Average Salary by Employee Category	59

Research

Sponsored Operations	62
Fiscal Year(s) Assessment	62
Directors of Sponsored Projects	63
Faculty Research Grants	66
Faculty Research Enhancement Awards	69

Financial Information

Budgeting and Assessment Cycle	72
University Revenue by Source	73
University Operating Expenses	74
Distribution of the Student Dollar	76
Statement of Net Assets	77

West Georgia Foundation, Development and Alumni Relations

University of West Georgia Foundation	80
Foundation Officers and Trustees	81
Annual Fund Drive Results	82
Scholarships	83
West Georgia Alumni Association	88
Geographical Distribution of Alumni State of Georgia	89
Geographical Distribution of Alumni United States	90

Campus Planning and Facilities

Campus Planning and Facilities	92
Land Holdings	92
Campus Facilities	93

Information Resources and Technology

Irvine Sullivan Ingram Library	98
Library Acquisitions	100
Information Technology Services	101

Institutional Research and Planning

Mission	104
History	104
Goals	104
Major Projects	105

The University



The University

<http://www.westga.edu/>

History

The University of West Georgia, a four-year institution of the University System of Georgia, is a co-educational, residential, liberal arts institution located in Carrollton, Georgia.

Carrollton, the seat of Carroll County, is about an hour drive from Atlanta. According to the 2007 Census estimate, Carrollton has a regional population of 111,954 with retail shopping, medical, educational, entertainment, financial, and recreational services, making it one of Georgia's fastest growing industrial areas.

The University of West Georgia was established in 1906 as the Fourth District Agricultural and Mechanical School, one of twelve such institutions by the State of Georgia between 1906 and 1917. Twenty five years later, an Act by the Board of Regents of the University System of Georgia changed Carrollton A&M School to West Georgia College, a junior college. Dr. Irvine S. Ingram, who had been principal of the A&M School, was named the institution's first president. In 1939, the College was authorized by the Board of Regents to add a three-year program in elementary education.

In 1957, the institution was authorized to confer the B.S. degree in education, making it a four-year college within the University System of Georgia. Two years later, West Georgia College added the Bachelor of Arts degree in English, history, and mathematics.

During the following years, West Georgia College became one of the fastest growing institutions of higher learning in the South. From an enrollment of 576 in 1957, the institution's student body reached a milestone of 11,500 in Fall 2009. West Georgia offers twelve undergraduate degrees with majors in 60 different fields.

In 1967, the Board of Regents authorized the establishment of a graduate program at the master's level. Ten master's degrees are offered in 33 areas of study. The Specialist in Education degree is offered in 9 areas of study and a doctoral degree in 3 areas.

In 1983, the Board of Regents approved the External Degree Program as a cooperative effort between Dalton College and West Georgia. Since its inception, close to 400 degrees have been conferred through the Center. The Board of Regents in 1988 approved the opening of Newnan Center, a joint effort involving the Newnan-Coweta Chamber of Commerce and other businesses, civic and educational leaders in the area. With an enrollment of 540 in Fall 2009, the Newnan Center provides access to higher education for residents of Coweta County.

In June 1996, the Board of Regents of the University System of Georgia officially changed the name of West Georgia College to the State University of West Georgia and to the University of West Georgia in 2005.

The University's growth is accommodated by the following additions:

Fall 2009, the University of West Georgia opened a 254-bed Greek Village. The Village includes a community building, outdoor basketball and volleyball court, outdoor green space, parking, and half a dozen six-bed townhouses. Each house has a living/chapter room, kitchen, laundry facilities, single and double bedrooms, and semi-private bathrooms. This addition makes 3,258 beds available to the students.

The Coliseum, a 7,500 capacity facility, is the new home for UWG Wolves basketball and volleyball programs and the Department of Health, Physical Education and Sports Studies which opened January 2009. Its schedule will include athletic and community events, classes, concerts, corporate meetings, local high school graduations, and UWG orientations.

West Georgia Wolves football team played its first game in the new 9,000-seat stadium on September 5, 2009. The facility, located on approximately 250 acres, will be completed in stages to include locker rooms, weight and training rooms, several athletic programs, and offices for the Athletics Department.

The Campus

The campus is a unique blend of old and new. Boasting numerous cultivar of trees, shrubs, and flowers, the campus is dotted with structures of the early 1900s, as well as buildings exemplifying the most contemporary modes of architecture.

West Georgia began as an A&M school in 1906 on the three-block-long expanse shaded by old oak, elm, and maple trees that surrounds a number of brick buildings and stretches into a semi-circle on front, or "Old Campus."

A modern academic complex composed of a library, social science, humanities, and math-physics buildings lies beyond the "Old Campus." A business school annex was added in 1985. Other buildings in the area include a three-story student center, a three-story campus center, and a health services building. A performing arts center, containing two theatres, a black box and a main stage, which seat 250 and 455 respectively was completed in 1989.

The central focal point of the University's core curriculum classes is situated across from the Performing Arts Center—the Technology-enhanced Learning Center (TLC). The \$20 million, 110,000-square-foot, three-story, state-of-the-art building was completed in the summer of 2001. Academic departments housed in the TLC include Computer Science, English, Chemistry, and History. The defining feature of the TLC is the "smart" classrooms, or studio classrooms, in which every student has a computer at his or her desk. Other features include three lecture halls, a seminar room for each department,



one general-purpose computer lab, and several chemistry labs, in addition to faculty offices. In the lecture halls, students have a place to plug in their laptops, and in the lobby area, computer screens offer students a chance for a quick revision of their assignments between classes. Labs and lectures are integrated, and experiments are done on computers. The University believes that this high-tech teaching method increases student learning and is proud to be one of only three institutions in the University System of Georgia to use this technology.

Much of the University's other recent physical development occurred on the westside of campus. The Education Center, a structure unique in the University System, contains five large lecture-demonstration rooms, which by moving the sliding partitions; serve as a 1,000-seat auditorium. It also features an instructional materials center, television and sound recording studios, an audiovisual laboratory and dark room, counseling rooms, group observation rooms, study carrels, and other areas for independent study.

Adjacent to the Education Center is the Biology Building, a facility with numerous laboratories, lecture halls, and the latest scientific equipment. The Education Annex, a 42,000-square-

foot facility, opened in 1995. This facility houses education and nursing faculty offices, classrooms, laboratories, and the campus day-care center.

A complete renovation of the University's baseball complex was made possible by a gift from the E. Woodfin Cole family in Carrollton. The 20,000-square-foot, two-level Murphy Field house provides offices for all athletic personnel, a football locker room, academic support area, sports information offices, a sports medicine area, and meeting rooms.

Kennedy Interfaith Chapel and Bonner House are two of the oldest buildings on campus. The Chapel was owned first by the Episcopal Church and later by the Catholic Church. When the local parish built a new church, its members donated the Chapel to the University for non-denominational use. In 1964, after the Chapel was moved to the campus, the late Robert F. Kennedy dedicated it to the memory of his brother, the late President John F. Kennedy.

The Bonner House, constructed in 1843 as a plantation home, is the oldest building on campus. The frame colonial structure has served various purposes through the years.

Source: UWG Undergraduate Catalog 2009-2010

Campus Map



Mission of the University of West Georgia

The University of West Georgia seeks to achieve preeminence in providing educational excellence in a personal environment through an intellectually stimulating and supportive community for its students, faculty, and staff.

Purpose

The University, a charter member of the University System of Georgia, is a comprehensive, residential institution providing selectively focused undergraduate and graduate education primarily to the people of West Georgia. The University is also committed to regional outreach through a collaborative network of external degree centers, course offerings at off-campus sites and an extensive program of continuing education for personal and professional development. Opportunities for intellectual and personal development are provided through quality teaching, scholarly inquiry, creative endeavor, and service for the public good.

Essential Activities

West Georgia educates students in a range of disciplinary, interdisciplinary, and professional programs at the baccalaureate level. It also offers a significant number of graduate programs at the master's and educational specialist's levels. The University has a commitment to education at the doctoral level in the field of education as well as other selected areas. In addition to being accredited as an institute of higher education, the University maintains national accreditation or recognition in most undergraduate and graduate fields of specialization.

The University of West Georgia pursues its purpose through the following activities:

- Instruction in general education and the promotion of life-long learning that together lay the foundations of what is essential to being an educated person.
- Faculty-directed student research and professional activities that complement classroom learning through learning by doing and reflection on doing.
- Faculty research, scholarship, and creative endeavors that promote knowledge, enhance professional development, contribute to quality instruction, and provide for significant student involvement and field-based experience.
- Educational opportunities such as the Honors College and, for extraordinary high school-aged students, the Advanced Academy of Georgia that serve the needs of exceptionally prepared students.
- Systematic investigation of teaching and student learning that fosters innovation in teacher, professional, and pre-professional preparation.
- The use and exploration of existing and emerging technologies that improve opportunities for faculty and student learning.
- A broad range of public service activities and proactive partnerships that: promote more effective utilization of human and natural resources; contribute to economic, social and technical development; and

enhance the quality of life within the University's scope of influence.

- Student services, including outstanding first-year experiences, which increase opportunities for academic success and personal development and enhance the climate of campus life.

Values

The University of West Georgia values the following:

- High-quality general education, undergraduate and graduate programs, that:
 - 1) Are grounded in a strong liberal arts curriculum;
 - 2) Impart broad knowledge and foster critical understanding needed for intellectual growth, personal and social responsibility, cultural and global literacy and lifelong learning;
 - 3) Emphasize disciplinary rigor;
 - 4) Foster the development of effectiveness in communication critical and independent thinking, problem solving, and the use of information resources and technology; and
 - 5) Create a learning community dedicated to instructional excellence where close student-faculty interaction enhances both teaching and learning for a diverse and academically well-prepared student body.
- Cultivate of a personal environment.
- Affirmation of the equal dignity of each person by valuing cultural, ethnic, racial, and gender diversity in students, faculty, and staff.
- Practices that embody the ideals of an open democratic society and that cultivate an environment of collegiality.

These commitments culminate in educational experiences that foster the development of thoughtful and productive leaders and citizens who make a positive impact throughout an increasingly global society.

Vision Statement for the University of West Georgia Year 2000 and Beyond

The University of West Georgia will be a leader within the University System of Georgia in providing educational excellence in a personal environment.

The University of West Georgia will seek to create for students from various backgrounds every possible avenue to intellectual achievement, personal development, and leadership potential without compromising academic excellence. The University will maintain close contact with all people of the region, be responsive to their needs while raising their aspirations, and generating a more highly educated populace.

The University of West Georgia will be recognized for excellence in teaching and learning, research, and public service in undergraduate, graduate, and continuing education. The University will be recognized as being fundamental to the educational, social, cultural, technological, and economic advancement of the region and state.

Specifically, the University of West Georgia will be characterized by:

- Educational Excellence evidenced by outstanding educational experiences, national and regional recognition of selected programs, faculty who excel in their disciplines, superior staff support, and an increasingly capable student body. At West Georgia, teaching, research, and service will be intricately intertwined and supportive of each other.
- A Safe, Supportive Community committed to enhancing learning, through close contracts between students and faculty, small classes taught by senior faculty whenever possible and through dedicated staff who help provide a vibrant campus life.
- An Outstanding, Diverse Faculty and Staff who demonstrate effective communication and teaching skills; utilize new technologies and innovative strategies to enhance student learning; and exhibit the highest standards of intellectual achievement, research, and continuing growth.
- Educational Opportunities for a Wide Range of Academically-Prepared Students that include a strong academic knowledge base for the development of leadership skills and life-long learning. The University of West Georgia will help ensure its students future success by developing the ability of individuals to access, interpret, analyze using current technology and make use of relevant facts, information, and knowledge to think critically, solve problems, work with, and communicate effectively with other.
- West Georgia will develop the whole individual so that as alumni they will continue to be contributing members of their families, institutions, communities, state, nation, and world.
- Educational Opportunities for Exceptional Students: West Georgia will build a reputation for having an Honors College with a distinctive liberal arts curriculum and additional peaks of excellence in selected undergraduate and graduate majors and professional programs, with student involvement in faculty research, and themes that run across the curriculum, such as communication, leadership development, interdisciplinary studies, critical thinking, and problem solving.
- A Region-Wide Learning Community that Engages and Inspires Traditional and Non-Traditional Students to become educated persons with global and multi-cultural perspectives and advanced technological knowledge. The University will help develop both ethical principles and intellectual flexibility for the future and will celebrate and energize the human spirit through respecting and supporting individual differences in learning styles, identities, and personal/professional goals.
- Pro-active Partnerships with Public and Private Schools and Other Educational Institutions, Business, Industry, Government, and Cultural and Social Organizations in order to analyze, synthesize, evaluate, predict, and respond to changing state and regional needs, to support Georgia's educational, economic, and cultural development, and to ensure graduates' readiness for the present and future.
- A Unified, Clearly Focused, University with each part contributing to and understanding how every other part contributes to the mission of the University and to the larger society.

The Strategic Plan, 2010 - 2015

UWG's Four Strategic Guiding Principles

1. Academic Programs Balancing Liberal Arts with Professional Preparation
2. A Campus that is Safe, Engaging, and Exciting
3. Steady and Intelligent Enrollment and Resource Growth
4. Meaningful Engagement with Off-campus Communities

The Strategic Plan is designed to shape the University of West Georgia for the next five years in such a way as to place it as a destination university, particularly among peer universities in the state of Georgia and among those universities in the nation granting doctoral degrees in programs that balance liberal education with professional preparation. In addition to this bold pledge of shaping, creating, and maintaining such a distinctive educational mission as expressed in its degree programs, it also promises to be a leader in campus safety and campus life. That is to say, West Georgia will be guided by a commitment to a safe and engaging campus. West Georgia predicts a growing enrollment, and the University is committed to a steady and smart growth that together with careful resource management will enhance our primary mission of academic excellence in a personal environment. Finally, we are committed to our external community from Atlanta to India to Japan, but we are quite mindful of our local community of Carrollton, Georgia, and will build on all of our current obligations of giving students opportunities for service work in the community even as we invite the community into our campus and thus work together to develop our neighborhood as a recognizable university village.

The Four Guiding Principles and Twelve Goals

Guiding Principle 1: The University will develop and support a distinctive set of quality academic programs ranging from bachelors to doctorates that blend the best of professionalized liberal education, experiential learning, and individual transformation.

Goal 1: Every undergraduate academic program will demonstrate a distinctive blending of liberal education, professional competencies, and experiential learning, preparing students to be ethically responsible and civically engaged professionals in the global economy of the 21st century.

Goal 2: Every undergraduate student will be advised to take advantage of one of multiple available learning communities. Learning communities that are available to students will include communities organized by living arrangement, by year in program, by other co-curricular associations – Honors Program, Advanced Academy, Band, Athletics, Debate, or program in the major.

Goal 3: The University will endeavor to increase enrollment in and graduation from graduate programs, including doctoral programs, that have as their mark a practical professional purpose, experiential learning opportunities, and an intellectual program informed by a foundation of liberal education.

Guiding Principle 2: Every responsible agency of the University will be dedicated to creating a safe, supportive, and engaging campus life.

Goal 4: The University will maintain an environment that is safe and conducive to learning.

Goal 5: The University community will provide a balanced variety of cultural, recreational, leisure, and informal education programming opportunities for faculty, staff, and students that enhance the quality of campus life.

Goal 6: All units will strive to improve the compensation and working environment of faculty and staff in order to recruit and retain the best individuals.

Guiding Principle 3: The steady enrollment growth over the next five years will be managed to enhance the University's dedication to educational excellence in a personal environment.

Goal 7: The University will endeavor to increase our overall enrollment to 14,500 by the year 2015.

Goal 8: With our enrollment growth West Georgia will remain committed to the following targets of academic quality: faculty-student ratio of 18 to 1; average class size of 29; full-time to part-time faculty ratio of 4.4 to 1.

Goal 9: West Georgia will develop several new facilities to improve quality along with meeting capacity demands due to enrollment growth, such as new classroom space for Nursing and Art.

Guiding Principle 4: The University will increase its fund-raising and community service to match the needs of all of our stakeholders and communicate our story effectively.

Goal 10: Capital Campaign: The Development Office will prepare for a capital campaign to assist in meeting the long-term needs of the University of West Georgia

Goal 11: Communication and Marketing: The Office of University Communications and Marketing (UCM) will internally and externally promote the missions and goals of the strategic plan. This will be achieved by aligning the institution's integrated marketing plan (advertising, visual identity standards, web presence, media relations, etc.) with the strategic plan.

Goal 12: Community Relations: The University will engage the local community educationally, culturally and recreationally.

Accreditations and Affiliations

The University of West Georgia is accredited by the Commission on Colleges of the Southern Association of Colleges and Schools (1866 Southern Lane, Decatur, Georgia 30033-4097; Telephone number 404-679-4501) to award bachelor's, master's, education specialist's and doctorate degrees. Accreditations also include the following:

- The Association to Advance Collegiate Schools of Business (*International*)
- American Chemical Society
- American Speech-Language Hearing Association
- Commission on Collegiate Nursing Education
- Computing Accreditation Commission of the Accreditation Board for Engineering and Technology
- Council for Accreditation of Counseling and Related Educational Programs
- Council for Humanistic Transpersonal Psychologies
- National Association of Schools of Arts and Design
- National Association of Schools of Music
- National Association of Schools of Public Affairs and Administration
- National Association of Schools of Theatre
- National Council for Accreditation of Teacher Education

Organizations in which the University holds institutional membership include the American Council on Education, the American Association of State Colleges and Universities, the American Association of Colleges for Teacher Education, the Conference of Southern Graduate Schools, the Georgia Association of Colleges, the National Association for Foreign Student Affairs, the National Business Education Association, and the National Collegiate Honors Council.

The Honors College

The Board of Regents, June 1999, elevated the honors program to the Honors College, making it the first in the State of Georgia. The Honors College includes the Advanced Academy of Georgia, the Select Student Program, HOPE-ACCEL program for jointly enrolled high school juniors and seniors, and the Intercollegiate Debate Program.

The Honors College does not award degrees, but offers a distinctive curriculum featuring special sections of courses required in the core curriculum and junior and senior seminars. The courses are designed to offer more opportunities for research in preparation for graduate or professional school and place more responsibility on the individual student.

Admission to the Honors College is open to entering freshmen who meet two of the following three criteria: (1) a combined SAT score of at least 1200 or ACT Composite score of 26, (2) a minimum score of 610 on the Critical Reading portion of the SAT or an ACT English score of 27, or (3) a high school grade point average of 3.5 or higher. The College is also open to any student who has completed 15 or more hours at West Georgia with an overall GPA of 3.2 or higher. Students must enter no later than the beginning of their sophomore year. Honors courses are open on a space available basis to any student with a cumulative GPA of 3.2 or higher who has completed 15 or more credit hours.

Source: UWG Undergraduate Catalog 2009-2010

Student Programs and Services

The University of West Georgia also complements the academic program of the University by providing a variety of educational services, developmental programs, and student activities designed to enrich the students' college life.

EXCEL: Center for Academic Success, is devoted to the academic success of all students with special programs for first year, transfer, and undecided students.

EXCEL offers the following services:

- Tutoring in all the undergraduate core curriculum courses;
- Academic advising and registration for all undecided students;
- Career/Major Exploration programs which include, the strong vocational interest inventory and the computer software program, DISCOVER;
- HOPE and peer mentor programs;
- Training in computer basics such as word processing, e-mail use, library searches and surfing the net;
- Weekly instruction sessions in study skills that are appropriate for college; and
- Trouble shooting for any questions or concerns.

All services of the Center are free of charge.

Source: UWG Undergraduate Catalog 2009-2010



Multicultural Achievement Program (MAP) is housed in the EXCEL Center and assists minority students academically. MAP provides an array of programs and services to meet the needs of minority students:

- Certified peer mentors, who are campus leaders and academic achievers, work with small groups of new students while servicing as role models, helping freshmen establish good study habits, and being a referral agent to other campus resources.
- Seminars related to achieving academic success and enhancing cultural awareness.
- A second year program is offered which guides students with exploring majors and careers and provides opportunities for second year students to engage in a variety of learning opportunities awareness.
- Minority alumni serve as mentors to juniors and seniors and lead career seminars.
- The academic progress of students is monitored, and individual academic coaching sessions are available in note-taking, time management and various study skills.

West Georgia's fine arts departments offer many opportunities ranging from theatre to opera to exhibitions for student performance and cultural enrichment. Both musical and theatrical productions are scheduled year-round. The Concert Choir, Chamber Singers, Marching Band, and Opera Workshop are available to students interested in music. Several areas in the Humanities Building are used for student, faculty, and traveling art exhibits.

The *Campus Center*, is the center for campus life. Overlooking Love Valley, it is a recreational center for students to learn, play, relax, and be connected to the campus.

Offices, activities, and services within the Center are:

- Center for Student Involvement
- Intramural and Recreational Services
- Campus Center Administration
- Game Room
- Fitness Facility
- Aerobic Rooms
- 1/8 Mile Track
- 25 and 50 foot Climbing Walls
- Meeting Room
- Ballroom
- 2 Gyms
- Outdoor Recreation Center
- TV Viewing Area

Students can find job opportunities in the Campus Center at www.westga.edu/~campus. The Student Government Association (SGA), Student Activities Council (SAC), Black Student Alliance (BSA), and Creek Leadership Governing Councils offices are on the third level.

The *Center for Student Involvement* facilitates student engagement, leadership, and involvement through a variety of programs and services. The office coordinates the registration process for over 130 student organizations which involve over 4,500 students and provided 800 individual programs and activities in 2008-2009. The staff provides advisement for a vibrant Social Greek system and governing councils (National Pan-Hellenic Council, the National Panhellenic Council, and the Interfraternity Council), that involved over 10 percent of the undergraduate population. The staff also advised the Student Activities Council, which provides a number of diverse student programs including Homecoming, Welcome Back Week, and Spring Fling, as well as comedy, music and multicultural programs. The office also coordinates the annual Campus Activities Awards Program and provides numerous leadership training programs throughout the year through the UWG Lead (Leadership Education and Development) Program. Leadership programs included Lead Weekend, Leadership in the Wilderness, an Emerging Leaders Program and the popular Leadership To Go.

Through excellent *Campus Recreation*, the University provides opportunities for recreation, social contact, and healthy exercise. Over the year, 220,000 fans and participants across 120 teams attend various leisure programs including football, softball, basketball, volleyball, tennis, aerobics, paintball, ultimate frisbee, golf, soccer, regional adventure trips, and individual gaming and sporting events. UWG intramural teams participate in state and national tournaments and have won various state and national titles. Also, participants can enjoy the lighted athletic field and tennis courts, fitness and game rooms, climbing wall, gymnasium, fitness trail, personal training and Olympic Track. The Department maintains an outdoor Rental Center where members of the Campus Center can checkout outdoor equipment for sports such as: canoeing, kayaking, skin diving, camping, back-packing, and other outdoor activities. Various group exercise classes are held weekly and fitness instructors can assist individuals schedule personal workout programs.

The *University Bookstore* carries all textbooks, materials, and school supplies necessary for students' use in their classes. The Bookstore also offers a wide selection of imprinted merchandise and clothing, office supplies, general books, magazines, computer software, greeting cards, gifts and art supplies. The Bookstore is also a pick-up station for UPS.

New and used textbooks are available at the University's web site: www.bookstore.westga.edu.

The *Student Development Center* provides career, mental health, and academic counseling, plus support services for disabled students. The Center provides training and supervision for select graduate students. In the past year, approximately 600 students were seen for personal, academic and career counseling. More than 1,000 students participate in group and developmental programs offered each year. Six of the eight counselors on staff are licensed and hold a specialist or doctoral degree. The Center also provides 680 disabled students with assistance in physical and academic access to campus and classroom programs.



The *Department of Career Services* provides a comprehensive career development and employment program for all students and alumni of West Georgia. Available services include job search/career coaching, resume referral to employing organizations, student employment opportunities, and career-related learning experiences through professional practice programs.

Specific services, which the department offers, include:

- Career Employment assistance (job listing services, job search seminars, special career events, and other services).
- Student Employment (on and off campus part-time, seasonal, temporary jobs);
- Professional Practice Program opportunities, including internships and cooperative education (major and/or career related work experience);
- Cooperative Education provides a well-balanced combination of college study and periods of hands-on experience in a work setting related to the student's major and/or career goals.
- Internships provide a type of community-based learning experience and prepare students for services in their chosen field of study. Internships aid the student to develop their intellectual capacity, understand and appreciate democratic institutions, and stimulate students toward the examination and development of personal and professional values.

Career Services		
Student Employment Program	FY2008	FY2009
Student Visits to Office	4,470	4,663
Student Referrals	4,792	4,724
Placements	1,216	1,138
Wages Generated	3,651,241	3,272,857
Volunteer Services Office		
Student Visits to Office ¹	382	531
Student Referrals	572	504
Student Opportunities	122	138
Professional Practice		
Counseling Contacts ¹	382	531
Student Referrals	445	297
Student Placement	98	87
Participating Employers	70	71
Wages Generated	289,249	223,995
Career Employment Program		
Student Visits to Office	1,174	1,103
Resume Referrals	619	481
Job Postings	3,776	1,532
Overall Employer Recruitment	248	274

¹Combined number of students for Volunteer Services and Professional Practice Program

Sources: *Career Services*

The *Department of Housing and Residence Life* provides a living/learning community environment that complements the educational process of the University. Nine residence halls house more than 2,500 West Georgia students. Unmarried freshmen that do not reside with parents within a thirty-mile radius of the University are required to live on campus. We offer co-ed and single gender housing options for students who live on campus. Co-ed residence halls have separate areas for men and women, typically separated by wings. Residence halls provide students with the convenience of being close to campus life and its activities as well as comfortable and attractive surroundings. On campus living provides each student with the community living experience, which fosters the development of disciplined minds, social conscientiousness, and responsibility for governing hall affairs. In addition, the department offers a variety of social, educational, and recreational programs which are provided to promote individual growth and development.

Student Housing			
Residence Hall	Type	Fall 2008	Fall 2009
Occupancy			
Arbor View	Co-ed	579	523
Bowdon	Co-ed	304	300
Boykin	Women	117	164
Downs	Co-ed	292	281
Gunn	Co-ed	88	81
Strozier Complex	Co-ed	169	164
Tyus	Co-ed	169	135
University Suites	Co-ed	601	513
Watson	Women	276	285
Greek Village			261
Level			
Academy		88	81
Freshman		1,742	1,812
Sophomore		425	611
Junior		207	122
Senior		110	81
Graduate		10	0
Other*		13	0
Total		2,595	2,707

Students at UWG enrolled at Georgia Highland and some from the ATP program.

Source: *Office of Housing and Residence Life*

Health Services provides diagnosis, first aid, and treatment of minor or short-term acute illnesses or injuries under the supervision of a physician. Health Services is opened from 8:00 a.m. to 6:00 p.m. Monday through Thursday and 8:00 a.m. to 5:00 p.m. Friday. Students are referred to other medical personnel or facilities for special services such as x-ray, surgery, and dentistry. Medication necessary for treatment is usually available at the Center. In addition, many tests performed in the Health Center laboratory are covered by the student's health fee.

Health Services		
Patient Services	FY2008	FY2009
Patient Visits	26,558	27,989
Prescriptions Filled	41,225	46,336
Lab Tests	13,971	14,777
Patients seen by Physician	1,473	1,479
Patients seen by Nurse Practitioners	17,090	17,443
Allergy-Injections	305	166
Breathing Treatments	340	158
Gynecology	2,015	2,076
Minor Surgery	42	7
Meningitis Shots	18	12

Source: Health Services

Intercollegiate Athletics

University of West Georgia (UWG) Athletics is a member of NCAA Division II and the Gulf South Conference (GSC), the largest Division II conference in the nation. The university currently offers 11 varsity sports: baseball, men's and women's basketball, men's and women's cross country, football, men's and women's golf, women's soccer, women's softball and women's volleyball.

UWG proudly boasts athletic facilities that rank among the finest of any Division II program in the nation. Since 2009 six teams have moved into new, state-of-the-art home venues. The Coliseum serves as home to the men's and women's basketball and volleyball teams; softball and soccer have moved into new, on-campus home stadiums, while UWG football now plays its home games in University Stadium.

The new homes for football, soccer, and softball are part of the sprawling UWG Athletic Complex. Beyond the new playing sites, this facility includes a women's field house for the soccer and softball programs, a soccer practice field, football practice fields, and the soon-to-be completed Athletic Office Building that includes locker room and training room facilities. Beyond, plans are on the drawing board for a new baseball facility within the coming years.

West Georgia teams are no strangers to success. From a 1974 Men's Basketball National Championship to the 1982 NCAA Football, UWG Athletics continues to a strong contender in Gulf South Conference and NCAA events. Men's Basketball has participated in eight NCAA Regional Tournaments and 13 GSC post-season events since 1994. In 2002 the team won both the GSC and NCAA South Region titles, thus earning the school's first ever berth in the Division II Elite Eight. Baseball captured the GSC title in 1998, earning the right to host the NCAA South Central Regional. UWG captured the tournament to earn a berth in the Division II World Series. Beyond, the football program won GSC titles in 1997, 1998 and 2000, and has advanced to the NCAA Division II Playoffs on four separate occasions.

Women's volleyball earned GSC Tournament berths from 2004-2007, winning the school's first GSC title and advancing to the NCAA Tournament in 2007. Women's basketball has a lengthy record of accomplishment, including two GSC titles (1992, 1994) and advancing to the NCAA Tournament in many occasions, most recently in 2008.

Both men's and women's cross country teams enjoy long records of GSC success, combining for eight league crowns since the mid-1990s. In 2000 the women's cross country team captured the NCAA South Region title, and in 2003 claimed the league's individual title. Both programs continue to be among the GSC's best and appear regularly in the regional rankings.

UWG's newest sports programs, women's soccer, and men's and women's golf are also making a big contribution to the school's winning tradition. The soccer program has three times advanced to the GSC Tournament. Both golf teams have enjoyed success in regular season and GSC Tournament play, including the men's team twice (2007, 2009) qualifying a player for the NCAA Regional Tournament.

Athletics has always played a major role in campus life at the University of West Georgia. The commitment is now stronger than ever to field successful teams with talented student-athletes who succeed in both the classroom and on the field of play.

Source: Intercollegiate Athletics

The Administration



Administrative Organization

The University System of Georgia

The University System of Georgia's Board of Regents was created in 1931 during a reorganization of Georgia State government. This Act unified Georgia public higher education under one governing and management authority.

The Board of Regents is a State constitutional board responsible for the governance, control, and management of its member institutions. The governor appoints members to the Board, who each serves seven years. The Board is composed of 18 members, five are appointed from the state-at-large and one from each of the 13 congressional districts. The Board elects a chancellor who serves as chief executive officer and chief administrative officer of the University System.

The Board oversees 35 colleges and universities: four research universities, two regional universities, 13 state universities, seven state colleges, and nine two year colleges. These institutions enroll more than 270,000 students and employ approximately 11,000 faculty and 28,600 staff to provide teaching and related services to students and their communities.

The Board of Regents of the University System of Georgia is located at:

270 Washington Street, SW
Atlanta, Georgia 30334, U.S.A.

University System of Georgia Strategic Plan

Transforming the System, Changing Lives, Strengthening the State

The Board of Regents has utilized strategic planning for a number of years to guide its policy development and annual budget requests. The Board's current Strategic Plan was adopted in August 2007.

The Plan has a theme of building capacity in every aspect of the System's operations. The Plan will direct actions that transform the System, change lives, and strengthen the State.

The Plan defines six broad goals designed to ensure the investment that the citizens of Georgia have made in their system of public higher education continues to serve the needs of future generations.

For more information on the University System's Strategic Plan, go to: <http://www.usg.edu/regents/strategic/>

The six strategic goals:

1. Renew excellence in undergraduate education to meet students' 21st century educational needs.
2. Create enrollment capacity to meet the needs of 100,000 additional students by 2020.
3. Increase the USG's participation in research and economic development to the benefit of a global Georgia.

4. Strengthen the USG's partnerships with the State's other education agencies.
5. Maintain affordability so that money is not a barrier to participation in the benefits of higher education.
6. Increase efficiency, working as a System.

The Chancellor and the Central Office staff are responsible for administering the affairs of the University System of Georgia under the general direction of the Board of Regents.

University of West Georgia

The President is responsible to the Chancellor for the operation and management of the University. The President's Advisory Committee (PAC) is the immediate advisory body to the President. This Committee consists of persons in administrative positions reporting directly to the President and others as the President believes will provide advice for the orderly, effective, and efficient administration of the Committee's affairs. Appointments are annual at the beginning of the fiscal year.

The Administrative Council is the chief advisory body for administrative activities in the academic operations of the University. It consists of the Vice President for Academic Affairs (chair), Dean of Students and Vice President for Student Services, Deans of the Graduate School, Arts and Sciences, Business, Education and Honors College; the Director of Institutional Research and Planning; Directors of Continuing Education/Public Services, Information Technology Services and the Library; the chair of the Institutional Studies and Planning Committee of the Faculty Senate; and the President of the Student Government Association.

The Planning Council is an advisory body to the President for long-range development of the University, and is expected to oversee the creation of a variety of plans extending over three or more years into the future. Members of the Council are appointed by the President from the administration, faculty, students, alumni and the community. It will have no policy-making powers.

The Technology Coordination Council creates, assesses, and coordinates technical standards, procedures and processes that implement UWG's information technology strategic policies; it coordinates the activities of UWG's information technology groups for the best use of information technology across campus.

Source: 2009-10 Undergraduate Catalog and Statutes-1/16/07

University System of Georgia Institutions

Abraham Baldwin Agricultural College (ABAC)
 Albany State University
 Armstrong Atlantic State University
 Atlanta Metropolitan College
 Augusta State University
 Bainbridge College
 Clayton State University
 College of Coastal Georgia
 Columbus State University
 Dalton State College
 Darton College
 East Georgia College
 Fort Valley State University
 Gainesville State College
 Georgia College & State University
 Georgia Gwinnett College
 Georgia Highlands College
 Georgia Institute of Technology
 Georgia Perimeter College
 Georgia Southern University
 Georgia Southwestern State University
 Georgia State University
 Gordon College
 Kennesaw State University
 Macon State College
 Medical College of Georgia
 Middle Georgia College
 North Georgia College & State University
 Savannah State University
 Southern Polytechnic State University
 South Georgia College
 University of Georgia
 University of West Georgia
 Valdosta State University
 Waycross College
Independent Research Unit:
 Skidaway Institute of Oceanography

University System of Georgia 2009-2010 Board of Regents

Larry R. Ellis, Atlanta	State-at-Large
Larry Walker, Perry	State-at-Large
Robert F. Hatcher, Macon	State-at-Large
<i>Chair*</i>	
Felton Jenkins, Madison	State-at-Large
Donald M. Leebern, Jr., McDonough	State-at-Large
James A. Bishop, Brunswick	First District
Doreen Stiles Poitevint, Bainbridge	Second District
Allan Vigil, Morrow	Third District
Wanda Yancy Rodwell, Stone Mountain	Fourth District
Frederick E. Cooper, Atlanta	Fifth District
Kessel Stelling, Jr., Alpharetta	Sixth District
Richard L. Tucker, Lawrenceville	Seventh District
W. Mansfield Jennings Jr., Hawkinsville	Eighth District
James R. Jolly, Dalton	Ninth District
William NeSmith, Jr., Athens	Tenth District
Willis J. Potts, Jr., Rome	Eleventh District
<i>Vice Chair*</i>	
Benjamin J. Tarbutton, III Sandersville	Twelfth District
Kenneth R. Bernard, Jr., Douglasville	Thirteenth District

University System of Georgia Administrative Personnel

Mr. Erroll B. Davis, Jr.

Ms. Demetra Morgan

Mr. John Fuchko, III

Mr. Michael Foxman

Mr. Scott Woodison

Chancellor

Executive Assistant to the Chancellor

Chief Audit Officer and

Associate Vice Chancellor, Internal Audit (Interim)

Director of Internal Audit

Director of Information Technology Audit

Office of Administrative and Fiscal Affairs

Mr. Rob Watts

Mr. J. Burns Newsome

Ms. Erika Triplett

Ms. Lyndell Robinson

Mr. Daryl Griswold

Ms. Kimberly Ballard-Washington

Mr. Wayne Guthrie

Mr. Tom Scheer

Ms. Dorothy Roberts

Ms. Tina Woodard

Dr. Lamar Veatch

Ms. Shelley C. Nickel

Ms. Linda M. Daniels

Mr. Peter J. Hickey

Ms. Sharon Brittain

Ms. Sandra Neuse

Mr. Marty Nance

Mr. Alan Travis

Ms. Usha Ramachandran

Ms. Sherea Frazer

Mr. David Dickerson

Ms. Vikki Williamson

Mr. Mike McClearn

Ms. Diane Hickey

Chief Operating Officer

Vice Chancellor for Legal Affairs and Secretary to the Board

Executive Assistant for the Board Members Services

Executive Assistant to the Secretary to the Board

Assistant Vice Chancellor, Legal Affairs (Contracts)

Assistant Vice Chancellor, Legal Affairs

Vice Chancellor, Human Resources

Associate Vice Chancellor, Life and Health Benefits

System Benefits Administrator

Assistant Vice Chancellor, Professional Development

Assistant Vice Chancellor, Georgia Public Library Service

Assistant Vice Chancellor, Planning and Implementation

Vice Chancellor, Facilities

Associate Vice Chancellor, Development and Administration

Assistant Vice Chancellor, Design and Construction

Assistant Vice Chancellor, Compliance and Operations

Executive Director, Real Estate Ventures

Director of Planning

Vice Chancellor for Fiscal Affairs

Special Assistant to the Vice Chancellor, Fiscal Affairs

Assistant Budget Director

Assistant Vice Chancellor, Accounting and Reporting

Director, University System Purchasing

Controller

Office of Academic Affairs

Dr. Susan Herbst	Chief Academic Officer and Executive Vice Chancellor
Dr. Daniel W. Rahn, M.D.	Senior Vice Chancellor for Health and Medical Programs and President, Medical College of Georgia
Dr. Melinda Spencer	Chief of Staff, Academic Affairs
Dr. Linda M. Noble	Assistant Vice Chancellor, Faculty Affairs
Dr. Marci Middleton	Assistant Vice Chancellor, Academic Programs
Ms. Tonya Lam	Associate Vice Chancellor, Student Affairs
Dr. Lynne Weisenbach	Vice Chancellor, Educator Preparation and Innovation
Ms. Sheila Jones	Senior Executive Director, P-16 Programs
Dr. Susan Campbell Lounsbury	Assistant Vice Chancellor, Research and Policy Analysis
Dr. Tom Maier	Vice Chancellor, Information and Instructional Technology/CIO
Mr. Stan Gatewood	Chief Information Security Officer
Dr. Kris Biesinger	Associate Vice Chancellor, OIIT Services
Dr. Catherine Finnegan	Director, Assessment and Public Information
Ms. Merryll Penson	Executive Director, Library Services
Dr. Michael Rogers	Director, Instructional Design and Development
Ms. Denise Samples	Executive Director, Resource Management
Ms. Marie Steed	Executive Director, Customer Support
Dr. Brian Finnegan	Executive Director, Innovation Support
Ms. Beverly Norwood	Executive Director, Integration and Deployment Support
Mr. John Scoville	Interim Executive Director, Applications Support
	Executive Director, Infrastructure Services

Office of External Affairs

Mr. Tom Daniel	Senior Vice Chancellor, Office of External Affairs
Ms. Terry Durden	Interim Assistant Vice Chancellor, Office of Economic Development
Ms. Amanda D. Seals	Executive Director, Government Relations
Mr. John Millsaps	Associate Vice Chancellor, Media and Publications
Mr. John Vanchella	Director of Strategic Communications, Media and Publications
Ms. Diane Payne	Director, Publications
(Position Open)	Director, Sponsored Funds

Source: University System of Georgia
www.usg.edu

University of West Georgia Administration

Officers of General Administration

Dr. Beheruz N. Sethna	President
Dr. Sandra Stone	<i>Acting Vice President for Academic Affairs</i>
Mr. James R. Sutherland	<i>Vice President for Business and Finance</i>
Dr. Melanie McClellan	<i>Vice President for Student Services</i>
Dr. Michael Ruffner	<i>Vice President for University Advancement</i>

Academic Officers

Dr. George K. Kieh, Jr.	<i>Dean College of Arts and Sciences</i>
Dr. Faye S. McIntyre	<i>Dean Richards College of Business</i>
Dr. Kim K. Metcalf	<i>Dean College of Education</i>
Dr. Charles W. Clark	<i>Dean Graduate School</i>
Dr. Donald R. Wagner	<i>Dean Honors College and Director Extended Degree Programs</i>
Dr. Kathryn Grams	<i>Dean School of Nursing</i>

Administrative Officers

Dr. Robert S. Johnson	<i>Director Admissions</i>
Mr. Jimmy L. Agan	<i>Director Continuing Education</i>
Ms. Kimberly Jordan	<i>Director Financial Aid</i>
Ms. Kathy Kral	<i>Chief Information Officer</i>
Dr. Ebenezer F. Kolajo	<i>Director Institutional Research and Planning</i>
Ms. Lorene Flanders	<i>Dean University Libraries</i>
Ms. Donna Haley	<i>Registrar</i>

Instructional Departments and Chairpersons

College of Arts and Sciences

Marjorie Snipes	<i>Anthropology</i>
Kevin Shunn	<i>Art</i>
Henry G. Zot	<i>Biology</i>
Spencer J. Slattery	<i>Chemistry</i>
Adel M. Abunawass	<i>Computer Science</i>
Randy J. Hendricks (Interim)	<i>English and Philosophy</i>
Gary Schmidt, (Interim)	<i>Foreign Languages and Literatures</i>
Curtis Hollabaugh	<i>Geosciences</i>
Howard Goodson (Interim)	<i>History</i>
Pauline Gagnon (Interim)	<i>Mass Communication and Theatre Arts</i>
Bruce Landman	<i>Mathematics</i>
Kevin R. Hibbard	<i>Music</i>
Bobby E. Powell	<i>Physics</i>
Robert M. Schaefer	<i>Political Science and Planning</i>
Donadrian Rice	<i>Psychology</i>
N. Jane McCandless	<i>Sociology and Criminology</i>

College of Education

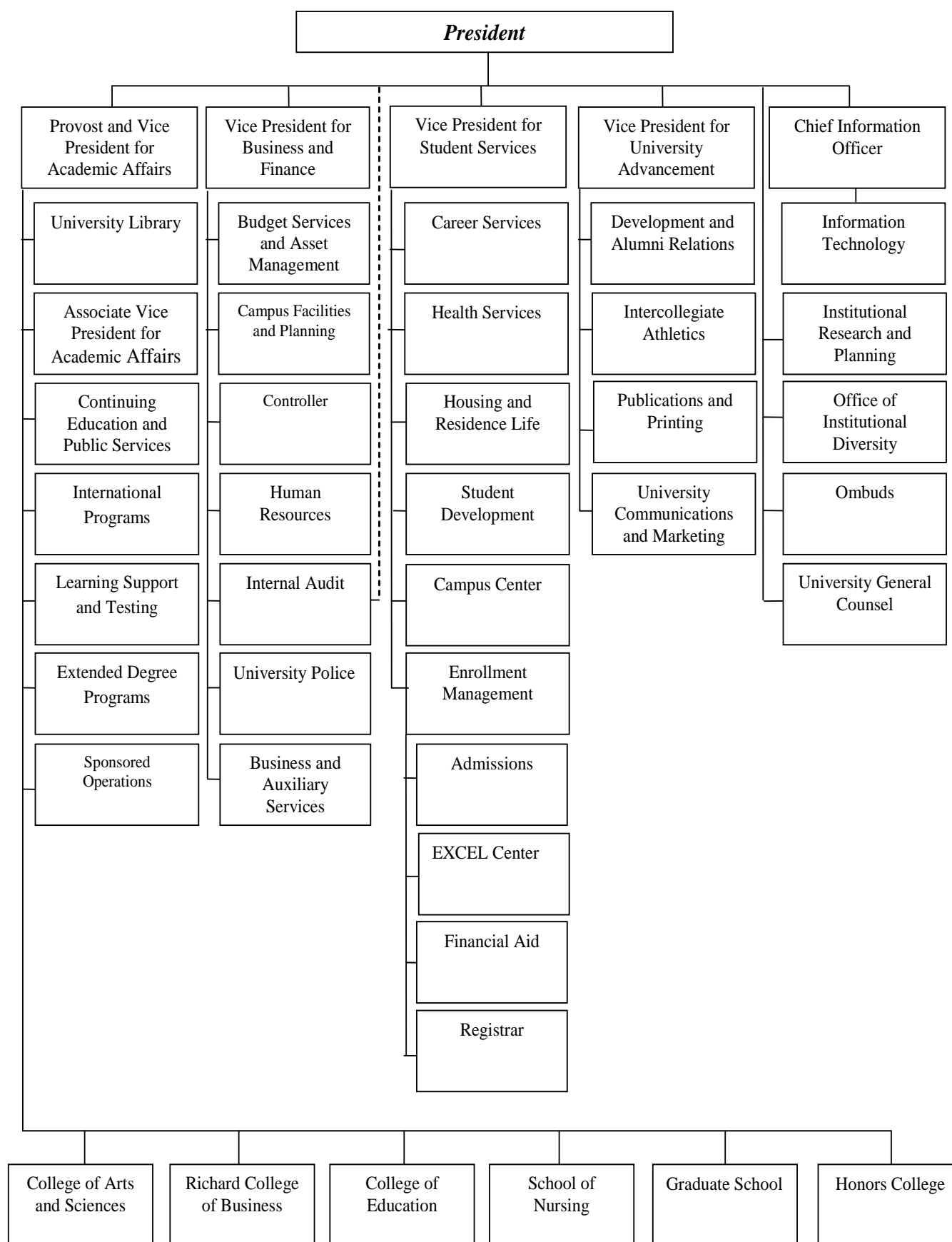
Rebecca Stanard (Interim)	<i>Counseling and Educational Psychology</i>
Donna Harkins	<i>Curriculum and Instruction</i>
Myma Gantner	<i>Educational Leadership and Professional Studies</i>
Deborah Jenkins (Interim)	<i>Health, Physical Education and Sports Studies</i>
Elizabeth Bennett	<i>Media and Instructional Technology</i>
John von Eschenbach (interim)	<i>Special Education and Speech-Language Pathology</i>

Richards College of Business

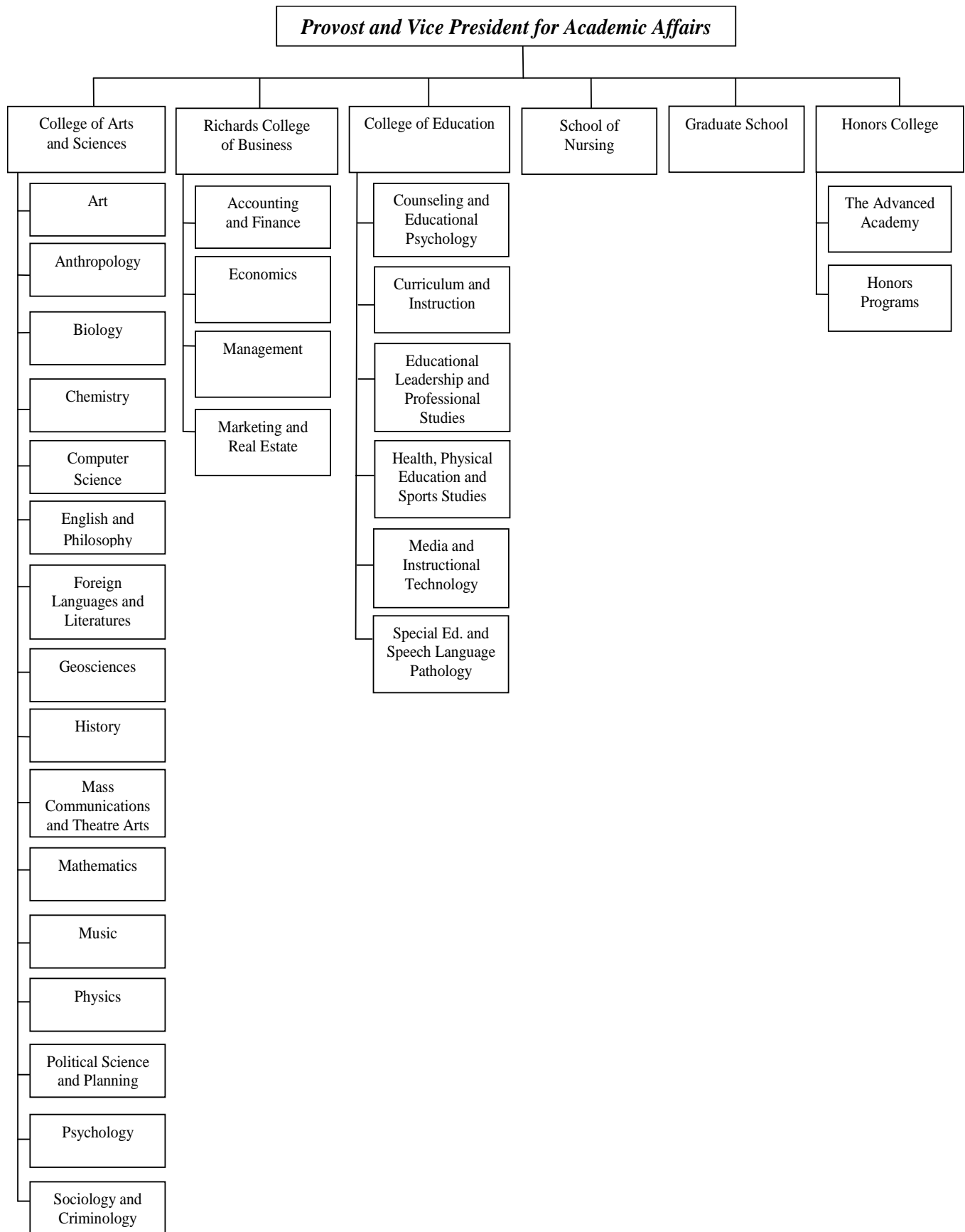
James R. Colley	<i>Accounting and Finance</i>
David J. Boldt	<i>Economics</i>
Thomas C. Gainey	<i>Management</i>
Salil M. Talpade	<i>Marketing and Real Estate</i>

Source: Faculty and Staff Directory 2009-2010

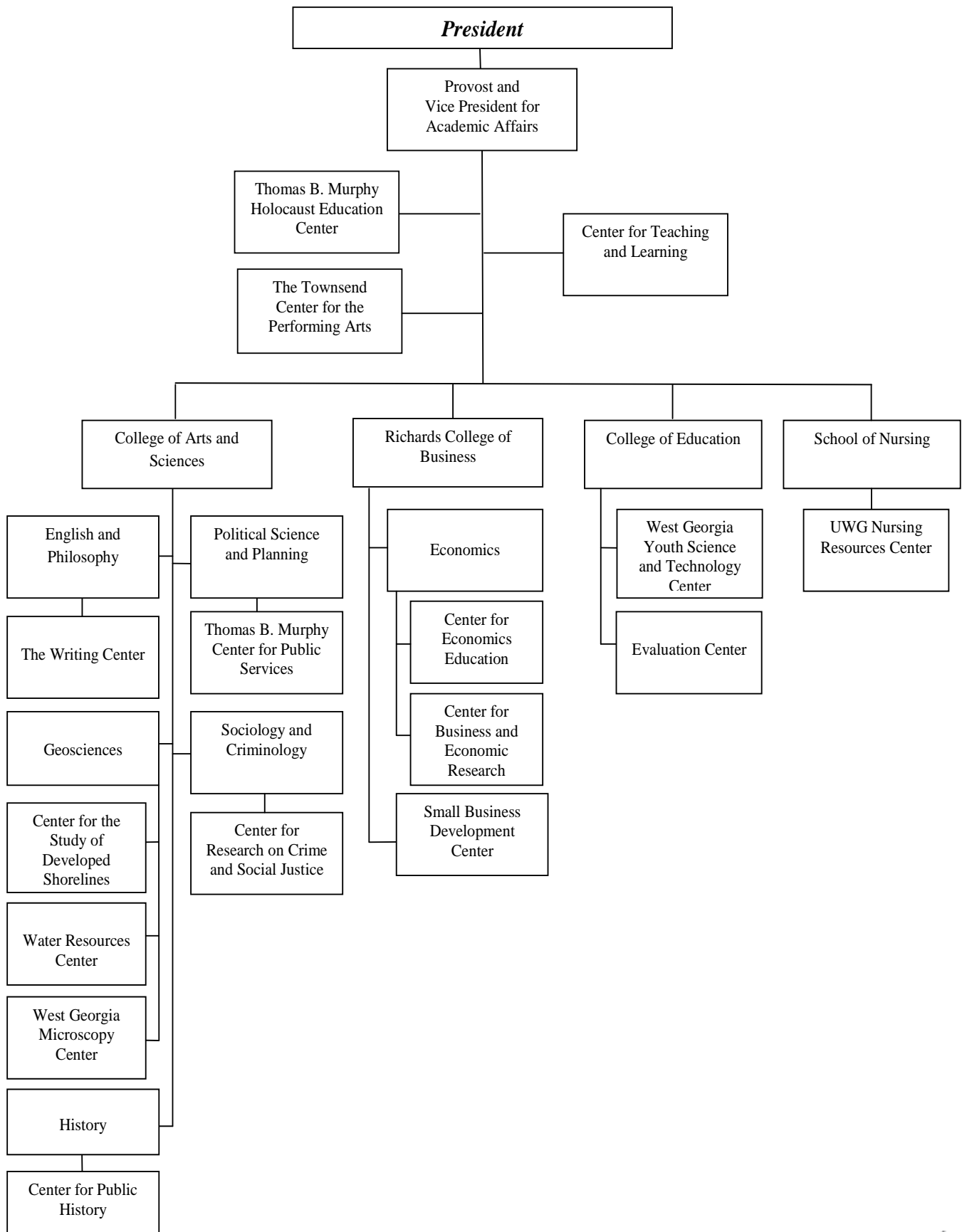
UWG Administration Units



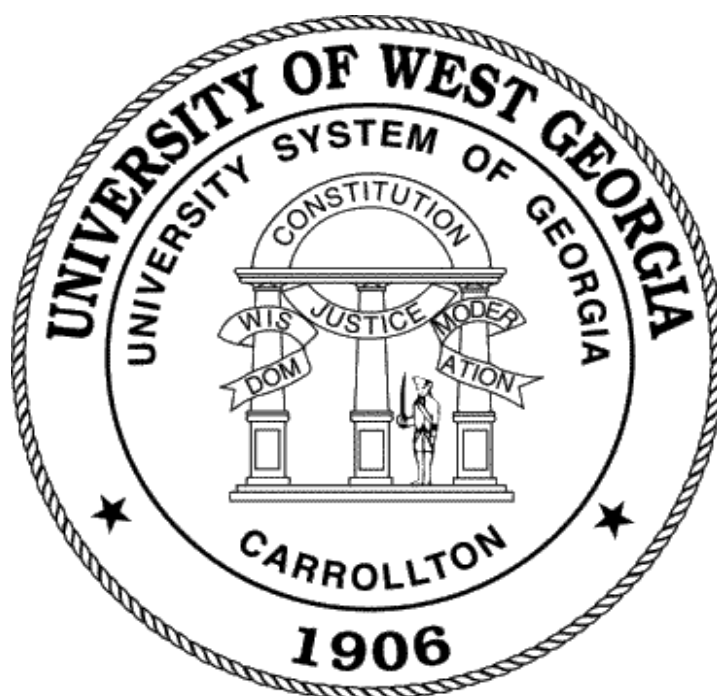
UWG Academic Units



UWG Centers



Enrollment and Credit Hour Production



Detailed Composition of UWG Student Body

Fall 2000-2009

	2000	2001	2002	2003	2004	2005	2006	2007	2008	2009
Classification										
Freshman	2,873	3,127	3,208	3,264	3,316	3,258	3,247	3,424	3,554	3,516
Sophomore	1,423	1,502	1,613	1,662	1,652	1,750	1,812	1,902	2,031	2,117
Junior	1,086	1,200	1,362	1,447	1,548	1,492	1,589	1,581	1,648	1,810
Senior	1,287	1,283	1,340	1,515	1,613	1,698	1,666	1,768	1,867	2,025
Graduate	1,850	1,786	2,012	2,210	1,937	1,808	1,688	1,835	2,022	1,878
Joint Enrollment	92	68	92	107	94	93	113	124	86	109
Learning Support	292	*	*	*	*	*	*	*	*	*
**Others	63	64	48	50	56	55	48	43	44	45
Total Enrollment	8,966	9,030	9,675	10,255	10,216	10,154	10,163	10,677	11,252	11,500
Geographic										
Georgia Residents	8,588	8,654	9,296	9,887	9,858	9,752	9,783	10,270	10,865	11,113
Out-of-state	261	263	275	260	237	272	267	277	254	256
Other Countries	117	113	104	108	121	130	113	130	133	131
Gender (total students)										
Female	5,725	5,757	6,144	6,561	6,446	6,376	6,406	6,700	7,075	7,182
Male	3,241	3,273	3,531	3,694	3,770	3,778	3,757	3,977	4,177	4,318
Ethnicity										
Hispanic/Latino										355
Non-Hispanic										9,529
Ethnicity Unknown/Undeclared										1,616
Race										
African/Black American	1,864	1,910	2,151	2,314	2,367	2,342	2,461	2,707	2,837	2,920
American Indian	20	23	20	24	24	22	22	29	32	44
Asian or Pacific Islander	103	105	114	139	161	155	161	188	192	
Asian										181
Native Hawaiian										7
Caucasian/White	6,820	6,801	7,176	7,505	7,363	7,281	7,136	7,142	7,364	7,059
Hispanic	80	95	101	127	151	171	199	214	272	
Multiracial	79	96	113	146	150	183	184	217	259	84
Other/Undeclared								180	296	1,205
New Students										
Beginning Freshmen	1,488	1,568	1,637	1,740	1,719	1,656	1,709	1,828	1,998	1,916
***Transfers	459	510	576	634	615	577	591	602	609	661
Graduate Students	374	342	405	389	289	288	317	327	387	385
Joint Enrollment	59	44	64	77	67	74	80	90	54	79
Learning Support	200	*	*	*	*	*	*	*	*	*
**Others	32	35	28	26	37	36	31	29	39	44
Total	2,612	2,499	2,710	2,866	2,727	2,631	2,728	2,876	3,087	3,085
Attendance Status										
Full-time Undergraduate	5,861	5,985	6,374	6,741	6,899	6,921	7,002	7,415	7,833	8,126
Full-time Graduate	325	317	372	419	381	422	360	453	468	549
Total	6,186	6,302	6,746	7,160	7,280	7,343	7,362	7,868	8,301	8,675
Part-time Undergraduate	1,255	1,259	1,289	1,304	1,380	1,425	1,473	1,427	1,397	1,496
Part-time Graduate	1,525	1,469	1,640	1,791	1,556	1,386	1,328	1,382	1,554	1,329
Total	2,780	2,728	2,929	3,095	2,936	2,811	2,801	2,809	2,951	2,825

*Learning Support was discontinued by the Board of Regents and are included in others.

**Transients are included in this category.

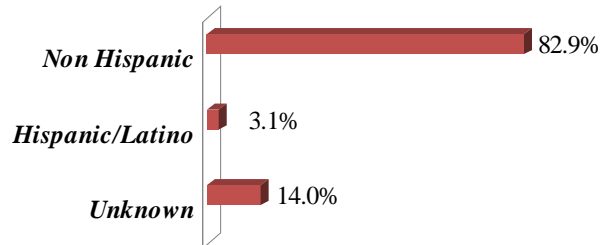
***Category includes transfer freshmen, sophomores, juniors, and seniors.

New Race/Ethnicity IPEDS reporting methods effective Summer 2009.

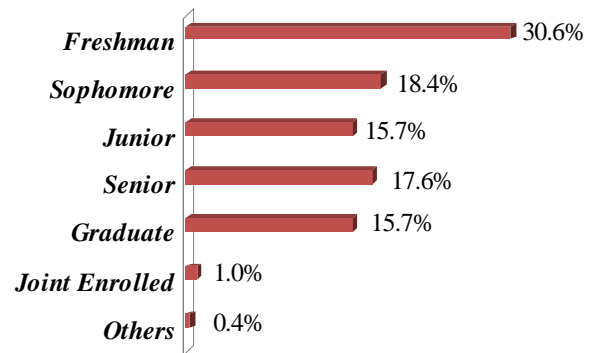
Source: Office of the Registrar and Institutional Research and Planning

Composition of the Student Body Fall 2009

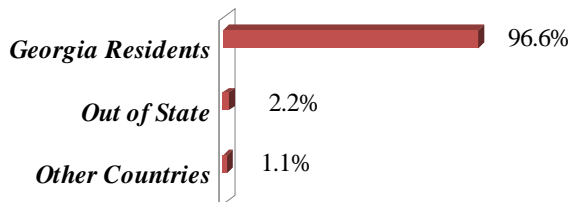
Ethnicity



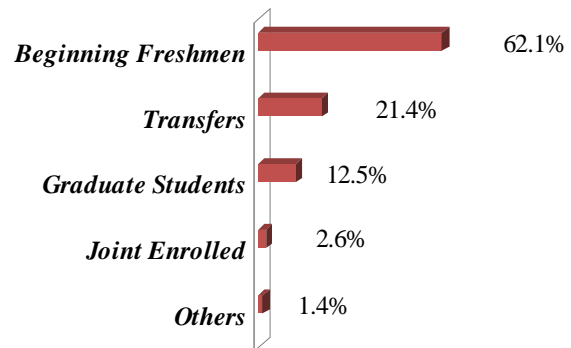
Classification



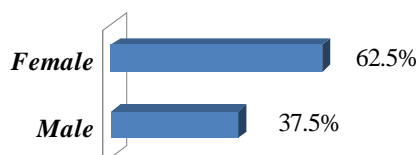
Geographic Origin



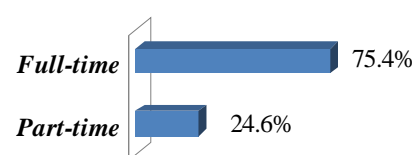
New Students



Gender



Attendance Status



Geographic Origin of Students by Classification

Fall 2009

<i>Service Area Primary Counties</i>	<i>Classification</i>		<i>Total Enrollment</i>
	<i>Undergraduate</i>	<i>Graduate</i>	
Bartow	92	27	119
Butts	25	1	26
Carroll	1,420	279	1,699
Catoosa	37	8	45
Chattooga	33	7	40
Cherokee	147	55	202
Coweta	952	166	1,118
Dade	10	4	14
Dawson	15	2	17
Douglas	900	149	1,049
Fannin	8	0	8
Fayette	447	100	547
Floyd	144	50	194
Forsyth	75	11	86
Gilmer	9	0	9
Gordon	45	21	66
Haralson	301	39	340
Harris	23	7	30
Heard	91	14	105
Henry	217	48	265
Lamar	9	1	10
Meriwether	26	14	40
Monroe	1	2	3
Murray	30	1	31
Muscogee	44	8	52
Newton	95	10	105
Paulding	401	91	492
Pickens	9	5	14
Pike	17	4	21
Polk	105	23	128
Rockdale	90	13	103
Spalding	46	9	55
Talbot	0	0	0
Troup	122	28	150
Upson	18	4	22
Walker	51	14	65
Whitfield	62	6	68
Total	6,117	1,221	7,338

<i>Five County Metro Area</i>	<i>Classification</i>		<i>Total Enrollment</i>
	<i>Undergraduate</i>	<i>Graduate</i>	
Clayton	219	56	275
Cobb	595	179	774
Dekalb	535	64	599
Fulton	501	131	632
Gwinnett	606	46	652
Total	2,456	476	2,932

<i>Other Georgia Counties*</i>	675	82	757
<i>Out of State*</i>	264	78	342
<i>Out of Country</i>	110	21	131
Total	1,049	181	1,230

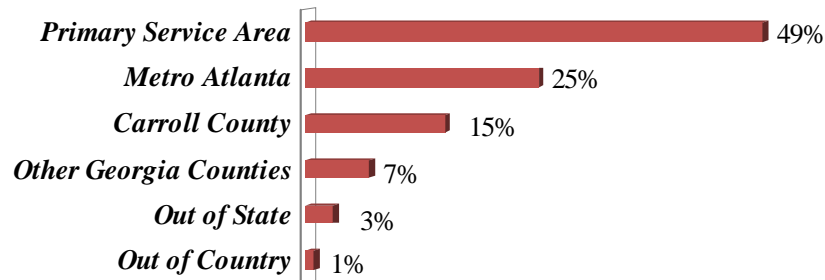
*edited 7/15/2011

Source: Institutional Research and Planning

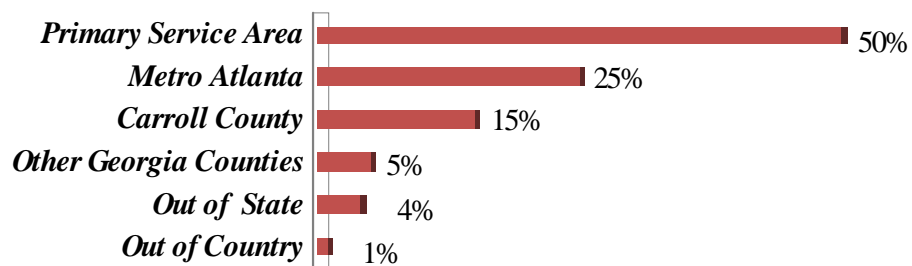
Geographic Origin of Students

Fall 2009

Undergraduate Students*



Graduate Students*



*edited 7/11/2011

UWG Admissions Data

Fall 2000-2009

The Office of Admissions administers the undergraduate admissions policies and procedures of the University, evaluates eligibility of undergraduate applicants for admission and recommends policies governing admission of undergraduates. The Office of Admissions also coordinates

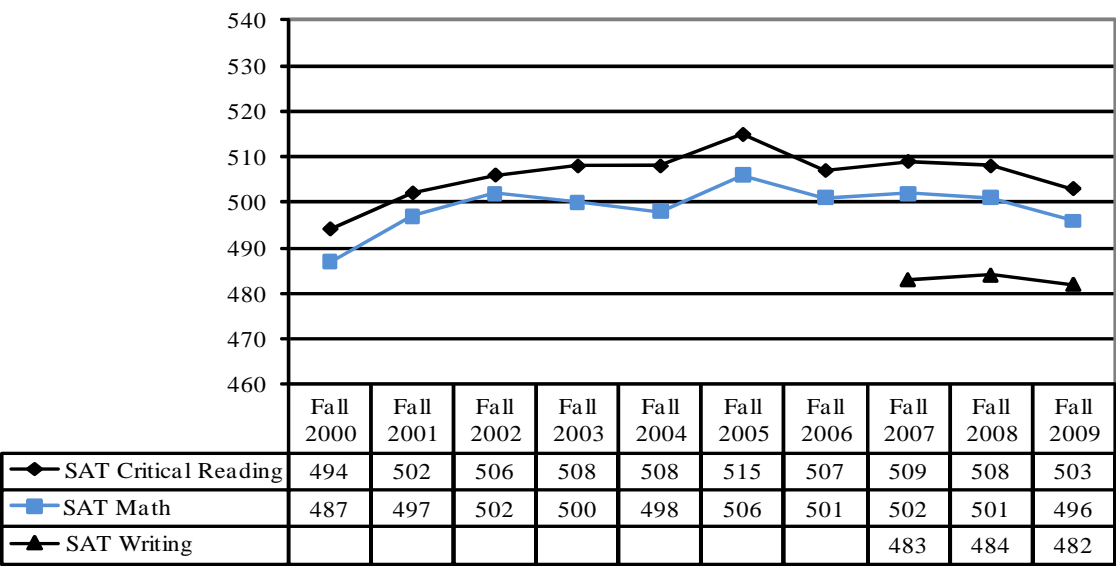
a comprehensive student recruitment program for the University. The Graduate School has its own admissions policies and procedures to admit students into the various degree programs available at West Georgia.

	2000	2001	2002	2003	2004	2005	2006	2007	2008	2009
All Students										
Students Enrolled	8,966	9,030	9,675	10,255	10,216	10,154	10,163	10,677	11,252	11,500
New Students Enrolled	2,612	2,499	2,710	2,866	2,727	2,631	2,728	2,876	3,087	3,085
New Students Enrolled	29%	28%	28%	28%	27%	26%	27%	27%	27%	27%
Graduate Students										
Enrolled	1,850	1,786	2,012	2,210	1,937	1,808	1,688	1,835	2,022	1,878
New Graduate Students Enrolled	374	342	405	389	289	288	317	327	387	385
New Graduate Students Enrolled	20%	19%	20%	18%	15%	16%	19%	18%	19%	21%
Undergraduate Students										
Enrolled	7,116	7,244	7,663	8,045	8,279	8,346	8,475	8,842	9,230	9,622
New Undergraduate Students Enrolled	2,238	2,157	2,305	2,477	2,438	2,343	2,411	2,549	2,700	2,700
New Undergraduate Students Enrolled	31%	30%	30%	31%	29%	28%	28%	29%	29%	28%
All Undergraduates										
Undergraduate Applications Submitted	5,739	5,672	5,692	6,316	6,471	6,676	7,331	7,361	7,571	7,528
Undergraduate Applicants Accepted	2,850	3,424	3,597	3,954	3,940	3,771	3,842	4,004	4,483	4,429
Undergraduate Applicants Enrolled	1,979	2,113	2,241	2,400	2,371	2,269	2,331	2,459	2,646	2,621
Undergraduate Applicants Accepted	50%	60%	63%	63%	61%	56%	52%	54%	59%	59%
Accepted and Enrolled	69%	62%	62%	61%	60%	60%	61%	61%	59%	59%
New Freshman Students										
New Freshman Applicants	4,591	4,453	4,451	4,848	4,953	5,175	5,696	5,803	6,159	5,981
Freshman Applicants Accepted	2,149	2,671	2,830	3,026	3,031	2,859	2,937	3,089	3,589	3,444
New Freshman Students Enrolled	1,488	1,568	1,637	1,740	1,719	1,656	1,709	1,828	1,998	1,916
New Freshman Applicants Accepted	47%	60%	64%	62%	61%	55%	52%	53%	58%	58%
New Freshman Accepted and Enrolled (Yield)	69%	59%	58%	58%	57%	58%	58%	59%	56%	56%
New Transfer Students										
New Transfer Applicants	1,148	1,219	1,241	1,468	1,518	1,501	1,635	1,558	1,412	1,547
Transfer Applicants Accepted	701	753	767	928	909	912	905	915	894	985
New Transfer Students Enrolled	491	545	604	660	652	613	622	631	648	705
New Transfer Applicants Accepted	61%	62%	62%	63%	60%	61%	55%	59%	63%	64%
New Transfer Accepted and Enrolled	70%	72%	79%	71%	72%	67%	69%	69%	72%	72%
Scores										
Mean SAT Critical Reading	494	502	506	508	508	515	507	508	508	503
Mean SAT Math	487	497	502	500	498	506	501	502	501	496
Mean SAT Writing	-	-	-	-	-	-	-	484	483	482
Mean High School Grade Point Average	2.96	2.98	2.98	2.96	2.97	3.01	3.00	3.09	3.03	3.04

Source: Undergraduate Admissions Office, Registrar, and Institutional Research and Planning

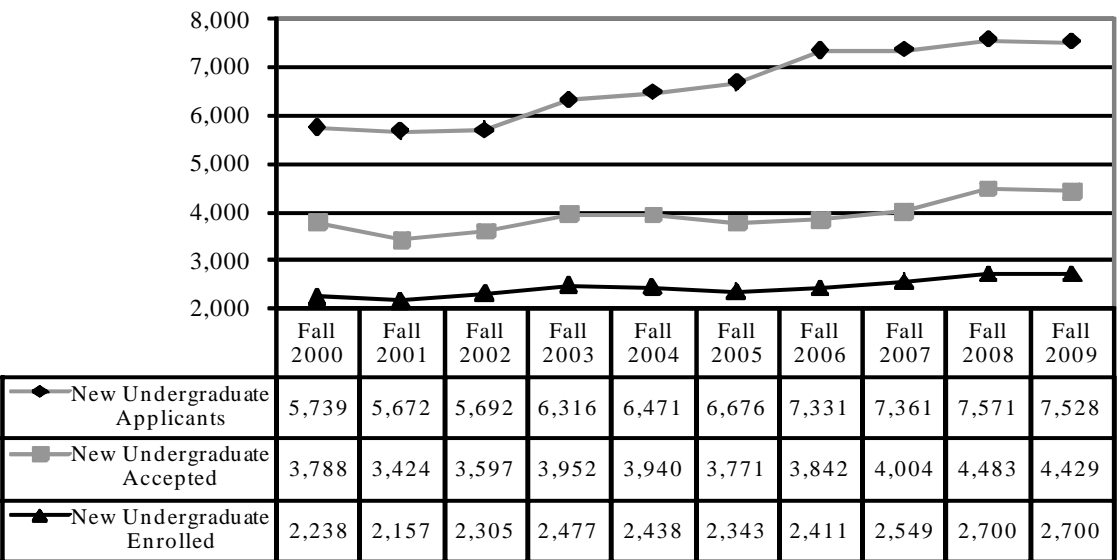
First-time Entering Freshmen

Entering Freshmen Average SAT Scores*



*SAT Scores are from the re-centered scale.
Note: Effective Fall 2007 SAT Verbal became SAT Critical Reading and SAT Writing was added.
 Scores are taken from first-time, full-time freshmen students.

Undergraduate Applicants' Profile



Total FTE for Undergraduate and Graduate Students (FY 2004 - 2010)

<i>Academic Years</i>	<i>Undergraduate</i>	<i>Graduate</i>	<i>Total</i>
2003-2004			
Summer 2003	1,766	1,169	2,935
Fall 2003	7,484	1,381	8,865
Spring 2004	6,901	1,345	8,246
Total	16,151	3,895	20,046
2004-2005			
Summer 2004	1,823	1,048	2,871
Fall 2004	7,691	1,207	8,898
Spring 2005	7,102	1,205	8,307
Total	16,616	3,460	20,076
2005-2006			
Summer 2005	1,822	968	2,790
Fall 2005	7,761	1,146	8,907
Spring 2006	7,055	1,066	8,121
Total	16,638	3,180	19,818
2006-2007			
Summer 2006	1,807	900	2,707
Fall 2006	7,875	1,067	8,942
Spring 2007	7,298	1,072	8,370
Total	16,980	3,039	20,019
2007-2008			
Summer 2007	2,031	945	2,976
Fall 2007	8,260	1,202	9,462
Spring 2008	7,673	1,275	8,948
Total	17,964	3,422	21,386
2008-2009			
Summer 2008	2,282	1,130	3,412
Fall 2008	8,650	1,339	9,989
Spring 2009	8,000	1,274	9,274
Total	18,932	3,743	22,675
2009-2010			
Summer 2009	2,453	1,030	3,483
Fall 2009	9,022	1,287	10,309
Spring 2010	8,412	1,210	9,622
Total	19,887	3,527	23,414

Note: FTE for all years represents the most current definition set by the Board of Regents (Total full-time undergraduate students taking 12 or more hours + total full-time graduate students taking 9 or more hours) + (Total part-time undergraduate credit hours/12 + total part-time graduate credit hours/9)

Source: Institutional Research and Planning

Total Enrollment and Student Credit Hour (SCH) by Level (FY 2004 - 2010)

<i>Academic Years</i>	<i>Lower Level</i>			<i>Upper Level</i>			<i>Graduate Level</i>			<i>Totals</i>	
	<i>Head Count</i>	<i>SCH</i>	<i>Avg. SCH</i>	<i>Head Count</i>	<i>SCH</i>	<i>Avg. SCH</i>	<i>Head Count</i>	<i>SCH</i>	<i>Avg. SCH</i>	<i>SCH</i>	<i>FTE</i>
2003-2004											
Summer 2003	1,318	12,532	9.5	1,926	11,100	5.8	1,816	9,228	5.1	32,860	2,935
Fall 2003	5,071	73,011	14.4	2,974	31,622	10.6	2,210	10,236	4.6	114,869	8,865
Spring 2004	4,297	63,166	14.7	3,266	33,247	10.2	2,117	10,364	4.9	106,777	8,246
Total		148,709			75,969			29,828		254,506	20,046
2004-2005											
Summer 2004	1,374	12,974	9.4	1,984	10,685	5.4	1,638	8,715	5.3	32,374	2,871
Fall 2004	5,105	72,657	14.2	3,174	33,992	10.7	1,937	9,011	4.7	115,660	8,898
Spring 2005	4,337	64,165	14.8	3,399	34,634	10.2	1,881	9,433	5.0	108,232	8,307
Total		149,796			79,311			27,159		256,266	20,076
2005-2006											
Summer 2005	1,331	12,422	9.3	1,989	11,226	5.6	1,480	8,092	5.5	31,740	2,790
Fall 2005	5,146	73,511	14.3	3,200	32,963	10.3	1,808	8,800	4.9	115,274	8,907
Spring 2006	4,282	63,354	14.8	3,412	33,901	9.9	1,682	8,425	5.0	105,680	8,121
Total		149,287			78,090			25,317		252,694	19,818
2006-2007											
Summer 2006	1,389	12,305	8.9	1,975	10,893	5.5	1,374	7,496	5.5	30,694	2,707
Fall 2006	5,207	75,008	14.4	3,268	33,539	10.3	1,688	8,198	4.9	116,745	8,942
Spring 2007	4,437	66,827	15.1	3,501	34,527	9.9	1,661	8,439	5.1	109,793	8,370
Total		154,140			78,959			24,133		257,232	20,019
2007-2008											
Summer 2007	1,581	14,313	9.1	2,177	11,689	5.4	1,444	8,101	5.6	34,103	2,976
Fall 2007	5,490	77,852	14.2	3,352	36,101	10.8	1,835	9,745	5.3	123,698	9,462
Spring 2008	4,693	71,303	15.2	3,598	36,092	10.0	1,917	10,592	5.5	117,987	8,948
Total		163,468			83,882			28,438		275,788	21,386
2008-2009											
Summer 2008	1,741	15,706	9.0	2,362	13,262	5.6	1,695	9,941	5.9	38,909	3,412
Fall 2008	5,714	82,945	14.5	3,516	37,266	10.6	2,022	11,078	5.5	131,289	9,989
Spring 2009	4,865	73,199	15.0	3,755	39,434	10.5	1,910	10,362	5.4	122,995	9,274
Total		171,850			89,962			31,381		293,193	22,675
2009-2010											
Summer 2009	1,766	16,619	9.4	2,567	14,393	5.6	1,567	8,805	5.6	39,817	3,483
Fall 2009	5,784	85,052	14.7	3,838	40,609	10.6	1,878	10,531	5.6	136,192	10,309
Spring 2010	5,000	75,042	15.0	4,078	42,292	10.4	1,748	9,838	5.6	127,172	9,622
Total		176,713			97,294			29,174		303,181	23,414

Note: FTE for all years represents the most current definition set by the Board of Regents (Total full-time undergraduate students taking 12 or more hours + total full-time graduate students taking 9 or more hours) + (Total part-time undergraduate credit hours/12 + total part-time graduate credit hours/9)

Source: Institutional Research and Planning

Student Credit Hour by Level (FY 2004 - 2010) College of Arts and Sciences

<i>Academic Years</i>	<i>Lower Level</i>	<i>Upper Level</i>	<i>Graduate Level</i>	<i>Totals</i>
2003-2004	SCH	SCH	SCH	SCH
Summer 2003	8,707	4,982	1,015	14,704
Fall 2003	61,478	14,304	1,991	77,773
Spring 2004	51,808	15,698	1,911	69,417
Total	121,993	34,984	4,917	161,894
2004-2005				
Summer 2004	9,739	4,935	816	15,490
Fall 2004	62,230	15,316	1,760	79,306
Spring 2005	53,632	16,318	1,832	71,782
Total	125,601	36,569	4,408	166,578
2005-2006				
Summer 2005	9,597	5,399	974	15,970
Fall 2005	63,449	15,688	2,055	81,192
Spring 2006	52,569	17,149	1,848	71,566
Total	125,615	38,236	4,877	168,728
2006-2007				
Summer 2006	9,456	5,679	730	15,865
Fall 2006	64,780	17,124	1,850	83,754
Spring 2007	56,623	18,252	1,871	76,746
Total	130,859	41,055	4,451	176,365
2007-2008				
Summer 2007	11,226	5,811	778	17,815
Fall 2007	67,720	18,830	1,978	88,528
Spring 2008	60,750	18,945	1,913	81,608
Total	139,696	43,586	4,669	187,951
2008-2009				
Summer 2008	12,365	6,040	917	19,322
Fall 2008	72,205	16,432	1,802	90,439
Spring 2009	62,068	17,320	1,899	81,287
Total	146,638	39,792	4,618	191,048
2009-2010				
Summer 2009	13,037	5,222	814	19,073
Fall 2009	73,125	17,195	2,158	92,478
Spring 2010	63,719	18,872	2,052	84,643
Total	149,881	41,289	5,024	196,194

Note: The Board of Regents' new FTE definition is student-centered; therefore college FTE levels can not be calculated.

Source: Institutional Research and Planning

Student Credit Hour by Level (FY 2004 - 2010) Richards College of Business

<i>Academic Years</i>	<i>Lower Level</i>	<i>Upper Level</i>	<i>Graduate Level</i>	<i>Totals</i>
2004-2005				
Summer 2004	1,713	4,638	678	7,029
Fall 2004	4,767	9,033	844	14,644
Spring 2005	4,980	8,999	857	14,836
Total	11,460	22,670	2,379	36,509
2005-2006				
Summer 2005	1,419	4,955	680	7,054
Fall 2005	4,617	8,712	750	14,079
Spring 2006	5,043	8,413	682	14,138
Total	11,079	22,080	2,112	35,271
2006-2007				
Summer 2006	1,359	4,435	538	6,332
Fall 2006	4,725	8,237	616	13,578
Spring 2007	4,737	8,596	699	14,032
Total	10,821	21,268	1,853	33,942
2007-2008				
Summer 2007	1,632	4,743	643	7,018
Fall 2007	4,827	8,723	785	14,335
Spring 2008	5,205	8,989	1,130	15,324
Total	11,664	22,455	2,558	36,677
2008-2009				
Summer 2008	1,886	5,919	819	8,624
Fall 2008	5,615	9,272	1,237	16,124
Spring 2009	5,422	9,982	1,478	16,882
Total	12,923	25,173	3,534	41,630
2008-2009				
Summer 2008	1,886	5,919	819	8,624
Fall 2008	5,615	9,272	1,237	16,124
Spring 2009	5,422	9,982	1,478	16,882
Total	12,923	25,173	3,534	41,630
2009-2010				
Summer 2009	1,526	6,148	1,035	8,709
Fall 2009	5,470	10,420	1,317	17,207
Spring 2010	5,418	10,350	1,390	17,158
Total	12,414	26,918	3,742	43,074

Note: The Board of Regents' new FTE definition is student-centered; therefore college FTE levels can not be calculated.

Source: Institutional Research and Planning

Student Credit Hour by Level (FY 2004 - 2010) College of Education

<i>Academic Years</i>	<i>Lower Level</i>	<i>Upper Level</i>	<i>Graduate Level</i>	<i>Totals</i>
2003-2004	SCH	SCH	SCH	SCH
Summer 2003	1,485	1,211	7,319	10,015
Fall 2003	4,020	8,617	7,410	20,047
Spring 2004	4,062	8,606	7,526	20,194
Total	9,567	18,434	22,255	50,256
2004-2005				
Summer 2004	1,310	1,112	7,221	9,643
Fall 2004	3,842	9,643	6,407	19,892
Spring 2005	3,706	9,317	6,744	19,767
Total	8,858	20,072	20,372	49,302
2005-2006				
Summer 2005	1,298	872	6,438	8,608
Fall 2005	3,875	8,563	5,995	18,433
Spring 2006	3,941	8,339	5,895	18,175
Total	9,114	17,774	18,328	45,216
2006-2007				
Summer 2006	1,052	779	6,228	8,059
Fall 2006	3,989	8,178	5,732	17,899
Spring 2007	3,942	7,679	5,869	17,490
Total	8,983	16,636	17,829	43,448
2007-2008				
Summer 2007	1,095	1,135	6,680	8,910
Fall 2007	3,698	8,548	6,982	19,228
Spring 2008	3,720	8,158	7,549	19,427
Total	8,513	17,841	21,211	47,565
2008-2009				
Summer 2008	1,299	1,303	8,205	10,807
Fall 2008	3,811	8,810	7,822	20,443
Spring 2009	4,140	9,403	6,820	20,363
Total	9,250	19,516	22,847	51,613
2009-2010				
Summer 2009	1,618	1,703	6,948	10,269
Fall 2009	3,967	10,051	6,811	20,829
Spring 2010	4,041	9,902	6,231	20,174
Total	9,626	21,656	19,990	51,272

Note: The Board of Regents' new FTE definition is student-centered; therefore college FTE levels can not be calculated.

Source: Institutional Research and Planning

Student Credit Hour by Level (FY 2004 - 2010) School of Nursing

<i>Academic Years</i>	<i>Lower Level</i>	<i>Upper Level</i>	<i>Graduate Level</i>	<i>Totals</i>
2008-2009	SCH	SCH	SCH	SCH
Summer 2008				0
Fall 2008	0	2,752	217	2,969
Spring 2009	0	2,728	165	2,893
<i>Total</i>	0	5,480	382	5,862
2009-2010				
Summer 2009	0	1,320	8	1,328
Fall 2009	336	2,943	245	3,524
Spring 2010	0	3,168	165	3,333
<i>Total</i>	336	7,431	418	8,185

The School of Nursing was created Fall 2008.

Nursing was included in the College of Arts and Sciences prior to Fall 2008.

Note: The Board of Regents' new FTE definition is student-centered; therefore college FTE levels can not be calculated.

Source: Institutional Research and Planning

Student Credit Hour by Level (FY 2004 - 2010) Newnan Center

<i>Academic Years</i>	<i>Lower Level</i>	<i>Upper Level</i>	<i>Graduate Level</i>	<i>Totals</i>
2003-2004	SCH	SCH	SCH	SCH
Summer 2003	0	0	1,413	1,413
Fall 2003	774	0	1,374	2,148
Spring 2004	741	21	1,104	1,866
Total	1,515	21	3,891	5,427
2004-2005				
Summer 2004	0	0	1,209	1,209
Fall 2004	852	0	998	1,850
Spring 2005	841	0	1,276	2,117
Total	1,693	0	3,483	5,176
2005-2006				
Summer 2005	87	90	1,254	1,431
Fall 2005	771	145	1,080	1,996
Spring 2006	693	232	1,068	1,993
Total	1,551	467	3,402	5,420
2006-2007				
Summer 2006	126	342	1,473	1,941
Fall 2006	768	358	906	2,032
Spring 2007	834	596	882	2,312
Total	1,728	1,296	3,261	6,285
2007-2008				
Summer 2007	132	462	987	1,581
Fall 2007	858	678	1,095	2,631
Spring 2008	863	716	1,293	2,872
Total	1,853	1,856	3,375	7,084
2008-2009				
Summer 2008	276	642	1,452	2,370
Fall 2008	1,038	1,227	1,719	3,984
Spring 2009	765	1,234	1,485	3,484
Total	2,079	3,103	4,656	9,838
2009-2010				
Summer 2009	477	793	849	2,119
Fall 2009	1,077	1,871	573	3,521
Spring 2010	880	1,431	672	2,983
Total	2,434	4,095	2,094	8,623

Note: The Board of Regents' new FTE definition is student-centered; therefore college FTE levels can not be calculated.

Source: Institutional Research and Planning

Student Credit Hour by Level (FY 2004 - 2010) Dalton Center

<i>Academic Years</i>	<i>Upper Level</i>	<i>Graduate Level</i>	<i>Totals</i>
2003-2004	SCH	SCH	SCH
Summer 2003	318	270	588
Fall 2003	1,458	198	1,656
Spring 2004	1,274	183	1,457
Total	3,050	651	3,701
2004-2005			
Summer 2004	217	186	403
Fall 2004	1,600	201	1,801
Spring 2005	1,489	186	1,675
Total	3,306	573	3,879
2005-2006			
Summer 2005	0	108	108
Fall 2005	202	84	286
Spring 2006	227	36	263
Total	429	228	657
2006-2007			
Summer 2006	0	0	0
Fall 2006	142	0	142
Spring 2007	231	0	231
Total	373	0	373
2007-2008			
Summer 2007	0	0	0
Fall 2007	150	0	150
Spring 2008	208	0	208
Total	358	0	358
2008-2009			
Summer 2008	0	0	0
Fall 2008	116	0	116
Spring 2009	237	0	237
Total	353	0	353
2009-2010			
Summer 2009	0	0	0
Fall 2009	200	0	200
Spring 2010	352	0	352
Total	552	0	552

Note: The Board of Regents' new FTE definition is student-centered; therefore college FTE levels can not be calculated.

Source: Institutional Research and Planning

Continuing Education

<https://uwgagenda.westga.edu/>

The Department of Continuing Education and Public Services has emerged as the extension of the traditional on-campus learning process. Non-credit classes are developed and offered to citizens of the University community at convenient locations and with flexible schedules to accommodate a wide variety of participants.

The mission of Continuing Education is to identify and provide non-credit educational opportunities that will enhance the quality of life for local citizens and provide training support to business and industry that will serve as a catalyst for economic development.

The CEU is defined as ten contact hours of participation in a qualified continuing education program. The CEU is recognized as the national standard for measuring an individual's participation in a non-credit program. Programs that qualify for CEU credit are referred to as Category I. Category I activities are designed to enhance occupational skills, and individual permanent records as transcripts are maintained. Courses that are designed primarily for personal enrichment and are social, cultural, or recreational in nature are referred to as Category II courses. No permanent individual records or transcripts are maintained for Category II courses.

Continuing Education Programs Fiscal Years 2000-2009

<i>Fiscal Year</i>	<i>Programs</i>	<i>Participants</i>	<i>CEUs</i>
2000	485	6,408	7,660
2001	540	10,169	11,997
2002	654	15,450	13,046
2003	635	16,048	13,606
2004	488	15,573	8,262
2005	332	4,403	6,478
2006	226	2,589	2,617
2007	266	2,909	2,945
2008	260	2,261	2,689
2009	250	2,816	2,594

Note: Numbers include categories I and II

Source: Continuing Education

Distance and Distributed Education Center

www.westga.edu/~distance/

Distributed Education is an alternative learning environment where faculty draw on appropriate technology to provide instruction outside of the traditional classroom. The distributed model is used in combination with traditional classroom-based courses or to create distance education courses in which most learning occurs independent of time and/or place. In the University System of Georgia, if more than 50 percent of instruction in a course is delivered via distance technologies, it is classified as a Distance Education course.

Through the Distance and Distributed Education Center, the University offers credit classes to students at times and locations outside of the traditional classroom. The University of West Georgia was one of the first institutions in the University System of Georgia to offer full or partial online credit courses, courses which utilize the internet to deliver course materials and assignments, and to facilitate discussion and other appropriate interactions. Distance or Distributed credit courses are currently delivered fully or partially online, through two-way live videoconferencing, or a combination of these technologies.

A primary function of the Distance and Distributed Education Center is to provide support services and training for faculty and students participating in the courses. The Center also provides opportunities for collaboration and research for those who manage and administer the programs throughout the nation through its online academic journal, online non-credit certificate program, and annual conference.

The Distance and Distributed Education Center makes higher education a possibility for students face obstacles to taking undergraduate or graduate courses in a traditional face-to-face classroom setting, and seek to extend the ability to earn credit toward a degree or certification program to those whose life circumstances, such as work, family, or distance, make attending face-to-face traditional classes impractical. Through distance learning, students can attend class whenever and wherever convenient for them with the use of an internet connection. The distance learning diverse student population is spread across the country and internationally.

Source: UWG Undergraduate Catalog 2009-2010

Off-Campus Programs

The Board of Regents approved and established a West Georgia satellite campus in Newnan, Georgia in August 1988. The Center currently offers degree and non-degree programs.

Approved by the Board of Regents in August, 2002, as a cooperative effort between Georgia Highlands College and the University of West Georgia, the External Degree Program services students in the Floyd County area who wish to continue formal education beyond the associate degree.

Off Campus Profile Fall 2009

Off Campus Sites	# of Courses	# of Students (Unduplicated)	Credit Hours		
			Undergraduate	Graduate	Total
Atlanta Area	6	64	0	414	414
Dalton Resident Center	2	25	200	0	200
Middle Georgia	1	15	0	90	90
Newnan Resident Center	53	540	2,948	573	3,512
North Georgia	29	196	1,133	381	1,514

Source: Off-Campus Course Report

Retention and Graduation Rates of Fall First-Time Full-Time Freshman Students

		Entered Fall 2000	Entered Fall 2001	Entered Fall 2002	Entered Fall 2003	Entered Fall 2004	Entered Fall 2005	Entered Fall 2006	Entered Fall 2007	Entered Fall 2008*
First Year	N=	1657	1557	1625	1728	1701	1653	1700	1793	1988
Second Year	Fall	1155	1131	1127	1240	1203	1163	1238	1345	1452
		69.70%	72.64%	69.35%	71.76%	70.72%	70.36%	72.82%	75.01%	73.04%
Third Year	Fall	861	829	813	920	879	921	917	1022	
		51.96%	53.24%	50.03%	53.24%	51.68%	55.72%	53.94%	57.00%	
Fourth Year	Fall	714	721	691	811	751	809	808		
		43.09%	46.31%	42.52%	46.93%	44.15%	48.94%	47.53%		
Fifth Year	Fall	490	519	471	544	524	563			
		29.57%	33.33%	28.98%	31.48%	30.81%	34.06%			
Sixth Year	Fall	192	204	192	225	228				
		11.59%	13.10%	11.82%	13.02%	13.40%				
Graduation	N=	183	184	177	208	198	207			
Rate	4 yr	11.04%	11.82%	10.89%	12.04%	11.64%	12.52%			
	N=	470	469	417	507	474				
	5 yr	28.36%	30.12%	25.66%	29.34%	27.87%				
	N=	566	565	513	627					
	6 yr	34.16%	36.29%	31.57%	36.28%					

Notes: Each entering class includes all entering freshmen enrolled full time whose first time is the fall indicated or the previous summer. Entering cohorts have been revised to eliminate all pre-freshmen students. Graduation rates updated as of the end of Summer 2008.

Source: Department of institutional Research and Planning

Student Financial Aid

Fiscal Years 2006 - 2009

The Office of Financial Aid coordinates financial assistance for nearly seventy-two percent of West Georgia's students. Office staff determines eligibility for aid awarded by the University and record aid received by students from other sources, such as the University of West Georgia Foundation,

corporations, and individuals. The Office coordinates all student financial aid awards and reports all aid awarded to students attending the University to the Board of Regents, federal government, and University officials.

<i>Undergraduate</i>	<i>2005-2006</i>		<i>2006-2007</i>		<i>2007-2008</i>		<i>2008-2009</i>	
	No. of		No. of		No. of		No. of	
	Awards*	Amount	Awards*	Amount	Awards*	Amount	Awards*	Amount
Loans								
Perkins	168	154,942	257	261,666	304	311,502	318	316,000
Ford Direct Stafford	7,434	22,366,618	5,513	17,644,161	5,603	20,979,787	5,953	22,970,184
PLUS	401	1,731,490	442	2,060,829	530	2,193,387	474	2,473,549
UWG Emergency	890	319,334	756	326,992	720	316,759	79	414,881
Private	387	2,206,837	418	2,399,467	624	2,714,131	355	2,239,272
**HOPE Promise	0	0	218	601,650	226	578,250	189	499,500
**Service Cancelable	0	0	66	228,797	68	229,225	0	170,437
<i>Total</i>	<i>9,280</i>	<i>26,779,221</i>	<i>7,670</i>	<i>23,523,562</i>	<i>8,075</i>	<i>27,323,041</i>	<i>7,368</i>	<i>29,083,823</i>
Scholarships								
Institutional	576	1,125,357	548	1,284,289	446	1,262,576	596	1,665,207
Private	325	514,561	352	559,293	375	629,861	373	554,823
State			27	25,650	66	42,501	20	20,100
<i>Total</i>	<i>901</i>	<i>1,639,918</i>	<i>927</i>	<i>1,869,232</i>	<i>887</i>	<i>1,934,938</i>	<i>989</i>	<i>2,240,130</i>
Grants								
Hope	4,453	10,814,832	3,715	10,999,142	3,394	10,545,100	3,519	12,275,313
Pell	2,375	5,876,543	2,577	6,498,192	3,121	8,347,564	3,712	10,177,438
SEOG	328	174,889	214	156,442	202	170,605	297	212,070
Vocational Rehabilitation	117	248,726	150	309,658	139	314,483	155	602,614
LEAP	11	9,750	32	27,487	31	28,947	31	28,529
***ACG			145	100,550	304	212,850	529	398,340
***SMART			37	122,051	35	102,275	40	106,984
<i>Total</i>	<i>7,284</i>	<i>17,124,740</i>	<i>6,870</i>	<i>18,213,522</i>	<i>7,226</i>	<i>19,721,824</i>	<i>8,283</i>	<i>23,801,288</i>
Federal Programs								
College Work Study	276	318,516	254	289,141	276	315,445	285	333,423
Americorps	3	4,284	2	5,628	4	8,275	7	16,497
<i>Total</i>	<i>279</i>	<i>322,800</i>	<i>256</i>	<i>294,769</i>	<i>280</i>	<i>323,720</i>	<i>292</i>	<i>349,920</i>
Grand Total	17,744	45,866,679	15,696	43,901,085	16,402	49,303,523	16,932	55,475,161

* Number of awards may represent duplicated headcount because some students received more than one type of financial aid.

** HOPE Promise and Service Cancelable were included in Stafford Loan amounts in previous years.

*** ACG and SMART grants are new programs that began Fall 2006.

Source: Office of Financial Aid

Student Financial Aid Fiscal Years 2007 - 2009

<i>Graduate</i>	<i>2006-2007</i>		<i>2007-2008</i>		<i>2008-2009</i>	
	No. of		No. of		No. of	
	Awards*	Amount	Awards*	Amount	Awards*	Amount
Loans						
Perkins	3	4,449	5	4,000	8	8,000
Ford Direct Stafford	840	5,387,694	915	6,532,554	1,297	9,002,517
GRAD PLUS (new)					2	8,803
**UWG Emergency					0	0
Private	23	150,389			18	119,891
HOPE Teacher	144	210,170	145	233,250	169	235,392
Loans Total	1,010	5,752,702	1,065	6,769,804	1,494	9,374,603
Scholarships						
Institutional			103	117,258	0	0
Private						
State						
Scholarships Total	0	0	103	117,258	0	0
Grants						
Vocational Rehabilitation						
Grants Total	0	0	0	0	0	0
Federal Programs						
College Work Study	1	2,669	0	0	0	0
Americorps						
Federal Total	1	2,669	0	0	0	0
Grand Total	1,011	5,755,371	1,168	6,887,062	1,494	9,374,603

Students Served

<i>Graduate</i>	<i>2006-2007</i>		<i>2007-2008</i>		<i>2008-2009</i>	
	No. of		No. of		No. of	
	Served***	Amount	Served***	Amount	Served***	Amount
Loans	1,010	5,752,702	1,065	6,769,804	1,494	9,374,603
Hope Scholarships	3,715	0	3,394	0	3,519	0
Other Scholarships	900	0	821	0	969	0
Federal Work Study	1	2,669				
Grand Total	5,626	5,755,371	5,280	6,769,804	5,982	9,374,603

* Number of awards may represent duplicated headcount because some students received more than one type of financial aid.

** Numbers can not be separated.

*** Unduplicated headcount within categories of aid.

Source: Office of Financial Aid

UWG Student Financial Aid Fiscal Years 2000-2009

Fiscal Year	Loans	HOPE Scholarships	Other Scholarships	Grants	Work Study	Total
2000	15,327,023	6,017,467	1,355,763	3,819,548	368,691	26,888,492
2001	15,598,453	8,643,111	1,412,396	4,243,202	380,661	30,277,823
2002	16,292,531	8,869,893	1,405,583	4,824,621	413,632	31,806,260
2003	19,097,179	9,501,835	1,498,035	5,670,785	367,045	36,134,879
2004	22,158,711	10,755,456	1,443,160	6,195,410	338,265	40,891,002
2005	24,438,516	11,368,110	1,617,131	6,184,011	357,340	43,965,108
2006	26,779,221	10,814,832	1,639,918	6,300,158	322,800	45,856,929
2007	23,523,562	10,999,142	1,869,232	7,214,380	294,769	43,901,085
2008	27,323,041	10,545,100	1,934,938	9,176,724	323,720	49,303,523
2009	29,083,823	12,275,313	2,240,130	10,923,361	349,920	54,457,666

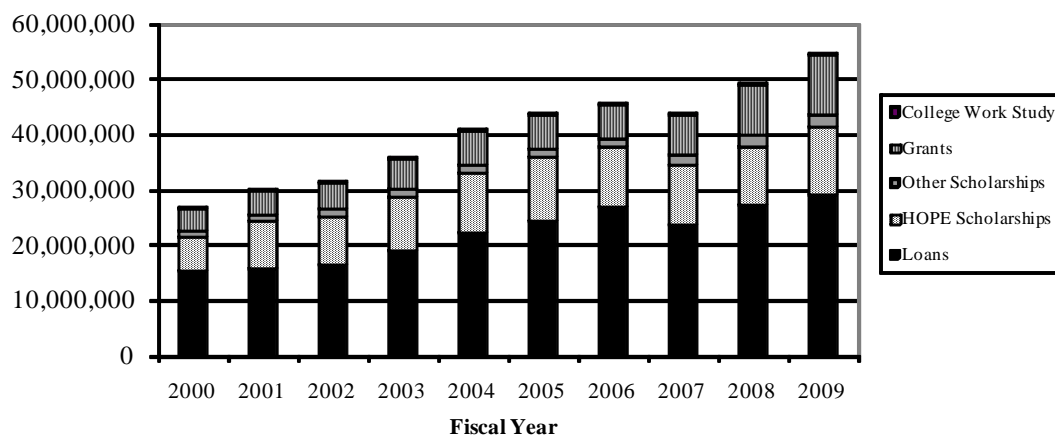
Number of Students Served*						
Fiscal Year	Loans	HOPE Scholarships	Other Scholarships	Grants	Work Study	Total
2000	4,675	3,696	970	1,894	337	11,572
2001	4,883	4,033	910	1,949	395	12,170
2002	6,031	3,965	925	2,016	383	13,320
2003	6,880	3,968	881	2,222	330	14,281
2004	7,253	4,135	833	2,863	328	15,412
2005	6,851	4,618	876	2,443	314	15,102
2006	9,280	4,453	901	2,831	279	17,744
2007	7,670	3,715	927	3,155	256	15,696
2008	8,075	3,394	821	3,832	280	16,402
2009	7,368	3,519	969	4,764	292	16,912

*Unduplicated headcount within categories of aid.

Shaded areas indicate reporting error by Financial Aid. Headcount was duplicated 2000 through 2002.

Source: Financial Aid Office

Student Financial Aid Growth



Source: Office of Financial Aid

Degrees



Degrees and Majors Offered

Fall 2009

Bachelor of Arts

Anthropology
Art
Biology
Chemistry **
English **
French *
Geography
German
Global Studies
History **
International Economic Affairs
Mass Communications
Mathematics
Philosophy
Political Science
Psychology
Spanish *
Theatre

Bachelor of Business Administration

Accounting
Economics
Finance
Management
Management Information Systems
Marketing
Real Estate

Bachelor of Fine Arts

Art
Art Education

Bachelor of Music

Composition
Music Education
Music, Elective Studies in Business
Performance
Performance, Emphasis in Jazz Studies
Performance, Emphasis in Piano Pedagogy

Bachelor of Science

Biology **
Computer Science
Criminology
Earth Science **
Economics **
Geography
Geology

Physics **
Political Science
Sociology

Bachelor of Science in Chemistry

Bachelor of Science in Education

Business Education (7-12)
Early Childhood Education (P-5)
Middle Grades Education (4-8)
Physical Education (P-12)
Speech-Language Pathology
Special Education

Bachelor of Science in Environmental Science

Bachelor of Science in Environmental Studies

Bachelor of Science in Nursing

Bachelor of Science in Recreation

Sport Management

Master of Arts

English
Gerontology
History
Psychology
Sociology

Master of Business Administration

Master of Education

Art Education
Business Education
Early Childhood Education
Educational Leadership
French Language Teacher Education
Media
Middle Grades Education
Physical Education
Professional Counseling
Reading Education
Secondary Education
English
Mathematics
Science
Social Studies
Spanish Language Teacher Education
Special Education
General Curriculum
Adapted Curriculum
Speech-Language Pathology

Degrees and Majors Offered

Master of Music

Music Education
Performance

Master of Professional Accounting

Master of Public Administration

Master of Science

Applied Computer Science
Biology

Master of Science in Mathematics

Master of Science in Nursing

Master of Science in Rural and Small Town Planning

Specialist in Education

Business Education
Early Childhood Education
Educational Leadership
Media
Middle Grades Education
Physical Education
Professional Counseling
Secondary Education
English
Mathematics
Science
Social Studies
Special Education
Curriculum Specialist
Leadership

Doctor of Education

School Improvement
Professional Counseling and Supervision

Doctor of Psychology

Individual, Organizational and Community Transformation

Post-Master's Certificate

Health Systems Leadership
Nursing Education

Non-Degree Initial Certification Programs in Education

Art
Biology
Broad Field Science
Business Education
Chemistry
Early Childhood Education
Earth/Space Science
English
French
History
Mathematics
Media Specialist
Middle Grades Education
Music
Physics
School Counseling
Spanish

Non-Degree Add-On Certification Programs and Endorsements in Education

Educational Leadership
ESOL Endorsement
Gifted Endorsement
Media Specialist
Reading Endorsement
Reading Specialist
School Counseling
Teacher Leader Endorsement
Teacher Support Specialist

Source: UWG Undergraduate Catalog 2009-2010

**Certification obtainable in grades P-12*

***Certification obtainable in grades 7-12*

UWG Degrees Conferred Fiscal Years 2000 – 2009

<i>Fiscal Years</i>	<i>2000</i>	<i>2001</i>	<i>2002</i>	<i>2003</i>	<i>2004</i>	<i>2005</i>	<i>2006</i>	<i>2007</i>	<i>2008</i>	<i>2009</i>
Associate of Science in Nursing	1	-	-	-	-	-	-	-	-	-
Bachelor of Arts										
Anthropology	-	6	2	4	11	4	4	5	9	9
Art	1	1	3	-	2	1	2	2	4	4
Biology	6	2	2	-	-	-	-	-	-	-
Chemistry	2	3	6	6	11	9	9	11	11	7
Chemistry/Secondary Education				-	-	1	3	2	-	2
English	30	29	33	31	19	30	45	31	35	27
French	2	6	2	2	2	3	5	1	2	2
General Studies	-	1	-	-	-	-	-	-	-	-
Geography	-	1	1	2	1	1	-	-	3	1
German					1	-	-	-	1	4
Global Studies	-	-	-	1	1	-	2	1	2	1
History	12	17	16	16	19	17	28	32	33	38
International Economic Affairs	7	6	3	2	8	11	2	3	3	4
Mass Communication	27	28	28	29	37	38	49	40	47	40
Mathematics	1	1	-	-	-	-	1	1	-	-
Philosophy	6	4	5	4	1	5	5	4	4	8
Political Science	10	1	2	4	8	9	4	3	8	5
Psychology	62	65	72	86	78	73	64	88	75	92
Sociology	8	14	9	2	1	1	-	-	-	-
Spanish	4	6	6	3	-	6	6	6	12	6
Speech and Theatre Arts	-	6	5	1	2	-	-	-	-	-
Theatre					2	6	5	2	4	8
<i>Total</i>	178	197	195	193	204	215	234	232	253	258
Bachelor of Business Administration										
Accounting	27	26	26	36	45	35	46	40	38	58
Administrative Systems	7	5	-	-	-	-	-	-	-	-
Technology Support Systems	-	7	4	4	3	4	2	1	-	-
Business Information Systems	36	64	57	54	40	43	-	-	-	-
Economics	-	2	3	2	2	5	8	4	4	2
Finance	31	33	32	39	28	33	33	17	37	37
Management	64	77	72	76	87	86	103	104	88	120
Management Information Systems							31	24	16	14
Marketing	41	65	57	61	87	71	91	84	81	87
Real Estate	17	8	5	4	11	19	16	17	19	14
<i>Total</i>	223	287	256	276	303	296	330	291	283	332
Bachelor of Fine Arts	24	14	22	19	29	36	35	30	26	37
Bachelor of Science in Chemistry	4	8	7	8	4	4	10	11	15	13

Degrees for double majors are reported by first major only.

Corrections made to match the Board of Regents Degrees and Awards Conferred Report.

Degrees Conferred (continued)

<i>Fiscal Years</i>	<i>2000</i>	<i>2001</i>	<i>2002</i>	<i>2003</i>	<i>2004</i>	<i>2005</i>	<i>2006</i>	<i>2007</i>	<i>2008</i>	<i>2009</i>
Bachelor of Science in Education										
Business Education	3	5	3	4	8	3	6	7	5	3
Early Childhood Education	117	127	109	102	129	164	160	160	191	191
Middle Grades Education	32	30	27	17	19	25	29	21	19	37
Physical Education	18	20	17	13	27	27	19	14	5	21
Secondary Science Education	7	5	2	1	-	-	-	-	-	-
Secondary Social Science Education	9	8	12	4	2	3	-	-	-	-
Special Education	33	16	18	20	29	17	22	25	4	-
Speech Pathology	21	13	18	23	12	17	12	17	18	15
<i>Total</i>	<i>240</i>	<i>224</i>	<i>206</i>	<i>184</i>	<i>226</i>	<i>256</i>	<i>248</i>	<i>244</i>	<i>242</i>	<i>267</i>
Bachelor of Music										
Elective Studies in Business-Music			1	-	-	1	-	-	-	-
Music Education	7	4	2	3	5	4	6	6	5	8
Performance	1	3	2	2	4	2	3	1	1	3
Theory and Composition	-	-	1	-	1	-	-	-	-	-
<i>Total</i>	<i>8</i>	<i>7</i>	<i>6</i>	<i>5</i>	<i>10</i>	<i>7</i>	<i>9</i>	<i>7</i>	<i>6</i>	<i>11</i>
Bachelor of Science										
Biology	11	16	30	26	56	41	44	65	70	76
Biology/Secondary Education				-	1	-	2	4	-	1
Computer Science	9	8	18	15	8	14	7	7	11	5
Criminal Justice	23	25	23	18	-	-	-	-	-	-
Criminology	-	-	-	-	38	35	36	28	41	43
Economics	6	6	5	4	12	7	14	7	16	11
Economics-Secondary Education					2	-	-	-	-	1
Environmental Science	-	-	2	-	3	1	1	3	1	-
Environmental Studies	-	-	-	2	-	2	3	3	1	2
Geography	5	1	1	3	3	1	2	2	7	3
Geology	8	8	11	8	2	5	8	5	11	8
Mathematics	3	5	5	7	9	16	7	15	12	13
Physics	3	2	5	7	5	2	4	3	7	6
Physics/Secondary Education				-	-	-	-	-	-	1
Political Science	10	18	13	13	23	27	34	26	31	29
Sociology	33	35	44	34	47	66	49	41	55	60
<i>Total</i>	<i>111</i>	<i>124</i>	<i>157</i>	<i>137</i>	<i>209</i>	<i>217</i>	<i>211</i>	<i>209</i>	<i>263</i>	<i>259</i>
Bachelor of Science in Earth Science	1	-	-	-	-	1	1	2	1	1
Bachelor Science in Nursing	67	67	58	53	51	65	66	69	107	104
Bachelor of Science in Recreation	14	12	24	23	34	39	39	33	25	49
Master of Arts										
English	3	6	9	2	5	10	5	3	6	5
Gerontology	2	9	9	3	3	2	-	1	-	1
History	6	3	6	6	8	8	7	8	6	10
Psychology	12	21	24	24	30	28	25	16	25	14

Degrees for double majors are reported by first major only.

Corrections made to match the Board of Regents Degrees and Awards Conferred Report.

Degrees Conferred (continued)

<i>Fiscal Years</i>	<i>2000</i>	<i>2001</i>	<i>2002</i>	<i>2003</i>	<i>2004</i>	<i>2005</i>	<i>2006</i>	<i>2007</i>	<i>2008</i>	<i>2009</i>
Sociology	-	3	5	3	4	2	4	1	6	3
<i>Total</i>	23	42	53	38	50	50	41	29	43	33
Master of Business Administration	29	38	20	29	42	37	30	23	21	49
Master of Professional Accounting	6	5	10	7	6	5	3	6	4	10
Master of Education										
Administration and Supervision	44	48	54	67	35	84	43	24	10	24
Art Education	2	2	2	1	1	2	5	4	2	3
Business Education	16	13	16	17	18	31	27	28	26	14
Early Childhood Education	58	59	47	54	48	33	41	26	40	59
Foreign Languages Teacher Educ.									2	-
Guidance and Counseling	35	48	29	40	28	55	41	43	40	44
Middle Grades Education	39	26	31	37	25	11	22	18	16	12
Media	22	25	24	29	41	59	48	39	39	40
Physical Education	14	11	9	1	9	9	1	4	4	7
Reading Instruction	5	12	18	6	13	19	12	11	12	7
Secondary Education	37	23	34	22	18	16	14	17	11	13
Special Education	61	45	38	24	23	47	36	23	29	24
Speech Pathology	21	29	31	32	17	5	18	14	11	18
<i>Total</i>	354	341	333	330	276	371	308	251	242	265
Master of Music										
Music Education	2	2	1	2	2	-	3	1	2	3
Performance	-	-	2	3	-	3	-	-	-	-
<i>Total</i>	2	2	3	5	2	3	3	1	2	3
Master of Public Administration	6	4	9	8	12	10	5	8	12	10
Master of Science										
Applied Computer Science					1	4	9	7	6	2
Biology	14	9	5	5	9	4	7	3	6	4
<i>Total</i>	14	9	5	5	10	8	16	10	12	6
Master of Science in Rural and Small Town Planning	-	-	-	1	2	1	4	-	-	1
Master of Science in Nursing					10	5	5	11	10	11
Specialist in Education										
Administration and Supervision	24	12	19	19	55	46	36	48	46	37
Business Education	3	1	-	6	5	5	1	4	4	4
Early Childhood Education	18	15	41	10	10	3	6	7	12	20
Guidance and Counseling	18	21	11	10	12	9	13	9	12	14
Media	23	19	19	12	23	32	34	41	31	45
Middle Grades Education	13	18	20	9	13	6	7	4	6	8
Physical Education	3	5	2	7	1	2	-	2	-	4

Degrees for double majors are reported by first major only.

Corrections made to match the Board of Regents Degrees and Awards Conferred Report.

Degrees Conferred (continued)

<i>Fiscal Years</i>	<i>2000</i>	<i>2001</i>	<i>2002</i>	<i>2003</i>	<i>2004</i>	<i>2005</i>	<i>2006</i>	<i>2007</i>	<i>2008</i>	<i>2009</i>
Secondary Education	6	9	6	10	5	6	8	12	5	5
Special Education	19	18	17	13	15	14	17	11	17	20
<i>Total</i>	<i>127</i>	<i>118</i>	<i>135</i>	<i>96</i>	<i>139</i>	<i>123</i>	<i>122</i>	<i>138</i>	<i>133</i>	<i>157</i>
Post-Baccalaureate Certificate										
Museum Studies								1	5	7
Public History									3	2
Public Management								3		2
<i>Total</i>								<i>4</i>	<i>8</i>	<i>11</i>
Doctorate in Education (Ed.D.)					1	2	8	6	8	8
Total Number of Degrees by Level										
Associate	1	-	-	-	-	-	-	-	-	-
Bachelor	870	940	930	898	1,070	1,136	1,183	1,128	1,221	1,331
Post-Baccalaureate Certificate								4	8	11
Education Specialist	127	118	135	96	139	123	122	138	133	157
Master	434	441	433	423	410	490	415	339	346	388
Doctorate in Education					1	2	8	6	8	8
<i>Total</i>	<i>1,432</i>	<i>1,499</i>	<i>1,498</i>	<i>1,417</i>	<i>1,620</i>	<i>1,751</i>	<i>1,728</i>	<i>1,615</i>	<i>1,716</i>	<i>1,895</i>

Degrees for double majors are reported by first major only.

Corrections made to match the Board of Regents Degrees and Awards Conferred Report.

Source: Department of Institutional Research and Planning

Faculty



Faculty Profile

Institutional Total

Fall 2009

Rank	Teaching Faculty		Administrators		Librarians	Total	Percent
	Full-time	Part-time	General ¹	Academic ²			
Professor	59	15	3	32	3	112	18.9%
Associate Professor	92	4		7	2	105	17.7%
Assistant Professor	153	23		1	4	181	30.5%
Instructor	68	93			5	166	27.9%
Lecturer	30					30	5.0%
College/Department							
College of Arts and Sciences	259	52	1	22		334	56.2%
Richards College of Business	43	10	1	7		61	10.3%
College of Education	80	63	1	8		152	25.6%
Library		2			14	16	2.7%
School of Nursing	20	8		3		31	5.2%
Highest Degree Earned							
Doctorate	267	52	3	39		361	60.8%
Master or Ed. Specialist	135	82		1	14	232	39.0%
Professional Bachelor		1				1	0.2%
Tenure Status							
Tenured	146		2	39	5	192	32.3%
Non-tenured	142	135	1		5	283	47.7%
Tenure-track	114			1	4	119	20.0%
Ethnicity							
African American/Black	27	8		4		39	6.6%
American Indian or Alaskan	1					1	0.2%
Asian or Pacific Islander	29	1	1	1		32	5.4%
Hispanic	9					9	1.5%
Multi-racial			1			1	0.2%
Caucasian/White	336	126	1	35	14	512	86.1%
Gender							
Female	208	97	1	16	10	332	55.9%
Male	194	38	2	24	4	262	44.1%
Total Faculty							
	402	135	3	40	14	594	100.0%

¹General Administrators include the President, Vice President for Academic Affairs, and Associate Vice President for Academic Affairs.

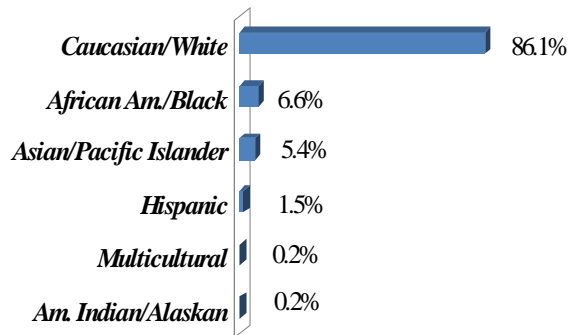
²Academic Administrators include Deans, Associate Deans, Department Chairs, and Academic Directors.

Note: Limited term faculty are included in the full-time faculty category.

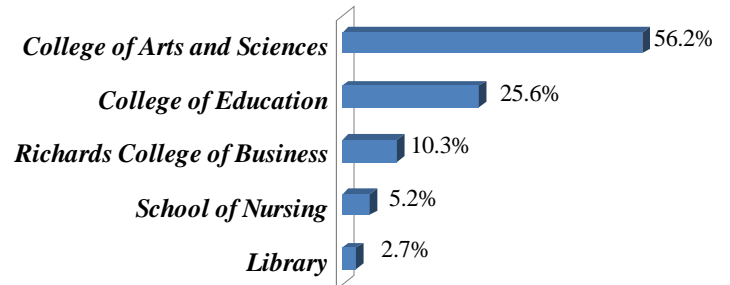
Source: Division of Academic Affairs

Composition of Faculty Fall 2009

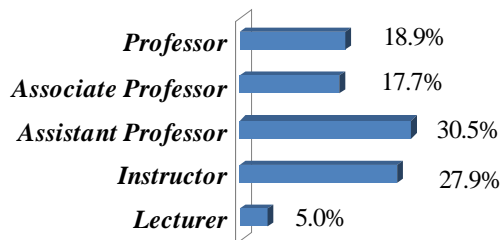
Ethnicity



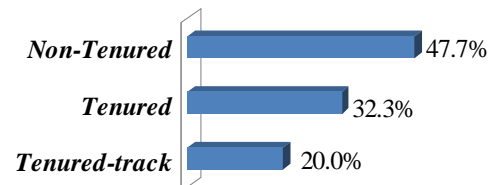
College/School



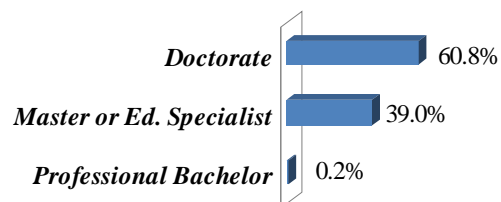
Rank



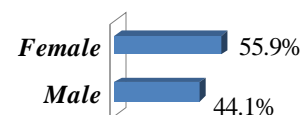
Tenure Status



Highest Degree Earned



Gender



Faculty Profile

College of Arts and Sciences

Fall 2009

<i>Rank</i>	<i>Teaching Faculty</i>		<i>Administrators</i>		<i>Total</i>	<i>Percent</i>
	<i>Full-time</i>	<i>Part-time</i>	<i>General ¹</i>	<i>Academic ²</i>		
Professor	36	3	1	19	59	17.7%
Associate Professor	63			3	66	19.8%
Assistant Professor	94				94	28.1%
Instructor	47	49			96	28.7%
Lecturer	19				19	5.7%
<i>Highest Degree Earned</i>						
Doctorate	165	10	1	21	197	59.0%
Master or Ed. Specialist	94	42		1	137	41.0%
Professional Bachelor					0	0.0%
<i>Tenure Status</i>						
Tenured	94		1	21	116	34.7%
Non-tenured	90	52			142	42.5%
Tenure-track	75			1	76	22.8%
<i>Ethnicity</i>						
African American/Black	10	4		4	18	5.4%
American Indian or Alaskan					0	0.0%
Asian or Pacific Islander	20	1			21	6.3%
Hispanic	7				7	2.1%
Caucasian/White	222	47	1	18	288	86.2%
<i>Gender</i>						
Female	116	32	1	4	153	45.8%
Male	143	20		18	181	54.2%
<i>Total Faculty</i>						
	259	52	1	22	334	100.0%

¹General Administrators include the President, Vice President for Academic Affairs, and Associate Vice President for Academic Affairs.

²Academic Administrators include Deans, Associate Deans, Department Chairs, and Academic Directors.

Note: Limited term faculty are included in the full-time faculty category.

Source: Division of Academic Affairs

Faculty Profile

Richards College of Business

Fall 2009

Rank	Teaching Faculty		Administrators		Total	Percent
	Full-time	Part-time	General ¹	Academic ²		
Professor	13	4	1	6	24	39.3%
Associate Professor	7			1	8	13.1%
Assistant Professor	9				9	14.8%
Instructor	6	6			12	19.7%
Lecturer	8				8	13.1%
Highest Degree Earned						
Doctorate	30	6	1	7	44	72.1%
Master or Ed. Specialist	13	4			17	27.9%
Professional Bachelor					0	0.0%
Tenure Status						
Tenured	20			7	27	44.2%
Non-tenured	14	10	1		25	41.0%
Tenure-Track	9				9	14.8%
Ethnicity						
African American/Black	2				2	3.3%
American Indian or Alaskan					0	0.0%
Asian or Pacific Islander	5		1	1	7	11.5%
Hispanic	2				2	3.3%
Caucasian/White	34	10		6	50	81.9%
Gender						
Female	17	4		2	23	37.7%
Male	26	6	1	5	38	62.3%
Total Faculty						
	43	10	1	7	61	100.0%

¹General Administrators include the President, Vice President for Academic Affairs, and Associate Vice President for Academic Affairs.

²Academic Administrators include Deans, Associate Deans, Department Chairs, and Academic Directors.

Note: Limited term faculty are included in the full-time faculty category.

Source: Division of Academic Affairs

Faculty Profile

College of Education

Fall 2009

Rank	Teaching Faculty		Administrators		Total	Percent
	Full-time	Part-time	General ¹	Academic ²		
Professor	9	5	1	4	19	12.5%
Associate Professor	20	3		3	26	17.1%
Assistant Professor	34	23		1	58	38.1%
Instructor	14	32			46	30.3%
Lecturer	3				3	2.0%
Highest Degree Earned						
Doctorate	67	33	1	8	109	71.7%
Master or Ed. Specialist	13	29			42	27.6%
Professional Bachelor		1			1	0.7%
Tenure Status						
Tenured	29		1	8	38	25.0%
Non-tenured	24	63			87	57.2%
Tenure-Track	27				27	17.8%
Ethnicity						
African American/Black	13	3			16	10.5%
American Indian or Alaskan	1				1	0.7%
Asian or Pacific Islander	4				4	2.6%
Hispanic					0	0.0%
Multi-racial			1		1	0.7%
Caucasian/White	62	60		8	130	85.5%
Gender						
Female	55	51		7	113	74.3%
Male	25	12	1	1	39	25.7%
Total Faculty						
	80	63	1	8	152	100.0%

¹General Administrators include the President, Vice President for Academic Affairs, and Associate Vice President for Academic Affairs.

²Academic Administrators include Deans, Associate Deans, Department Chairs, and Academic Directors.

Note: Limited term faculty are included in the full-time faculty category.

Source: Division of Academic Affairs

Faculty Profile

School of Nursing

Fall 2009

Rank	Teaching Faculty		Administrators		Total	Percent
	Full-time	Part-time	General¹	Academic²		
Professor	1	2		3	6	19.4%
Associate Professor	2	1			3	9.6%
Assistant Professor	16				16	51.6%
Instructor	1	5			6	19.4%
Lecturer					0	0.0%
Highest Degree Earned						
Doctorate	5	3		3	11	35.5%
Master or Ed. Specialist	15	5			20	64.5%
Professional Bachelor					0	0.0%
Tenure Status						
Tenure	3			3	6	19.4%
Not tenure track	14	8			22	71.0%
Tenure - Track	3				3	9.6%
Ethnicity						
African American/Black	2	1			3	9.7%
American Indian or Alaskan					0	0.0%
Asian or Pacific Islander					0	0.0%
Hispanic					0	0.0%
Caucasian/White	18	7		3	28	90.3%
Gender						
Female	20	8		3	31	100.0%
Male					0	0.0%
Total Faculty						
	20	8	0	3	31	100.0%

¹General Administrators include the President, Vice President for Academic Affairs, and Associate Vice President for Academic Affairs.

²Academic Administrators include Deans, Associate Deans, Department Chairs, and Academic Directors.

Note: Limited term faculty are included in the full-time faculty category.

Source: Division of Academic Affairs

Faculty Profile

Irvine S. Ingram Library

Fall 2009

Rank	Teaching Faculty		Administrators		Librarians	Total	Percent
	Full-time	Part-time	General ¹	Academic ²			
Professor		2			3	5	31.3%
Associate Professor					2	2	12.5%
Assistant Professor					4	4	25.0%
Instructor					5	5	31.2%
Lecturer						0	0.0%
Highest Degree Earned							
Doctorate						0	0.0%
Master or Ed. Specialist		2			14	16	100.0%
Professional Bachelor						0	0.0%
Tenure Status							
Tenured					5	5	31.2%
Non-tenured		2			5	7	43.8%
Tenure-track					4	4	25.0%
Ethnicity							
African American/Black						0	0.0%
American Indian or						0	0.0%
Asian or Pacific Islander						0	0.0%
Hispanic						0	0.0%
Caucasian/White		2			14	16	100.0%
Gender							
Female		2			10	12	75.0%
Male					4	4	25.0%
Total Faculty							
		2			14	16	100.0%

¹General Administrators include the President, Vice President for Academic Affairs, and Associate Vice President for Academic Affairs.

²Academic Administrators include Deans, Associate Deans, Department Chairs, and Academic Directors.

Note: Limited term faculty are included in the full-time faculty category.

Source: Division of Academic Affairs

Average Salary by Employee Category Fiscal Years 2003-2010

Faculty	FY2003		FY2004		FY2005		FY2006	
	<i>Number</i>	<i>Average</i>	<i>Number</i>	<i>Average</i>	<i>Number</i>	<i>Average</i>	<i>Number</i>	<i>Average</i>
Professor	54	69,057	50	69,712	53	70,558	56	72,937
Associate Professor	82	54,689	85	52,030	86	52,853	85	55,406
Assistant Professor	129	45,071	141	45,340	151	46,045	142	48,286
Instructor	66	34,392	57	34,320	54	33,878	61	35,477
Lecturer	0	0	12	48,347	18	45,618	20	43,496
All Faculty	331	\$50,802	345	\$49,950	362	\$49,790	364	\$51,120
Staff								
	<i>Number</i>	<i>Average</i>	<i>Number</i>	<i>Average</i>	<i>Number</i>	<i>Average</i>	<i>Number</i>	<i>Average</i>
Administrative	266	44,290	258	47,069	283	42,794	303	44,231
Clerical	161	23,727	159	23,278	146	22,523	139	23,403
Maintenance	111	22,995	149	23,901	130	22,838	139	23,339
All Staff	538	\$30,337	566	\$31,416	559	\$29,385	581	\$30,324
Faculty	FY2007		FY2008		FY2009		FY2010	
	<i>Number</i>	<i>Average</i>	<i>Number</i>	<i>Average</i>	<i>Number</i>	<i>Average</i>	<i>Number</i>	<i>Average</i>
Professor	60	73,374	65	77,201	59	76,830	62	81,923
Associate Professor	82	57,552	82	58,814	86	59,871	94	60,656
Assistant Professor	134	52,320	148	51,659	145	52,511	157	51,791
Instructor	78	35,452	64	37,424	76	38,137	73	38,543
Lecturer	24	44,758	26	44,598	30	44,288	30	44,381
All Faculty	378	\$52,691	385	\$53,939	396	\$54,327	416	\$55,459
Staff								
	<i>Number</i>	<i>Average</i>	<i>Number</i>	<i>Average</i>	<i>Number</i>	<i>Average</i>	<i>Number</i>	<i>Average</i>
Administrative	331	48,861	248	47,512	315	49,139	320	47,636
Clerical	135	23,489	190	26,254	187	26,633	187	26,994
Maintenance	119	23,131	154	26,215	149	26,795	155	27,865
All Staff	585	\$31,827	592	\$35,128	651	\$37,560	662	\$34,165

Note: Faculty totals include all full-time teaching faculty, librarians, and other (f-t) faculty with temporary appointment.

Sources: Division of Academic Affairs and Office of Human Resources

Research



Sponsored Operations

<http://www.westga.edu/oso/index.php>

History

The University of West Georgia established a central office to administer sponsored operations in 1967. University reorganization in 1973 placed responsibility for sponsored operations, grants, contracts, budgeting of funds from sources external to the University, and institutional research in the office of Instructional and Research Services. By 1980, that unit became the Division of Budget and Research Services, reporting to the President of the University. In Fiscal Year 1996, Sponsored Operations was placed under the Vice-President for Academic Affairs.

Services Rendered

The Office of Sponsored Operations aids and supports faculty/staff efforts to attract funds from sources external to the University in support of instructional, research, and service programs. This is accomplished by the Director of Sponsored Operations, who: 1) matches faculty/staff interests and needs with appropriate funding sources, 2) routes requests for proposals (RFP's) to specific faculty/department/program personnel, 3) assists faculty/staff in preparing applications and proposals, 4) coordinates award paperwork, documentation, and reporting, and, 5) provides staff development through grants preparation/administration workshops and seminars. The Office of Sponsored Operations provides the day-to-day services necessary to support all program activities funded from sources external to West Georgia and provides support for the administration of the Faculty Research Grant program funded through the University.

The Director of Sponsored Operations recommends all external contracts, proposals, and grants, and monitors institutional performance under such agreements.

West Georgia attracts grants, gifts, and contracts from federal, state, and local government agencies, corporations, and foundations. This external funding and other revenue enable the University to fulfill its official mission to emphasize creative teaching, encourage research, and promote the development of human resources through educational programs.

Sponsored Operations Goals

The Sponsored Operations Office established the following strategic goals:

1. To promote and support the instructional, research, and public service missions of West Georgia.
2. To encourage University units and individual faculty/staff efforts in seeking funds from external agencies in support of instructional, research, and public service projects.
3. To monitor the Faculty Research Grant Program in compliance with established institutional policies and procedures.
4. To assist principal investigators in efforts to comply with federal and state statutes and University System policy.
5. To seek increased support for University activities from corporate and foundation sources.

Sponsored Operations Assessment As of June 30 of Each Fiscal Year

<i>Fiscal Year</i>	<i>Number of Proposals Submitted</i>	<i>Number of Proposals Funded</i>	<i>Amount Requested</i>	<i>Amount Awarded</i>
2002	57	50	3,420,551	2,922,659
2003	62	43	8,207,448	1,932,727
2004	51	44	4,638,100	2,255,747
2005	66	47	4,649,668	2,056,983
2006	48	38	2,681,068	1,909,258
2007	74	60	4,144,252	2,396,349
2008	74	59	4,027,924	2,097,703
2009	75	46	\$7,411,645	\$2,494,825

Note: Amounts exclude awards for student financial aid.

Source: Office of Sponsored Operations

Directors of Sponsored Projects

Fiscal Year 2009

as of June 30, 2009

College of Arts and Sciences

Dr. Thomas Foster - Anthropology

GDOT Curatorial Services-FY 2009
Department of Transportation State of Georgia
\$38,000

Dr. Thomas Foster - Anthropology

Waring Archaeological Laboratory
UWG Foundation
\$5,000

Dr. Thomas Foster - Anthropology

DNR Curation Agreement-FY 2009
Georgia Department of Natural Resources
\$22,880

Dr. Thomas Foster - Anthropology

Middle Place Plantation
Georgia Department of Natural Resources
\$1,250

Dr. Marjorie Snipes - Anthropology

Antonio J. Waring, Jr. Endowment
UWG Foundation
\$25,090

Dr. Gregory Payne - Biology

MSU: Bollworm Insecticide-Resistance Monitoring
Mississippi State University
\$5,000

Dr. Gregory Payne - Biology

Monitoring for Potential Recessive Resistance in Bollworm
United States Department of Agriculture
\$20,000

Dr. Gregory Payne - Biology

Corn Earworm Collecting Project
Monsanto Company
\$10,000

Dr. Gregory Payne - Biology

Monitoring of Heliothines in Cotton
Georgia Cotton Commission
\$22,000

Dr. David Morgan-Biology

McIntosh Reserve Native Plant Survey/Inventory
Friends of McIntosh
\$1,700

Dr. Megumi Fujita - Chemistry

MRI: Acquisition of a 400 MHz NMR Spectrometer
National Science Foundation
\$344,325

Dr. Sharmistha Basu-Dutt - Chemistry

Dr. Gail Marshall-Curriculum and Instruction
Project Impact
UWG Foundation
\$200,000

Dr. Sharmistha Basu-Dutt - Chemistry

Inquiry & Nature of Science
The University of Georgia/U.S. Department of Education
\$36,505

Dr. Sharmistha Basu-Dutt - Chemistry

High School Chemistry Lab
The University of Georgia/U.S. Department of Education
\$31,055

Dr. Randal L. Kath - Geosciences

Water Quality-City of Villa Rica
City of Villa Rica
\$20,669

Dr. Curtis Hollabaugh - Geosciences

Snake Creek Watershed
Carroll County Water Authority
\$36,669

Dr. Timothy Chowns - Geosciences

St. Catherines Island Field Grant
American Museum of Natural History
\$3,500

Dr. David Bush - Geosciences

Storm Surge Database Project
Western Carolina University
\$35,000

Dr. David Bush - Geosciences

Marine Resources Utilization in Georgia-2008
The University of Georgia/U.S. Department of Commerce
\$13,300

College of Arts and Sciences (Continued)

Dr. Jeong Chang Seong - Geosciences
Development of Geo-spatial Applications
Pixoneer Corporation
\$11,700

Dr. Jeong Chang Seong - Geosciences
GAView
AmericaView, Inc./U.S. Geological Survey
\$23,989

Dr. Ann McCleary - History
Center for Public History
UWG Foundation
\$23,657

Dr. Bruce Landman - Mathematics
Marion Crider Endowment Fund
UWG Foundation
\$68,400

Dr. Bruce Landman - Mathematics
REU Site:Combinatorics, Number & Graph
National Science Foundation
\$146,958

Dr. Joy Black - Mathematics
Training for Technology Integration
The University of Georgia/U.S. Department of Education
\$34,776

Dr. Benjamin deMayo - Physics
NASA
Georgia Institute of Technology
\$37,520

Dr. Bobby Powell - Physics
MSP Program
Georgia Department of Education
\$75,192

Dr. Said Sewell - Political Science and Planning
Center for African American Male Research
Community Foundation of West Georgia
\$11,300

Dr. Larry Schor - Psychology
Disaster Behavioral Health Web Site
Georgia Department of Human Resources
\$28,900

Richards College of Business

Ms. Donna Robinson - Small Business Development Cntr
Small Business Development Center
University of Georgia/US Small Bus. Admn.
\$182,250

Ms. Jennifer Clendenin - Small Business Development Cntr
SBDC Program Funds
UWG Foundation
\$9,849

Dr. Leland Gustafson - Economics
Dr. David Boldt-Economics
Center for Economic Education
Georgia Council on Economic Education
\$3,600

School of Nursing

Dr. Lyn Reilly - Nursing
Advanced Education Nursing Train
Department of Health & Human Services
\$19,468

College of Education

Ms. Rachael Robinson - Curriculum and Instruction

Georgia's Prekindergarten Program-FY07
GA Dept. of Early Care & Learning
\$213,574

Dr. Tamara Ogletree - Curriculum and Instruction

Cherokee Rose Writing Project
National Writing Project Corp./US Dept. of Ed.
\$46,000

Dr. Tamara Ogletree - Curriculum and Instruction

Cherokee Rose Writing Project Income
Carroll County Board of Education
\$2,600

Dr. Roy Forbes - College of Education

GOSA Agreement
Governor's Office of Student Achievement
\$7,966

Dr. Mary Hooper - Educational Leadership

West GA Leadership Academy
Pike & Haralson County Schools
\$33,646

Dr. Kim Metcalf - Evaluation Center

Teaching Fellows-Carroll County Schools FY 2009
Carroll County Board of Education
\$162,410

Dr. Kim Metcalf - Evaluation Center

Teaching Fellows-Carrollton City Schools FY 2009
Carrollton Board of Education
\$73,862

Dr. Kim Metcalf - Evaluation Center

GOSA Agreement
Douglas County Board of Education
\$75,280

Dr. Kim Metcalf - Evaluation Center

PSC Agreement
Georgia Professional Standards Commission
\$100,000

Dr. Kim Metcalf - Evaluation Center

Ferst Foundation for Childhood Literacy Program
Ferst Foundation for Childhood Literacy
\$153,202

Dr. James Harrington - WGYSTC

WGYSTC-FY 08
BOR of The University System of GA
\$62,683

Administrative Units

Ms. Jill Hendricks - Health Services

GOHS & UWG Collaborative Safety Initiative
Governor's Office of Highway Safety
\$14,100

¹ External sources authorized spending for fixed time periods. In certain cases, those periods included only a portion of Fiscal Year 2009.

² In a number of cases, only the portion of the total amount awarded was actually received or spent during Fiscal Year 2009.

Source: Office of Sponsored Operations

Faculty Research Grants

Fiscal Year 2009

In addition to resources acquired from external sources, the University budgets state-allocated funds to assist faculty research efforts through the Faculty Research Grant Program. Established in 1967, the Faculty Research Grant Program provides limited funding for approved faculty research projects.

Each fiscal year, faculty members submit formal proposals to the Learning Resources Committee of the Faculty Senate

requesting University support. Committee members evaluate proposals and make funding recommendations for full Senate review. The Faculty Senate approves proposals and suggests levels of funding to the President, who subsequently allocates funds to the grant recipients.

In compliance with these procedures, the President of the University awarded Faculty Research Grant funds for this Fiscal Year as follows:

College of Arts and Sciences

Thomas Foster - Anthropology

Household Economy of Native Americans at Etowah
\$1,500

Joey Hannaford - Art

Making Meaning: Integrative Uses of Text and Visual Narrative in Analyzing Graphic and Typographic Communication
\$1,500

Perry Kirk - Art

Exhibition Materials for Upcoming Exhibits
\$500

Heidi Banford -Biology

Comparative phylogeography of the Alabama hogsucker, *Hypentelium etowanum* (Catostomidae) and bandfin shiner *Luxilus zonistius* (Cyprinidae) from the Tallapoosa and Chattahoochee Rivers.
\$1,500

William Kenyon - Biology

Strain Variation in the *Serratia Marcescens* Starvation-Stress Response
\$1,000

Loes Kral - Biology

Completion of the Characterization of the Tallapoosa Darter Vertebrate Centromere-specific Histone H3-like Protein Gene
\$1,500

Christopher Tabit - Biology

Population Ecology of Bowfin (*Amia Calva*) in Buffalo Swamp
\$1,500

Anne GaQuere-Parker - Chemistry

Synthesis of Fulleroles From Fullerenes
\$1,100

Megumi Fujita - Chemistry

Exploration of New Carbazole Chemistry
\$1,500

Victoria Geisler - Chemistry

Antioxidant Activity of Rseveratrol and Catechin Analogues
\$1,000

John Hanson - Chemistry

Spectroscopic Studies into the Radiative Damage of Lens Proteins
\$1,500

Farooq Khan - Chemistry

Mass Spectrometry of Large Organic Molecules
\$3,000

Spencer Slattery - Chemistry

“Investigating the Extent that Structural Alterations Influence Electrochemical, Photo-absorbance and Photo-emitting (Fluorescent) behavior of Ru(II) Molecular Systems”
\$1,470

Janet Donohoe - English and Philosophy

Remembering Places: A Phenomenological Investigation
\$1,060

Rebecca Harrison - English and Philosophy

“Beatrice Witte Ravenel: Origins, Agency, and the Cunning Nature of Her Female Aesthetic”
\$1,500

Aleksondra Hulquist - English and Philosophy

The Power and Danger of Giving Way to Publishers
\$1,500

Chad Davidson - English and Philosophy

Gothic Lines: Poetic Inquiries into Bologna and Pantelleria
\$1,500

Patrick Erben - English and Philosophy

“Das Goldland Kalifornien”: German Immigrant Responses to the 1849 California Gold Rush”
\$1,000

Lynn Anderson - Foreign Languages and Literatures

Le Chemin Poétique de Jacques Reda
\$1,500

Gary Schmidt - Foreign Languages and Literatures

Archival Research: The Unpublished Papers of Austrian-Jewish Writer Leo Perutz (Deutsche Nationalbibliothek, Frankfurt am Main
\$1,500

Christopher Berg - Geosciences

Combined Petrographic, Chemical, and Textural Investigation of Garnet Porphyroblasts at Garnet Hill, Georgia: Relating Microstructures and Mineral Chemistries to Mountain Building
\$1,500

Curtis Hollabaugh - Geosciences

Geochemistry of Private Bedrock Wells in the Southern Piedmont of Georgia: Arsenic, Lead, Copper, Bacteria, Nitrate, Fluoride, Sulfur, Iron, and pH
\$1,500

Gary Van Valen - History

The Asamblea Legislativa and the Navajos: New Mexican Legislators and the Bosque Redondo Experiment
\$1,500

Keith Bohannon - History

“A Bold Fighter” Promoted Beyond His Abilities: Confederate General John Bell Hood and the Army of Tennessee
\$800

Michael de Nie - History

The Late-Victorian Press, Egypt, and Radical Islam
\$1,500

Jonathan Goldstein - History

Fresh Perspectives on Chinese-Israeli Relations Since 1992
\$1,500

Charles Lipp - History

Alternative Political Realities in Early Modern Europe
\$1,500

Timothy Schroer - History

The Birth of Codified Racial Segregation of Prisoners of War
\$509

Soo Jung Moon - Mass Communications and Theatre Arts

Antecedents if Agenda-Setting: Party Identification and Media Trust
\$1,500

Javier Hasbun - Physics

Speed of Sound Measurements Versus Gas Temperature, Pressure, and Density
\$750

Stanley Caress - Political Science and Planning

Opinions on Legislative Reform: The Views of U.S. Congressmen
\$810

Gregory Dixon - Political Science and Planning

Cheaters Never Prosper, But They Seem to Live Forever
\$1,000

John Carter - Psychology

A Re-exploration of Positive Interpersonal Emotions
\$795

Jeanette Diaz-Laplante - Psychology

Mental Health Outreach in Rural Haiti: An Exploratory Feasibility Study
\$1,500

Neema Noori - Sociology and Criminology

The Globalization of the American Model of Education
\$1,500

Anja Remshagen - Computer Science

Constrained Quantified Formulas
\$750

College of Arts and Sciences (Continued)

Michelle Scott - Special Education and Speech Language Pathology

The Effects of Multicultural and Differentiation Training on
the Complexity and Multicultural Levels of Lessons
Delivered in an Inclusive Setting
\$880

College of Education

Michelle Scott - Special Education and Speech Language Pathology

The Effects of Multicultural and Differentiation Training
on the Complexity and Multicultural Levels of Lessons
Delivered in an Inclusive Setting
\$880

School of Nursing

Susan Ashford - Nursing

Perceptions of Health Risks and Health Promotion Behaviors
Among Southern Rural Post-menopausal Women
\$1,000

Sponsored Operations Faculty Research Enhancement Awards Fiscal Year 2009

During Fiscal Year 1995, President Beheruz N. Sethna created Sponsored Operations Faculty Research Enhancement Awards to reinvest a portion of indirect cost recovery funds, strengthening the University of West Georgia's research infrastructure.

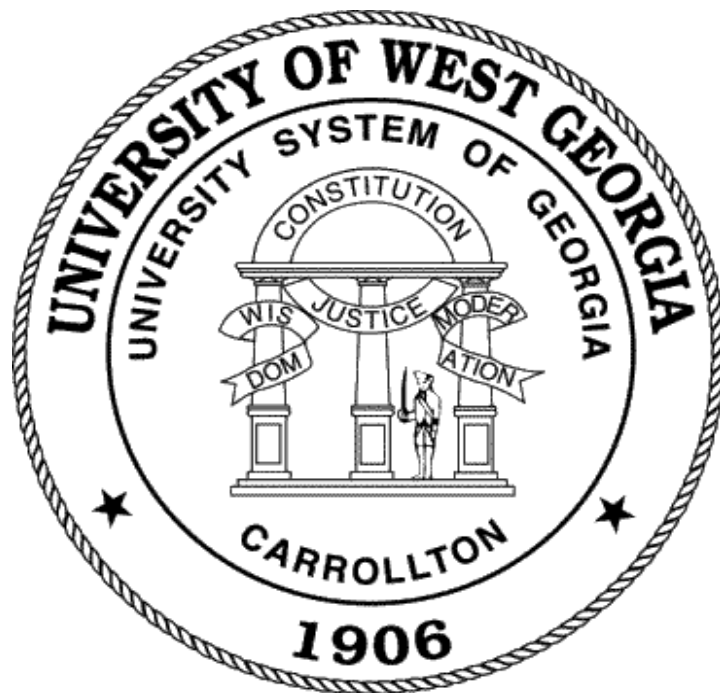
The Sponsored Operations Faculty Research Enhancement Awards for Fiscal Year 2009 are as follows:

<i>Award</i>	<i>Name / Department</i>	<i>Project Title</i>
\$2,300	Dr. Thomas Foster Anthropology	Frontier Economy of the Apalachicola
\$2,500	Dr. Megumi Fujita Chemistry	Synthesis of New Indolocarbazole Derivatives as Ligands for Dinuclear Metallic Complexes and Coordination Polymers
\$2,000	Dr. Farooq Khan Chemistry	Selective Binding of Metal Ions to Antibiotics Valinomycin and beavericin: A Mass Spectrometric Study Using Electrospray Ionization
\$2,800	Dr. Partha Ray Chemistry	Synthesis of N-alkylporines as Models for N-alkylporine-based Folates as Potential Anticancer Agents
\$2,500	Dr. Douglas Stewart Chemistry	"Brilliant" Nanoparticles: Multi-Functional Nanomaterials for Biological Analysis and Manipulation
\$2,610	Dr. Georgina DeWeese History	Dendrochronological Dating of Charcoal Samples from the Etowah Site in Northern Georgia, USA
\$2,000	Dr. Ann McCleary History	Documenting and Presenting Cooperative Extension History in Georgia
\$1,337	Dr. Deborah Bainer Jenkins Curriculum and Instruction	Sport Science

Note: Awarded in 2009 for spending in Fiscal Year 2010

Source: Office of the Sponsored Operations

Financial Information



Budgeting and Assessment Cycle

The University of West Georgia operates under three major budgets: the Resident Instruction Budget, the Auxiliary Enterprises Budget, and the Student Activities Budget. Each serves a distinct purpose.

The Resident Instruction Budget is funded from state appropriations, student tuition and fees, and dedicated funds received from sources external to the University System of Georgia. Resident Instruction Funds support instruction, research, libraries, the computer center and laboratories, Student Services, the administrative and service offices of West Georgia, a portion of the maintenance of the physical plant, and academic scholarships and fellowships.

The Auxiliary Enterprises Budget is self-supporting and is operated on a profit/loss basis. Auxiliary Enterprises generate revenue from residence hall rentals, meal ticket sales, bookstore sales, vending machine sales, student health and athletic fees, parking fees, and parking fines. Auxiliary Enterprises funds support the operation of the residence halls, dining rooms, the University Bookstore, network support, vending machines, bus service, health services, traffic operations, intercollegiate athletics (as of FY 93) and, they provide funds necessary to maintain a portion of the University's physical plant.

The Student Activities Budget is funded by student activities fees. Student Activities funds support various activities including choral and instrumental organizations, art exhibits, debate team, jazz ensemble, Student Activities Council, University game room, Student Government, University publications such as the *West Georgian* and *Eclectic*, and intramural athletics.

In addition to the three budgets, the West Georgia Foundation, Inc., a non-profit corporation dedicated to the advancement of West Georgia, provides funding for scholarships, equipment, and services not funded by state appropriations. The Alumni Association section of the Fact Book supplies additional information about the West Georgia Foundation.

*By State law the period of fiscal operation is the Fiscal Year, beginning July 1 of any year and ending June 30 of the following year.

Reporting

The format for the *Fact Book* shows information as provided in the *University of West Georgia Financial Report*. It accurately reflects the financial position of the University.

All revenue sources and expenses for all fund groups (Resident Instruction, Auxiliary, Student Activities, Sponsored, Continuing Education, Indirect Revenue, and Technology Fees) are combined with as much detail as previously provided. Totals for the fiscal year ending June 30, 2008 have been audited. Totals for the year ending June 30, 2009 are actual revenue and expense amounts and are still subject to changes following the State audit. Totals for the current year are original budgeted totals. Total expenditures do not include capitalized amounts such as equipment over \$5,000 and library collections.

Source: Office of Budget Services

University Revenue by Source

	<i>July 1, 2009 Budgeted</i>	<i>June 30, 2009 Actual</i>	<i>June 30, 2008 Actual</i>
Operating Revenue			
Tuition and Fees	\$ 44,934,594	\$ 44,400,645	\$ 37,360,171
Less: Scholarship allowances	\$ -	\$ (9,196,819)	\$ (7,596,080)
Grants and Contracts			
Federal	\$ -	\$ 1,011,746	\$ 9,986,155
State	\$ -	\$ 548,038	\$ 560,552
Other	\$ -	\$ 1,319,163	\$ 1,308,130
Sales and Services	\$ 1,789,125	\$ 313,538	\$ 394,268
Rents and Royalties		\$ 25,099	\$ 22,644
Auxiliary			
Residence Halls	\$ 11,306,516	\$ 9,694,658	\$ 9,301,004
Bookstore	\$ 3,931,000	\$ 4,363,190	\$ 3,951,557
Food Services	\$ 6,137,220	\$ 6,069,614	\$ 5,351,913
Parking/Transportation	\$ 1,607,934	\$ 1,546,100	\$ 1,299,267
Health Services	\$ 2,069,390	\$ 1,890,979	\$ 1,741,445
Intercollegiate Athletics	\$ 3,280,167	\$ 3,154,240	\$ 2,831,354
Other Organizations	\$ 2,908,431	\$ 1,711,351	\$ 547,163
Other	\$ 773,680	\$ 1,248,986	\$ 1,219,644
Total Operating Revenue	\$ 78,738,057	\$ 68,100,528	\$ 68,279,187
Non-Operating Revenue			
State Appropriations	\$ 48,615,948	\$ 46,454,033	\$ 48,576,377
Federal Stimulus - Stabilization Funds	\$ 2,586,463	\$ 480,039	\$ -
Grants and Contracts	\$ 8,812,705	\$ 11,192,165	\$ -
Gifts		\$ 545,868	\$ 1,531,698
Investment Income	\$ 452,420	\$ 507,899	\$ 1,142,250
Other		\$ 28,450	\$ (327,062)
Total Nonoperating Revenue	\$ 60,467,536	\$ 59,208,454	\$ 50,923,263
Capital Gifts and Grants			
State		\$ 31,816,569	\$ 3,108,908
Other Capital Gifts and Grants	\$ 1,495,820	\$ 6,837,250	\$ -
Total Capital Gifts and Grants	\$ 1,495,820	\$ 38,653,819	\$ 3,108,908
Total Revenues	\$ 140,701,413	\$ 165,962,801	\$ 122,311,358

- Includes all funding sources, internal revenue, special initiative, departmental sales and service, and sponsored operations.
- Grants and contracts does not include federal tuition scholarships.

University Operating Expenses

		<i>July 1, 2009</i>	<i>June 30, 2009</i>
Operating Expenses	Budgeted	Actual	
Salaries:			
Faculty	\$ 28,344,817	\$ 27,671,677	
Staff	30,980,123	31,292,101	
Benefits	19,685,797	16,653,079	
Other Personal Services	2,890,092	333,424	
Travel	1,186,816	853,988	
Scholarships and Fellowships	7,460,396	6,641,504	
Utilities	3,708,975	3,685,238	
Supplies and Other Services	33,510,244	26,004,404	
Depreciation	10,535,794	8,528,722	
Total Operating Expenses	<u>138,303,054</u>	<u>121,664,137</u>	
Non-Operating Expenses			
Interest Expense (Capital Assets)	-	3,094,036	
Total Expenses	<u>\$ 138,303,054</u>	<u>\$ 124,758,173</u>	
EXPENSES BY CLASSIFICATION			
		<i>July 1, 2009</i>	<i>June 30, 2009</i>
Operating Expenses	Budgeted	Actual	
Instruction	\$ 46,199,666	\$ 45,636,252	
College of Arts & Sciences	19,374,541	22,575,010	
Richards College of Business	5,329,391	6,055,325	
College of Education	7,768,170	7,866,084	
School of Nursing	2,407,998	2,426,740	
Other Instruction	<u>13,727,564</u>	<u>6,713,093</u>	
Research	671,567	893,052	
Public Service	201,328	208,509	
Academic Support	15,774,779	15,025,634	
Student Services (Excl Fund 13000)	6,274,369	5,258,196	
Student Activities (Fund 13000)	3,599,913	3,111,351	
Intramural	139,467	114,531	
Social & Entertainment Activities	654,893	579,864	
Student Government	30,114	30,431	
Student Publications	56,343	73,363	
Other Programs/Unassigned ¹	<u>2,719,096</u>	<u>2,313,162</u>	
Institutional Support	18,754,206	11,697,737	
Plant Operations and Maintenance	10,524,531	9,496,723	
Scholarships and Fellowships	7,460,396	5,422,428	
Auxiliary Enterprises	28,842,299	24,914,255	
Student Housing	10,557,391	9,202,614	
Food Services	5,468,374	5,504,950	
Stores and Shops	3,728,981	3,918,551	
Intercollegiate Athletics	3,235,881	3,119,199	
Other Service Units	<u>5,851,672</u>	<u>3,168,941</u>	
Unallocated Expenses			
Total Operating Expenses	<u>138,303,054</u>	<u>121,664,137</u>	
Non-Operating Expenses			
Interest Expense (Capital Assets)	-	3,094,036	
Total Expenses	<u>\$ 138,303,054</u>	<u>\$ 124,758,173</u>	

- Actual amounts for FY09 and FY08 do not include capitalized expenditures, but do include depreciation, Budget amount for FY09 does not include depreciation, minor capital projects, MRR, or GSFIC.
- Includes all fund groups: resident instruction, auxiliary, student activities, continuing education, indirect revenue, and technology fees.

		June 30, 2008
Operating Expenses		Actual
Salaries:		
Faculty		\$ 26,557,060
Staff		28,523,370
Benefits		16,185,043
Other Personal Services		317,413
Travel		1,037,847
Scholarships and Fellowships		6,138,899
Utilities		3,439,610
Supplies and Other Services		26,037,631
Depreciation		7,071,490
Total Operating Expenses		115,308,363
Non-Operating Expenses		
Interest Expense (Capital Assets)		2,934,028
Total Expenses		\$ 118,242,391
EXPENSES BY CLASSIFICATION		
		June 30, 2008
Operating Expenses		Actual
Instruction		\$ 41,902,840
College of Arts & Sciences	23,465,753	
Richards College of Business	5,516,007	
College of Education	8,376,472	
School of Nursing	-	
Other Instruction	4,544,608	
Research		1,001,672
Public Service		187,015
Academic Support		14,099,789
Student Services (Excl Fund 13000)		5,608,173
Student Activities (Fund 13000)		2,093,070
Intramural	138,578	
Social & Entertainment Activities	531,386	
Student Government	30,503	
Student Publications	75,731	
Other Programs/Unassigned ¹	1,316,872	
Institutional Support		11,120,731
Plant Operations and Maintenance		10,303,180
Scholarships and Fellowships		4,916,218
Auxiliary Enterprises		24,075,675
Student Housing	9,552,547	
Food Services	4,728,587	
Stores and Shops	3,735,527	
Intercollegiate Athletics	2,994,659	
Other Service Units	3,064,355	
Unallocated Expenses		-
Total Operating Expenses		115,308,363
Non-Operating Expenses		
Interest Expense (Capital Assets)		2,934,028
Total Expenses		\$ 118,242,391

- Actual amounts for FY09 and FY08 do not include capitalized expenditures, but do include depreciation, Budget amount for FY09 does not include depreciation, minor capital projects, MRR, or GSFIC.
- Includes all fund groups: resident instruction, auxiliary, student activities, continuing education, indirect revenue, and technology fees.

Total Resident Instruction Expenditures Per Full-time Equivalent Student Fiscal Years 2006 – 2010*

<i>Fiscal Year</i>	<i>Resident Instruction Expenditures*</i>	<i>Fall Term FTE Enrollment**</i>	<i>Total Expenditures per FTE Student</i>
2006	\$78,761,239	8,907	\$8,843
2007	\$84,862,070	8,942	\$9,491
2008	\$83,297,659	9,462	\$8,804
2009	\$96,732,567	9,989	\$9,684
2010	\$105,860,842	10,309	\$10,269

*Calculated as total Operating Expenses per annual Financial Report less Auxiliary Services and Student Activities.

**FTE for all years represents the current definition set by the Board of Regents (Total full-time undergraduate students taking 12 or more hours + total full-time graduate students taking 9 or more hours) + (total part-time undergraduate credit hours/12 + total part-time graduate credit hours/9)

Source: Office of Budget Services

Distribution of the Student Dollar Fall 2009



Resident Instruction (Tuition)	0.73
Auxiliary Enterprises (Health, Athletic, and Transportation)	0.14
Campus Center	0.05
Student Activities (Activities Fee)	0.03
Athletic Complex Fee	0.03
Technology Fee	0.02

Source: Office of Budget Services

Condensed Statement of Net Assets

Fiscal Years 2008 – 2009

	<i>FY2009</i>	<i>FY2008</i>
Assets:		
Current Assets	\$ 34,851,548	\$ 28,830,154
Capital Assets, net	164,874,137	123,561,136
Other Assets	2,183,046	2,511,135
Total Assets	201,908,731	154,902,425
Liabilities:		
Current Liabilities	18,648,407	16,446,781
Noncurrent Liabilities	66,698,941	63,098,889
Total Liabilities	85,347,348	79,545,670
Net Assets:		
Invested in Capital Assets, net of debt	98,762,720	61,245,873
Restricted - nonexpendable	-	-
Restricted - expendable	2,430,805	3,088,157
Capital Projects	-	-
Unrestricted	15,367,858	11,022,725
Total Net Assets	\$ 116,561,383	\$ 75,356,755

Assets are cash, investments, receivables, prepaid items, inventories, capital equipment, etc.

Liabilities are accounts payable, deposits from others to the University (i.e. deposits for room rentals, breakage, etc.), and payroll deductions.

Source: Office of Budget Services

West Georgia Foundation, Development and Alumni Relations



University of West Georgia Foundation

The University of West Georgia Foundation, Inc. (Foundation) is a Georgia charitable corporation. It receives and manages private contributions (gifts) made for the benefit of the University of West Georgia. The Foundation has been recognized as an organization exempt from Federal Income Tax under section 501(c)(3) of the Internal Revenue Code, and gifts to the Foundation are deductible as provided for in section 170 of the Internal Revenue Code. The Foundation encourages both restricted (specific purpose) and unrestricted (general use) gifts from donors.

The Foundation's Board of Trustees is composed of business, professional, and community leaders plus officers elected by the Board. The Board establishes and provides oversight of the Foundation's operating financial policies and procedures. In addition, the Foundation is committed to

provide for the integrity of original corpus (principal) dollars plus assure that all fiduciary commitments made to the Foundation's donors are honored for the life of their agreements. The officers and trustees of the Foundation are committed to a policy of full-disclosure.

The Board of Regents of the University System has recognized that gifts and income from endowments that provide for the private support of system institutions are not taken into account when determining the allocation of state funds to the institution. The Board of Regents recognizes that all of its institutions are dependent, in part, on private funding and encourages all of its institutions to seek the support of alumni, friends, corporations, and other private organizations.

Source: Office of Development and Alumni

Foundation Officers and Trustees

2010 Trustees

Mrs. Susan O. Fleck, Chairman
Mr. Howard B. (Rocky) Lipham, III '90, Vice Chairman
Mr. J. Thomas (Tommy) Vance, Secretary
Dr. Michael Ruffner, Acting Executive Director/Treasurer

2009 Trustees

Mr. A. Paul Cadenhead* '44
Mrs. Mary M. Covington '93
Mrs. Cindy Denney '86, '93, '95
Mrs. Susan Plunkett Duncan
Mr. Matthew T. Echols '94
Mr. J. Ted Edgar
Mr. Scott Evans
Dr. Lucille Garmon
Mr. Herb Garrett '68, '71
Mr. James A. Gill*
Mr. Murray D. Gray '55
Mr. Wyche T. (Tee) Green
Mr. Robert G. Harris '86
Mrs. Deirdre Haywood-Rouse
Mr. Cary Ichter '81
Mr. David "Bo" Jackson
Mr. Phillip Kauffman
Mr. Brandall Lovvorn
Mrs. Michelle Morgan '86, '87
Mr. Trent North '91
Dr. Ward B. Pafford* (former UWG President)
Mr. David Parkman '58, '69
Mr. Harry T. Preston '60
Dr. Beheruz N. Sethna (President)
Dr. Greg Slappey
Mr. Floyd W. Smith
Mr. Robert J. (Bob) Stone*
Mr. Tom Upchurch '61
Mr. J. Thomas Vance
Mr. Timothy I. Warren
Mr. Robert E. White '68
Mr. Wyley Gene Winters '86
Mrs. Dana J. Wynn '74

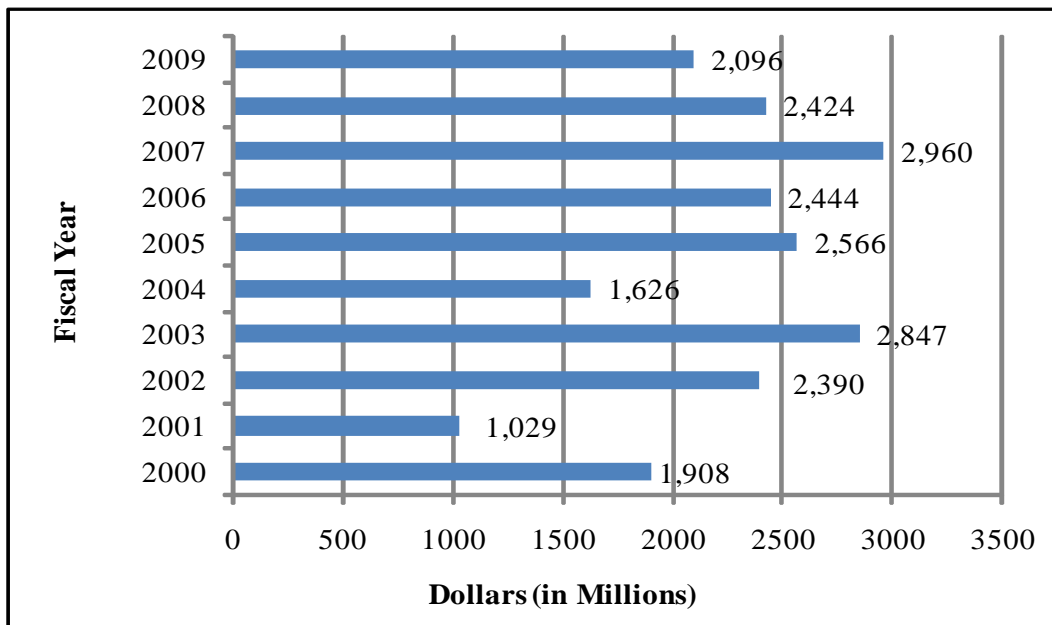
2010 Trustees

Mr. A. Paul Cadenhead* '44
Mrs. Mary M. Covington '93
Mrs. Cindy Denney '86, '93, '95
Mr. Scott Evans
Dr. Lucille Garmon
Mr. Herb Garrett '68, '71
Mr. James A. Gill*
Mr. Murray D. Gray '55
Mr. Wyche T. (Tee) Green
Mrs. Edith (Edie) F. Haney '89
Mr. Robert G. Harris '86
Mrs. Deirdre Haywood-Rouse
Mr. Cary Ichter '81
Mr. David "Bo" Jackson
Mr. Phillip Kauffman*
Mr. Robert (Bob) E. Lovvorn '53
Mrs. Michelle Morgan '86 '87
Mr. James (Jim) M. Naughton
Mr. Trent North '91
Dr. Ward B. Pafford* (former University President)
Mr. David Parkman '58, '69
Mr. Randall Redding
Mr. K. Alexander (Alex) Roush
Dr. Beheruz N. Sethna (President)
Dr. Greg Slappey
Mr. Floyd W. Smith
Mr. Robert J. (Bob) Stone*
Mr. Tom Upchurch '61
Mr. Timothy I. Warren
Mr. Robert E. White '68
Mrs. Dana J. Wynn '74

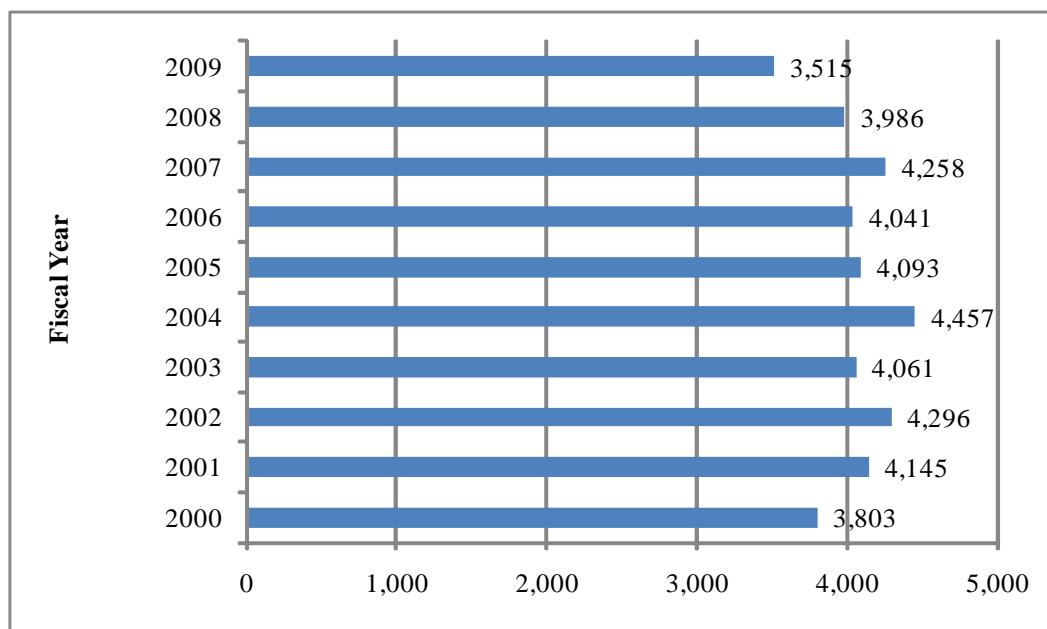
*Lifetime Member

Source: Office of Development and Alumni Relations

Annual Fund Dollars Raised



Number of Annual Fund Donors



Source: West Georgia Foundation, Inc.

Scholarships

General Scholarships

A & M Scholarships
Steve Andre' Rotary Scholarship
Mack C. Baird Scholarship
BAUCM Community Service Scholarship
Emory F. and Rosa W. Boyd Scholarships
James E. Boyd Scholarship
L. Wayne Brown Academic Scholarship
Mrs. Jewell Miles Burson Memorial Scholarships
Business and Professional Women's Club Scholarship
David B. Butler Leadership Scholarship
Elizabeth Plunkett Buttmer Scholarship
Rev. John Caylor Baptist Student Union Endowment
Carrollton Ear, Nose and Throat Scholarship
Carrollton Elementary School Scholarship
Carrollton Parent Teacher Organization Scholarship
Amos and Leona Caswell Scholarship
Betty Reynolds Cobb Scholarship
Brenda Busbin Collins Scholarship
Davenport-Cadenhead Scholarship
Felton Denney Scholarship
Jacob McGavock Dickinson Scholarship
Benny E. Drum Memorial Scholarship
MacGregor Flanders Scholarship
Fraternal Order of Police #35 Scholarship
Georgian Bank Scholarship Endowment Fund
Golden Braves Alumni Scholarship
Julia Barnes Harlin Memorial Scholarship
Hubert and Naomi Holland Scholarship Endowment
I. S. Ingram Scholarship
Irvine Sullivan and Martha Monroe Ingram Scholarship
Ingram Scholarship Fund of the Forties
Collus O. Johnson Scholarship
Col. Frank Jones Kiwanis Scholarship
Terry C. Kapetanacos Memorial Scholarship
Ladies Over 36 Scholarships
Mary Ann Leathers Memorial Scholarship
Thomas R. Luck, Jr. Scholarship
Henry Lumpkin Memorial Scholarship
Dr. John Martin Memorial Scholarship
Everette O. May, Jr.
McCalman Scholarship
Phil McDowell Scholarship Endowment Fund
L. S. Mollette Memorial Scholarship
Morgan Oil Scholarship
Sue Myers Emergency Scholarship Fund

Jennifer Lynn Olson Memorial Scholarship
Elizabeth L. Parker Memorial Scholarship
Chuck Puckett Family Scholarship
Robert P. Steed Memorial Scholarship
Alonzo Thomas, Sr. and Clarence Thomas Memorial Scholarship
Henry Sims Varn Scholarship
Joe M. Ward Memorial Scholarship
West Georgia Foundation Scholarships
West Georgia Life Underwriters Association Scholarship
William J. Wiggins Memorial Scholarship
Sherman and Betty Wilson Memorial Scholarship
Frances Wood Wilson Foundation Scholarship
Wirsing Kiwanis Scholarship Fund
Worthy Family Scholarships

Other West Georgia Scholarships

Charles E. Beard Ingram Library Endowment Fund
Bowdon Sertoma Scholarship
Carrollton Junior Women's Scholarship
Carrollton Lions Club Scholarship
George W. Carver High School Decedents Scholarship
Rev. John Caylor Baptist Student Union
Chi Phi Memorial Scholarship
Lerlie and Millard Copeland Scholarship
George and Bertha Echols Scholarship
Bobby Evans Baptist Student Union Scholarship
Goizueta Foundation Scholarship Fund
Chris Gillespie Memorial Scholarship
Deborah Headrick Memorial Scholarship
Joseph R. Johnson Scholarship Fund
King Packaging Scholarship
Leadershape Scholarship
Mount Zion High School Alumni Scholarship Fund
OFS BrightWave Scholarship
Merlin O. Powers Memorial Scholarship
Roy Richard, Sr. Memorial Scholarships
Sarah Lanctot Rigg Library Endowment
Rotary Club of Carrollton Scholarship
Suzanne Lankford Sullivan Scholarship
Wasdin Scholarship

Scholarships (continued)

Designated Scholarships

College of Arts and Sciences

Shirley C. Boykin Scholarship
Floyd E. Hoskins ROTC Scholarship
John Phillip Kittel Memorial Scholarship
H.O. Lovvorn Scholarship
Sally Pafford Memorial Scholarship
Brooks O. Pittman Science Scholarship
Berta Fields Whatley Scholarship
Fred D. and Gail Brooks White Scholarship

Anthropology

Carole Hill Anthropology Award
Thelma B. Larson Award
Antonio J. Waring Distinguished Professorship
Antonio J. Waring, Jr. Scholarship
John Walton Whatley Scholarship

Art

Betty Andre Memorial Scholarship
Art Endowment Scholarships
Art Scholarship Endowment
Bayeux Scholarship Endowment
Cooper Bell Scholarship
John and Helen Bobick Memorial Scholarship
Marianne Bobick Memorial Scholarship
Dorothy and C.J. Colevins Art Award
Gloria Covert Memorial Art Scholarship
David Dugan, Jr. Scholarship
Joyce Entrekin Harris Scholarship
James and Marie Hingerton Scholarship
P.J. Younglove Hovey Fine Arts Scholarship
Mittie Brooks Johnson Memorial Scholarship
Bessie Curran Kepp Award
Grace Talley Richards Scholarship
Roush Family Scholarship
Helen Hunt Whatley Scholarship

Biology

Bowdon Area Hospital Authority Scholarships
Dr. Roy L Denney Scholarship
Arthur and Shirley Gardner Scholarship
Dr. Thomas A. Hart Scholarship
Morgan M. Hutson Scholarship
Ryan Kauffman Biology Scholarship
Lampton Biological Lecture Series Scholarship
Lois Martin Scholarship Fund
Dr. Jim Mathis Biology Scholarship
T.R. "Cotton" Williamson Memorial Scholarship

Chemistry

Latha Barnes Chemistry Award
Chemistry Department Scholarships
Professor W. Glenn Esslinger Memorial Scholarship
Jack L. Grogan Scholarship
William Lockhart Scholarship
Pope-Grogan Chemistry Award
James A. Wash Scholarship

Computer Science

Computer Science Chair Scholarships
H. Olin Jordan Memorial Scholarship

English and Philosophy

Mary Anne (Sugar) Wilson Goreau DeVillier Memorial Scholarship
Marion L. Fisher Award
Mathews English Scholarship
Kay Magenheimer Award
Dr. James W. Mathews Distinguished Endowed English Scholarship for Graduate Studies
Parkman Family Endowment
Willie Maude Thompson Scholarship
Walker English Fund Scholarships
Burdett and Shirley Wantland Philosophy Scholarship

Foreign Languages and Literature

Charles Beard Study Abroad Award
Marianne Bobick Memorial Scholarship
Jewell Miles Burson Language Award
Sobhi Ghobrial Memorial Scholarship
Cecilia Lee Scholarship
Dr. Nigel E. Smith Award

Scholarships (continued)

Geosciences

Geology Scholarships
John G. Chambers Memorial Scholarship
Rodney K. Morrison Memorial Scholarship

History

Robert Ray and Bula Adams Claxton Endowment
W. Cope Goodwin Memorial Scholarship
J. David Griffin Award
Kennedy History Graduate Award of Excellence
NSDAR American History Award
Elizabeth Parker History Award
Vachel Davis Whatley, Sr. Scholarship

Mass Communications and Theatre Arts

William Boling, III Scholarship
Dora Byron Memorial Scholarship
Friends of Theater New Talent Award
Margaret Gauthier Mass Communications Scholarship
Mildred Fokes Godard Theatre Arts Scholarship
Deborah Headrick Memorial Scholarship
P.J. Younglove Hovey Fine Arts Scholarship
Rhubarb Jones Scholarship
Ossie McCord McLarty Scholarship
David Carter Neale Scholarship
Harold Newell Scholarship
David S. Parkman, III Mass Comm Scholarship
Frances Parkman Memorial Scholarship
George Fields Whatley Scholarship

Mathematics

Shirley Caffee Boykin Scholarship
Jewell Miles Burson Calculus Scholarship
Capt. David Cooley Memorial Scholarship
Marion Crider Scholarship
Dr. Georgia Martin Scholarship
Dr. Chatty Pittman Memorial Scholarship
Vachel Davis Whatley, Jr. Scholarship

Music

Shirley Caffee Boykin Music Scholarship
Annice Whatley Cameron Scholarship
Kelly Drake Memorial Music Scholarship
Vachel V. and Betty Combs Driver Scholarship
P.J. Younglove Hovey Fine Arts Scholarship
DeVonner J. Ingram Music Scholarship
Kawai America Piano Scholarship
Lit-Mu Award
Lit-Mu Opera Scholarship
Inge Manski Lundeen Opera Scholarship
Marching Band Leadership Award
Miriam C. Merrell Scholarship
Mary Lou Munn Memorial Scholarship
Music Miscellaneous Scholarships
Presbyterian Music Scholarship
Genevieve Reynolds Award for Piano Pedagogy
Steve Zachariah Smith Music Scholarship
Sony Music Scholarship
Larry Teal Saxophone Award
Charles Wadsworth Scholarship
Elizabeth Gellerstedt Wright Memorial Scholarship

Physics

Major Allando A. Case Scholarship
Physics and Engineering Club Scholarship
R.K. Redding Construction Scholarship

Political Science and Planning

George T. Bagby Scholarship
Janet Clark Endowment Fund
Dudley Crosson Scholarship
T. Trevor Head Memorial Award
Political Science Department Endowment
Jud Whatley Scholarship

Psychology

Cleo Margaret Hackney Memorial Scholarship
Mike Arons Humanistic Psychology Award
Dr. Robert J. Masek Award
Ann O. Wilson Endowment

Scholarships (continued)

Richards College of Business

Major General John A. Beall Scholarship
D.W. Brooks/Goldkist of West Georgia Scholarship
Henry M. Cameron Scholarship Fund
Charles W. Cox Memorial Scholarship
Rufus M. Dixon Scholarship
Fred Hutchins Scholarship Endowment
James B. Lipham Scholarship
Earline J. Powers Business Education Scholarship
McCalman Executive Roundtable
Dr. Faye S. McIntyre Honorary Scholarship
Richards College of Business Fund Scholarships
Richards College of Business Visionary Endowment
Hugh W. Richards Memorial Scholarship
Dr. Carole E. Scott Scholarship Endowment Fund
Sewell Chair Endowment
Robert J. Stone Business Endowment
Henri Sims and Kennard Seforth Varn Scholarship
Mr. and Mrs. Murray M. Webb Scholarship
Yeager Family Scholarship

Accounting and Finance

Jimmy Couch Memorial Scholarship
Garrett, Stephens, & Thomas Scholarship
Eugene O. Poindexter Scholarship
Naomi Satterfield Scholarship
Donna and Wayne Tervo Accounting Scholarship
Jack E. Threadgill, Sr. Memorial Scholarship Fund

Economics

Economics Department Scholarship
Homer A. Hunt Scholarship
Suzanne Lankford Sullivan Memorial Scholarship
W. Glenn Moore Memorial Scholarship
Dr. Michael D. Raper Memorial Scholarship

Management

Henry M. Cameron Scholarship
Gibson/Overton/Pette memorial Scholarship Fund
Dr. Frank R. Hunsicker Memorial Award
Earline J. Powers Business Education

Marketing and Real Estate

Evelyn Taylor Greer Memorial Scholarship Fund

College of Education

Carrollton Elementary School Scholarship
Lewis L. and Floy Burson Combs Memorial Scholarship
CHREA 20th Century Scholarship
CHREA 21st Century Scholarship
William D. Conner Scholarship
Dr. Dano M. Faires Endowed Memorial Scholarship
Dag Folger Memorial Scholarship
Debbie Forrester Memorials Scholarship
Bernice Freeman Memorial Scholarship
Edna Becker Hallum Scholarship
Sadie M. Hughes Scholarship
Ruth Musick Jackson Scholarship
Wilda Seagraves Jackson Award
Hugh McTeer Memorial Scholarship
Pearl Nix Scholarship
Pilot Club of Carrollton Scholarship
Dr. Thomas W. Sills Scholarship
Wilma Kidd Thornton Memorial Scholarship

Counseling and Educational Psychology

Dr. John J. and Ann K. Pershing Memorial Scholarship

Curriculum and Instruction

Mary White Davidson Scholarship
David Davis Memorial Scholarship Endowment Fund
Dr. Prentice L. Gott Family Scholarship
Connie Wright Gunter Scholarship
Judy Kerr Memorial Scholarship
Joe H. McGiboney Scholarship
Peggy Steelmon Award

Education Leadership and Professional Studies

Edwin M. Blue Scholarship
Linton Deck Leadership Scholarship Fund
Dr. Gus Douvanis Memorial Scholarship
Thomas S. Upchurch Educational Leadership Scholarship

Health, Physical Education, and Sports Studies

David Dugan Scholarship
Dot McNabb Scholarship
Fred F. Hallum Scholarship
Dr. Robert Reeves Scholarship

Scholarships (continued)

Media and Instructional Technology

Priscilla Bennett Family Scholarship
Annie Belle Weaver Memorial Scholarship

Special Education and Speech Language Pathology

Carrollton Civitan Scholarships
Moselle T. Chappell Scholarship
George Colyer Scholarship Fund
Herbert S. and Pauline T. Hatton Scholarship
Louis Herzog Scholarship Endowment
Miss Michele and Dr. Nancy Pollard Scholarship

School of Nursing

Raymond L. Abernathy Graduate Nursing Scholarship
Ayers/Hudson Memorial Nursing Scholarships
Donna Ayers Memorial Nursing Scholarship
Dr. Jeanette C. Bernhardt Merit Scholarship Endowment
Pansy Tisinger Brown Memorial Nursing Scholarship
Carroll-Haralson Medical Alliance Scholarship
DeVillier Family Trust Fund Scholarship
Jonathan and Larry Grams Memorial Scholarship
Betty Griffith Memorial Scholarship
Ila Mae Gunnell Memorial Scholarship
Dr. Claudette Hayes Scholarship
Carl C. and Judith F. Horvath Memorial Scholarship
Jean Aycock McCauley Scholarship
Nursing Department Scholarships
Earnest M. Sewell Scholarship
Peter Woodhouse Ware Graduate Scholarship
Arta Mae Whatley Scholarship
Lettie Pate Whitehead Foundation Nursing Scholarship

Career Services

David J. Favero Memorial Fund
Student Research Assistance Program

Facilities and Grounds

John Junior "Little John" Smith Scholarship

Graduate School

William Conner Scholarship
Ted and Maryon Hirsch Scholarship
Leona Ingram Scholarship
Annie Belle Weaver Memorial Scholarship

Honors College

Advanced Academy of Georgia Scholarships in Honor of Dr. Julian Stanley
Bank of North Georgia Presidential Scholarship
BB&T Presidential Scholarship
James E. Boyd Presidential Scholarship
Elizabeth C. Boyd Presidential Scholarship
Mrs. Jewell Miles Burson Presidential Scholarship
Carroll EMC Presidential Scholarship
Coca-Cola Presidential Scholarship
Ovid Davis Scholarship
Chester Gibson Endowment Scholarship
Richard H. Glanton Presidential Scholarship
Patricia Hughes Memorial Scholarship
Cary Ichter Presidential Scholarship
Irvine Sullivan and Martha Monroe Ingram Scholarship
J. Albert and Martha H. Jones Presidential Scholarships
Christine Kauffman Hanson Presidential Scholarship
Jason Kauffman Presidential Scholarship
Scott Kauffman Presidential Scholarship
Leon Massey Presidential Scholarships
Mary Ryan Miles Scholarship Endowment
Presidential Scholarships
Richards Family Presidential Scholarship
Russell and Mary Sarner Presidential Scholarship
Julian Stanley Academy Presidential Scholarship
Yong D. Suh Scholarship
Systems & Methods Presidential Scholarship
Tisinger Debate Tournament
Watson-Brown Academy Scholarship

International Programs

Dee (Delores D.) Cannon Scholarship
Grace Talley Richards Travel Award

Newnan Center

Larry Grams Newnan Scholarship
Newnan Center Scholarship
Newnan Kiwanis Club Scholarship
Mary Auger Royal Scholarship
Emily Thomasson Sealy Memorial Scholarship

Public Relations

Frances Parkman Journalism Scholarship

Student Development

Render Lee Whatley Scholarship

Source: Development and Alumni Relations

University of West Georgia National Alumni Association

<http://www.westga.edu/alumni/>

The alumni of the University of West Georgia constitute its largest single constituency and represent its most valuable resource for the University. Membership in the Alumni Association is open to all graduates of the State University of West Georgia, West Georgia College, or the Fourth District Agricultural and Mechanical School. A 36-member Board of Directors, along with several lifetime members, direct activities of the Association. The Association informs alumni of institutional plans, progress, opportunities, and needs.

Perspective, the alumni publication, is mailed to all alumni and friends three times a year. The spring issue includes the Honor Roll of Giving and is presented in a magazine format.

Major activities sponsored by the Alumni Association include Homecoming, Dinner with 12 strangers, as well as numerous reunions and special events that involve hundreds of alumni each year.

2009-2010 Officers

Patricia Durrough '90, President

Chris Shuler '85, Vice President

Greg Benda '05, Treasurer

Peggy Smith '61, Secretary

Lorelei Shipp '95, Past President

Source: Office of Development Alumni Relations

Number of Georgia Resident Alumni as of December 2009

County	Total	County	Total	County	Total	County	Total
Appling	7	Crisp	10	Jeff Davis	4	Rabun	43
Atkinson	1	Dade	49	Jefferson	7	Randolph	7
Bacon	10	Dawson	40	Jenkins	1	Richmond	76
Baker	0	Decatur	19	Johnson	3	Rockdale	302
Baldwin	22	Dekalb	1,810	Jones	35	Schley	3
Banks	24	Dodge	8	Lamar	113	Screven	6
Barrow	118	Dooly	2	Lanier	1	Seminole	5
Bartow	720	Dougherty	53	Laurens	26	Spalding	423
Ben Hill	8	Douglas	2,006	Lee	36	Stephens	28
Berrien	5	Early	8	Liberty	15	Stewart	2
Bibb	149	Effingham	18	Lincoln	1	Sumter	27
Bleckley	6	Elbert	23	Long	2	Talbot	19
Brantley	3	Emanuel	10	Lowndes	45	Taliaferro	0
Brooks	9	Evans	6	Lumpkin	46	Tattnall	6
Bryan	15	Fannin	87	Macon	4	Taylor	6
Bulloch	27	Fayette	1,525	Madison	30	Telfair	2
Burke	5	Floyd	1,179	Marion	5	Terrell	4
Butts	89	Forsyth	548	McDuffie	13	Thomas	28
Calhoun	1	Franklin	27	McIntosh	16	Tift	36
Camden	25	Fulton	2,362	Meriwether	178	Toombs	21
Candler	6	Gilmer	121	Miller	7	Towns	29
Carroll	5,497	Glascok	1	Mitchell	6	Treutlen	4
Catoosa	436	Glynn	116	Monroe	56	Troup	613
Charlton	4	Gordon	460	Montgomery	5	Turner	5
Chatham	123	Grady	9	Morgan	54	Twiggs	2
Chattahoochee	1	Greene	44	Murray	330	Union	47
Chattooga	186	Gwinnett	1,933	Muscogee	195	Upson	143
Cherokee	901	Habersham	68	Newton	280	Walker	411
Clarke	146	Hall	388	Oconee	100	Walton	261
Clay	3	Hancock	4	Oglethorpe	18	Ware	24
Clayton	720	Haralson	1,027	Paulding	1,321	Warren	4
Clinch	2	Harris	85	Peach	11	Washington	9
Cobb	3,399	Hart	43	Pickens	144	Wayne	12
Coffee	13	Heard	261	Pierce	14	White	51
Colquitt	13	Henry	930	Pike	167	Whitfield	917
Columbia	79	Houston	125	Polk	752	Wilcox	0
Cook	5	Irwin	4	Pulaski	4	Wilkes	18
Coweta	2,557	Jackson	117	Putnam	43	Wilkinson	8
Crawford	10	Jasper	40	Quitman	1	Worth	9
						Total in Georgia	38,611

** 1,371 are lost and deceased.

Source: Office of Development and Alumni Relations

Number of West Georgia Alumni in the United States as of December 2009

State	Total	State	Total
Alabama	1,084	Montana	13
Alaska	21	Nebraska	10
Arizona	106	Nevada	37
Arkansas	49	New Hampshire	14
California	345	New Jersey	71
Colorado	152	New Mexico	31
Connecticut	33	New York	120
Delaware	15	North Carolina	630
District of Columbia	26	North Dakota	3
Florida	1,265	Ohio	121
Georgia	38,611	Oklahoma	41
Hawaii	11	Oregon	41
Idaho	17	Pennsylvania	121
Illinois	104	Rhode Island	7
Indiana	93	South Carolina	433
Iowa	17	South Dakota	8
Kansas	36	Tennessee	753
Kentucky	133	Texas	418
Louisiana	87	Utah	26
Massachusetts	8	Vermont	9
Maryland	125	Virginia	309
Maine	58	Washington	103
Michigan	66	West Virginia	20
Minnesota	41	Wisconsin	40
Mississippi	113	Wyoming	16
Missouri	60	Total in United States	46,071

*** 2,508 are lost, deceased, or alumni in foreign countries.*

Source: Office of Development and Alumni Relations

Campus Facilities and Grounds



Campus Planning and Facilities

University of West Georgia's Department of Campus Planning and Facilities consists of the Office of the Assistant Vice President for Campus Planning and Facilities, Campus Planning and Development, Risk Management/Environmental Health and Safety, and Facilities and Grounds. Its mission is to professionally operate, maintain, and support the development of quality facilities, grounds, and services, and to support the campus community, students, faculty and staff. Through their efforts they support the university's commitment to the pursuit of academic excellence in a personal learning environment with cost-effectiveness, safety and in an environmentally responsible manner.

Facilities and Grounds is comprised of the Work Information Center, Maintenance, Motor Pool, Custodial Services, Moves/Set-ups, Paint Shop, Construction and Landscaping, and Grounds Maintenance. The function of repair and routine maintenance, energy management, and special projects are scheduled, performed, and managed for the more than 1.7 million square feet of building floor space. Displaying an ongoing and pleasing attitude to its customers, the staff is always willing to address any needs or concerns any given time, seven days a week.

UWG's campus is considered to be one of the most beautiful in the University System of Georgia. Landscaping and Grounds Maintenance continue a long tradition of

systematic landscaping that began in 1919 when Fourth District A&M School Principal, John H. Melson, solicited gifts of trees from each of the then forty-eight states for transplantation to the school campus. UWG landscapers care for the many plant species residing on the almost 400 acre campus. They also construct and maintain irrigation systems, curbs, gutters, sidewalks, and athletic fields. A University nursery cultivates plants for seasonal, new, or replacement landscaping.

Campus Planning and Development provides expertise for all planned works. The department has architectural, engineering, and drafting capabilities within the design group. The department also acts as project managers for contracted work, which happens often due to the scope of work involved and/or the time constraints imposed by the priority level of a project.

The mission of Risk Management/Environmental Health and Safety Department (RM/EHS) is to protect UWG's students, visitors, faculty and staff through training, education, hazard abatement and information dissemination. Additionally, they will assist in the preparation of the students for the future in the area of environmental health and safety. RM/EHS ensures that all activities conducted on campus either meet or exceed requirements set by local, state and federal agencies, thus enhancing the overall working environment while fully supporting the education mission on campus.

Source: Campus Planning and Development

University of West Georgia Land Holdings

<i>Property</i>	<i>Acres</i>
Main Campus	375.44
Northwest Campus	244.26
Evergreen Property	25.32
<i>Total</i>	<i>645.02</i>

Source: Campus Planning and Development

University of West Georgia

Campus Facilities

As of June 30, 2008

<i>Facility</i>	<i>Date of Construction or Acquisition</i>	<i>Approximate Square Footage</i>	<i>Investment*</i>	<i>Approximate Replacement Cost or Present Value**</i>
Bonner House	1843	2,246	8,000	179,680
Kennedy Chapel	1893	880	27,000	193,600
Melson Hall	1907	13,141	48,000	2,102,560
Honors House	1907	3,892	17,000	544,880
Honors Annex	1907	1,080	24,000	129,600
Alumni House	1930	8,335	120,000	1,333,600
Mandeville Hall	1935	11,577	103,000	1,852,320
Martha Munro	1935	10,041	53,000	1,907,790
Old Auditorium	1937	18,172	126,000	3,452,680
Sanford Hall	1938	10,118	170,000	1,618,880
Weight Building	1944	1,420	3,000	71,000
University Communications and Marketing	1948	2,675	1,000	321,000
Aycock Hall	1952	28,709	300,000	4,593,440
Anthropology Building	1954	15,902	277,000	2,782,850
Richards College of Business and Annex	1958	33,086	2,024,000	6,286,340
Parker Hall	1959	17,225	229,000	2,756,000
Art Annex	1959	8,885	40,000	1,554,875
Callaway Building	1962	22,154	309,000	4,873,880
Row Hall	1963	35,495	927,000	5,679,200
Cobb Hall	1964	25,430	503,000	4,068,800
Strozier Hall	1964	23,065	497,000	3,229,100
Gunn Hall	1965	37,916	760,000	4,929,080
Boykin Hall	1966	37,889	681,000	4,925,570
University Community Center	1967	62,673	1,566,000	9,087,585
Boyd Building	1968	38,570	767,000	7,714,000
Library	1968	109,155	3,428,000	22,922,550
Pafford Building	1968	43,158	758,000	7,552,650
Downs Hall	1969	62,397	1,388,000	8,111,610
Humanities	1970	77,328	1,489,000	13,532,400
Watson Hall	1970	57,036	1,324,000	7,414,680
Education Center	1970	63,688	4,188,000	11,145,400
Health Services	1971	9,114	371,000	1,959,510
Bowdon Hall	1971	58,797	1,587,000	7,643,610
Strozier Annex	1972	26,801	750,000	3,484,130
Biology	1972	72,560	2,300,000	14,512,000
Facilities/Plant Operations	1972	12,674	140,000	1,774,360
Warehouse/Supplies	1972	7,608	98,000	380,400
Vehicle Repair Shop	1972	3,900	40,000	175,500
Tyus Hall	1973	51,119	1,329,000	8,179,040
Chemical Storage	1974	300	3,000	30,000
Food Service (Z6)	1974	58,569	1,584,000	9,371,040

* Rounded to the nearest \$1,000

** From the Facilities Inventory Report and are determined by the Board of Regents.

Source: Campus Planning and Development

Campus Facilities

<i>Facility</i>	<i>Date of Construction or Acquisition</i>	<i>Approximate Square Footage</i>	<i>Investment*</i>	<i>Approximate Replacement Cost or Present Value**</i>
Locksmith/Electronics	1974	987	4,000	78,960
Facilities Storage & Shed	1974	5,054	51,000	126,350
Observatory	1979	484	16,000	38,720
Football Field House	1980	25,772	668,000	2,834,920
Track Storage	1980	800	5,000	88,000
Newnan Center Bldg. 2000 (Rental)	1980	3,200	320,000	512,000
Newnan Center Bldg. 3000 (Rental)	1980	2,400	25,000	84,000
Student Activities Center	1981	9,000	91,000	990,000
Storage Warehouse	1981	5,822	27,000	203,770
Football Storage	1984	600	6,000	66,000
Publications and Printing	1985	7,585	135,000	606,800
Townsend Center for the Performing Arts	1987	28,721	2,934,000	5,456,990
Bookstore (Rental)	1987	8,001	7,000	1,120,140
Intramural Restroom	1988	528	7,000	58,080
Public Safety Storage	1988	245	1,000	12,250
Art Anagama Kiln	1990	400	1,000	10,000
Dugout Home	1992	513	6,000	56,430
Dugout Visitors	1992	513	6,000	56,430
Baseball Press Box	1992	1,768	50,000	194,480
Waring Archaeology Lab	1992	6,296	32,000	440,720
Campus Planning and Development	1992	2,400	40,000	192,000
Performing Arts Center Warehouse/Storage	1992	2,413	22,000	84,455
Newnan Center Bldg. 1000 (Rental)	1992	11,400	600,000	1,824,000
West Communications Hut	1994	253	33,000	88,550
Education Center Annex	1995	41,667	4,347,000	8,958,405
Archaeology Storage Bldg.	1995	288	3,000	8,640
Technology- Enhanced Learning Center	2000	115,811	20,204,000	26,057,475
Landscape Storage Shed	2002	1,800	18,000	45,000
Adamson Hall	2003	21,406	2,785,000	4,067,140
Band Storage	2003	720	29,000	21,600
Landscaping Greenhouse	2003	3,000	60,000	210,000
Suite 1 (Rental)	2004	51,365	4,877,000	5,393,325
Suite 2 (Rental)	2004	36,976	3,511,000	3,882,480
Suite 3 (Rental)	2004	44,169	4,193,000	4,637,745
Commons (Rental)	2004	6,440	624,000	676,200
Soccer Field Restrooms	2004	260	13,000	16,900
Landscaping Shed	2004	250	4,000	5,000
Photography Studio	2005	903	65,000	108,360
Arbor View Apartment "A" (Rental)	2005	73,352	4,418,000	7,701,960
Arbor View Apartment "B" (Rental)	2005	62,885	3,573,000	6,602,925
Arbor View Apartment "C" (Rental)	2005	53,268	3,144,000	5,593,140

* Rounded to the nearest \$1,000

** From the Facilities Inventory Report and are determined by the Board of Regents.

Source: Campus Planning and Development

Campus Facilities

<i>Facility</i>	<i>Date of Construction or Acquisition</i>	<i>Approximate Square Footage</i>	<i>Investment*</i>	<i>Approximate Replacement Cost or Present Value**</i>
Facilities Storage Building	2006	10,000	194,000	250,000
Campus Center (HPE 1965)	2006	131,448	21,817,000	24,975,120
Callaway Building Annex	2008	29,500	4,990,000	6,490,000
Coliseum (Health and Wellness Building)	2008	122,500	23,044,000	26,950,000
Greek Village A Kappa Delta (Rental)	2009	6,328	654,000	791,000
Greek Village B Kappa Alpha (Rental)	2009	5,150	528,000	643,750
Greek Village C Pi Kappa Phi (Rental)	2009	6,328	654,000	791,000
Greek Village D Alpha Xi Delta (Rental)	2009	6,328	654,000	791,000
Greek Village E Alpha Tau Omega (Rental)	2009	5,150	528,000	643,750
Greek Village F Alpha Gamma Delta (Rental)	2009	6,328	654,000	791,000
Greek Village G Delta Chi (Rental)	2009	3,268	331,000	408,500
Greek Village H Tri Delta (Rental)	2009	6,328	654,000	791,000
Greek Village I Pi Kappa Alpha (Rental)	2009	5,150	528,000	643,750
Greek Village J Phi Mu (Rental)	2009	6,328	654,000	791,000
Greek Village K (Rental)	2009	3,632	377,000	454,000
Greek Village L (Rental)	2009	3,268	331,000	408,500
Greek Village M (Rental)	2009	3,632	377,000	454,000
Greek Village N (Rental)	2009	3,268	331,000	408,500
Greek Village O Chi Omega (Rental)	2009	6,328	654,000	791,000
Greek Village P Kappa Sigma (Rental)	2009	6,328	654,000	791,000
Greek Village Q Community Center (Rental)	2009	3,011	300,000	376,375
Greek Village R Guest House (Rental)	2009	1,945	200,000	243,125
Stadium Home Restrooms North (Rental)	2009	3,807	1,250,000	837,540
Stadium Home Restrooms South (Rental)	2009	3,807	1,250,000	837,540
Stadium Home Tickets (Rental)	2009	408	100,000	89,760
Stadium Home Concessions North (Rental)	2009	944	250,000	207,680
Stadium Data/Mech/Electrical (Rental)	2009	759	50,000	121,440
Stadium Security (Rental)	2009	756	100,000	120,960
Stadium Home Concessions South (Rental)	2009	944	250,000	207,680
Stadium Press and Suites (Rental)	2009	15,496	5,089,000	3,409,120
Stadium Visitor RR and Tickets (Rental)	2009	4,198	1,000,000	923,560
Stadium Visitor Concessions/Lockers (Rental)	2009	3,415	1,000,000	751,300
Stadium Administrative Office Bldg (Rental)	2009	41,623	5,000,000	4,994,760
Women's Fieldhouse (Rental)	2009	4,361	1,132,000	959,420
Softball Visitor Dugout (Rental)	2009	350	11,000	38,500
Softball Home Dugout (Rental)	2009	350	11,000	38,500
TOTALS		2,287,259	162,913,000	366,802,660

* Rounded to the nearest \$1,000

** From the Facilities Inventory Report and are determined by the Board of Regents.

Source: Campus Planning and Development

Information Resources and Technology



Irvine Sullivan Ingram Library

<http://www.westga.edu/~library/>

As the academic heart of the campus, the Ingram Library provides both online and in-house collections and services to meet curricular needs. The four story building of some 85,000 square feet provides seating space for 700, an electronic classroom, a conference room, small group study rooms, lockable faculty carrels, and computers and other equipment for accessing materials retained in print, online, recorded, and micro formats. Wireless access to internet resources is available throughout the building.

The library is named in honor of Irvine Sullivan Ingram, the institution's first president. The glass enclosed lobby overlooks a study garden designed in honor of Maurice Townsend, fifth president of the university. The lobby area provides study tables and casual seating where patrons may enjoy food and drink while accessing the wireless network, working individually or in small groups, or browsing through the new books, current newspapers, and periodicals on display. Ingram Library houses a collection of student and faculty art, including "The Prophet," a bronze by Gary Coulter, presented by the Class of 1968, which stands at the entrance, and "Sporangium Disseminating Spores," a large ceramic installation by Cameron Covert and Bruce Bobick, completed in 1980. Rotating displays of student art and writing inspired by programs developed by the Thomas B. Murphy Holocaust Teacher Training and Resource Center, which is located on the second floor of the library, may be viewed in the Center and in the lobby.

Library collections include over 400,000 cataloged volumes, over 1,100,000 microforms, over 11,000 audiovisual items, and more than 20,000 maps and charts. The library provides access to some 15,000 print and electronic serials, including magazines, scholarly journals, and newspapers. As a selective depository for federal documents, the library houses an extensive collection of United States government publications and provides access to government information available in online and other electronic formats.

The library participates in state and regional consortia, facilitating extensive access to the collective resources of university system and other libraries. The library catalog, provided through Georgia Interconnected Libraries (GIL), lists materials available in Ingram Library collections, and provides links to catalogs of other libraries. West Georgia students, faculty, and staff may request books from any university system library through the online GIL Express service, a feature of the universal catalog, and they also have check out privileges when visiting system libraries. In addition, the University of West Georgia is a member of the Atlanta Regional Council for Higher Education (ARCHE), which allows students, faculty and staff to utilize the resources of member libraries.

Ingram Library provides interlibrary loan service through its web site, facilitating the borrowing of books from libraries throughout the country. Articles requested through interlibrary loan are transmitted to patrons electronically.

Library users have access to Georgia Library Learning Online (GALILEO), an online library of databases, full text electronic journals, and reference resources available to all Georgians, as well as to an extensive range of electronic materials selected to support the university's academic programs. All licensed electronic materials are available to university students and faculty through any computer with internet access. By providing access to an extensive range of online materials, developing an electronic reserve system and online request systems for obtaining materials from other libraries, the library ensures that students enrolled at the university's remote class sites and in online courses are afforded the same level of library support as those who attend classes on the Carrollton campus. Fax and courier services to off campus class sites, and arrangements with libraries in Newnan and other locations also support off campus students.

The Annie Belle Weaver Special Collections area on the third floor of Ingram Library provides access to information about the history of the university and the geographic area it serves. Photographs, family histories, and other materials associated with the west Georgia region are included in Special Collections, as are materials on sacred harp music and American psalmody. A special effort is being made to acquire the manuscript collections of individuals who have represented the region in state or national legislative bodies. One of the most notable collections is that associated with Georgia's Political Heritage Program, begun by university faculty in 1985. The collection includes taped interviews with state and national leaders, among them most of Georgia's post-World War II governors, U.N. Ambassador Andrew Young, U.S. House Speaker Newt Gingrich and Georgia House Speaker Tom Murphy. Senator Herman Talmadge was the first interview subject for the program. The Talmadge collection is particularly significant as it includes some thirty-five interviews taped between 1985 and 1995 as well as interviews with his staff and some of his supporters.

Information about library programs and services is distributed through publications available in the building, and through the library web site. An online newsletter chronicles developments within the library, while an online announcements site outlines upcoming events, programs and classes.

The library pursues an aggressive instruction program. A for-credit course, which is part of Area B of the core curriculum, is taught in the library's computer-enhanced classroom as well as via the web. The course is designed to orient students to doing research in academic libraries and to critically evaluating information resources. Throughout the semester students may register on the library web site to attend basic library skills classes addressing various topics. In addition, classes tailored to specific assignments and other types of customized instruction are developed for upper-level and graduate courses. Individuals seeking assistance with library resources and research needs can utilize reference services at the reference desk, via telephone, and through the online *AskAL* service available through the library web site.

Thomas B. Murphy Holocaust Teacher Training and Resource Center

The Thomas B. Murphy Holocaust Teacher Education Training and Resource Center, administered by the Georgia Commission on the Holocaust and located on the second floor of Ingram Library, is the only Holocaust center in the United States devoted to teacher training located in a state-supported institution. With the study of the Holocaust as a catalyst, the Center encourages and supports human understanding and dignity by developing programs to open minds and hearts to the appreciation of all of humankind. The Center's multimedia resource collection includes books, videotapes, archival, and electronic materials augmented by resources available within the collections of Ingram Library. Working collaboratively with academic departments and area organizations, the Center provides curriculum development assistance, teacher conferences, staff development seminars, exhibits, and other programs.

Source: UWG Undergraduate Catalog 2009-2010

University of West Georgia

Library Acquisitions and Services

Fiscal Years 2000 – 2009

Holdings	2000	2001	2002	2003	2004
Volumes added during the year	7,515	10,200	8,050	8,359	9,681
Volumes at end of the year	360,696	370,896	378,946	384,249	391,330
Reels of microfilm at end of year	23,526	23,230	23,047	22,827	22,773
Physical units of other microtext at end of year	1,059,599	1,080,079	1,104,126	1,117,611	1,132,936
Periodical titles received at end of year*	1,352	1,387	1,342	1,226	1,194
Electronic Periodical Titles	-	-	-	-	-
Items					
U.S. Documents	211,535	208,215	207,525	206,718	201,779
U.S. Documents (Volumes on Microfiche)**	81,770	86,576	84,807	86,775	75,198
Collection Development					
Expenditures for Supplies and Materials-Books	237,864	355,965	438,085	419,268	554,758
Expenditures for Periodicals	246,346	244,717	370,189	396,944	331,843
Expenditures for Audio Visual Materials	7,025	10,056	4,509	8,452	5,482
Circulation***	86,766	75,369	74,107	65,571	48,524
Interlibrary Loans					
Borrowed	3,692	3,692	2,724	3,453	3,097
Loaned	4,920	4,920	5,538	5,746	5,239
Full Text Retrievals from electronic databases	-	-	-	-	235,622
Credit Hours Generated LIBR1101	409	565	776	824	807
Reference Questions ****	33,956	33,956	8,632	8,632	23,504
Holdings	2005	2006	2007	2008	2009
Volumes added during the year	7,543	12,704	8,667	5,524	12,567
Volumes at end of the year	397,169	404,580	413,782	423,903	406,989
Reels of microfilm at end of year	24,447	24,554	24,544	24,544	22,046
Physical units of other microtext at end of year	1,143,479	1,142,429	1,098,523	1,143,479	485,460
Periodical titles received at end of year*	1,101	1,228	1,228	1,247	932
Electronic Periodical Titles	-	-	21,000	27,142	30,040
Items					
U.S. Documents	201,779	202,339	212,545	204,774	198,883
U.S. Documents (Volumes on Microfiche)**	65,854	58,655	59,655	31,734	46,708
Collection Development					
Expenditures for Supplies and Materials-Books	699,840	683,620	269,618	497,447	378,757
Expenditures for Periodicals	534,350	371,710	464,806	458,844	412,439
Expenditures for Audio Visual Materials	10,953	19,668	8,200	19,378	5,207
Circulation***	46,401	45,667	55,187	51,631	60,924
Interlibrary Loans					
Borrowed	5,538	3,045	2,270	2,347	1,858
Loaned	8,106	4,968	4,696	4,891	5,316
Full Text Retrievals from electronic databases	319,747	343,268	***	702,377	370,939
Credit Hours Generated LIBR1101	604	492	442	496	484
Reference Questions ****	13,200	13,200	9,850	10,750	10,641

* Based on E Journals Search Results via SFX Knowledge Base 12/1/2007

** Decline due to electronic resources

*** Vendor Statistics incomplete as of Reporting date

**** Statistical Change

Source: Irvin Sullivan Ingram Library

Information Technology Services

<http://www.westga.edu/its/>

Information Technology Services (ITS) provides technology leadership and support to all areas of the University of West Georgia community. ITS offers a wide variety of services — from user assistance and training to planning and maintaining the campus-wide network. Providing this range of services makes the ITS role a very challenging one. To successfully meet the challenge, ITS is continually upgrading services and equipment that are available to the campus community.

ITS maintains support of the computer systems responsible for the campus academic and administrative systems, as well as the data and telecommunication network. The campus data network is a switched, high-speed network providing connections to students in the computer labs and the students living in the residence halls. High-speed Internet access from the University campus is provided through a link to PeachNet, operated by the University System of Georgia. Student computer labs are located in the College of Business, the College of Arts and Sciences, the College of Education, and the University Community Center. Many of these labs are used for instruction; however, labs located in the Technology-enhanced Learning Center and the Community Center are open for general use. ITS also supports faculty and students with instructional technology in the classroom, as well as assistance with instructional design services.

Source: Information Technology Services 2009-2010

Institutional Research and Planning



Institutional Research and Planning

www.westga.edu/irp

Mission

The University of West Georgia's strong commitment to "Educational Excellence in a Personal Environment" is central to the mission of the Department of Institutional Research and Planning. The Department has, as its primary mission, the collection of data (from both internal and external sources), and the timely analysis, distribution, and presentation of this information for use in planning, decision-making, and policy formulation at the University.

The Department is also responsible for ensuring the accuracy of vital University statistics and for reporting these data to a broad spectrum of stakeholders including regulatory entities, management, faculty, private organizations, parents and the general public. Another major function of the Department is to respond to diverse requests for data from members of the University community and to assist with research and assessment methodology, evaluation and analysis.

Institutional Research and Planning also serves as records custodian for the University of West Georgia. In this capacity, it promotes an efficient administration and management of State governmental records in compliance with the Georgia Records Act and the Georgia Open Records Act. Institutional Research and Planning also advises departments on appropriate records-keeping techniques and systems and guides in developing records retention schedules.

History

The Department of Institutional Research and Planning was established in 1967 at West Georgia. Through various studies, IRP evaluates the University culture by investigating campus community norms and values. Research findings aid the administration in determining the extent to which values are in conflict and provide a basis for policy analysis and identification of potential problems. In the early 1980's, University of West Georgia was the first University System of Georgia institution to conduct institutional retention studies. Retention studies indicate causes of attrition, and such studies analyze retention-attrition behavior and provide bases for policy revisions, such as establishing alternative admissions criteria and strategic enrollment planning.

Institutional Research supports the University development efforts by providing institutional information for external fund-raising projects, conducting case studies for use in fund drives, and providing information necessary for data-based development strategies. Institutional Research techniques routinely provide evidence that development efforts may utilize to assess their own effectiveness and to consider the viability of new development strategies.

Goals

The Department of Institutional Research and Planning adopted the following goals to facilitate institutional effectiveness and to foster mechanisms to assess results:

- Serve the executive functions of the institution by providing a reliable and proactive management and decision-support system.
- Promote an improvement of West Georgia's planning process in compliance with the Board of Regents' policies and the Southern Association of Colleges and Schools' criteria.
- Generate data, information, and analytical reports on institutional research topics designed to improve information usage in the planning process at the University.
- Assist the executive and administrative officers of the University in facilitating institutional assessment geared toward institutional effectiveness.
- Provide systematic collection and reporting of standard institutional, regional, environmental, and student-centered information for institutional planning and assessment.
- Reply in a punctual manner to spontaneous requests for data, descriptive information, and analytical reports
- Provide guidelines and standards to various departments for establishing and maintaining successful individual records management programs that comply with the Georgia Records Act and the Open Records Act.

Institutional Research and Planning

www.westga.edu/irp

Major Projects

The Department of Institutional Research conducts various studies and provides support in completing the following projects:

- Annual Report of Institutional Progress
- Recent and Long-term Alumni Surveys
- National Study of Instructional Costs and Productivity
- National Study of Student Engagement
- Comparator and Aspirational Peer Institutions Analysis
- Institutional Key Performance Indicators
- Annual SACS Institutional Profile Update
- NCAA Athletic Interest Survey
- U.S. Department of Education's IPEDS Reports
- Five-Year Departmental Report
- Institutional Strategic Plan
- NCAA Enrollment and Persistence-Rates Disclosure Report
- Study of the Perceptions of West Georgia
- Records Management
- External Surveys
- University Printed Fact Book
- University On-line Fact Book

(www.westga.edu/irp)

The Department continues to provide assistance to various departments and committees regarding preparation for re-accreditation by:

- Southern Association of Colleges and Schools (1866 Southern Lane, Decatur, Georgia 30033-4097: Telephone number 404-679-4501)

- AACSB International – The Association to Advance Collegiate Schools of Business
- American Chemical Society
- Commission on Collegiate Nursing Education
- Computing Accreditation Commission of the Accreditation
- Board for Engineering and Technology
- Council for Humanistic Transpersonal Psychology
- National Association of Schools of Music
- National Association of Schools of Art and Design
- National Association of Schools of Theatre
- National Association of Schools of Public Affairs and Administration

The Department's staff are active in their professional fields, attending several state and national conferences, and participating in several workshops. Staff made presentations at professional meetings and were active participants in a number of sessions as moderators.

The unit collects, analyzes, and reports data and information relative to this institution and the University System's enrollment, graduation rates, course taking behavior, academic achievement, persistence rates, Regent's Test scores, declared majors, and degrees conferred. Other efforts to perpetuate thoughtful planning include production of annual department fact sheets, and the annual Fact Book. The unit responds to many requests for data pertaining to enrollment, student demographics, academic program statistics, and general environmental indicators.