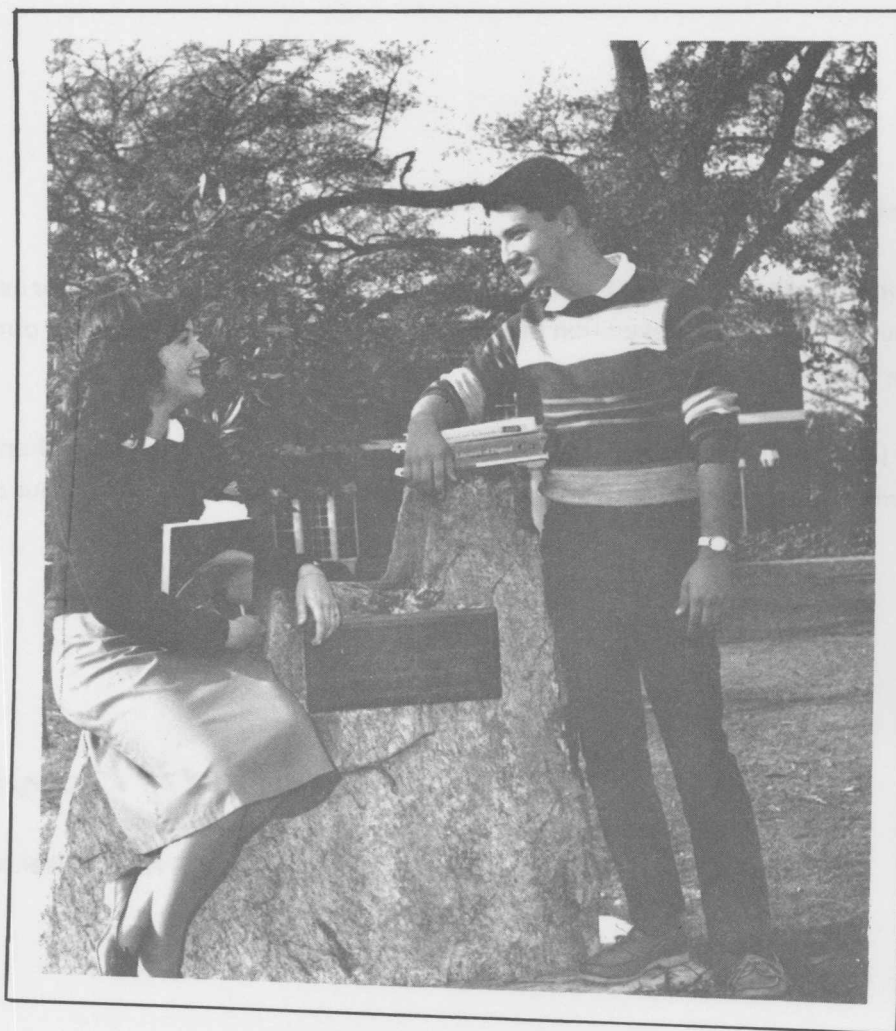


1980 - 81 West Georgia College Fact Book



The Office of Instructional and Research Services
West Georgia College
Carrollton, Georgia 30118-0001

*The publication of this document was partially supported by
funds from Title III, Strengthening Developing Institutions
Program. Grant No.: G8102355.*

West Georgia College

Carrollton, Georgia 30118

A SENIOR COLLEGE IN THE UNIVERSITY SYSTEM OF GEORGIA

404-834-1388

OFFICE OF THE PRESIDENT

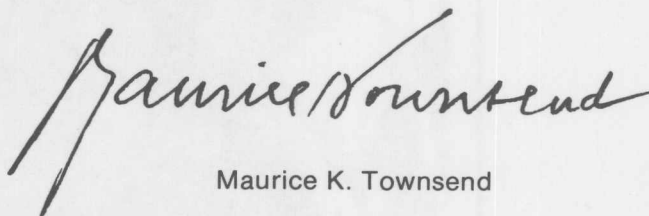


Dear Colleagues:

The West Georgia College *Fact Book* contains a multitude of data designed for your use in meeting diverse information needs. As a first edition of its kind of format and scope, it reflects our growth and development for much of the past decade.

The Office of Instructional and Research Services prepared this document by gathering data and information from many other offices. I wish to express my appreciation to all for your cooperation.

Sincerely,



Maurice K. Townsend

WEST GEORGIA COLLEGE FACT BOOK

Preface & Acknowledgements

It is with great pleasure that we present this first edition of the *West Georgia College Fact Book*. Our goal is to provide a ready reference of quantifiable information about West Georgia College for a wide audience. Through the information, tables, graphs and charts contained in this *Fact Book* emerges a profile of West Georgia College; and a history of its growth as a major senior college in the University System of Georgia.

The *Fact Book*, like the Office of Instructional and Research Services, exists to serve the informational needs of the West Georgia College community. We solicit your comments for the improvement of this publication for future editions.

This first West Georgia College *Fact Book* was designed and edited under the supervision of Dr. Michael T. McCord, Associate Director of Instructional and Research Services. Special recognition is given to Ms. Jessica A. Lee, Administrative Coordinator-Research, and Mr. Robert O. Ingle, Research Programmer, for their tireless efforts to make the *Fact Book* an accurate research and planning tool. Acknowledgement is made to Ms. Peggy S. Coleman, who typed the various drafts and final copy of the manuscript. Finally, our gratitude is extended to Ms. Lisa W. Ledbetter, Director of Publications and Printing, and the Central Duplicating Staff for their dedicated service.

Richard A. Folk, Director
Instructional & Research Services

WEST GEORGIA COLLEGE FACT BOOK

Table of Contents

General Information

History of West Georgia College	2
Purpose of the College	3
Accreditations & Affiliations	3
Campus Description	4
Map of Campus	5

Administration

Board of Regents, University System of Georgia	7
WGC General Administration	8
WGC Academic Administration	8
WGC Organizational Chart.....	10

Student Information

SAT Scores of Entering Freshmen, 1974/75 — 1979/80	12
High School & Freshman Grade Point Averages of Entering Freshmen, 1974/75 — 1979/80	12
Composition of Student Body, Fall 1981	13
Minority Enrollment, Fall 1981	13
Geographic Distribution of Student Body, Fall 1981	14
Detailed Composition of Student Body, Fall 1980 & Fall 1981	15
WGC Enrollment & Full Time Equivalents, 1976-1981	16
Student Headcount & FTE History with Percent Increase or Decrease	17
Admissions Data: New Student History, Fall 1976-Fall 1981	18
History of Continuing Education Programs, FY 1976-FY 1981	18
Retention Rates of Fall Quarter Freshman Classes, 1974-1980	19
Age Distribution of WGC Students, Fall 1976 vs. Fall 1981	20
History of Changes in Ages of WGC Students, Fall 1976-Fall 1981	21
Freshman & Graduate Enrollment, Fall 1971-Fall 1981	22
Enrollment by Sex, 1976-1981	23
Enrollment by Marital Status, 1976-1981	23
Undergraduate Academic Profile by Degree, Fall 1981	24
Graduate Academic Profile by Degree, Fall 1981	24

Degree Information

Degrees & Majors Authorized By The Board of Regents, Fall 1981	26
Undergraduate & Graduate Degrees Conferred, 1970/71 — 1980/81	27
Detailed History of Degrees Granted, 1974/75 — 1980/81	28

Faculty Information

Faculty Profile by Highest Degree Earned, 1980/81	31
Faculty Profile by Rank, 1980/81	31
Faculty Profile By Tenure Status, 1980/81	32
Faculty Profile By Sex, 1980/81	32
Summary of Faculty Profiles, 1980/81	33

Financial Information

Education & General Budget Allocations, FY 80 & FY 81	35
General Budget Growth, FY 72-FY 81	36
Percent Distribution of Revenue By Source, FY 78-FY 82	37
Percent Distribution of Expenditures By Function, FY 78-FY 82	36
E & G Expenditures Per FTE Student, FY 78-FY 82	39
Average Salary By Employee Category, FY 78-FY 82	39

Quarter Credit Hour Information

Quarter Credit Hours Per Student Enrolled By Level, Fall 1971 — Fall 1981	41
Detailed Enrollment & QCH History, FY 76-Fy 82	42
Headcount Relative to the FTE & QCH History, Fall 1971 — Fall 1981	43

Research

Distribution of Grants and Contracts	45
Faculty Research Grants	46

Alumni Association

WGC Alumni Association	48
Officers of Alumni Association	48
WGC Foundation	49
Officers and Board of Trustees, WGC Foundation	49
Annual Fund Drive Results	50
Geographical Distribution of Alumni, 1980 State of Georgia	51
United States	52

Physical Plant

Classroom Utilization	54
Laboratory & Office Utilization	55
Physical Plant	56
Land Holdings	57

Library

Irvine S. Ingram Library	59
Library Acquisitions, FY 79-FY 81	60

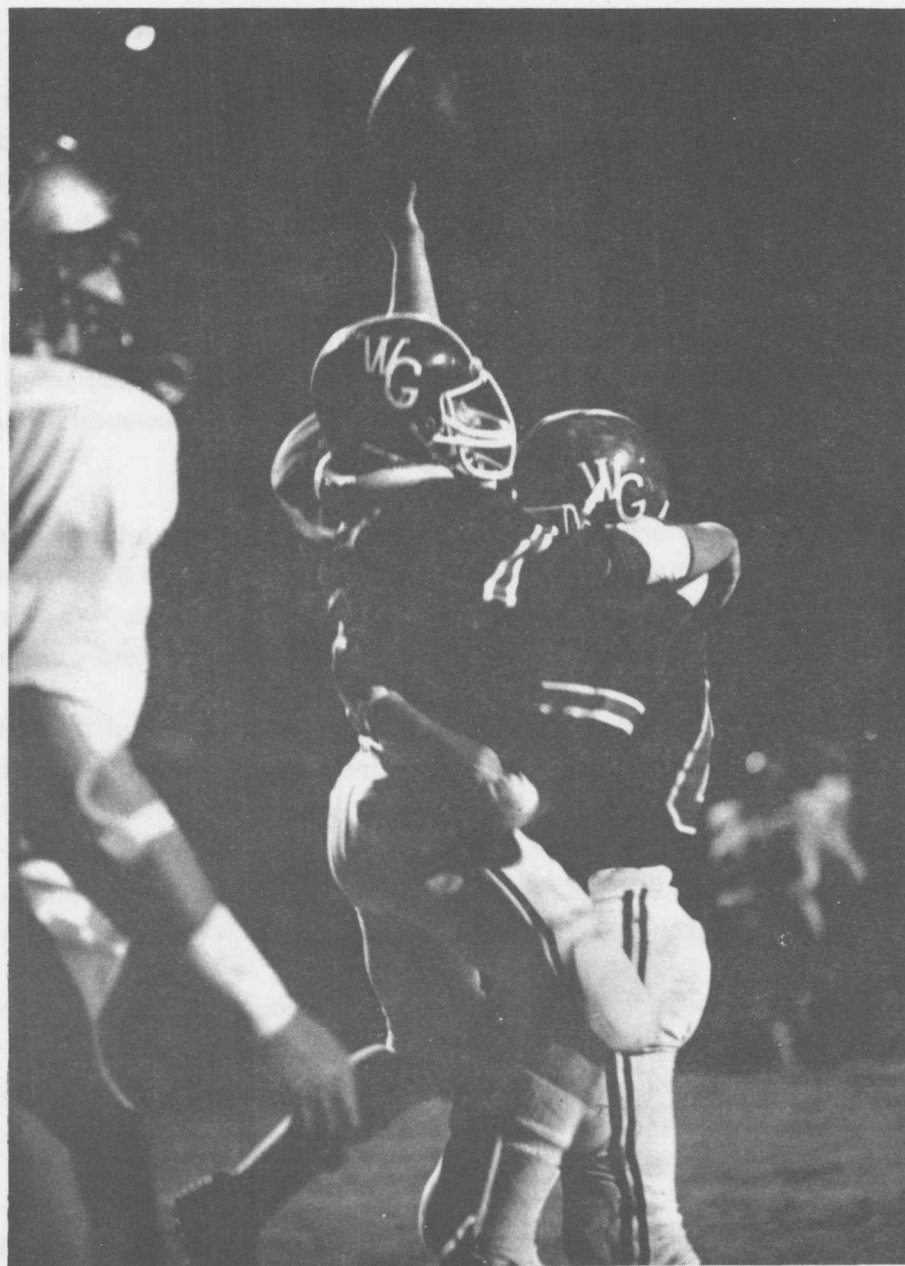
Computer Resources

Hardware	62
Utilization	63

Student Services

Admissions	65
Financial Aid	65
Health Services	65
Intramurals & Recreation	65
Placement & Cooperative Education	65
Registrar's Office	65
Residence Life	66
Student Activities	66
Student Development	66

General Information



WEST GEORGIA COLLEGE

HISTORY

West Georgia College is a coeducational, residential, liberal arts institution located in Carrollton, Georgia. A senior college unit of the University System of Georgia, it enrolls students from most counties in Georgia, as well as from other states and several foreign countries.

The College is situated within the western limits of Carrollton, the county seat of Carroll County. Carrollton, with a population of approximately 15,000, provides an ideal combination of small-town neighborliness and big-city progressiveness. The College's physical facilities, valued at more than \$35 million, include over forty structures of learning, living and recreation on its 383-acre wooded campus.

West Georgia College originated as the Fourth District Agricultural and Mechanical School, one of ten such institutions established by the State of Georgia in 1906. Twenty-seven years later, Carrollton's A & M School became West Georgia College, a junior college established by an act of the Board of Regents of the University System of Georgia.

In 1939, the College was authorized by the Board of Regents to add a three-year program in elementary education. In 1957, the institution was authorized to confer the B.S. degree in Education, making it a four-year senior college unit of the University System of Georgia. Two years later, West Georgia College added the Bachelor of Arts degree in the fields of English, history and mathematics.

During the following twelve years, West Georgia College became one of the fastest growing institutions of higher learning in the South. From an enrollment of 576 in 1957, the institution's student body doubled every four years. Now with an enrollment of more than 5,000 students, West Georgia offers seven undergraduate degrees, the Bachelor of Arts, Bachelor of Science, Bachelor of Science in Education, Bachelor of Business Administration, Bachelor of Music, Bachelor of Science in Recreation, and Bachelor of Science in Earth Science with majors in nearly fifty different fields.

In 1967, the Board of Regents authorized the initiation of a graduate program at the master's level. The following six Masters degrees are offered in a combined total of thirty-three areas of study: Master of Arts, Master of Business Administration, Master of Education, Master of Music, Master of Public Administration, and Master of Science. The Specialist in Education degree is offered in seven areas of study.

The Associate of Arts, with a major in education, and the Associate of Science, with majors in accounting, computer science, criminal justice, finance, marketing, nursing and office administration, have all been added as two-year programs since 1973.

SOURCE: *WGC Undergraduate Catalog, 1981-82*

PURPOSE OF THE COLLEGE

West Georgia is a multi-purpose public institution providing a liberal arts experience for all its students as a base for their entire educational program. It provides educational preparation in the liberal arts and for professional careers, community college terminal instruction for students from the local geographical area, and special academic options in honors, general and transitional program areas. It seeks to provide a distinctive and realistic educational environment wherein each student may attain a disciplined and open mind, a capacity for self development, and the knowledge and skills essential for living in a free society. This environment includes the opportunity for original thinking, the exchange of ideas, and scholarly involvement with one's natural and cultural heritage.

In the fulfillment of this purpose, the College asserts its faith in higher education, liberal and otherwise, for all who earnestly seek it and can profit from it. The College emphasizes creative teaching, encourages research, and promotes the general advancement of knowledge through undergraduate and graduate programs within a broad spectrum of studies. Programs and services vital to student life, including attention to physical and mental well-being and the problems of adjusting to societal mores, are provided to complement these academic aims. The College also seeks to serve as a center to promote the development of human and natural resources through continuing education and public service programs.

ACCREDITATIONS AND AFFILIATIONS

West Georgia College is fully accredited through the master's level by the Southern Association of Colleges and Schools. All programs preparing teachers through the master's level are accredited by the National Council for Accreditation of Teacher Education. The teacher education programs are fully recognized and accredited by the Georgia State Department of Education. Other specific academic programs with accreditation are the music program by the National Association of Schools of Music and the nursing program by the National League for Nursing and the Georgia Board of Nursing.

The College holds institutional membership in the following organizations:

- American Council on Education
- American Association of State Colleges and Universities
- American Association of Colleges for Teacher Education
- American Assembly of Collegiate Schools of Business
- Georgia Association of Colleges
- National Association for Foreign Student Affairs
- National Association of Schools of Music
- National Business Education Association
- National Commission on Accrediting
- National Council for Accreditation of Teacher Education
- Southern Association of Colleges and Schools

SOURCE: WGC Undergraduate Catalog, 1981-82

THE CAMPUS

The campus is a unique blend of the old and the new. Covered with a variety of trees and flowers, the 383-acre campus is dotted with structures of the early 1900's, as well as buildings exemplifying the most contemporary modes of architecture.

On the front or "Old Campus" as it is sometimes called, a three-block-long expanse of rolling hills shaded by scores of old, towering oak, elm, and maple trees surrounds a number of faded brick buildings stretching in a semi-circle adjacent to the park. This is where West Georgia College began as an A & M School in 1906.

Beyond the Old Campus is a modern academic complex composed of a library, social science, humanities, and math-physics buildings, all constructed in recent years. Other new buildings in the area include a three-story student center, a health and physical education center featuring a 3,000 seat gymnasium and an indoor pool, and one of the most modern college infirmaries in the state.

Much of the College's recent physical development has been on the western side of the campus. Located in the area is one of the most unique structures in the University System, the Education Center. Completed in the summer of 1970, the center epitomizes the newest concepts in school architecture. The ultra-modern structure contains five large lecture-demonstration rooms which can be changed by sliding partitions into an auditorium seating nearly 1,000, and instructional materials center, television and sound recording studios, audio-visual laboratory and dark room, counseling rooms, group observation rooms, study carrels, and other areas of independent study.

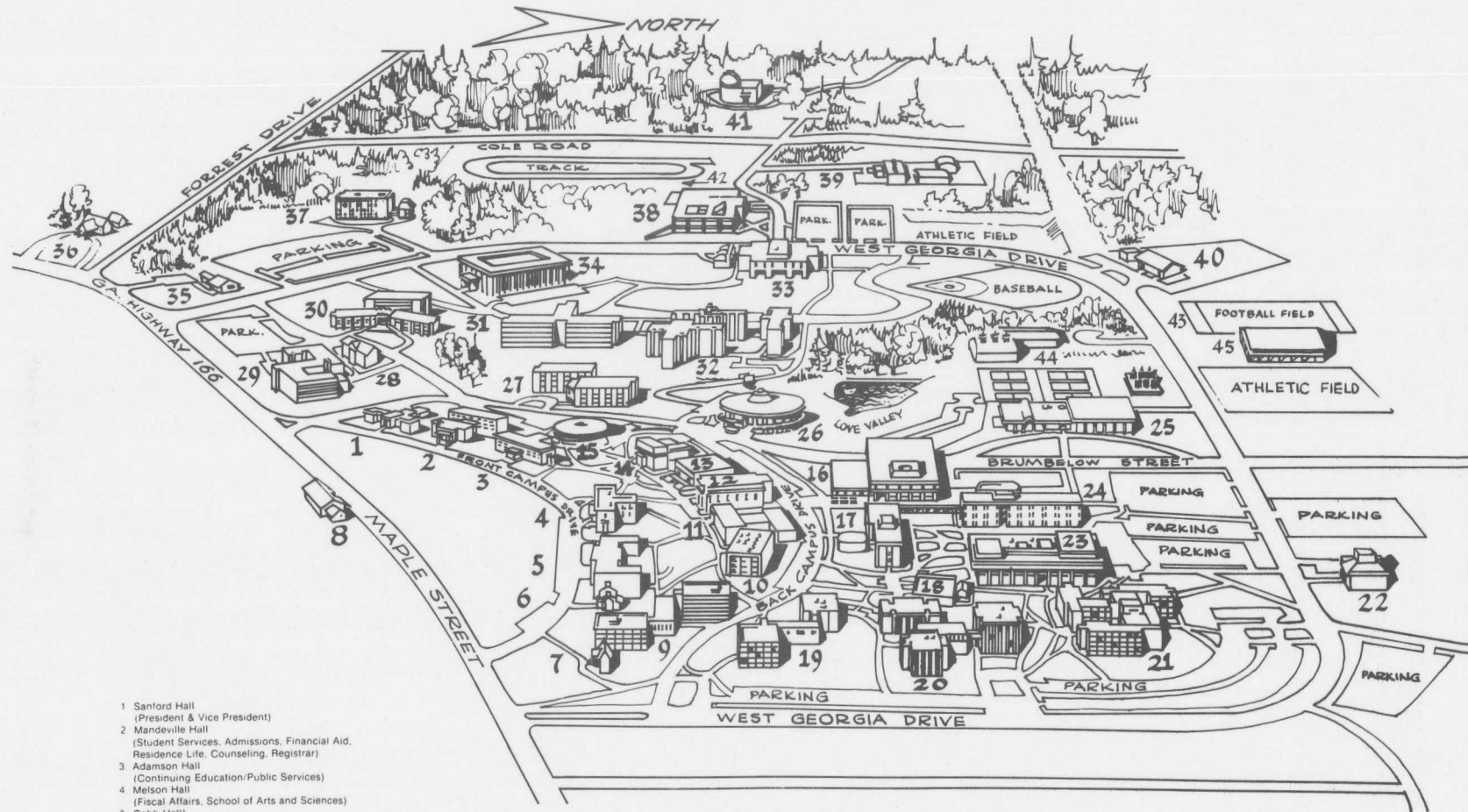
Adjacent to the Education Center is the Biology-Chemistry Building, a facility completed in early 1973 and including numerous laboratories, classrooms, lecture halls, and the latest scientific equipment. Other new buildings in the area include a five-story residence hall that houses upperclassmen, graduate students, and married students; a three-structure plant operations compound; and a food service and activity center that went into operation winter quarter, 1976.

Eleven residence halls are located on the campus, including the five-story high rise hall mentioned above. One of the newest halls, Bowdon Hall, was opened in the fall of 1971 and was named in honor of Bowdon College, a predecessor of West Georgia College.

Two of the oldest structures on campus are the Kennedy Interfaith Chapel and the Bonner House. The Kennedy Chapel was named in memory of the late President John F. Kennedy. The chapel, once owned by the Episcopal Church and the Catholic Church, was given to the College for interdenominational use. It was dedicated by the late Robert F. Kennedy in 1966. The Bonner House, constructed in 1843, is the oldest building on campus. Because of its historical nature, the house was selected by the Georgia Historical Commission as the site for a marker outlining the history of the College. The Bonner House was the center of a restoration project completed in 1977 and now serves as a Visitor Center for the campus.

SOURCE: WGC Undergraduate Catalog, 1981-82

CAMPUS MAP



- 1 Sanford Hall
(President & Vice President)
- 2 Mandeville Hall
(Student Services, Admissions, Financial Aid,
Residence Life, Counseling, Registrar)
- 3 Adamson Hall
(Continuing Education/Public Services)
- 4 Melson Hall
(Fiscal Affairs, School of Arts and Sciences)
- 5 Cobb Hall*
- 6 Thomas Bonner House
(Visitors' Center)
- 7 John F. Kennedy Memorial Chapel
- 8 Wesley Foundation
- 9 Gunn Hall*
- 10 Callaway Building
- 11 School of Business Building
- 12 Auditorium
- 13 Geography-Learning Resources Center
- 14 Martha Munro Building
- 15 Health Center
- 16 Library
- 17 Math-Physics Building
(Computer Center)

18. Visual Arts Annex
19. Boykin Hall*
20. Downs Hall*
21. Bowdon Hall*
22. Baptist Student Center
23. Humanities Building
(Kathy Cashen Hall)
24. Social Science Building
25. Physical Education Building

26. Student Center
(Student Activities, Post Office, Bookstore,
student offices)
27. Row Hall*
28. Aycock Hall
(Public Safety)
29. Watson Hall*
30. Strozier Hall & Annex*
31. Pritchard Hall*

32. Roberts Hall*
33. Biology-Chemistry Building
34. Education Center
(School of Education)
35. Alumni House
36. President's Home
37. Tyus Hall*
38. Food Services Building
39. Shackelford Building
(Plant Operations)

40. Landscaping & Grounds
41. Observatory
42. Start of Fitness Trail
43. Football Practice Field
44. Football Field House
45. Pavilion

*residence halls

WEST GEORGIA COLLEGE
Carrollton, Georgia

Administration



THE UNIVERSITY SYSTEM OF GEORGIA

1981/82

BOARD OF REGENTS

Rufus B. Coody, Vienna
State-at-Large

Marie W. Dodd, Roswell
State-at-Large

Jesse Hill, Jr., Atlanta
State-at-Large

O. Torbitt Ivey, Jr., Augusta
State-at-Large

John E. Skandalakis, Atlanta
State-at-Large

Erwin A. Friedman, Savannah
First District

William T. Divine, Jr., Albany
Second District

John H. Robinson, III, Americus
Third District

Scott Chandler, Jr., Albany
Fourth District

Eldridge W. McMillan, Atlanta
Fifth District

Lamar R. Plunkett, Bowdon
Sixth District

Lloyd L. Summer, Jr., Rome
Seventh District

Thomas H. Frier, Sr., Douglas
Eighth District

Sidney O. Smith, Jr., Gainesville
Ninth District

Julius F. Bishop, Athens
Tenth District

OFFICERS AND STAFF

Marie W. Dodd
*Chairman**

O. Torbitt Ivey, Jr.
*Vice Chairman**

Vernon Crawford
*Chancellor**

H. Dean Propst
*Vice Chancellor**

Henry G. Neal
*Executive Secretary**

Shealy E. McCoy
Vice Chancellor
*Fiscal Affairs/Treasurer**

Frank C. Dunham
Vice Chancellor
Facilities

Ray Cleere
Vice Chancellor
Academic Affairs

Robert M. Joiner
Vice Chancellor
Public Relations &
Information Services

Howard Jordan, Jr.
Vice Chancellor
Services

Thomas F. McDonald
Vice Chancellor
Student Services

Harry B. O'Rear
Vice Chancellor
Health Affairs

Haskin R. Pounds
Vice Chancellor
Research & Planning

Robert J. Cannon
Assistant Vice Chancellor
Affirmative Action

James L. Carmon
Assistant Vice Chancellor
Computing Systems

Wanda K. Cheek
Assistant Vice Chancellor
Planning

Gordon M. Funk
Assistant Vice Chancellor
Fiscal Affairs - Accounting Systems

Mary Ann Hickman
Assistant Vice Chancellor
Academic Development

H. Guy Jenkins, Jr.
Assistant Vice Chancellor
Facilities

Thomas E. Mann
Assistant Vice Chancellor
Facilities

Roger Mosshart
Assistant Vice Chancellor
Fiscal Affairs - Budgets

Charles R. Sanders
Assistant Vice Chancellor
Planning

Jacob H. Wamsley
Assistant Vice Chancellor
Fiscal Affairs

*Officers of the Board

SOURCE: WGC Undergraduate Catalog, 1981-82

WEST GEORGIA COLLEGE

1981/82

OFFICERS OF GENERAL ADMINISTRATION

Maurice K. Townsend
President

James E. Boyd
President Emeritus

Ward B. Pafford
President Emeritus

John T. Lewis, III
Vice President/Dean of Faculties

Kenneth C. Batchelor
Vice President for Business & Finance

Bruce W. Lyon
Dean of Student Services

Tracy P. Stallings
Director of College Relations

Richard A. Folk
Director of Instructional & Research Services

ACADEMIC OFFICERS

Benjamin W. Griffith
Dean of the Graduate School

Richard L. Dangle
Dean of the School of Arts & Sciences

J. Mark Miller
Dean of the School of Business

Evelyn R. Fulbright
Dean of the School of Education

ADMINISTRATIVE STAFF OFFICERS

Charles E. Beard
Director of Libraries

Annie Belle Weaver
Director of Libraries Emeritus

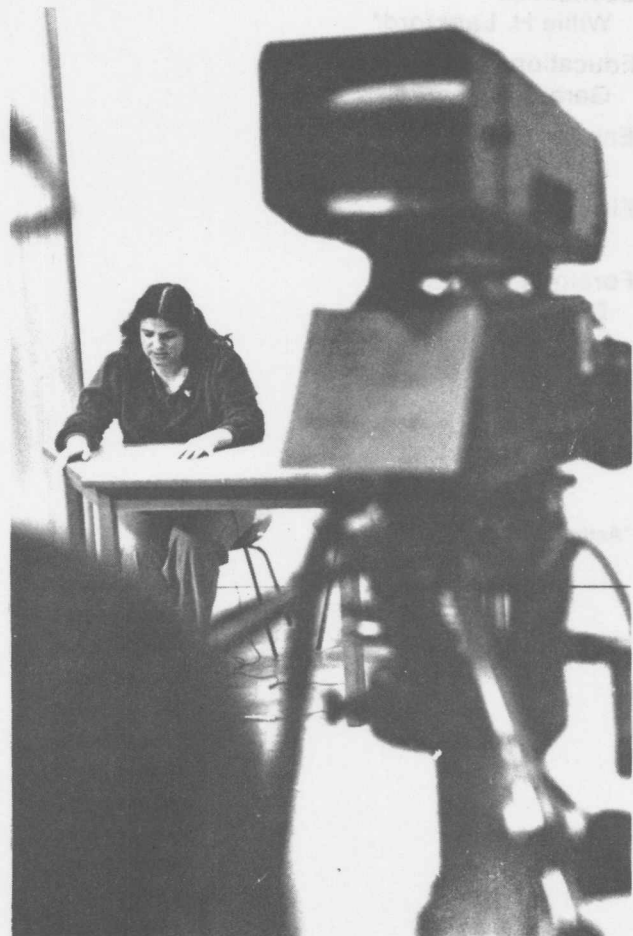
C. Doyle Bickers
Director of Admissions

Joseph D. Doldan
Director of the Computer Center

Gordon E. Finnie
Registrar

Elizabeth Parker
Registrar Emeritus

Stephen C. McCutcheon
*Director of Continuing Education
and Public Services*



SOURCE: WGC Undergraduate Catalog, 1981-82

DEPARTMENTS OF INSTRUCTION & CHAIRMEN

Accounting & Finance

Paul D. Baker

Administrative Systems & Business

Education

Donald L. Crawford

Art

J. Bruce Bobick

Biology

Edward E. Gilbert

Chemistry

William L. Lockhart

Counseling & Educational Psychology

Arthur L. Sanders

Developmental Studies & Testing

Charles E. Wilson

Early Childhood Education

Verl M. Short

Economics

Willie H. Lankford*

Educational Leadership

Gerard F. Lentini

English

James W. Mathews

Fine Arts

Robert M. Coe

Foreign Languages

Douglas R. Hilt

Geography

James R. O'Malley*

Geology

C. Sumner Long

History

Albert S. Hanser

Marketing & Management

Frank R. Hunsicker

Math & Computer Science

Chatty R. Pittman

Media

Gerard F. Lentini

Middle Grades & Reading

George H. McNinch

Nursing

Jeanette C. Bernhardt

Philosophy

David J. Higgins

Physical Education & Recreation

Thomas W. Leaming

Physics

Herman W. Boyd

Political Science

Donald T. Wells

Psychology

Myron M. Arons

Secondary Education

Edna Earl Edwards

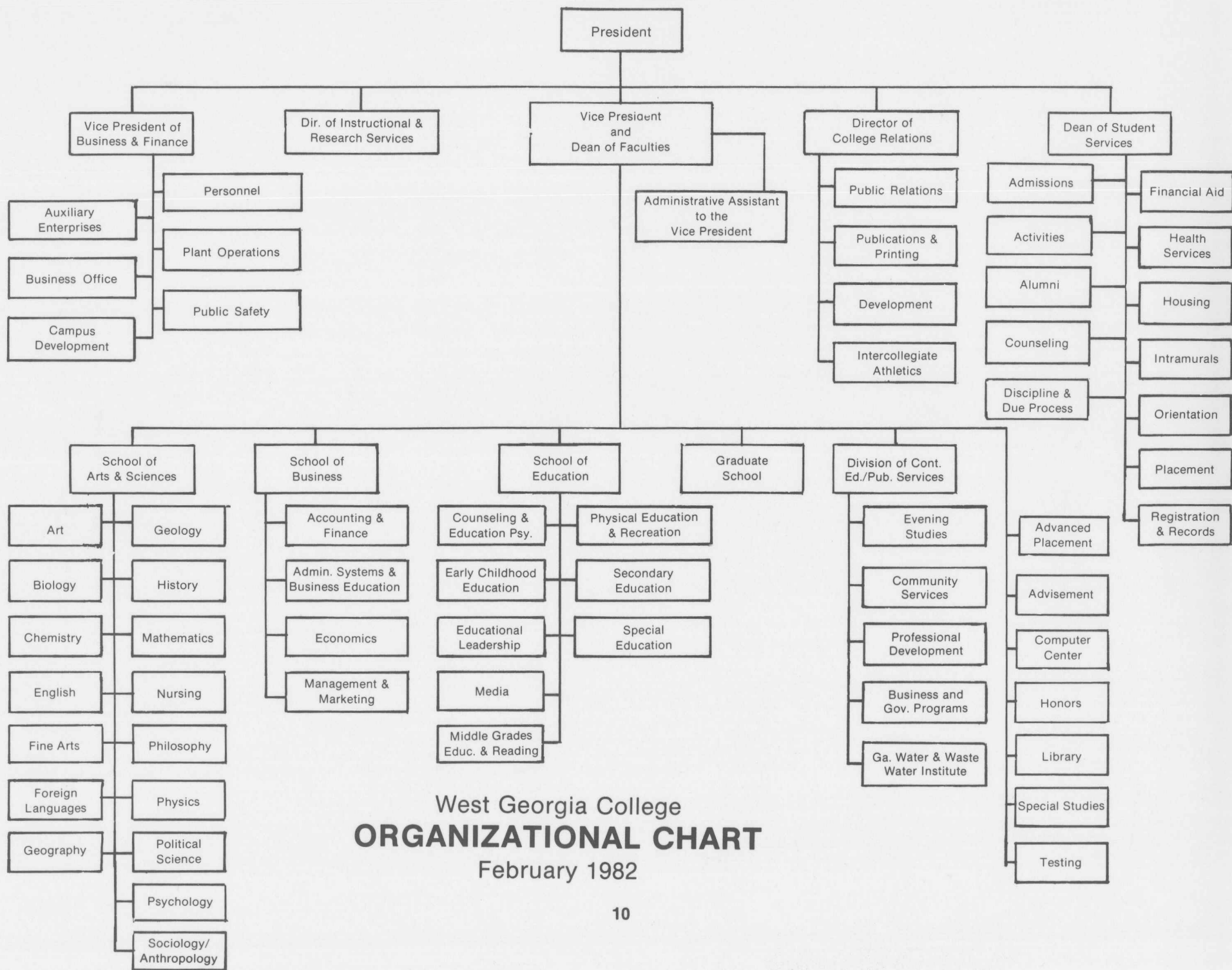
Sociology/Anthropology

William T. Simons

Special Education

William C. Moeny

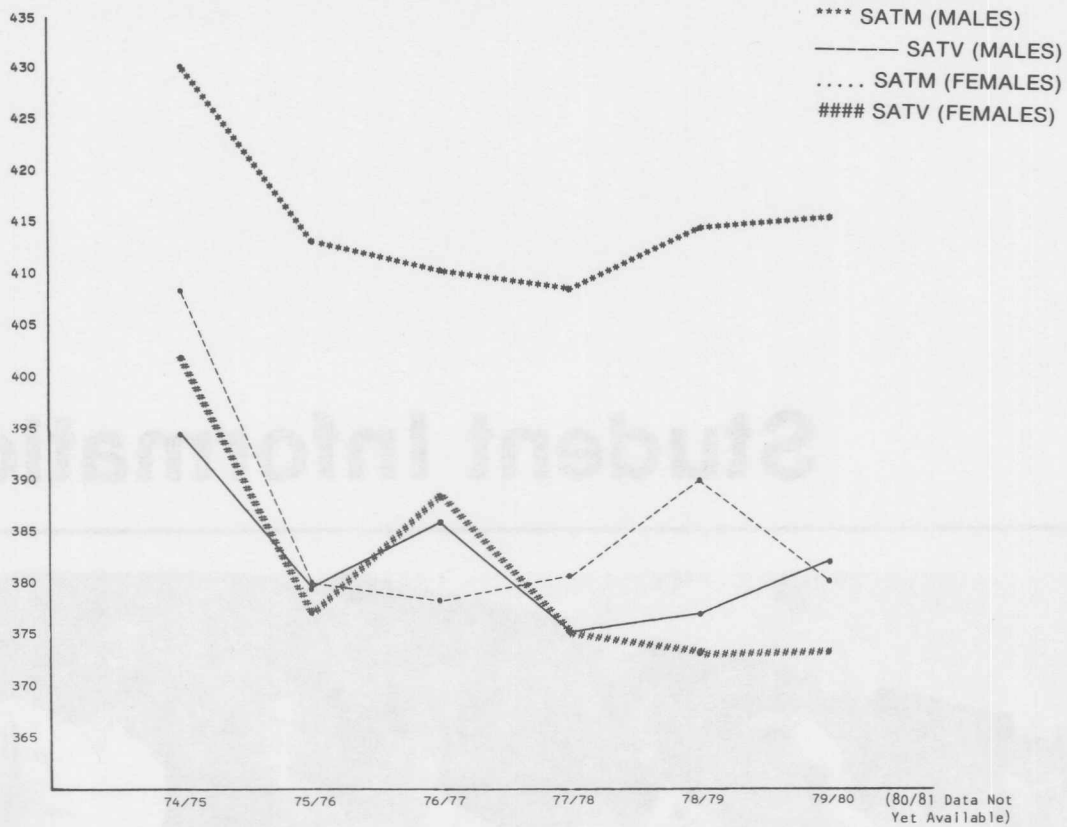
*Acting Chairmen



Student Information

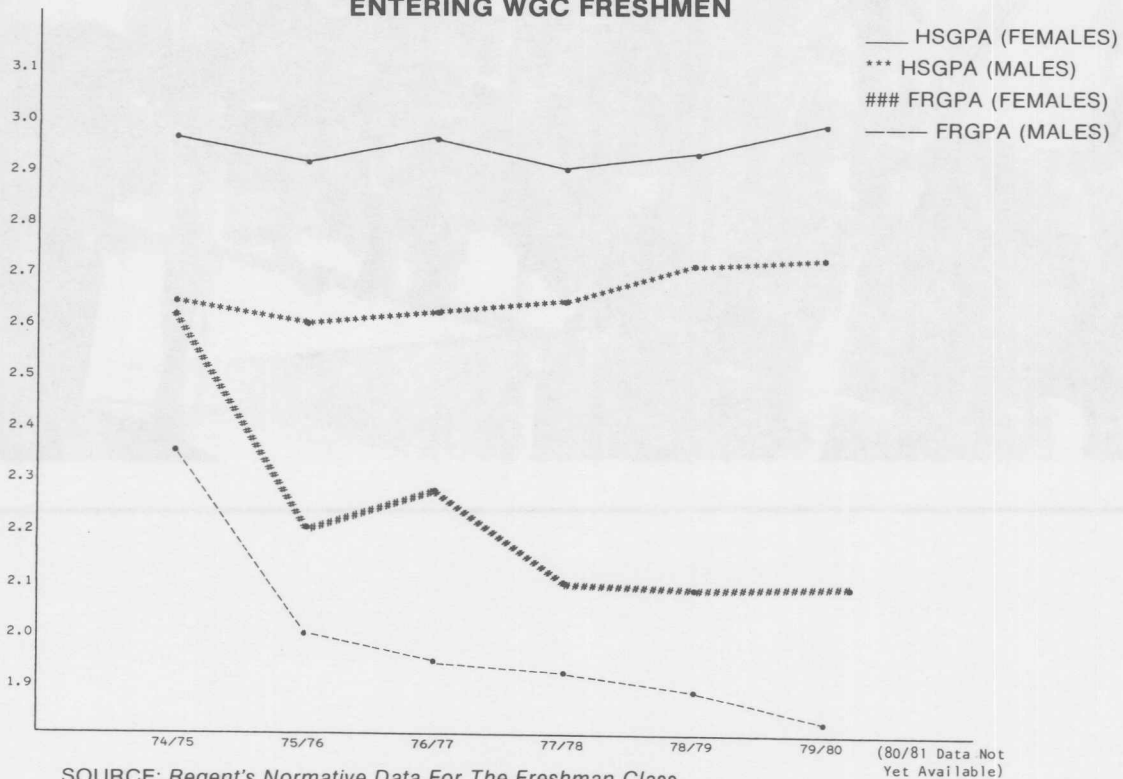


SAT SCORES OF ENTERING WGC FRESHMEN



SOURCE: Regent's Normative Data For The Freshman Class

HIGH SCHOOL AND FRESHMAN GRADE POINT AVERAGES OF ENTERING WGC FRESHMEN

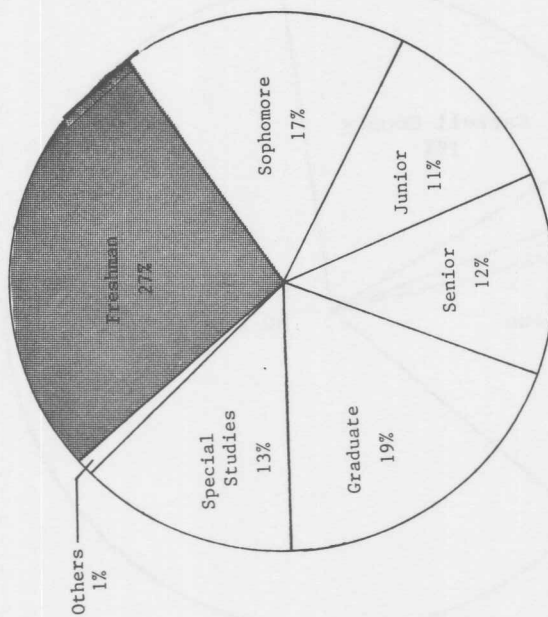


SOURCE: Regent's Normative Data For The Freshman Class

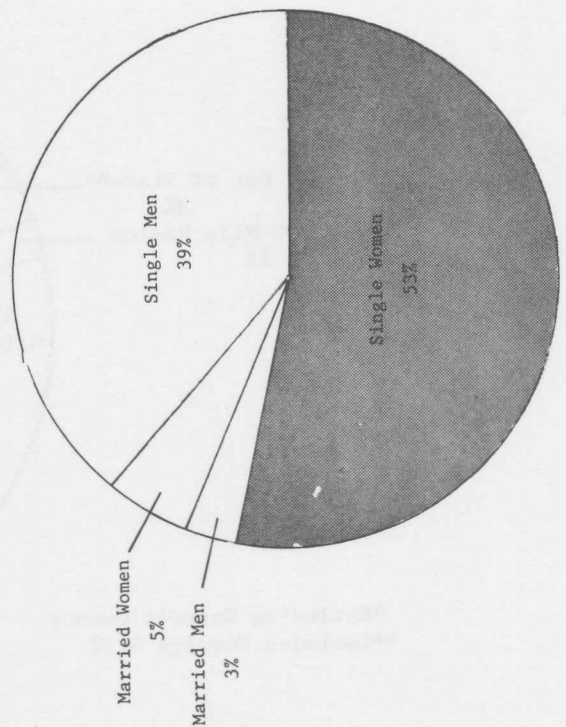
West Georgia College

COMPOSITION OF STUDENT BODY

Fall 1981



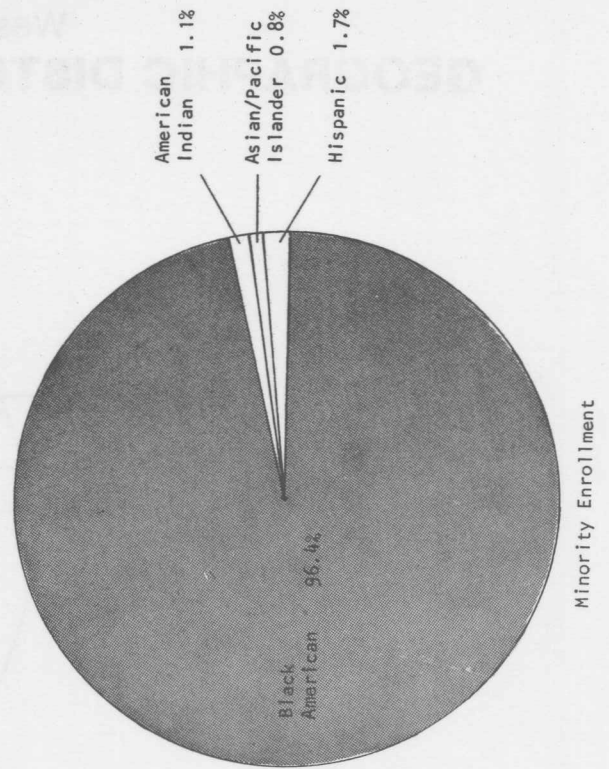
Enrollment By Classification



Enrollment By Sex & Marital Status

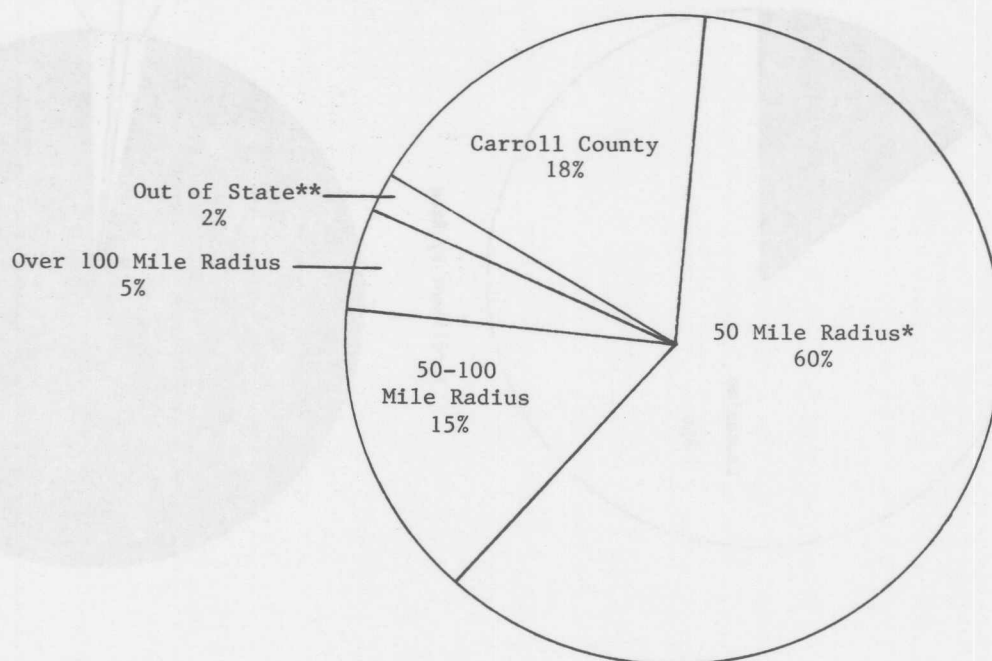


Enrollment By Race

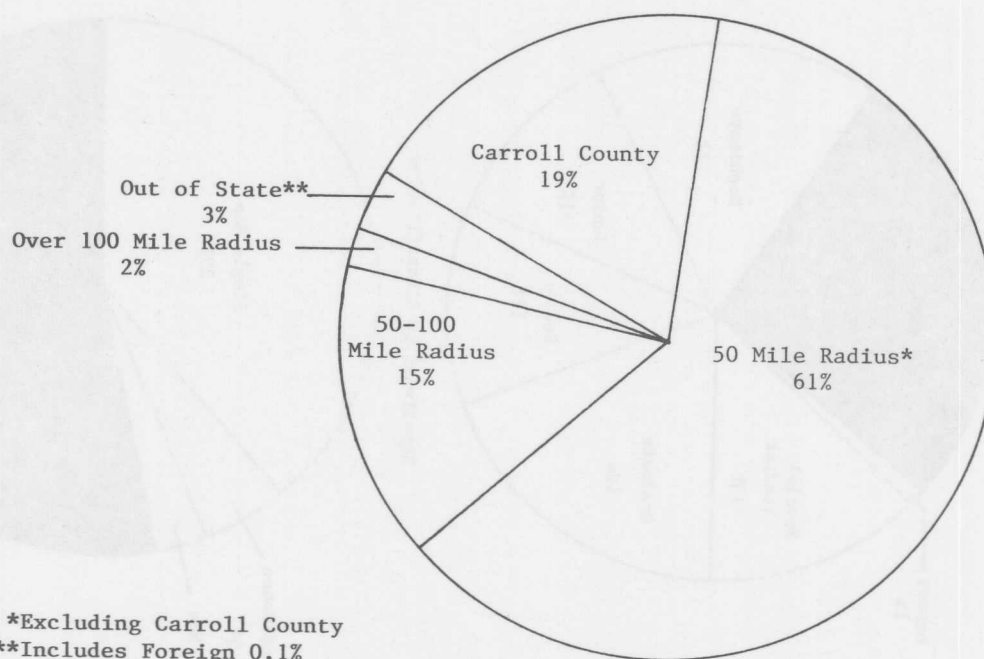


Minority Enrollment

West Georgia College
GEOGRAPHIC DISTRIBUTION OF STUDENT BODY
 Fall 1981



Undergraduate Students



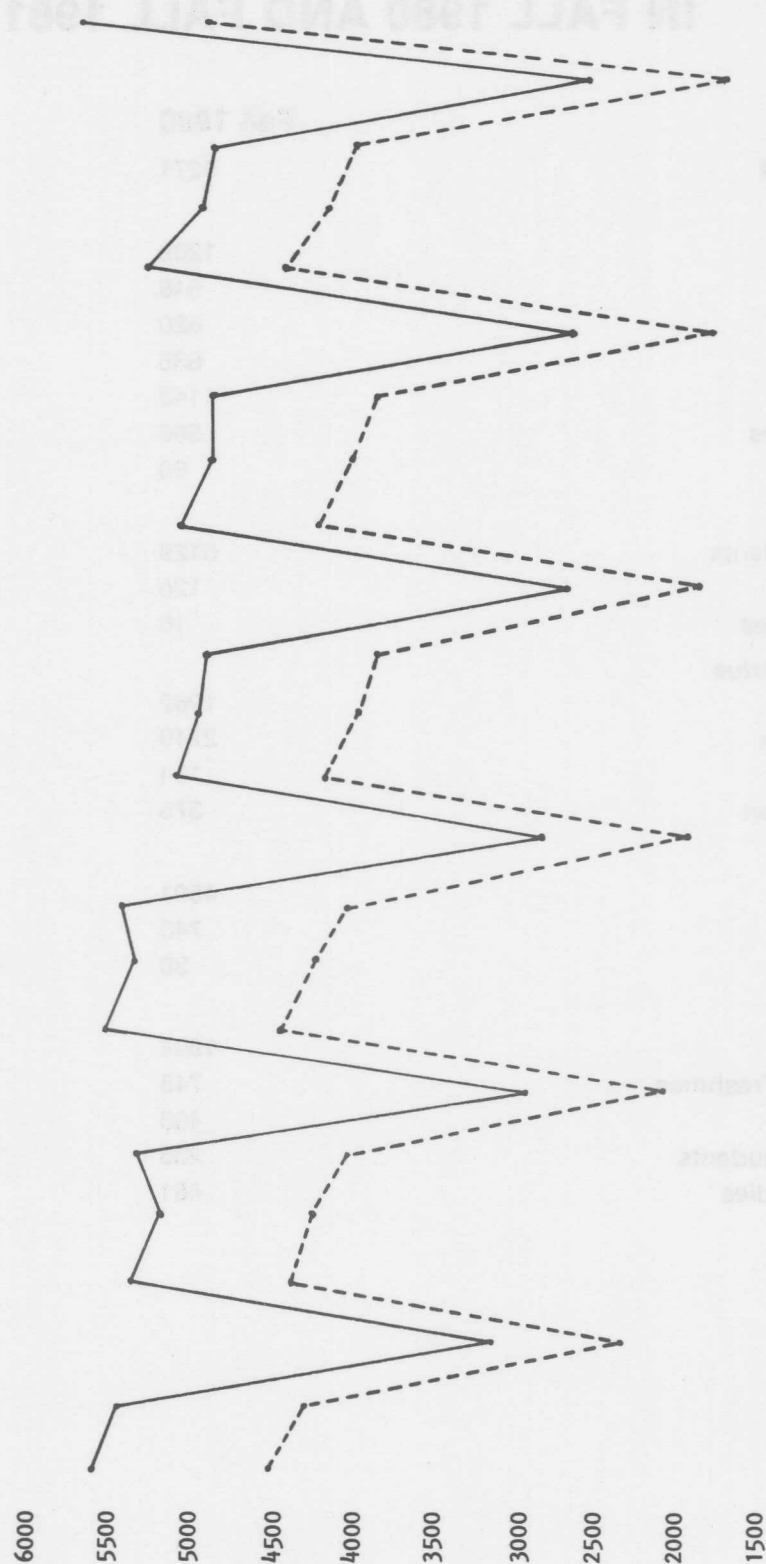
*Excluding Carroll County
 **Includes Foreign 0.1%

Graduate Students

DETAILED COMPOSITION OF WGC STUDENT BODY IN FALL 1980 AND FALL 1981

	Fall 1980	Fall 1981
Total Enrollment	5271	5660
Classification		
Freshman	1289	1537
Sophomore	946	936
Junior	620	649
Senior	638	695
Graduate	1143	1054
Special Studies	566	713
Others	69	76
Geographic		
Georgia Residents	5129	5501
Out-of-State	126	135
Other Countries	16	24
Sex & Marital Status		
Single Men	1962	2228
Single Women	2740	2974
Married Men	194	149
Married Women	375	309
Racial Mix		
Whites	4501	4819
Blacks	740	811
Others	30	30
New Students		
Total	1894	2154
Beginning Freshmen	745	931
Transfers	403	390
Graduate Students	285	266
Special Studies	461	567

HISTORICAL FREQUENCY CHART OF WGC ENROLLMENT & FULL TIME EQUIVALENTS



W SP SU F W SP SU F W SP SU F W SP SU F W SP SU F W SP SU F

HEADCOUNT —
FTE ----

TABLE OF WGC ENROLLMENT & FULL TIME EQUIVALENTS WITH PERCENT OF ANNUAL CHANGE

Year	Headcount	% +(-)	FTE*	% +(-)
1976				
Winter	5,581		4,518	
Spring	5,482		4,297	
Summer	3,177		2,357	
Fall	5,366		4,374	
1977				
Winter	5,203	(6.8)	4,259	(5.7)
Spring	5,293	(3.4)	4,080	(5.1)
Summer	2,972	(6.5)	2,115	(10.3)
Fall	5,536	3.2	4,477	2.4
1978				
Winter	5,339	2.6	4,254	(0.1)
Spring	5,440	2.8	4,080	--
Summer	2,810	(5.5)	1,951	(7.8)
Fall	5,119	(7.5)	4,172	(6.8)
1979				
Winter	4,970	(6.9)	3,987	(6.3)
Spring	4,896	(10.0)	3,847	(5.7)
Summer	2,696	(4.1)	1,857	(4.8)
Fall	5,051	(1.3)	4,229	1.4
1980				
Winter	4,817	(3.1)	4,031	1.1
Spring	4,815	(1.7)	3,864	0.4
Summer	2,638	(2.2)	1,792	(3.5)
Fall	5,271	4.4	4,431	4.8
1981				
Winter	4,917	2.1	4,152	3.0
Spring	4,882	1.4	3,992	3.3
Summer	2,546	(3.5)	1,694	(5.5)
Fall	5,660	7.4	4,884	10.2

*Based on 15 QCH as full load for each student upon census date of quarterly enrollment report.

West Georgia College
ADMISSIONS DATA: "NEW STUDENT" HISTORY
 Fall Quarters 1976-1981

	1976	1977	1978	1979	1980	1981
Total New Undergraduate Applicants	1858	2010	2107	2321	2623	3443
Total New Undergraduate Students Enrolled	1185	1340	1288	1372	1609	1888
Total New Transfer Applicants	471	481	471	508	652	683
Total New Transfer Students Enrolled	286	310	294	318	353	332
Total New Freshmen Applicants	1285	1424	1558	1758	1951	2690
Total New Freshmen Students Enrolled**	805	943	927	1010	1206	1498
Total New Developmental Studies Students Enrolled	229	291	431	416	461	567

**Figures include Developmental Studies freshmen and new transfer students required to take Developmental Studies courses.*

SOURCE: Admissions Office

HISTORY OF CONTINUING EDUCATION PROGRAMS FOR FISCAL YEARS 1976-1981

Year	Programs	Participants	CEUs
1975-76	140	4604	5128
1976-77	158	4643	6840
1977-78	220	4448	5952
1978-79	242	4382	5866
1979-80	215	3799	7351
1980-81	282	5031	7297

**Summary combines Category I programs (occupational related) and Category II programs (personal/social/cultural/recreational activities).*

SOURCE: Continuing Education Division

West Georgia College
**RETENTION RATES OF
 FALL QUARTER FRESHMAN CLASSES**

1974-1980

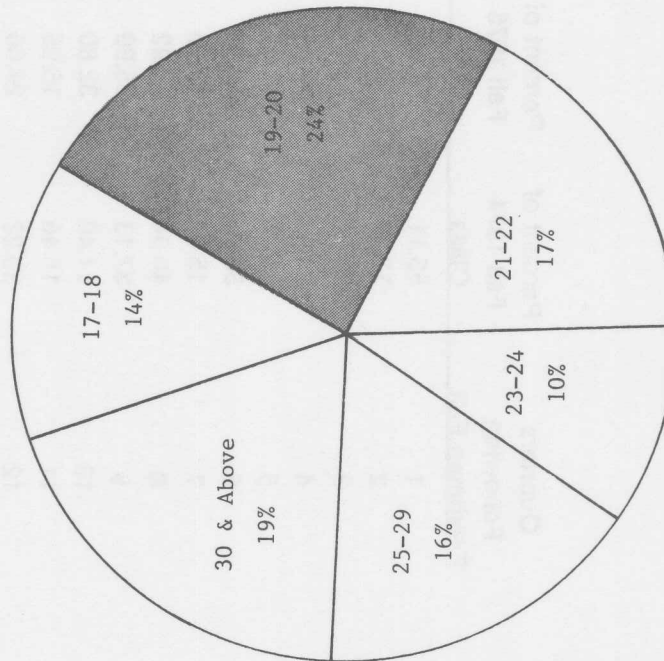
Quarters Following Freshman Fall	Percent of		Percent of		Percent of		Percent of		Percent of		Percent of	
	Fall 1974	Class	Fall 1975	Class	Fall 1976	Class	Fall 1977	Class	Fall 1978	Class	Fall 1979	Class
1	85.11		84.75		86.90		87.03		85.98		88.51	
2	77.76		79.34		78.07		76.41		77.32		80.64	
3	20.08		17.38		15.42		13.20		14.09		15.29	
4	60.41		59.84		58.82		51.88		57.09		53.05	
5	55.04		55.59		52.14		47.03		50.31		45.18	
6	50.33		50.98		47.33		42.81		47.72		42.36	
7	15.83		19.06		13.81		13.75		16.77		13.28	
8	40.34		38.92		36.45		32.11		37.72			
9	37.13		35.99		32.98		30.00		34.09			
10	34.40		32.80		30.12		29.38		32.36			
11	15.46		15.96		15.33		13.98		15.59			
12	29.22		26.06		25.40		25.39					
13	27.14		24.38		23.53		22.50					
14	25.07		22.16		22.37		21.41					
15	11.69		11.52		10.78		11.41					
16	15.36		13.03		13.37							
17	12.82		10.19		10.07							
18	11.03		9.04		9.36							
19	7.16		4.78		5.88							

Note: Each table entry represents the return rate for the indicated quarter following the initial Fall Quarter of attendance.

Example: For the Freshman Class of 1976, the return rate of Winter Quarter 1978 is 52.14% (the fifth quarter following Fall of entrance).

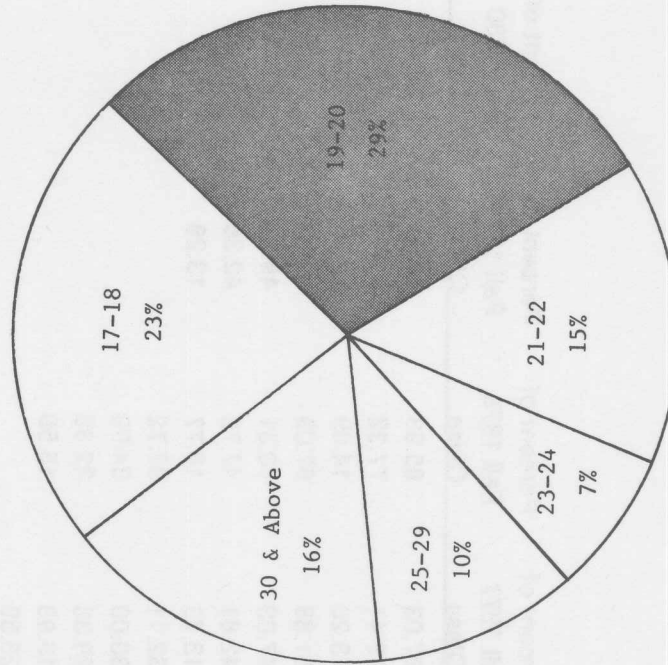
AGE DISTRIBUTION OF WGC STUDENTS

Fall 1976 — Fall 1981



Fall 1976

Note: For further detail
refer to table on page 21.



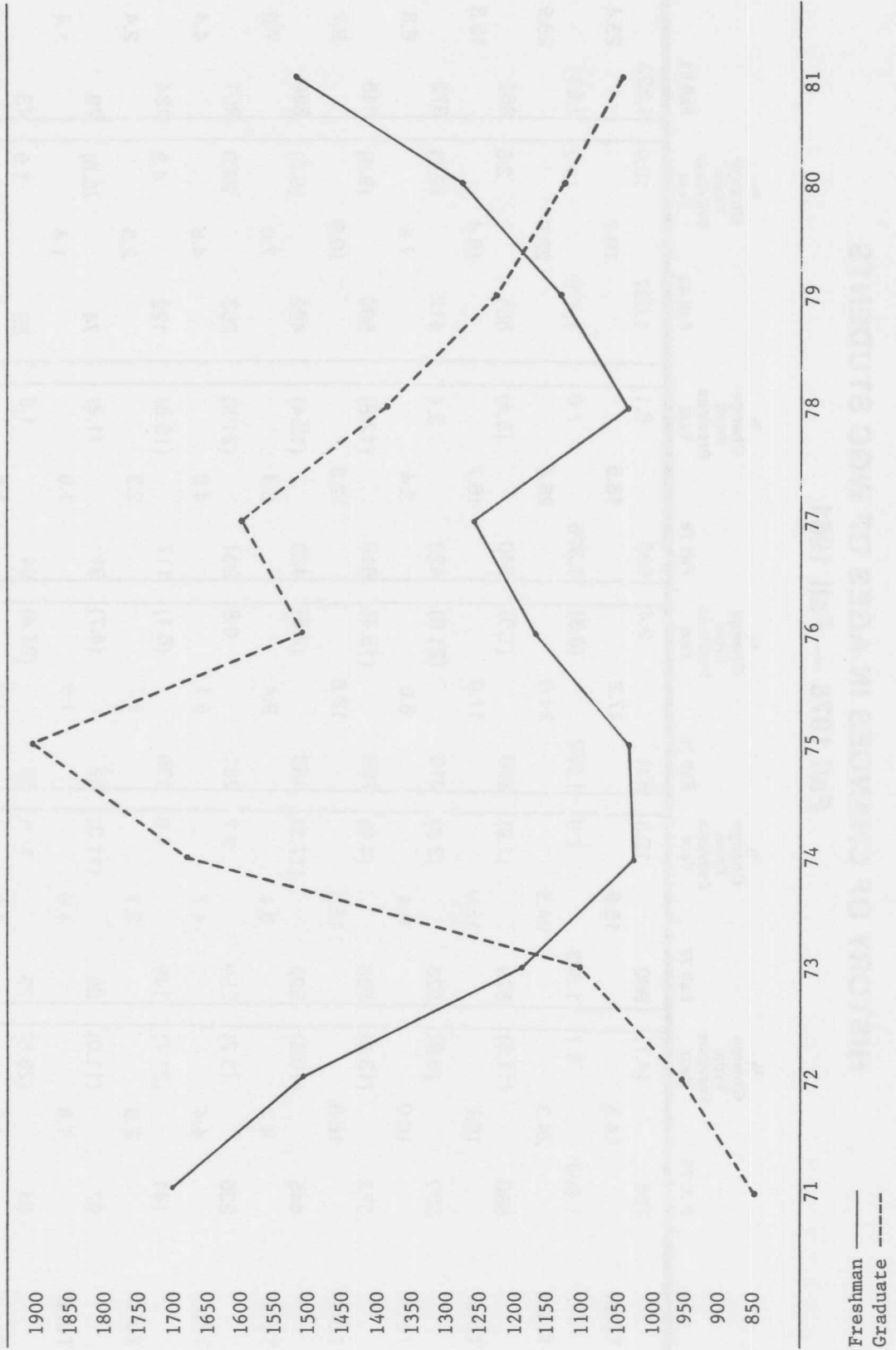
Fall 1981

HISTORY OF CHANGES IN AGES OF WGC STUDENTS

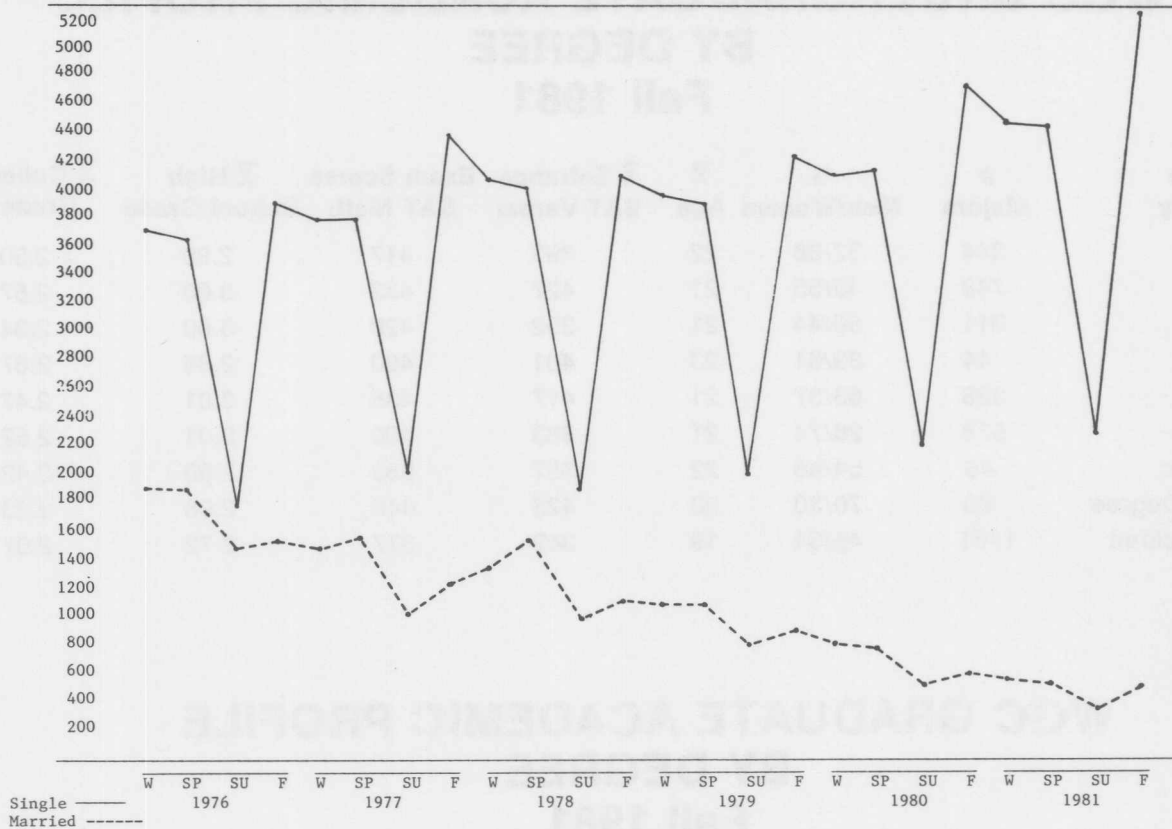
Fall 1976 — Fall 1981

Age	Fall 76	% Change From Previous Year	Fall 77	% Change From Previous Year	Fall 78	% Change From Previous Year	Fall 79	% Change From Previous Year	Fall 80	% Change From Previous Year	Fall 81	% Change From Previous Year
17-18	766	(4.7)	860	12.3	881	2.4	935	6.1	1,037	10.9	1,323	27.6
% Qtr. Total		14.3		15.5		17.2		18.6		19.7		23.4
19-20	1,306	5.1	1,343	2.8	1,232	(8.3)	1,326	7.6	1,475	11.2	1,631	10.6
% Qtr. Total		24.3		24.3		24.0		26.4		28.0		28.9
21-22	896	(11.5)	879	(1.9)	870	(1.0)	840	(3.4)	861	2.5	865	0.5
% Qtr. Total		16.7		15.9		17.0		16.7		16.4		15.3
23-24	539	(6.9)	523	(3.0)	413	(21.0)	423	2.4	412	(2.6)	373	(9.5)
% Qtr. Total		10.0		9.4		8.0		8.4		7.8		6.6
25-29	873	(13.8)	838	(4.0)	709	(15.4)	618	(12.8)	560	(9.4)	546	(2.5)
% Qtr. Total		16.3		15.1		13.8		12.3		10.6		9.7
30-34	445	(10.5)	522	(17.3)	483	(7.5)	423	(12.4)	402	(5.0)	398	(1.0)
% Qtr. Total		8.3		9.4		9.4		8.4		7.6		7.0
35-39	236	(5.2)	259	9.7	261	0.8	204	(21.8)	253	24.0	251	(0.8)
% Qtr. Total		4.4		4.7		5.1		4.0		4.8		4.4
40-44	141	(21.7)	148	5.0	139	(6.1)	117	(15.8)	122	4.3	134	9.8
% Qtr. Total		2.6		2.7		2.7		2.3		2.3		2.4
45-49	97	(11.0)	86	(11.3)	82	(4.7)	81	(1.2)	74	(8.6)	79	6.8
% Qtr. Total		1.8		1.6		1.6		1.6		1.4		1.4
50-59	64	(23.8)	73	14.1	53	(27.4)	54	1.9	55	1.9	43	(21.8)
% Qtr. Total		1.2		1.3		1.0		1.1		1.1		0.8
60 & above	4	(63.6)	4	0.0	9	125.0	11	22.2	14	27.3	7	(50.0)
% Qtr. Total		0.1		0.1		0.2		0.2		0.3		0.1
Average Age of Student Body		24.5		24.5		24.4		23.9		23.7		23.2

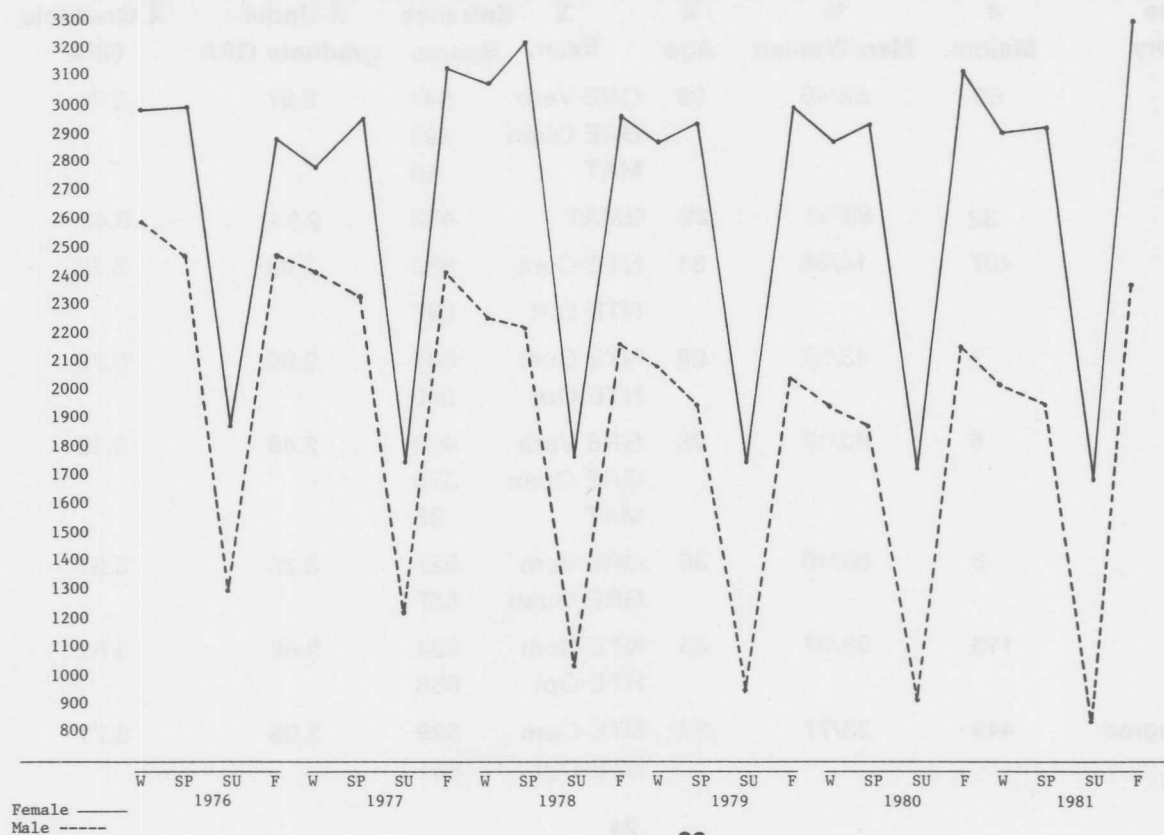
WGC FRESHMEN & GRADUATE ENROLLMENT FALL QUARTERS 1971-1981



WGC ENROLLMENT BY MARITAL STATUS



WGC ENROLLMENT BY SEX



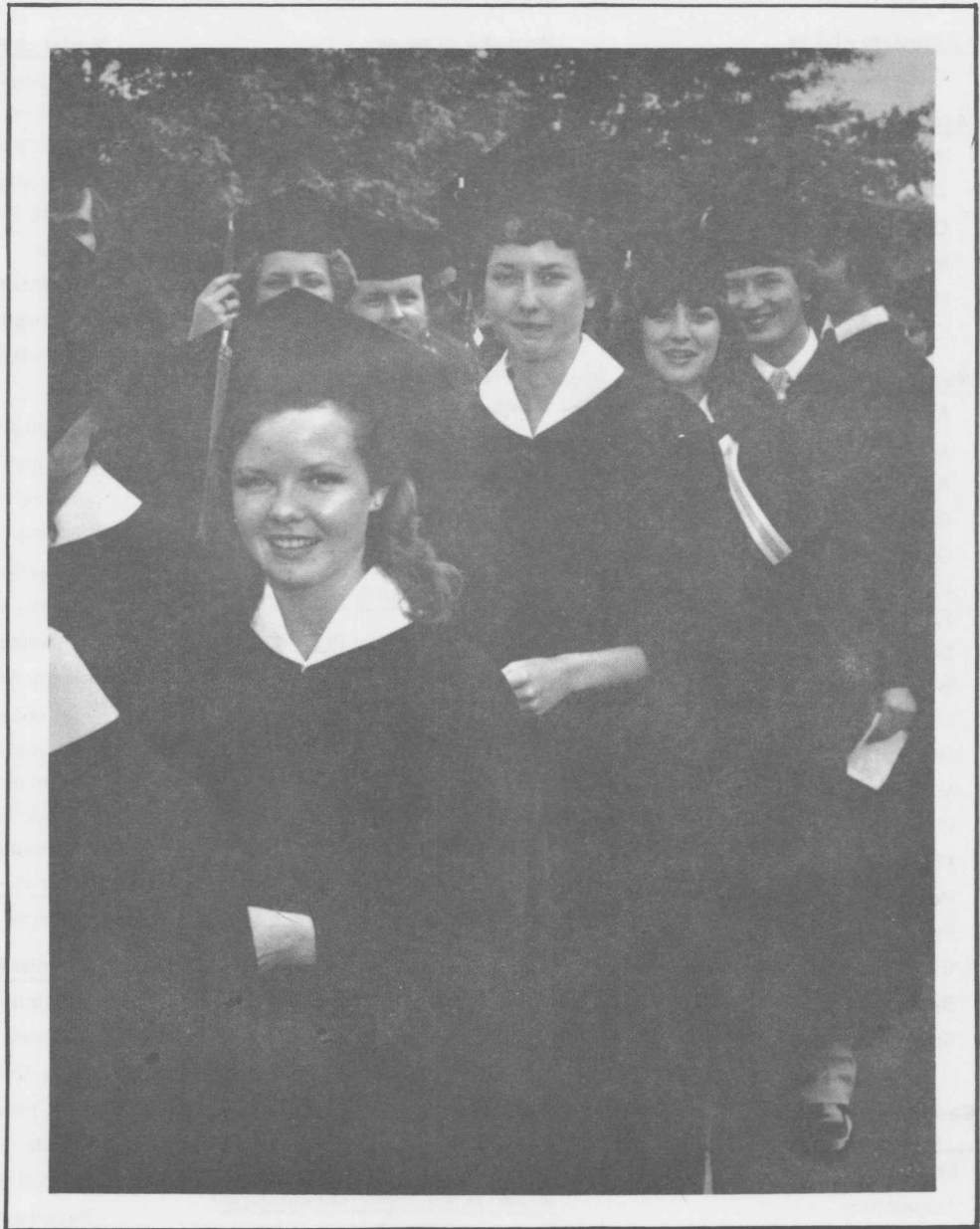
WGC UNDERGRADUATE ACADEMIC PROFILE BY DEGREE Fall 1981

Degree Category	# Majors	% Men/Women	\bar{X} Age	\bar{X} Entrance SAT Verbal	Exam Scores SAT Math	\bar{X} High School Grade	\bar{X} College Grades
AS	344	32/68	22	393	417	2.99	2.30
AB	749	45/55	21	427	433	3.00	2.57
BBA	911	56/44	21	392	420	3.00	2.34
BM	44	39/61	23	401	400	2.86	2.67
BS	328	63/37	21	417	435	3.01	2.47
BSEd	578	26/74	21	383	400	3.01	2.52
BSRec	46	54/46	22	357	383	2.99	2.42
Non-Degree	90	70/30	20	423	446	2.98	2.23
Undecided	1461	46/54	19	349	377	2.72	2.07

WGC GRADUATE ACADEMIC PROFILE BY DEGREE Fall 1981

Degree Category	# Majors	% Men/Women	\bar{X} Age	\bar{X} Exam Scores	\bar{X} Under-graduate GPA	\bar{X} Graduate GPA	
MA	66	52/48	29	GRE Verb	541	2.97	3.74
				GRE Quan	491		
				MAT	53		
MBA	32	69/31	29	GMAT	482	2.94	3.43
MED	407	14/86	31	NTE Com	589	2.93	3.73
				NTE Opt	627		
MM	7	43/57	28	NTE Com	587	2.90	3.73
				NTE Opt	600		
MPA	6	83/17	28	GRE Verb	460	2.46	3.19
				GRE Quan	376		
				MAT	33		
MS	5	60/40	30	GRE Verb	527	3.26	3.54
				GRE Quan	557		
EDS	115	33/67	35	NTE Com	634	3.68	3.82
				NTE Opt	666		
Non-degree	449	23/77	33	NTE Com	599	3.05	3.71
				NTE Opt	641		

Degree Information



West Georgia College
**DEGREES AND MAJORS AUTHORIZED BY
 THE BOARD OF REGENTS**
 Fall 1981

Associate of Arts

Education

Associate of Science

Accounting Technology

Computer Science

Criminal Justice

Marketing

Nursing

Office Administration

Bachelor of Arts

Art Education

Anthropology

Art

Biology

Chemistry

English

French

Geography

Geology

German

History

Mathematics

Philosophy

Physics

Political Science

Psychology

Sociology

Spanish

Speech & Theatre Art

**Bachelor of Business
Administration**

Economics

Accounting

Finance

Management

Marketing

Office Administration

Bachelor of Music

Music Education

Performance

Theory & Composition

Bachelor of Science

Economics

Biology

Chemistry

Criminal Justice

Geography

Geology

Mathematics

Physics

Political Science

Sociology

Bachelor of Science in Earth Science

Bachelor of Science in Education

Business Education

Early Childhood Education

Middle Grades Education

Physical Education

Special Education

Secondary Education

Social Science

Bachelor of Science in Recreation

Master of Arts

English

History

Mathematics

Psychology

Sociology

Master of Business Administration

Master of Music

Music Education

Performance

Master of Public Administration

Master of Education

Administration and Supervision

Business Education

Early Childhood Education

Guidance and Counseling

Middle Grades Education

Media

Physical Education

Reading Instruction

Secondary Education

Art

Biology

English

French

Mathematics

Science

Social Studies

Spanish

Special Education

Behavior Disordered

Educable Mentally Retarded

Interrelated

Specific Learning Disabled

Trainable Mentally Retarded

Master of Science

Biology

Specialist in Education

Administration and Supervision

Business Education

Early Childhood Education

Guidance and Counseling

Middle Grades Education

Special Education

Secondary Education

English

Math

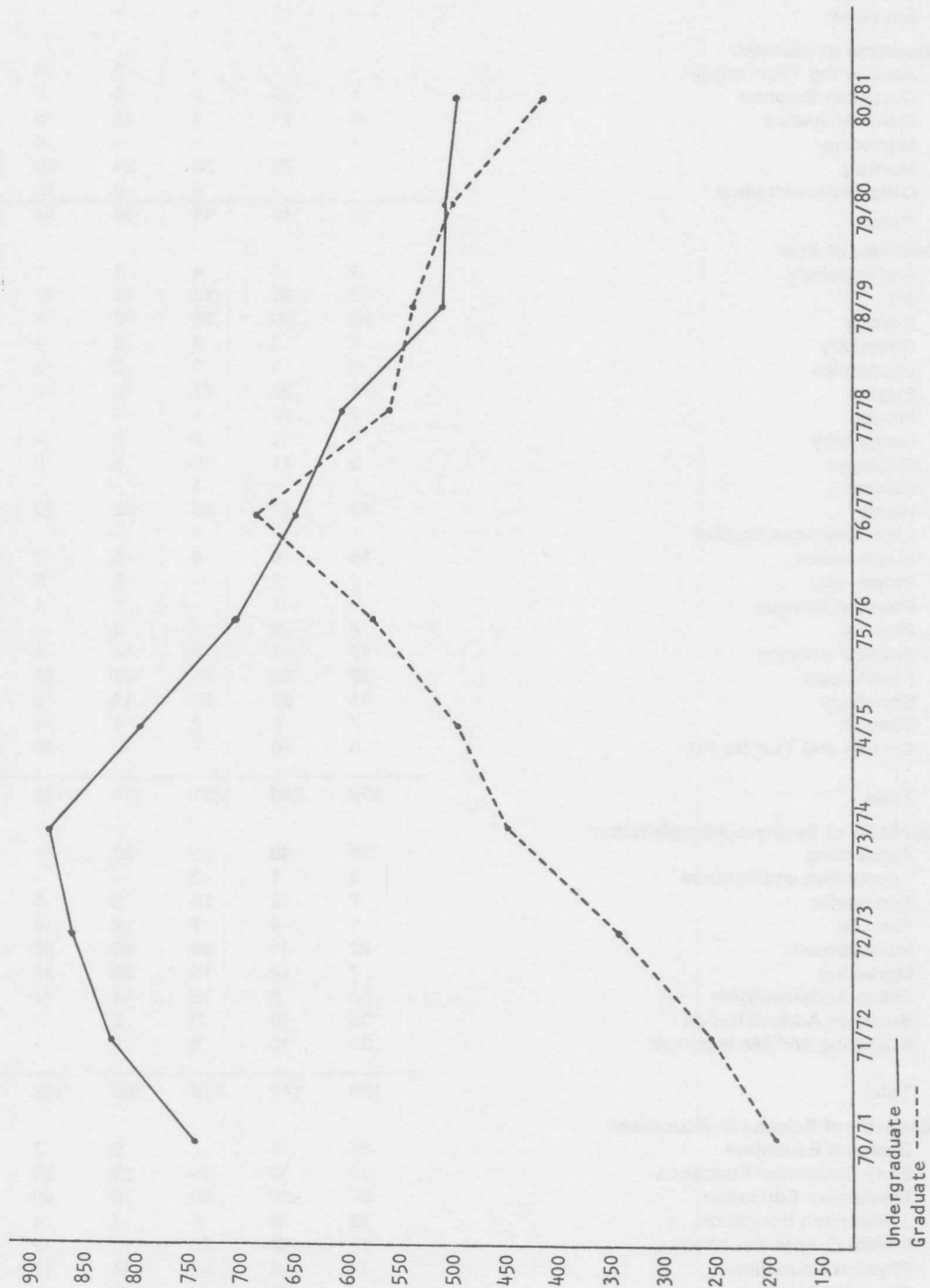
Science

Social Studies

West Georgia College

UNDERGRADUATE & GRADUATE DEGREES CONFERRED

1970/71 to 1980/81



WEST GEORGIA COLLEGE

DETAILED HISTORY OF DEGREES GRANTED

	74/75	75/76	76/77	77/78	78/79	79/80	80/81
Associate of Arts:							
Education	-	-	-	-	-	-	2
Associate of Science:							
Accounting Technology	-	-	-	2	3	1	-
Computer Science	1	3	7	6	5	5	13
Criminal Justice	9	11	4	17	5	4	5
Marketing	-	-	-	-	6	3	2
Nursing	-	26	28	24	26	23	22
Office Administration	-	-	4	9	12	5	6
Total	10	40	43	58	57	41	48
Bachelor of Arts:							
Anthropology	3	6	4	1	1	4	1
Art	30	26	13	15	12	8	8
Biology	26	30	26	12	5	14	12
Chemistry	4	2	3	8	4	-	3
Economics	6	-	2	2	1	1	-
English	27	25	21	16	12	10	13
French	2	4	-	1	1	-	2
Geography	2	1	2	2	5	7	2
Geology	8	11	10	9	5	10	7
German	1	-	1	-	-	1	-
History	43	41	23	22	20	16	16
Latin American Studies	1	-	-	-	-	-	-
Mathematics	16	4	8	8	7	3	3
Philosophy	2	2	-	2	6	-	1
Physical Science	-	1	-	1	1	-	-
Physics	2	2	1	2	-	-	-
Political Science	17	11	12	14	1	9	7
Psychology	52	52	41	37	29	29	34
Sociology	44	28	25	18	6	13	9
Spanish	7	4	2	1	4	3	1
Speech and Theatre Art	6	10	7	3	13	14	15
Total	299	260	201	174	133	142	134
Bachelor of Business Administration:							
Accounting	38	48	45	53	41	40	33
Accounting and Finance	5	1	2	-	-	-	-
Economics	7	12	15	6	5	2	5
Finance	1	4	7	2	6	5	5
Management	22	34	35	46	52	55	53
Marketing	7	12	15	28	24	24	40
Office Administration	18	8	12	14	14	12	7
Business Administration	33	10	3	2	-	-	-
Marketing and Management	35	18	6	4	-	-	-
Total	166	147	140	155	142	138	143
Bachelor of Science in Education:							
Business Education	16	7	7	9	7	1	5
Early Childhood Education	70	50	44	39	33	40	41
Elementary Education	57	39	52	36	42	34	-
Junior High Education	12	5	6	3	4	-	-
Middle Grades Education	17	16	20	18	12	14	6
Physical Education	17	16	20	18	12	14	6
Special Education	48	40	32	17	14	17	17
Total	220	157	161	122	112	106	94
Bachelor of Music:							
Music Education	-	-	-	-	-	4	3
Performance	8	8	10	15	4	4	-
Theory and Composition	-	-	-	-	-	1	-
Total	8	8	10	15	4	9	3

DETAILED HISTORY OF DEGREES *Continued*

	74/75	75/76	76/77	77/78	78/79	79/80	80/81
Bachelor of Science:							
Biology	-	-	-	-	-	-	5
Chemistry	3	1	2	1	-	-	-
Criminal Justice	-	-	-	-	3	15	14
Geography	14	13	16	13	2	6	7
Geology	-	-	-	-	-	3	4
Mathematics	-	-	-	-	-	-	2
Physics	2	2	2	3	3	-	2
Political Science	5	8	6	6	8	10	5
Political Science (Pre-Law)	-	-	-	2	6	-	-
Sociology	31	42	44	37	31	22	11
Total	55	66	70	62	53	56	50
Bachelor of Science in Earth Science:	3	2	1	3	1	1	-
Bachelor of Science in Medical Technology:	2	2	1	-	-	-	-
Bachelor of Science in Recreation:	29	20	21	15	8	16	17
Master of Arts:							
English	3	8	8	8	5	2	4
History	7	3	11	3	4	2	2
Mathematics	4	3	2	2	-	1	-
Psychology	72	79	100	112	84	92	45
Sociology	7	9	5	3	3	2	2
Total	93	102	126	128	96	99	53
Master of Business Administration:	9	5	15	15	13	17	8
Master of Education:							
Administration and Supervision	45	36	33	39	30	16	12
Business Education	11	11	19	10	10	6	7
Early Childhood Education	49	52	60	52	62	81	68
Elementary Education	86	127	146	102	88	67	-
Guidance and Counseling	35	43	53	57	32	28	31
Junior High Education	4	5	5	2	2	-	1
Middle Grades Education	-	-	-	-	-	-	50
Media	4	16	15	16	24	12	12
Physical Education	-	-	4	2	21	15	17
Reading Instruction	8	10	17	7	7	9	5
Secondary Education	66	68	64	50	42	50	35
Special Education	32	52	65	49	55	30	38
Total	340	420	481	386	373	314	276
Master of Music:							
Music Education	-	-	-	-	-	3	-
Performance	-	-	-	-	-	2	5
Total	-	-	-	-	-	5	5
Master of Science:							
Biology	8	4	1	2	5	3	2
Physics	-	1	-	-	-	-	-
Total	8	5	1	2	5	3	2
Specialist in Education:							
Administration and Supervision	8	8	17	13	10	16	20
Business Education	-	2	1	1	-	4	5
Early Childhood Education	1	3	2	2	3	8	5
Elementary Education	16	7	18	7	15	18	-
Guidance and Counseling	6	16	13	6	12	12	18
Middle Grades Education	-	-	-	-	-	-	9
Secondary Education	8	6	9	1	6	5	13
Total	39	42	60	30	46	63	70
Total Number of Degrees By Level							
Education Specialist	39	42	60	30	46	63	70
Masters	450	532	623	531	487	438	344
Bachelor	782	662	605	546	453	468	441
Associate	10	40	43	58	57	41	50
Total	1,281	1,276	1,331	1,165	1,043	1,010	905

 SOURCE: *President's Annual Reports, 1974/75 to 1980/81*

Faculty Information



WGC FACULTY PROFILE

DISTRIBUTION BY HIGHEST DEGREE, 1980/81

Category	Doctorates		Masters/ Education Specialist		Other**		Total N
	N	%	N	%	N	%	
Full-time Teaching Faculty*	125	63	68	35	4	2	197
General Administrators	7	88	1	12	-	-	8
Academic Administrators	30	86	5	14	-	-	35
Public Service	1	100	-	-	-	-	1
Librarians	-	-	9	100	-	-	9
Faculty on Leave	3	43	4	57	-	-	7
Part-Time Faculty	-	-	2	100	-	-	2
Other (F-T Faculty with Temporary Assignments)	1	12	5	63	2	25	8
Total	N 167	% 63	N 94	% 35	N 6	% 2	N 267

*Does not include full-time temporary appointments to fill positions for faculty on leave.

**Other includes Professional, Bachelors, and Miscellaneous Degrees.

WGC FACULTY PROFILE

DISTRIBUTION BY RANK, 1980/81

Category	Professor		Associate Professor		Assistant Professor		Instructor		Total N
	N	%	N	%	N	%	N	%	
Full-Time Teaching Faculty*	40	25	68	35	73	37	16	8	197
General Administrators	2	25	6	75	-	-	-	-	8
Academic Administrators	24	69	10	29	1	2	-	-	35
Public Service	-	-	1	100	-	-	-	-	1
Librarians	-	-	1	11	1	11	7	78	9
Faculty on Leave	2	28.5	-	-	3	43	2	28.5	7
Part-Time Faculty	-	-	-	-	-	-	2	100	2
Other (F-T Faculty with Temporary Appointments)	-	-	-	-	4	50	4	50	8
Total	N 68	% 25	N 86	% 32	N 82	% 31	N 31	% 12	N 267

*Does not include full-time temporary appointments to fill positions for faculty on leave.

SOURCE: 1980/81 Annual Report

WGC FACULTY PROFILE DISTRIBUTION BY TENURE STATUS, 1980/81

Category	Tenured		Non-Tenured		Total N
	N	%	N	%	
Full-Time Teaching Faculty*	116	59	81	41	197
General Administrators	7	88	1	12	8
Academic Administrators	30	86	5	14	35
Public Service	1	100	—	—	1
Librarians	1	11	8	89	9
Faculty On Leave	2	29	5	71	7
Part-Time Faculty	—	—	2	100	2
Other (F-T Faculty with Temporary Appointments)	—	—	8	100	8
Total	N 157	% 59	N 110	% 41	N 267

*Does not include full-time temporary appointments to fill positions for faculty on leave.

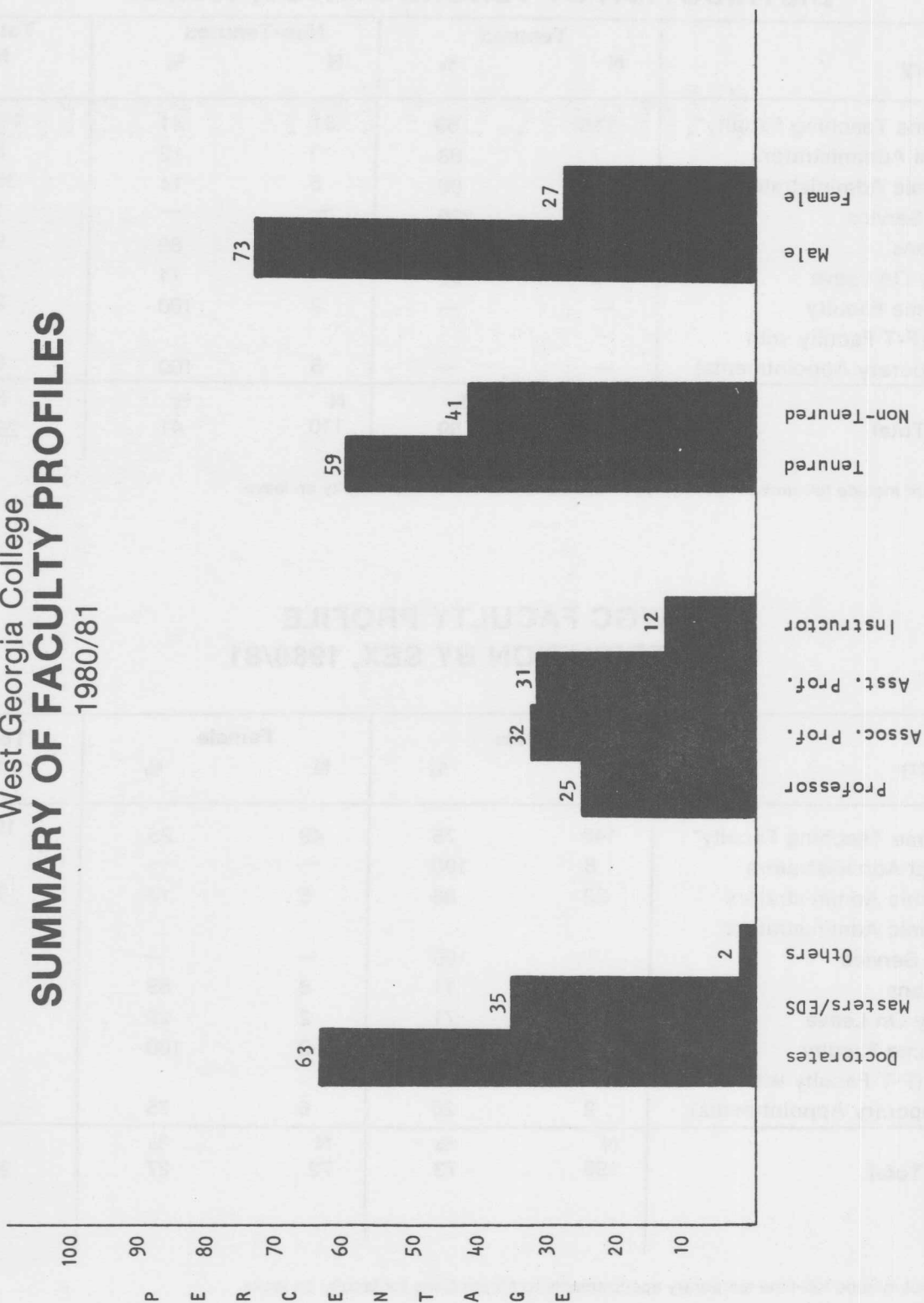
WGC FACULTY PROFILE DISTRIBUTION BY SEX, 1980/81

Category	Male		Female		Total N
	N	%	N	%	
Full-Time Teaching Faculty*	148	75	49	25	197
General Administrators	8	100	—	—	8
Academic Administrators	30	86	5	14	35
Academic Administrators					
Public Service	1	100	—	—	1
Librarians	1	11	8	89	9
Faculty On Leave	5	71	2	29	7
Part-Time Faculty	—	—	2	100	2
Other (F-T Faculty with Temporary Appointments)	2	25	6	75	8
Total	N 195	% 73	N 72	% 27	N 267

*Does not include full-time temporary appointments to fill positions for faculty on leave.

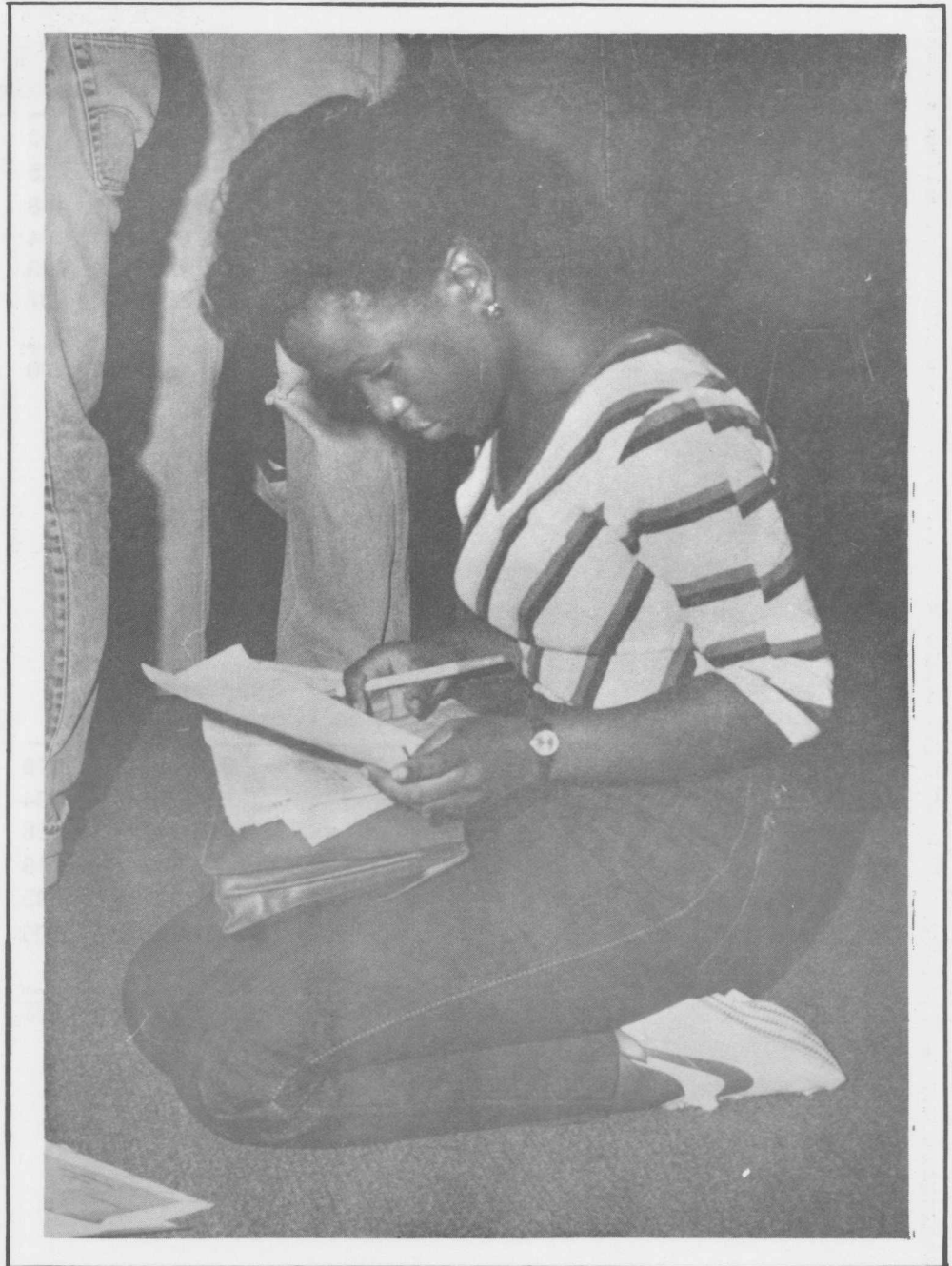
SOURCE: 1980/81 Annual Report

West Georgia College
SUMMARY OF FACULTY PROFILES
 1980/81



SOURCE: President's Annual Report, 1980/81

Financial Information



WEST GEORGIA COLLEGE BUDGET ALLOCATIONS*

Fiscal Year 1981

	Total FY 81	Supplies & Expense	Travel	Equipment	Personal Services
Instruction	7,426,504	433,324	109,533	114,867	6,768,780
Research ⁺	144,592	20,707	5,625	260	118,000
Academic Support	1,284,188	196,238	24,148	327,403	736,399
Student Services	723,265	69,677	16,144	12,973	624,471
Institutional Support	2,574,336	466,791	16,633	29,180	2,061,732
Operations & Mtn. of Plant	1,965,659	930,673	1,907	52,257	980,822
Scholarships & Fellowships	164,047	164,047			
Total	14,282,591	2,281,457	173,990	536,940	11,290,204

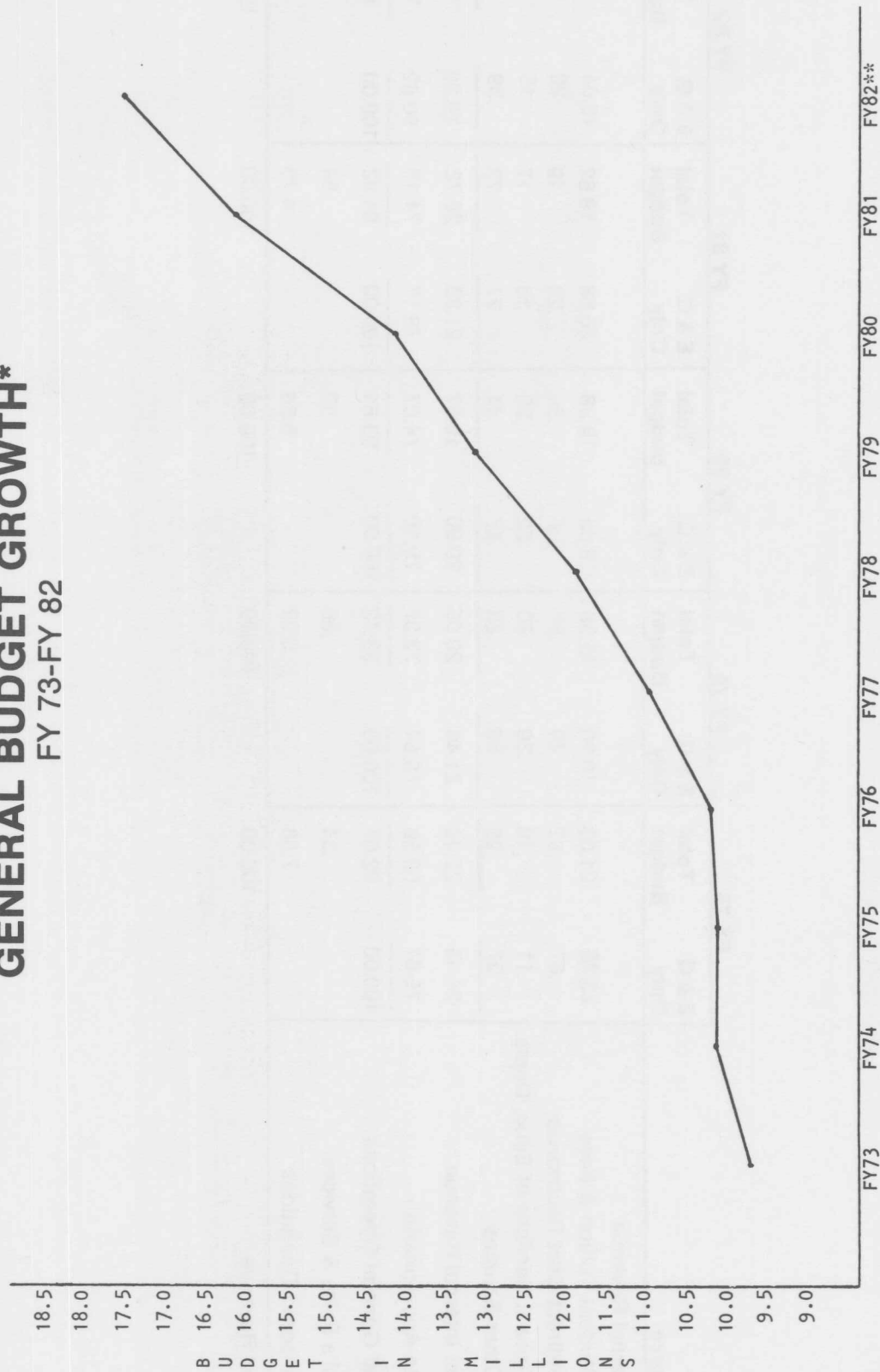
Fiscal Year 1980

	Total FY 80	Supplies & Expenses	Travel	Equipment	Personal Services
Instruction	6,893,741	399,249	104,949	141,898	6,247,645
Research ⁺	188,439	31,978	13,394	823	142,244
Academic Support	1,051,885	226,114	9,928	181,401	634,442
Student Services	603,992	60,877	12,019	6,638	524,458
Institutional Support	2,163,002	427,022	15,193	27,977	1,692,810
Operations & Mtn. of Plant	1,696,891	802,012	1,205	45,239	848,435
Scholarships & Fellowships	143,745	143,745			
Total	12,741,695	2,090,997	156,688	403,976	10,090,034

*For Educational and General Expenditures

+ 'Research' totals include all sponsored research expenditures.

West Georgia College **GENERAL BUDGET GROWTH*** FY 73-FY 82



*Combines Auxiliary Enterprises with E & G Expenditures (except sponsored operations and departmental sales and services).

**FY 82 represents original budget figures.

SOURCE: Budget Office/Youngblood

West Georgia College
PERCENT DISTRIBUTION OF REVENUE BY SOURCE
 FY 1978—FY 1982

Source	FY 78		FY 79		FY 80		FY 81		FY 82	
	E & G Only	Total Budget	E & G Only	Total Budget	E & G Only	Total Budget	E & G Only	Total Budget	E & G Only	Total Budget
Internal Revenue										
Student Tuition & Fees	23.38	21.53	19.90	18.59	19.85	18.58	20.68	19.62	18.64	17.33
Indirect Cost Recoveries	.67	.62	.40	.37	.36	.34	.20	.19	.20	.19
Sales & Services of Educ. Depts.	.11	.10	.30	.30	.22	.20	.18	.17	.15	.14
Other Sources	.27	.25	.86	.80	.47	.44	.77	.73	.39	.36
Total Internal Revenue	24.43	22.49	21.46	20.05	20.90	19.57	21.83	20.72	19.38	18.02
State Appropriation	75.67	69.58	78.54	73.37	79.10	74.07	78.17	74.19	80.62	74.93
Total General Operations	100.00	92.07	100.00	93.42	100.00	93.64	100.00	94.92	100.00	92.95
Dept's Sales & Services		.34		.56		.50		.54		.50
Sponsored Operations		7.58		6.02		5.86		4.73		6.55
Total Revenue		100.00		100.00		100.00		100.00		100.00

SOURCE: Budget Office/McWhorter

West Georgia College

PERCENT DISTRIBUTION OF EXPENDITURES BY FUNCTION

FY 78 — FY 82

Function	FY 78			FY 79			FY 80			FY 81			FY 82		
	E & G Only	Total Budget		E & G Only	Total Budget		E & G Only	Total Budget		E & G Only	Total Budget		E & G Only	Total Budget	
Instruction															
School of Arts & Sciences	28.45	28.24		31.00	29.28		31.39	29.73		30.29	28.82		31.95	29.80	
School of Business	6.41	5.99		6.88	6.46		6.94	6.53		7.06	6.73		7.03	6.53	
School of Education	17.07	18.39		13.76	13.86		12.10	12.51		11.69	11.29		13.99	13.00	
Other Instruction	2.43	3.06		2.69	3.42		4.49	4.84		4.26	5.16		1.52	1.32	
Total Instruction	54.36	55.68		54.33	53.02		54.92	53.61		53.30	52.00		54.49	50.65	
Research	.11	.10		.08	1.64		.09	1.48		.09	1.01		.08	.07	
Academic Support	9.76	9.05		9.20	8.68		8.74	8.26		9.47	8.99		8.71	8.10	
Student Services	4.01	3.71		4.59	4.32		5.03	4.74		5.17	5.06		5.32	4.94	
Institutional Support	15.76	16.68		15.62	16.56		16.56	16.98		17.44	18.02		17.84	16.58	
Operation & Maintenance of Plant	15.71	14.52		16.18	15.21		14.15	13.32		14.45	13.76		13.56	12.61	
Scholarships & Fellowships	N/A	N/A		N/A	N/A		N/A	N/A		N/A	1.13			1.15	
Total Expenditures	100.00	100.00		100.00	100.00		100.00	100.00		100.00	100.00		100.00	100.00	

West Georgia College
E & G EXPENDITURES PER FTE STUDENT
 FY 78 — FY 82

	FY 78	FY 79	FY 80	FY 81	FY 82*
Total Quarter Credit Hours	223,993	209,503	209,716	215,511	213,598
Cumulative FTE Enrollment	14,932.87	13,966.87	13,981.07	14,367.40	14,239.87
Total E & G Expense	\$10,405,708	\$11,391,505	\$11,931,175	\$13,529,151	\$14,895,200
Quarterly Expenditure per FTE	\$696.83	\$815.61	\$853.38	\$941.66	\$1,046.02

*FY 82 based on original budget.

West Georgia College
AVERAGE SALARY BY EMPLOYEE CATEGORY
 FY 78 — FY 82

	<u>Total Employees</u>				
	FY 78	FY 79	FY 80	FY 81	FY 82
Faculty	265 \$15,408	260 \$17,045	251 \$18,941	239 \$21,103	242 \$23,019
Administrative Staff	64 \$18,207	70 \$19,496	74 \$20,779	77 \$22,930	82 \$24,345
Clerical Staff	127 \$7,213	135 \$7,823	139 \$8,751	140 \$9,708	148 \$10,851
Maintenance	140 \$7,301	146 \$8,064	147 \$8,861	153 \$9,711	158 \$10,843

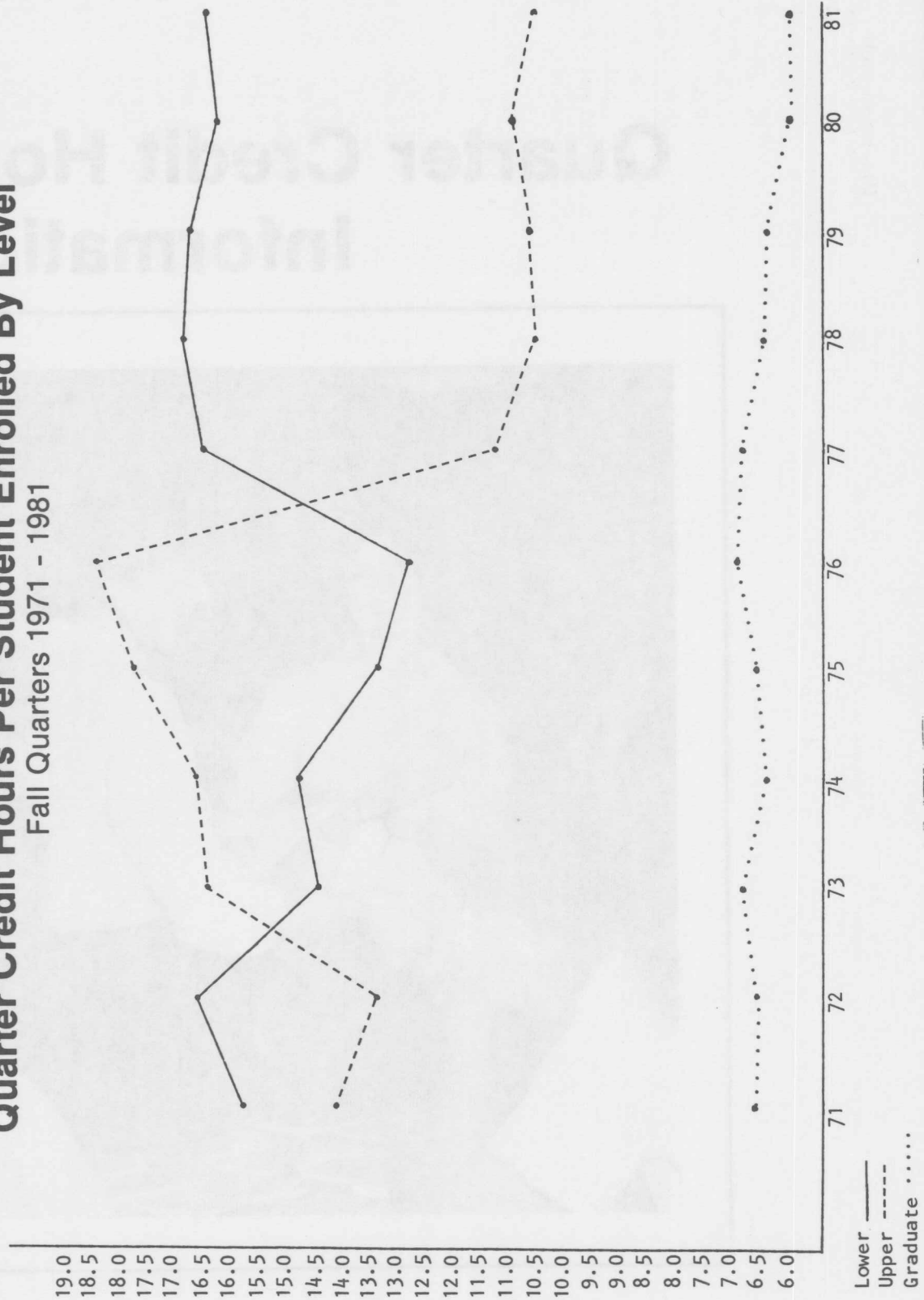
	<u>Faculty</u>				
	FY 78	FY 79	FY 80	FY 81	FY 82
Professor	53 \$20,522	57 \$21,720	57 \$24,054	59 \$26,555	66 \$28,821
Associate Professor	82 \$16,829	84 \$17,882	80 \$19,919	77 \$22,173	70 \$24,115
Assistant Professor	97 \$13,675	91 \$14,927	88 \$16,886	79 \$18,138	76 \$19,946
Instructor	32 \$10,546	28 \$11,903	23 \$13,196	24 \$14,027	30 \$15,484

SOURCE: Budget Office/McWhorter

Quarter Credit Hour Information



West Georgia College
Quarter Credit Hours Per Student Enrolled By Level
 Fall Quarters 1971 - 1981



West Georgia College
DETAILED ENROLLMENT AND QCH HISTORY
 FY 1976-FY 1982

	Lower Level				Upper Level				Graduate Level			
	<u>Enrollment</u>	<u>Q.C.H.</u>	<u>Avg. Q.C.H.</u>		<u>Enrollment</u>	<u>Q.C.H.</u>	<u>Avg. Q.C.H.</u>		<u>Enrollment</u>	<u>Q.C.H.</u>	<u>Avg. Q.C.H.</u>	
FY 76												
Summer 1975	634	8,241	13.0		947	13,300	14.0		1,967	19,249	9.8	
Fall 1975	2,257	30,334	13.4		1,494	26,560	17.8		1,912	12,688	6.6	
Winter 1976	2,131	28,346	13.3		1,466	26,589	18.1		1,837	12,831	7.0	
Spring 1976	1,870	23,649	12.6		1,507	27,228	18.1		1,981	13,578	6.9	
FY 77												
Summer 1976	543	7,277	13.4		832	10,981	13.2		1,724	17,103	9.9	
Fall 1976	2,370	30,355	12.8		1,336	24,759	18.5		1,520	10,500	6.9	
Winter 1977	2,175	28,922	13.3		1,351	24,331	18.0		1,540	10,639	6.9	
Spring 1977	1,896	24,209	12.8		1,426	24,717	17.3		1,838	12,286	6.7	
FY 78												
Summer 1977	587	7,165	12.2		765	10,394	13.6		1,518	14,166	9.3	
Fall 1977	2,503	41,631	16.6		1,296	14,642	11.3		1,606	10,882	6.8	
Winter 1978	2,153	36,811	17.1		1,427	16,160	11.3		1,656	10,842	6.5	
Spring 1978	1,918	32,666	17.0		1,411	15,573	11.0		2,010	12,968	6.5	
FY 79												
Summer 1978	464	8,610	18.6		730	6,310	8.6		1,545	14,349	9.3	
Fall 1978	2,385	40,326	16.9		1,238	13,098	10.6		1,400	9,155	6.5	
Winter 1979	2,104	36,215	17.2		1,301	14,103	10.8		1,483	9,482	6.4	
Spring 1979	1,883	32,392	17.2		1,321	14,646	11.1		1,629	10,665	6.5	
FY 80												
Summer 1979	449	8,695	19.4		731	6,316	8.6		1,454	12,839	8.8	
Fall 1979	2,506	42,186	16.8		1,240	13,322	10.7		1,243	7,933	6.4	
Winter 1980	2,265	38,846	17.2		1,306	14,221	10.9		1,189	7,392	6.2	
Spring 1980	2,024	34,971	17.3		1,390	14,592	10.5		1,356	8,403	6.2	
FY 81												
Summer 1980	544	9,662	17.8		746	6,413	8.6		1,301	10,811	8.3	
Fall 1980	2,801	45,694	16.3		1,258	13,874	11.0		1,143	6,901	6.0	
Winter 1981	2,433	40,700	16.7		1,308	14,766	11.3		1,119	6,817	6.1	
Spring 1981	2,119	36,286	17.1		1,402	15,351	10.9		1,308	8,236	6.3	
FY 82												
Summer 81	559	9,428	16.9		757	6,277	8.3		1,178	9,712	8.2	
Fall 1981	3,186	52,619	16.5		1,344	14,294	10.6		1,054	6,352	6.0	

WGC HEADCOUNT RELATIVE TO FTE AND QCH HISTORY FALL 1971 - FALL 1981

<u>Fall</u>	<u>Headcount</u>	<u>FTE*</u>	<u>Total QCH</u>
1971	6,114	5,649	84,739
1972	5,735	5,196	77,936
1973	5,201	4,566	68,487
1974	5,524	4,438	66,521
1975	5,803	4,639	69,582
1976	5,366	4,374	65,614
1977	5,536	4,477	67,155
1978	5,119	4,172	62,579
1979	5,051	4,229	63,441
1980	5,271	4,431	66,469
1981	5,660	4,884	73,265

*15 QCH = full time



Research



West Georgia College

DISTRIBUTION OF GRANTS AND CONTRACTS AWARDED

Fiscal Year 1981

	# Proposals Submitted	Amount Requested	# Proposals Awarded	Amount Awarded
School of Arts & Sciences				
Research	16	343,802	8	106,569
Instruction	5	38,639	3	20,794
School of Business				
Instruction	3	31,774	1	6,000
School of Education				
Instruction	5	38,685	5	38,685
Institutional				
Public Service	3	175,541	3	175,541
Instruction	3	1,639,422	2	195,000
COLLEGE TOTALS	35	2,267,863	19	542,589*

*Includes three grants which were applied for in FY 81, but notifications of award came after June 30, 1981.
SOURCE: *President's Annual Report, 1980-81.*

West Georgia College
FACULTY RESEARCH GRANTS
 Fiscal Year 1981

Grant #	Amount	Name/Department	Grant Title
81-01	\$ 220	Drs. Baker and Swanson Accounting and Finance	<i>High School Preparation and Subsequent Performance in Upper Division Accounting Courses</i>
81-02	\$ 220	Dr. Bruce Bobick Art Department	<i>A Non-Verbal Narrative Book Based Upon Symbolic Biological Imagery</i>
81-03	\$1000	Dr. Daniel Brantley Political Science	<i>Issue-Making Process and the Role of Third Parties</i>
81-04	\$2135	Dr. Glenn Esslinger Chemistry Department	<i>Ethanol Production from Plant Biomass</i>
81-05	\$ 825	Dr. John Ferling History Department	<i>A Biographical Study of George Washington</i>
81-06	\$1075	Dr. Spencer Hamada Biology Department	<i>The Enzymatic Hydrolysis of Cellulose to Alcohol Using New Mutant Strain of Trichoderma Ressei</i>
8107	\$ 115	Drs. Hunsicker & Southern Management & Marketing	<i>A Comparative Study of the Motivation to Manage</i>
81-08	\$ 525	Drs. Masters & Vogel Political Science	<i>The International Relations of Churches: An Application of Chadwick Alger's Local Linkage Approach</i>
81-09	\$ 230	Drs. Scott & Boozer Economics Department	<i>Certified Public Accountants as a Source of Data on Small Businesses</i>
81-10	\$ 570	Dr. Thomas Sav Economics Department	<i>Econometric Estimation of Micro-Ex Ante Production and Cost Functions Using Pseudo Data: The Case of Solar Energy</i>
81-11	\$ 400	Dr. Karl Steinen Anthropology	<i>Mississippian Period Settlement Systems in the Etowah Valley: Mapping and Document Research</i>
81-12	\$1000	Dr. Johnny Waters Geology Department	<i>Evolution of Pentremites pulchellus in the Southern Appalachians</i>
81-13	\$2000	Dr. Walter Woods Management & Marketing	<i>Three Functions of consuming Behavior: Maintenance, Enhancement, Enjoyment</i>
81-14	\$ 600	WGC Review	

Alumni Association



WEST GEORGIA COLLEGE ALUMNI ASSOCIATION

Membership in the West Georgia Alumni Association is automatically conferred upon all individuals who attended West Georgia College, Bowdon College or the 4th District A&M School for at least three quarters and is available, upon request, to other former students.

The Association charges no dues, but does solicit contributions from alumni through the West Georgia College Annual Fund for the support of the College and the Association. All alumni are considered regular members of the Association.

Membership in the Association entitles an alumnus to receive the West Georgia College alumni newspaper, **Perspective**, as well as other communications regarding activities of the Association. The Association also provides a means by which alumni may make known to the College administration their opinions concerning present and future policies and practices of the College.

The Office of Alumni Services is responsible for maintaining up-to-date files on each alumnus, publishing the alumni newspaper, organizing reunions and caravans, encouraging alumni activity on the community level, and providing a variety of other services for alumni and friends of the College.

OFFICERS

David W. Harris, *President*

Tracy Teal, *Vice President*

Rodney Vollenweider, *Vice President*

Anna Cagle Harris, *Vice President*

Virginia Colquitt Almon, *Secretary*

Phyllis L. Fountain, *Development and Alumni Services*

WEST GEORGIA COLLEGE FOUNDATION

The West Georgia College Foundation, Inc., is a non-profit organization founded and operated for the benefit of West Georgia College. Its functions include receiving and administering private funds and providing other services for the advancement of the College. The policies of the foundation are established by a Board of Trustees composed of outstanding business and professional leaders and by officers elected by the trustees.

The unrestricted gifts received by the foundation are being used currently to:

1. Underwrite an extensive program of student aid.
2. Provide equipment and services which cannot be funded by state appropriations, but which are necessary for institutional advancement.
3. Benefit the College in other ways subject to the approval of the Foundation's Board of Trustees.

The Foundation encourages unrestricted contributions which can be used in a manner deemed most beneficial to the College. Gifts, received for specific purposes that are approved by the College, are used where designated by the donor.

OFFICERS

J. R. Newell, *Chairman*

Lamar Plunkett, *Vice-Chairman*

*Phyllis Lewis Fountain, *Executive Director and Treasurer*

*Tracy Stallings, *Secretary*

BOARD OF TRUSTEES

A.J. Andre

Michael S. Barron

Dr. James E. Boyd

John W. Boyd

Mrs. Helen Boykin

*Dr. L. Wayne Brown

*Ovid Davis

*Saidee Scott Dial

*Dr. Alton Hallum

*E.H. Hearn, Jr.

*Harold O. Higgins

Theodor F. Hirsh

John S. Hubbard, Sr.

Fred Hutchins

*Mrs. Opal Ward Jones

Hardy McCalman

*A.R. McGukin

J.R. Newell

Stanley Parkman

*Dr. James C. Pope

Lamar Plunkett

L. Richard Plunkett

*Hugh Richards

*Roy Richards

Carl A. Robertson, Jr.

Chester A. Rousch

Roger Schoerner

Robert J. Stone

*Robert D. Tisinger

Dr. Maurice K. Townsend

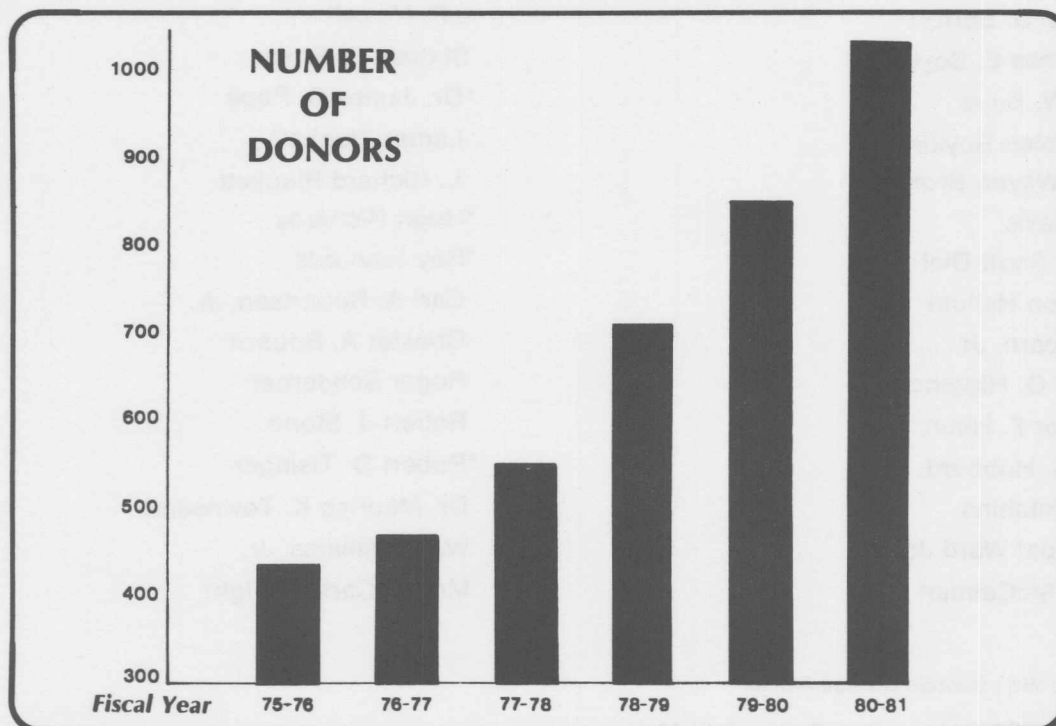
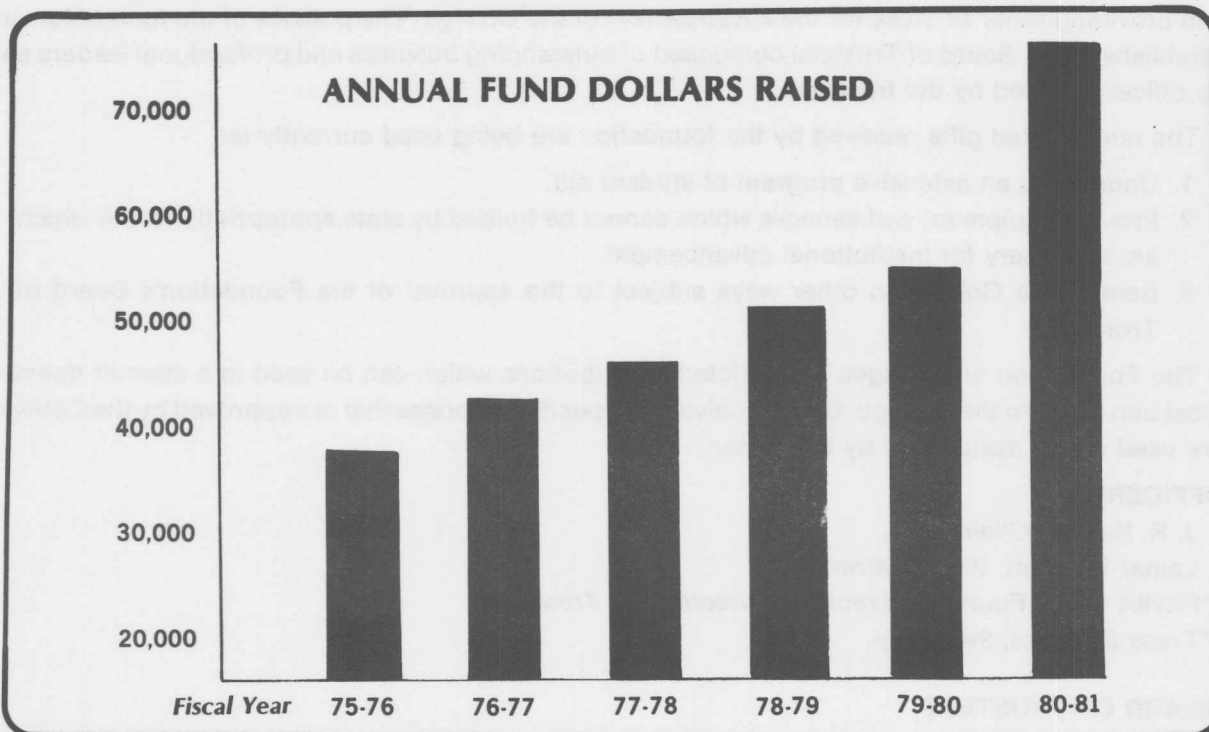
W.W. Williams, Jr.

Mrs. J. Carter Wright

*Indicates West Georgia College Alumni

SOURCE: WGC Undergraduate Catalog 1981-82

West Georgia College
ANNUAL FUND DRIVE RESULTS*
 Fiscal Years 1975/76 to 1980/81

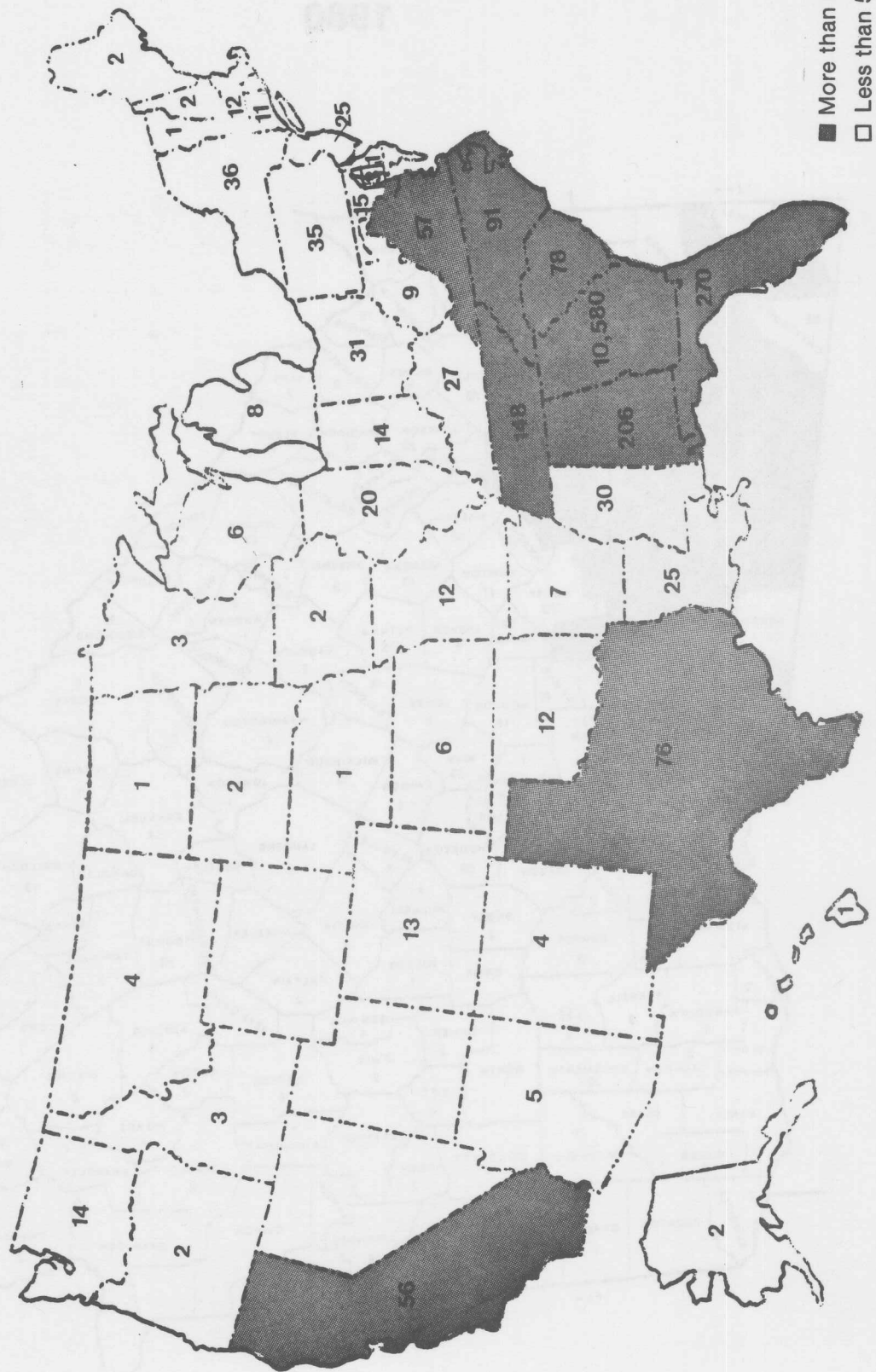


*SOURCE: 1980 Annual Fund Honor Roll of Giving, WGC Office of Development and Alumni Services

NUMBER OF WGC ALUMNI 1980



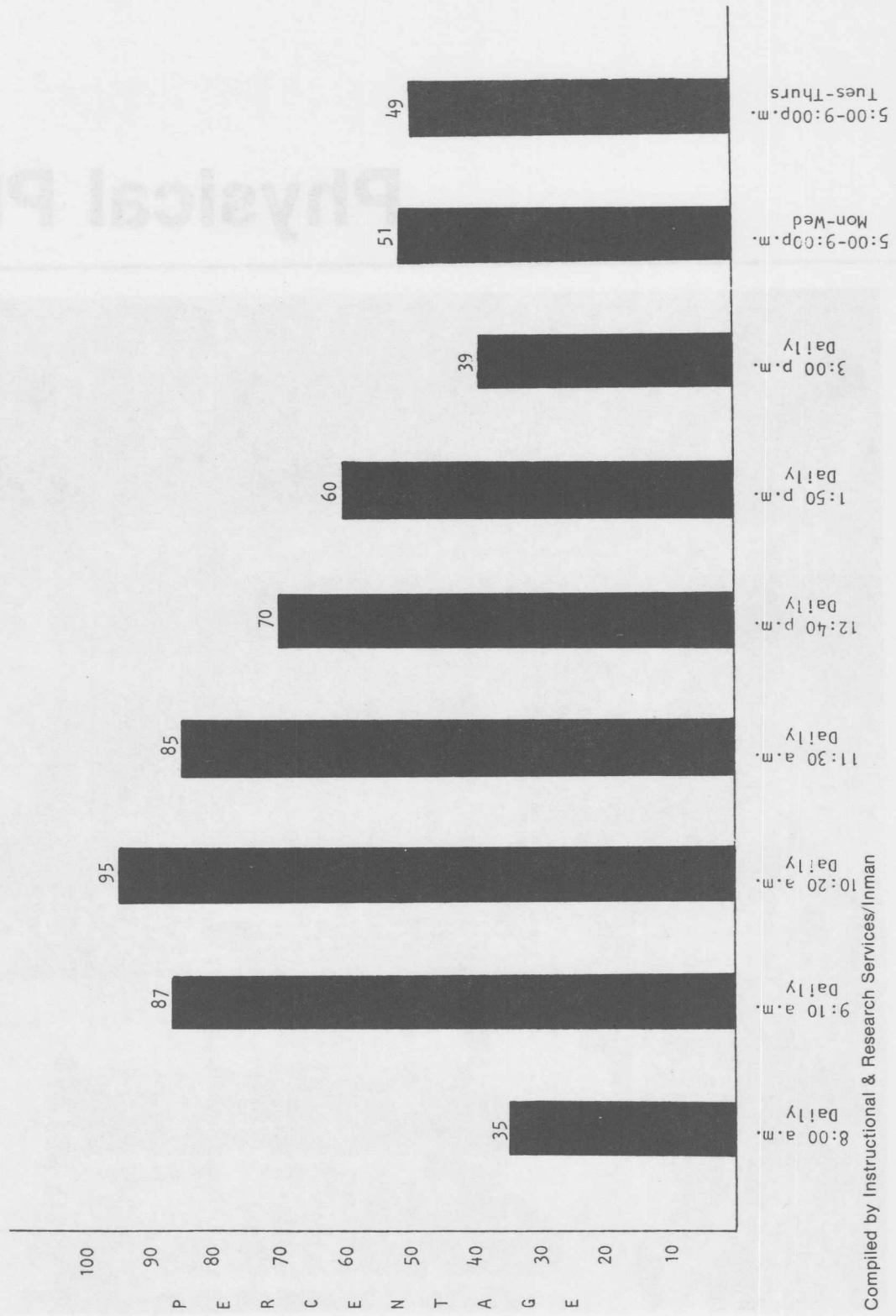
NUMBER OF WGC ALUMNI BY STATE 1980



Physical Plant

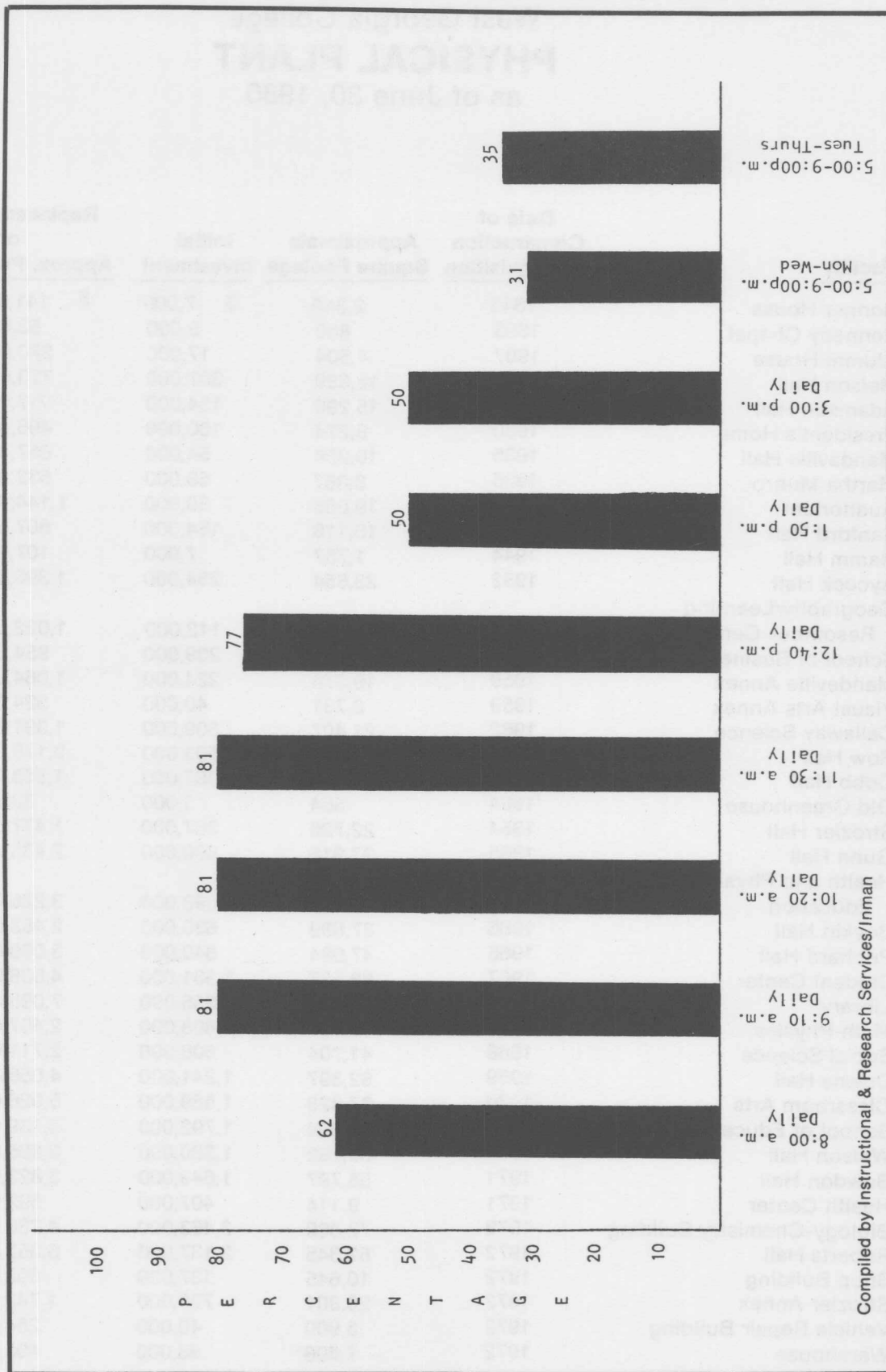


West Georgia College
CLASSROOM UTILIZATION
 Fall Quarter 1981



Compiled by Instructional & Research Services/Inman

West Georgia College
LABORATORY UTILIZATION
 Fall Quarter 1981



West Georgia College
PHYSICAL PLANT
as of June 30, 1980

<u>Facility</u>	<u>Date of Construction or Acquisition</u>	<u>Approximate Square Footage</u>	<u>Initial Investment</u>	<u>Replacement Cost or Approx. Present Value</u>
Bonner House	1843	2,345	\$ 7,000	\$ 141,000
Kennedy Chapel	1893	880	5,000	53,000
Alumni House	1907	4,504	17,000	270,000
Melson Hall	1907	12,889	307,000	773,000
Adamson Hall	1918	15,290	134,000	917,000
President's Home	1930	8,274	100,000	496,000
Mandeville Hall	1935	10,954	54,000	657,000
Martha Munro	1935	8,867	53,000	532,000
Auditorium	1937	19,066	50,000	1,144,000
Sanford Hall	1938	10,118	164,000	607,000
Hamm Hall	1944	1,787	7,000	107,000
Aycock Hall	1952	23,554	254,000	1,396,000
Geography/Learning Resources Center	1954	15,726	112,000	1,022,000
School of Business	1958	14,682	209,000	954,000
Mandeville Annex	1959	16,376	224,000	1,064,000
Visual Arts Annex	1959	8,731	40,000	524,000
Callaway Science	1962	21,407	309,000	1,391,000
Row Hall	1963	33,522	503,000	2,179,000
Cobb Hall	1964	25,430	367,000	1,653,000
Old Greenhouse	1964	504	5,000	33,000
Strozier Hall	1964	22,726	367,000	1,477,000
Gunn Hall	1965	37,916	690,000	2,465,000
Health and Physical Education	1965	49,636	893,000	3,226,000
Boykin Hall	1966	37,889	630,000	2,463,000
Prichard Hall	1966	47,084	840,000	3,060,000
Student Center	1967	63,127	1,331,000	4,038,000
Library	1968	109,155	3,255,000	7,095,000
Math-Physics	1968	37,800	808,000	2,457,000
Social Science	1968	41,704	808,000	2,711,000
Downs Hall	1969	62,397	1,241,000	4,056,000
Classroom Arts	1970	77,328	1,569,000	5,026,000
School of Education	1970	63,684	1,792,000	4,139,000
Watson Hall	1970	59,762	1,320,000	3,885,000
Bowdon Hall	1971	58,797	1,649,000	3,822,000
Health Center	1971	9,114	407,000	592,000
Biology-Chemistry Building	1972	72,860	2,463,000	4,736,000
Roberts Hall	1972	82,345	2,137,000	5,352,000
Shop Building	1972	10,645	137,000	692,000
Strozier Annex	1972	26,801	728,000	1,742,000
Vehicle Repair Building	1972	3,900	40,000	254,000
Warehouse	1972	7,608	98,000	495,000

Physical Plant (continued)

<u>Facility</u>	<u>Date of Construction or Acquisition</u>	<u>Approximate Square Footage</u>	<u>Initial Investment</u>	<u>Replacement Cost or Approx. Present Value</u>
Tyus Hall	1973	51,119	1,427,000	3,323,000
Food Service Building	1974	48,160	1,465,000	3,130,000
Locksmith-Electronics	1974	987	2,000	59,000
Greenhouse Grounds Shop	1976	600	1,000	36,000
Grounds Maintenance Building	1977	1,800	16,000	108,000
Heavy Equipment Shop	1977	720	2,000	43,000
Lawn Mower Repair Shop	1977	960	3,000	58,000
Foundry	1979	400	1,000	24,000
Observatory	1979	484	16,000	29,000
Field House	1980	3,026	30,000	197,000
Old Barn	1980	1,420	5,000	92,000
Track Building	1980	800	5,000	52,000
TOTAL		\$1,346,660	\$29,097,000	\$86,847,000

Compiled by Instructional & Research Services/Inman

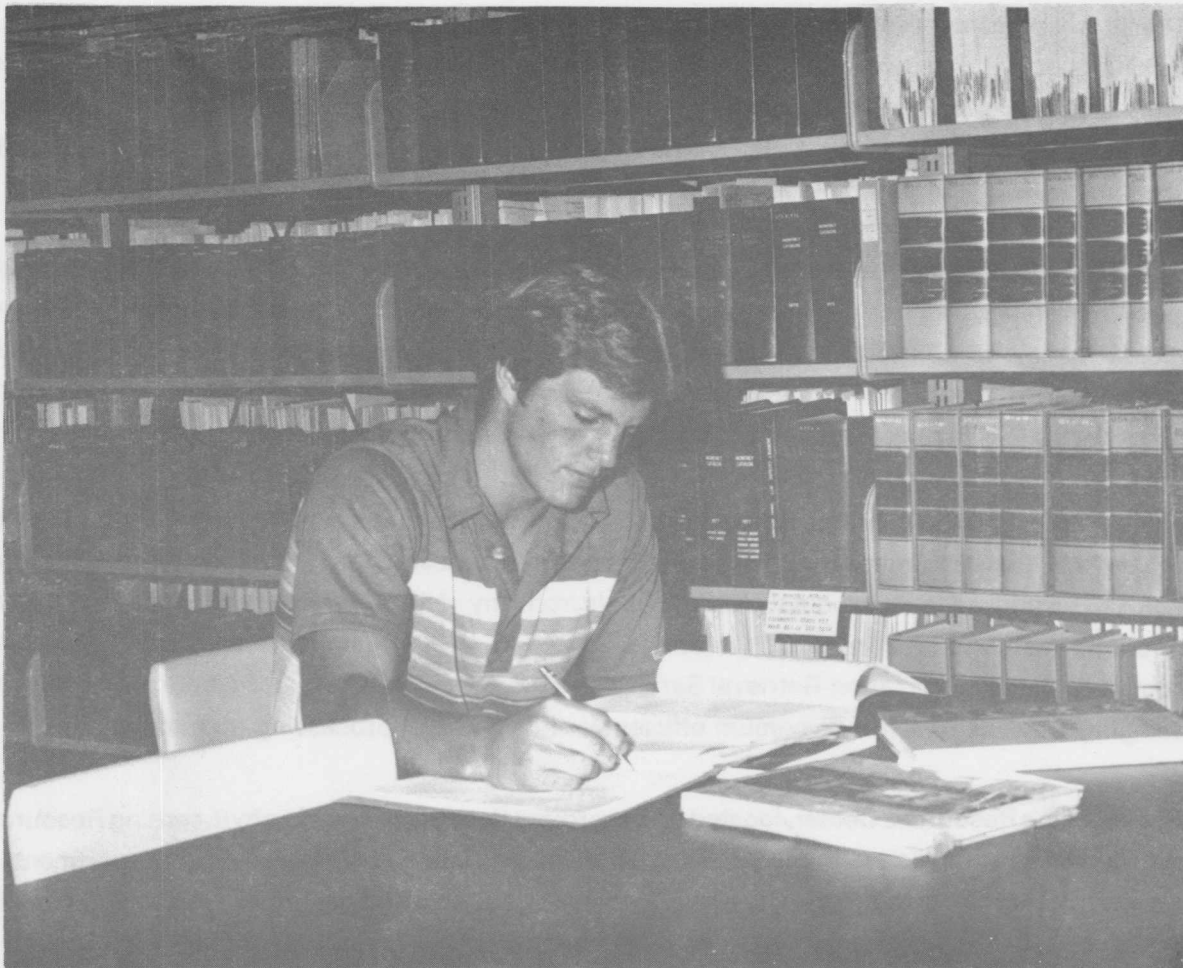
WEST GEORGIA COLLEGE LAND HOLDINGS

<u>Property</u>	<u>Acres</u>	<u>Year</u>	<u>Cost</u>
B.A. Sharpe	275.000	1970	\$9,625.00
Driver	0.319	1965	5,500.00
J. Perkins	0.976	1965	4,500.00
Pope	3.850	1965	5,500.00
O.R. Perkins	1.790	1965	4,700.00
Cash	1.083	1965	7,000.00
Herb	0.483	1966	4,000.00
Cole	25.010	1966	20,758.30
Roop	4.410	1966	60,000.00
Hughes	1.860	1967	8,212.50
Pruitt	0.226	1967	10,000.00
Harper	0.164	1968	5,000.00
Staples	17.640	1968	44,100.00
Cole	65.650	1973	128,017.50
Sold to City of Carrollton	(15.000)	1980	(29,250.00)
	383.46		\$287,663.30
Current value of land	\$5,000,000		

Compiled by Instructional & Research Services

WEST GEORGIA COLLEGE IRVING S. INGRAM LIBRARY

Library



WEST GEORGIA COLLEGE IRVINE S. INGRAM LIBRARY

The Library is one of the most important centers on any campus and West Georgia College's Irvine Sullivan Ingram Library is one of the most modern library facilities in the state of Georgia. The first phase of this four story structure was built in 1968 and the addition was completed in 1980 to provide over 85,000 square feet of usable research/storage areas and over 1,000 seating spaces for students and faculty.

The library presently contains seminar and conference rooms, lockable faculty carrels, hundreds of individual study carrels, a room for microform reading, the Annie Belle Weaver Special Collections Room, large areas for reference, periodical materials, maps and the circulating book collection. Computer terminals, video receivers, typewriters and copy machines are also available to assist students and faculty with their study and research.

The Irvine Sullivan Ingram Library presently houses approximately 230,000 bound volumes, 16,200 reels of microfilms, a limited audiovisual collection and more than 630,000 pieces of microform as well as 9,500 maps and charts and 10,000 volumes/pieces of special collection material. The Library currently subscribes to over 1,300 magazines and newspapers and is also the Sixth Congressional District depository for over 128,000 United States government publications.

Faculty and graduate students have automated access to materials in other United States libraries via SOLINET's on-line interlibrary lending system and may also apply for a Joint Borrower's Card which can be utilized to check out library materials from any of the other thirty-two University System of Georgia institutions' libraries. Literature searches in all disciplines are available through the automated Dialog Information Retrieval Service and the library also has automated book order and cataloging services to insure maximum efficiency of its material processing operation.

The Learning Resources Center, located on the ground floor of the Geography/Learning Resources Building with an extension in the Education Center, assists faculty members from all departments in improving instruction through the use of audio-visual equipment and materials. A well trained staff is available to provide professional services and consultation in developing more effective means of instruction. Services include production of color slides, B & W film and prints, charts, graphs, dry mounting, laminating, transparencies, audio tape production and dubbing, and film procurement from various film libraries. Equipment includes cassette recorders, record players, overhead, opaque, slide, filmstrip and motion picture projectors. The LRC is equipped with a modern television facility located in the Education Center to provide the faculty with up-to-date color video taping capabilities. WWGC, the College's educational FM radio station, is maintained by students and operated under the supervision of the LRC.

The staff of the Library and the Learning Resources Center are comprised of thirty full-time employees. Approximately 44% of the staff members of the Ingram Library are professional librarians holding faculty rank with appropriate graduate degrees in Library Science from accredited library schools.

A compilation of the Ingram Library's Acquisition and Services statistics for the past three years are provided in the table below.

West Georgia College
LIBRARY ACQUISITIONS
 FY 1979 — FY 1981

	FY 1979	FY 1980	FY 1981
HOLDINGS			
Volumes added during year	10,612	2,396	7,403
Volumes held at end of year	216,577	218,973	226,376
Reels of microfilm held at end of year	15,437	15,751	16,091
Physical units of other forms of microtext held at end of year	564,563	590,187	614,517
Periodical titles being received at end of year	1,989	1,457	1,314
ITEMS			
U.S. Documents	112,227	127,237	141,058
Annual Reports of Corporations	792	494	624
CIRCULATION INFORMATION	111,013	127,038	126,539
INTERLIBRARY LOANS			
Borrowed	812	603	927
Loaned	483	1,002	1,510
REFERENCE QUESTIONS			
Information	7,937*	8,987	14,562
General	Not counted	5,222	5,348

*Government Document and Periodical reference questions were not counted in FY 1979.

WEST GEORGIA COLLEGE COMPUTER CENTER

Computer systems primarily used in the Computer Center include the locally operated and maintained DC OMEGA and model 7. The IBM System/360 Model 5 is also used in the Computer Center. Other facilities include a dedicated Georgia Institute of Technology COSYMBUS connection to the Atlanta campus.

Computer Resources



WEST GEORGIA COLLEGE COMPUTER CENTER

Computer systems primarily used at the Computer Center include the locally operated and maintained CDC OMEGA 480 model 1, the IBM Series/1 model F minicomputer, and the University of Georgia Computer Network's CDC CYBER 170/730. Other hardware facilities available are described below.

HARDWARE FACILITIES

<i>Description</i>	<i>Quantity</i>
CDC 1805 Remote Batch Terminal — a simple computer with the capability to send card input to a remote central processor and to print information received from the central processor.	1
Tran Multiplexor — sends and receives messages to the Network's central processor	1
CMC-4 DPF Unit — controls the flow of information between the OMEGA CPU and remote batch terminals	
Interactive Terminals	
Decwriter—three have APL features	11
PERKIN-ELMER CRT—four have printer ports	6
Texas Instruments	6
Elite 1521 with printer port	1
MICRO'S	
APPLE—six may be used as interactive terminals	12
Display writer	1

The available computer resources are used for administrative work of the college, for faculty, student, and institutional research, and extensively for instructional purposes. The demand for data processing resources has grown steadily, both in quantity and quality of resources and in the number of users. The following table demonstrates the OMEGA utilization and the twenty-three percent increase of jobs run in fiscal year 1981.

OMEGA UTILIZATION

User	Percent of Total Time Used	Number of Jobs Run	Percent of Total Jobs Run
Administration	77.4	29,323	49.1
Instruction	13.6	24,900	41.7
Faculty and Institutional Research	4.8	3,715	6.2
System Maintenance and Miscellaneous	4.2	1,803	3.0
Totals			
Fiscal Year 1981		59,741	
Fiscal Year 1980		48,506	
Percent Increase		23.2%	

The Computer Center provides technical and liaison support between instructional and research users and the available computational support resources. Faculty, staff and students can receive guidance about procedures and desirable techniques to be followed when using application packages. Diagnostic analysis support is provided when difficulties are encountered in the use of these resources. Data entry for research, instruction, and administrative work is available. Several high level programmers plan and develop application systems with the administrative users.

WEST GEORGIA COLLEGE STUDENT SERVICES

Student Services



WEST GEORGIA COLLEGE STUDENT SERVICES

Admissions

The Admissions Office travels the state talking with high school and junior college students about West Georgia College, shows visitors about campus, sponsors visitation days, works with orientation, and processes applications for admissions.

Financial Aid

The Financial Aid Office coordinates financial assistance, funded by the federal and state governments, the College, WGC Foundation, companies and individuals, to approximately one-third of West Georgia's students.

Health Services

The Student Health Center, which houses both an outpatient clinic and the infirmary, is under the supervision of a full-time physician. Nurses are on duty 24 hours a day. The Center is in operation from the day residence halls open through the last day of exams each quarter.

Intramural Program

Opportunities for recreation, social contacts and healthful exercise are provided by the College through an excellent intramural athletic program for those not participating in intercollegiate athletics. Intramural competition includes football, softball, basketball, volleyball, tennis and track.

Placement & Cooperative Education

The Office of Placement and Cooperative Education provides a centralized placement service for all departments at West Georgia College. The Office serves both students and alumni who are seeking full-time, part-time or summer employment by providing a job listing service whereby students and alumni may keep their resumes, recommendations and related materials on file to be sent to prospective employers upon request. Campus interviews are scheduled throughout the year with representatives from companies, government agencies and school systems. In addition to maintaining a library of current information on state and federal jobs, the job market in general, and various companies, the office also conducts workshops on resume writing and interview techniques. This Office coordinates the Co-Op Program for students desiring to work and go to college on an alternating quarters basis. It also provides application forms and information about internships for students in business, public service agencies and governmental institutions.

Registrar's Office

The Registrar's Office conducts all registration and pre-registration activities. They issue a bulletin of course offerings prior to each quarter. This Office provides the recording function for all grades received in course work and sends transcripts when requested by the student.

Residence Life

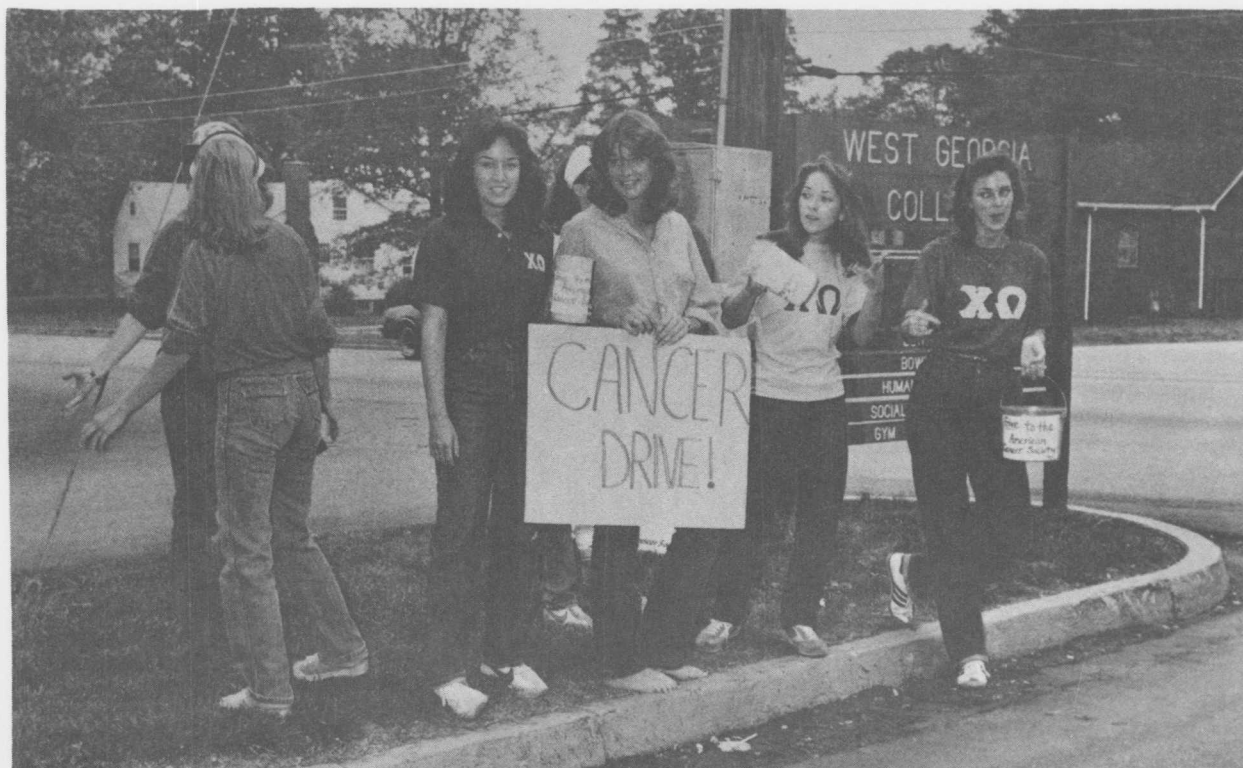
West Georgia living centers meet the physical needs of comfort, safety, and attractive surroundings and aid in the development of a disciplined mind, a social consciousness, and a large degree of responsibility for governing a group's affairs. To this end, the Residence Life Office supervises the duties of all resident advisors, head residents, and resident directors. The staff process all housing applications and make hall and room assignments.

Student Activities

The Student Activities Office plans and directs the many phases of college life not directly related to the classroom. The Student Activities personnel coordinate offerings of the College Program Board, serve as advisors for Greek organizations and other student groups, organize Homecoming and many other activities.

Student Development Center

The Student Development Center offers a variety of services which are free to all West Georgia College students. Professional counselors are available to assist students in coping with personal problems. Workshops are regularly held to help students learn to plan their future to deal with other concerns of college life. Individual and group career counseling is available as well as a computerized career guidance program. The Center also provides a tutorial service and achievement programs for students with study or learning problems. Special needs and problems of disabled students are handled by this office.



SOURCE: WGC Undergraduate Catalog 1981/82 & The Uncatalog 1981/82