

1986 - 1987 West Georgia College Fact Book



Division of Budget and Research Services
West Georgia College
Carrollton, Georgia 30118-0001

West Georgia College

Carrollton, Georgia 30118

A SENIOR COLLEGE IN THE UNIVERSITY SYSTEM OF GEORGIA
404-834-1388

OFFICE OF THE PRESIDENT



Dear Colleagues:

West Georgia College is deeply committed to making the best possible use of the resources allocated through the Board of Regents and the State Legislature, and we are well aware that proper planning is necessary for this process to be successful.


One of the essential ingredients in institutional planning is the compilation, analysis, and use of statistical data and other information relating to the function of the College. This document is designed to help meet that need.

For the sixth consecutive year, the Division of Budget and Research Services, with the assistance and cooperation of offices throughout the campus, has collected, published, and distributed this Fact Book which profiles many aspects of the institution's work.

Its purpose is two-fold: The central focus is to get accurate, timely information in the hands of the College's planning units for internal considerations; a secondary purpose is to acquaint outside constituencies with a measure of the successes of the College in meeting its overall goals.

The past and the present are important ingredients in the formula that will evolve into what the institution becomes in the future. It is essential that appropriate personnel within and outside the College be aware of these distinguishing features as the path for the future is charted. I feel confident this document will help fulfill that need.

Sincerely,


Maurice K. Townsend
President

fm

West Georgia College Fact Book

Preface and Acknowledgments

The Division of Budget and Research Services is proud to offer the West Georgia College *Fact Book* 1986-1987. Thanks to improved technology, this volume features new graphics and attractive displays. However, our major purpose continues the tradition of providing reliable statistical data and summary information through sound institutional research. The *Fact Book* is designed to answer the most frequently asked questions about the College, to be a point of reference for institutional self-study and planning, and to serve as an institutional profile for our many publics.

Ms. Laura H. Lamb, Coordinator of Institutional Research, compiled and edited the 1986-87 *Fact Book*. Her tireless efforts and attention to countless details made this volume possible. Special contributions of Ms. Charlcie C. Inman, Budget Analyst III, and Ms. Teresa C. Stamps, Research Analyst are acknowledged.

In addition, individuals representing many different College units provided data, information and suggestions that contributed to the expansion and improvement of the *Fact Book*. Mr. Francis C. (Chuck) Ormsbee, Media Utilization Specialist, deserves special recognition for producing the new graphics displayed in this volume. Our gratitude is extended to Ms. Lisa W. Ledbetter, Director of Publications and Printing and the Central Duplicating staff for their dedicated service. Through hard work and professionalism, these individuals and others have assisted in making possible the 1986-1987 *Fact Book*.

Richard A. Folk, Director
Division of Budget and
Research Services

January 1987

WEST GEORGIA COLLEGE FACT BOOK

TABLE OF CONTENTS

General Information

History of West Georgia College	2
Purpose of the College	3
Accreditations & Affiliations	3
Campus Description	4
Map of Campus	5

Administration

Board of Regents, University System of Georgia	8
WGC General Administration	9
WGC Academic Administration	10
WGC Organizational Chart	11

Student Information

SAT Scores of Entering Freshmen, 1976/77-1983/84	14
High School & Freshmen Grade Point Averages of Entering Freshmen, 1976/77-1983/84	14
Composition of Student Body, Fall 1986	15
Minority Enrollment, Fall 1986	15
Geographic Distribution of Student Body, Fall 1986	16
WGC Enrollment from Counties in Primary Service Area, Fall 1986	17
Detailed Composition of Student Body, Fall 1979-1986	18
WGC Headcount & Equivalent Full-Time Enrollment, 1980-1986	19
WGC Headcount & Equivalent Full-Time Enrollment with Percent of Annual Change, 1980-1986	20
Admissions Data, Fall 1979-1986	21
History of Continuing Education Programs, Fiscal Years 1977-1986	22
Retention Rates of Fall Quarter Freshmen Classes, 1976-1985	23
Age Distribution of WGC Students, Fall 1982 vs. Fall 1986	24
History of Changes in Ages of WGC Students, Fall 1980-1986	25
Freshmen & Graduate Enrollment, Fall 1976-Fall 1986	26
Enrollment by Sex, 1977-1986	27
Undergraduate Academic Profile by Degree, Fall 1986	28
Graduate Academic Profile by Degree, Fall 1986	28
Student Financial Aid, Fiscal Years 1979-1986	29

Degree Information

Degrees & Majors Authorized By The Board of Regents, Fall 1986	32
Undergraduate & Graduate Degrees Conferred, 1976/77-1985/86	33
Degrees Conferred, 1976/77-1985/86	34

Faculty Information

Faculty Profile by Highest Degree Earned, 1985/86	38
Faculty Profile by Rank, 1985/86	38
Faculty Profile by Tenure Status, 1985/86	39
Faculty Profile by Sex, 1985/86	39
Summary of Faculty Profiles, 1985/86	40

Financial Information

Education & General Budget Expenditures, FY 82-FY 87	42
General Budget Growth, FY 78-FY 87	44
Distribution of Revenue by Source, FY 82-FY 87	45
Distribution of Expenditures by Function, FY 82-FY 87	46
E & G Expenditures Per EFT Student, FY 82-FY 87	47
Average Salary by Employee Category, FY 82-FY 87	47

Quarter Credit Hour Information

Average Quarter Credit Hours Per Student Enrolled by Level, Fall 1977-1986	50
Detailed Enrollment & QCH History, FY 81-FY 87	51
Headcount Relative to the EFT & QCH History, Fall 1972-Fall 1986	52

Research

Distribution of Grants and Contracts, Fiscal Year 1986	54
Faculty Research Grants, Fiscal Year 1987	55

Alumni Association

WGC Alumni Association	58
Officers of Alumni Association	58
WGC Foundation	59
Officers and Board of Trustees, WGC Foundation	59
Annual Fund Drive Results, FY 79-FY 86	60
Geographical Distribution of Alumni, 1986	
State of Georgia	61
United States	62

Physical Plant

Classroom Utilization, Fall 1986	64
Laboratory Utilization, Fall 1986	65
Campus Facilities	66
Land Holdings	67

Library

Irvine S. Ingram Library	70
Library Acquisitions, FY 82-FY 86	71

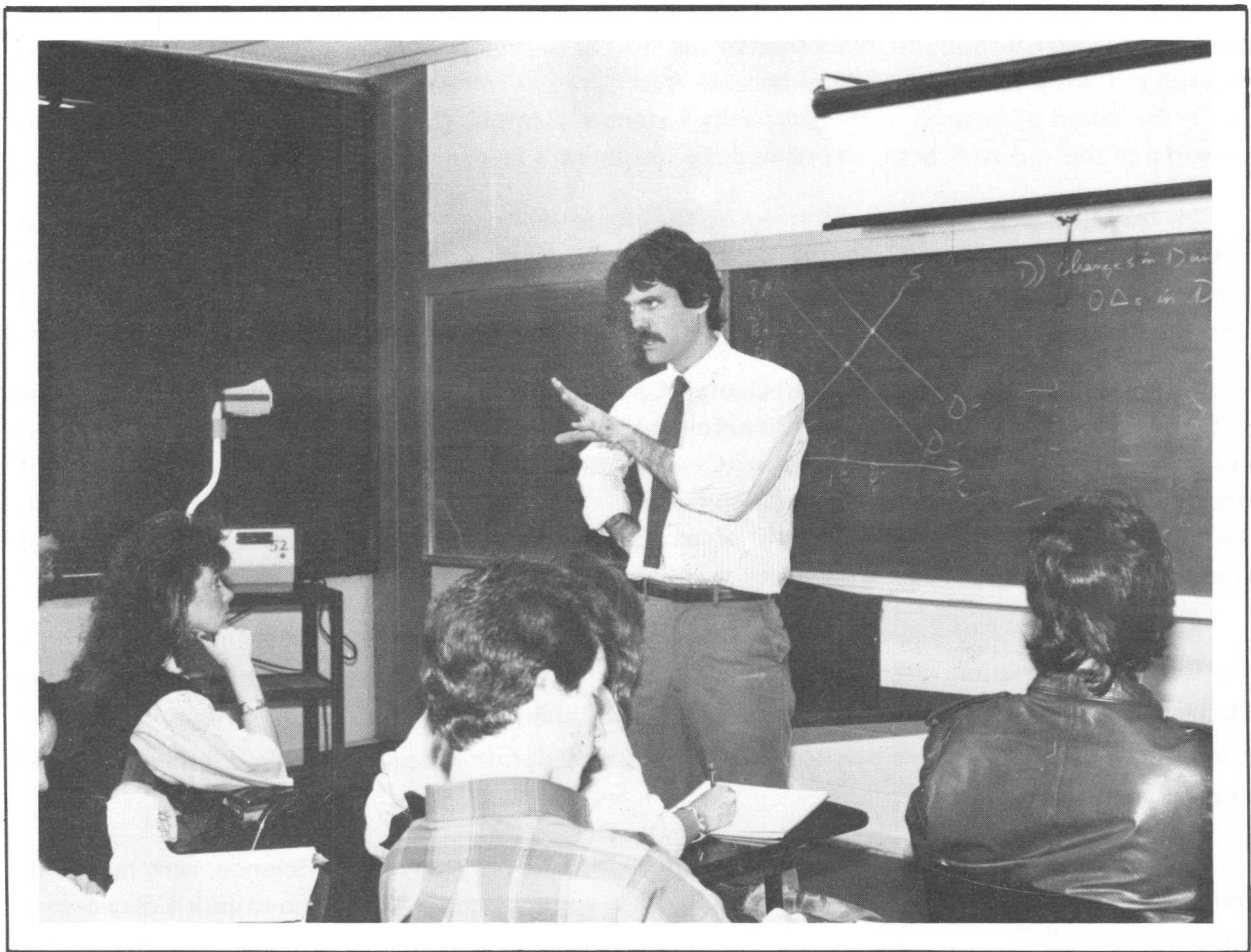
Computer Resources

Hardware	74
Software	75
Utilization	76

Student Services

Admissions	78
Financial Aid	78
Health Services	78
Intercollegiate Athletics	78
Intramurals & Recreation	78
Placement & Cooperative Education	78
Registrar's Office	79
Residence Life	79
Student Activities	79
Student Development	79

General Information



WEST GEORGIA COLLEGE

HISTORY

West Georgia College is a coeducational, residential, liberal arts institution located in Carrollton. A senior college unit of the University System of Georgia, it enrolls students from most counties in Georgia, as well as from other states and several foreign countries.

The College is situated on the western side of Carrollton, the county seat of Carroll County and one of Georgia's fastest growing industrial areas. Carrollton serves a regional population of more than 100,000 as a center for retail shopping, medical and educational services, entertainment and recreational activities, and financial services. Carrollton is an hour's drive from Atlanta via Interstate 20.

West Georgia College originated in 1906 as the Fourth District Agricultural and Mechanical School, one of twelve such institutions established by the State of Georgia between 1906 and 1917. Twenty-seven years later, Carrollton's A & M School became West Georgia College, a junior college established by an act of the Board of Regents of the University System of Georgia. Dr. Irvine S. Ingram, who had been principal of the A & M School, was named the institution's first president.

In 1939, the College was authorized by the Board of Regents to add a three-year program in elementary education. In 1957, the institution was authorized to confer the B.S. degree in Education, making it a four-year senior college unit of the University System of Georgia. Two years later, West Georgia College added the Bachelor of Arts degree in the fields of English, history, and mathematics.

During the following 12 years, West Georgia College became one of the fastest growing institutions of higher learning in the South. From an enrollment of 576 in 1957, the institution's student body now numbers approximately 6,150 students. West Georgia offers nine undergraduate degrees, the Bachelor of Arts, Bachelor of Science, Bachelor of Science in Education, Bachelor of Business Administration, Bachelor of Music, Bachelor of Science in Recreation, Bachelor of Science in Earth Science, Bachelor of Fine Arts, and Bachelor of Science in Nursing with majors in nearly fifty different fields.

In 1967, the Board of Regents authorized the initiation of a graduate program at the master's level. The following six Masters degrees are offered in a combined total of 28 areas of study: Master of Arts, Master of Business Administration, Master of Education, Master of Music, Master of Public Administration, and Master of Science. The Specialist in Education degree is offered in eight areas of study.

The Associate of Arts, with a major in education, and the Associate of Science, with majors in computer science, criminal justice, nursing, and office administration, have all been added as two-year programs since 1973.

To accommodate the College's growth, a multi-million dollar building program has increased the value of the College's physical facilities to more than \$101.3 million. From a beginning of three small buildings, the College has grown to include more than 40 structures of learning, living, and recreation on its 394-acre wooded campus.

SOURCE: WGC Undergraduate Catalog, 1986-87

PURPOSE OF THE COLLEGE

West Georgia is a multi-purpose public institution providing a liberal arts experience for all its students as a base for their entire educational program. It provides educational preparation in the liberal arts and for professional careers, community college terminal instruction for students from the local geographical area, and special academic options in honors, general and transitional program areas. It seeks to provide a distinctive and realistic educational environment wherein each student may attain a disciplined and open mind, a capacity for self development, and the knowledge and skills essential for living in a free society. This environment includes the opportunity for original thinking, the exchange of ideas, and scholarly involvement with one's natural and cultural heritage.

In the fulfillment of this purpose, the College asserts its faith in higher education, liberal and otherwise, for all who earnestly seek it and can profit from it. The College emphasizes creative teaching, encourages research, and promotes the general advancement of knowledge through undergraduate and graduate programs within a broad spectrum of studies. Programs and services vital to student life, including attention to physical and mental well-being and the problems of adjusting to societal mores, are provided to complement these academic aims. The College also seeks to serve as a center to promote the development of human and natural resources through continuing education and public service programs.

ACCREDITATIONS AND AFFILIATIONS

West Georgia College is fully accredited through the master's level by the Southern Association of Colleges and Schools. All programs preparing teachers through the master's level are accredited by the National Council for Accreditation of Teacher Education, and the undergraduate School of Business programs are accredited by the American Assembly of Collegiate Schools of Business. The College's work in the field of teacher education is fully recognized and accredited by the Georgia State Department of Education. Women graduates of the institution are eligible for membership in the American Association of University Women.

Among Organizations in which the College holds institutional membership are the following:

- American Assembly of Collegiate Schools of Business
- American Association of Colleges for Teacher Education
- American Association of State Colleges and Universities
- American Council on Education
- Georgia Association of Colleges
- Georgia Board of Nursing
- National Association for Foreign Student Affairs
- National Association of Schools of Music
- National Business Education Association
- National Commission on Accrediting
- National Council for Accreditation of Teacher Education
- National League for Nursing
- Southern Association of Colleges and Schools

THE CAMPUS

The campus is a unique blend of the old and the new. Covered with a variety of trees and flowers, the campus is dotted with structures of the early 1900's, as well as buildings exemplifying the most contemporary modes of architecture.

On the front or "Old Campus" as it is sometimes called, a three-block-long expanse of rolling hills shaded by scores of old, towering oak, elm, and maple trees surrounds a number of faded brick buildings stretching in a semi-circle adjacent to the park. This is where West Georgia College began as an A & M School in 1906.

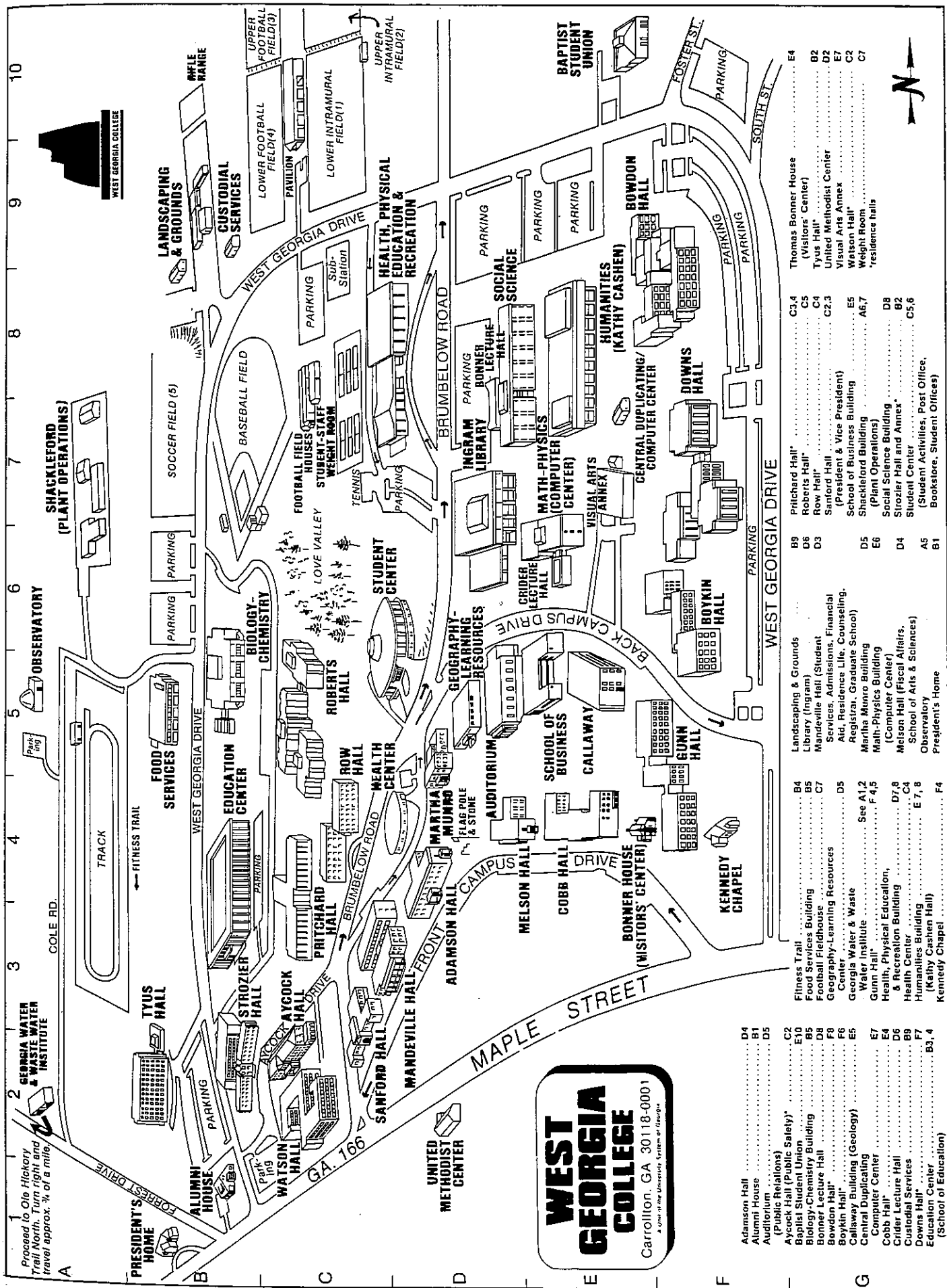
Beyond the Old Campus is a modern academic complex composed of a library, social science, humanities, and math-physics building. A new business school annex was added in 1985. Scheduled for construction in the area is a performing arts center, containing two theatres, seating 250 and 500 respectively. Alumni and friends of the College have contributed over \$450,000 to outfit it with the latest equipment and furnishings. Other buildings in the area include a three-story student center, a health and physical education center featuring a 3,000 seat gymnasium and an indoor pool, and one of the most modern college infirmaries in the state.

Much of the College's physical development has been on the western side of the campus. Located in the area is one of the most unique structures in the University System, the Education Center. The structure contains five large lecture-demonstration rooms which can be changed by sliding partitions into an auditorium seating nearly 1,000, an instructional materials center, television and sound recording studios, audio-visual laboratory and dark room, counseling rooms, group observation rooms, study carrels, and other areas of independent study.

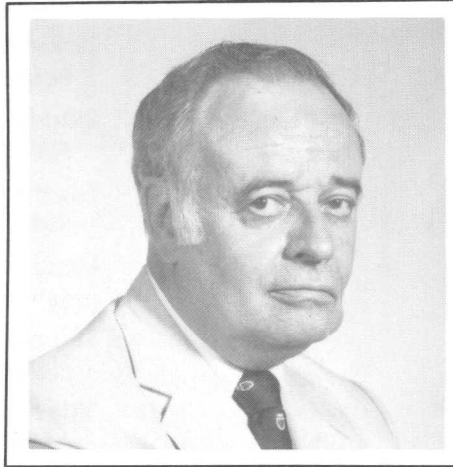
Adjacent to the Education Center is the Biology-Chemistry Building, a facility which includes numerous laboratories, classrooms, lecture halls, and the latest scientific equipment. Other buildings in the area are Tyus Hall, a five-story residence hall which houses upperclassmen, graduate students and married students; a multi-structure plant operations compound; a large food service and activity center; and a well-equipped observatory.

Eleven residence halls are located on the campus, including the five-story high rise hall previously mentioned. One of the newest halls, Bowdon Hall, was named in honor of Bowdon College, a predecessor of West Georgia College.

Two of the oldest and most treasured buildings on campus are the Kennedy Interfaith Chapel and the Bonner House. The Kennedy Chapel was named in memory of the late President John F. Kennedy. At one time the Chapel was owned by the Episcopal Church and later by the Catholic Church. When a new Catholic Church was constructed, the local group gave the Chapel to the College for non-denominational use. In 1966, it was dedicated by the late Robert F. Kennedy in memory of his brother. The Bonner House, constructed in 1843, is the oldest building on campus. The frame colonial structure was originally built as a plantation home and through the years has served various purposes. Because of its historical nature, the house was selected by the Georgia Historical Commission as the site for a marker outlining the history of the College. After complete restoration the Bonner House now serves as a Visitor Center for the campus.



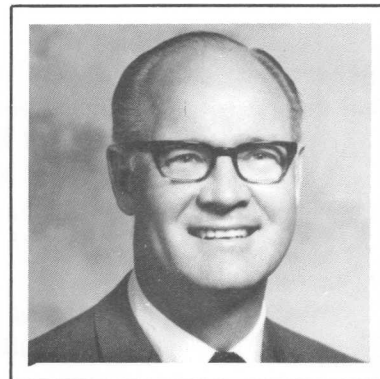
Administration



Maurice K. Townsend
President



John T. Lewis, III
Vice President and
Dean of Faculties



Kenneth C. Batchelor
Vice President for
Business & Finance



Bruce W. Lyon
Vice President for
Student Services



Tracy P. Stallings
Director of
College Relations



Richard A. Folk
Director of Budget
& Research Services

THE UNIVERSITY SYSTEM OF GEORGIA

1986/87

BOARD OF REGENTS

John H. Anderson, Jr., Hawkinsville

State-at-Large

Marie W. Dodd, Atlanta

State-at-Large

Carolyn D. Yancy, Atlanta

State-at-Large

Joseph D. Greene, Thomson

State-at-Large

John E. Skandalakis, Atlanta

State-at-Large

Arthur M. Gignilliat, Jr., Savannah

First District

William T. Divine, Jr., Albany

Second District

William B. Turner, Columbus

Third District

Jackie M. Ward, Atlanta

Fourth District

Eldridge W. McMillan, Atlanta

Fifth District

Edgar L. Rhodes, Bremen

Sixth District

Lloyd L. Summer, Jr., Rome

Seventh District

Thomas H. Frier, Sr., Douglas

Eighth District

Sidney O. Smith, Jr., Gainesville

Ninth District

John W. Robinson, Jr., Winder

Tenth District

OFFICERS AND STAFF

Eldridge W. McMillan

*Chairman**

Jackie M. Ward

*Vice Chairman**

H. Dean Propst

*Chancellor**

Henry G. Neal

*Executive Secretary**

Jacob H. Wamsley

Vice Chancellor

*Fiscal Affairs/Treasurer**

Frederick O. Branch

Vice Chancellor

Facilities

W. Ray Cleere

Vice Chancellor

Academic Affairs

Vice Chancellor

Services

Thomas F. McDonald, Jr.

Vice Chancellor

Student Services

Haskin R. Pounds

Vice Chancellor

Research & Planning

Assistant Vice Chancellor

Information Technology

Wanda K. Cheek

Assistant Vice Chancellor

Planning

T. Don Davis

Assistant Vice Chancellor

Fiscal Affairs/Personnel

Anne Flowers

Assistant Vice Chancellor

Academic Affairs

Gordon M. Funk

Assistant Vice Chancellor

Fiscal Affairs-Accounting

Systems and Procedures

Mary Ann Hickman

Assistant Vice Chancellor

Affirmative Action

H. Guy Jenkins

Assistant Vice Chancellor

Facilities

Thomas E. Mann

Assistant Vice Chancellor

Facilities

David M. Morgan

Assistant Vice Chancellor

Academic Affairs

Roger Mosshart

Assistant Vice Chancellor

Fiscal Affairs-Budgets

J. Pete Silver

Assistant Vice Chancellor

Academic Affairs

Joseph H. Szutz

Assistant Vice Chancellor

Research

SOURCE: WGC Undergraduate Catalog, 1986-87, The System Summary

WEST GEORGIA COLLEGE

1986/87

OFFICERS OF GENERAL ADMINISTRATION

Maurice K. Townsend
President

James E. Boyd
President Emeritus

Ward B. Pafford
President Emeritus

John T. Lewis, III
Vice President/Dean of Faculties

George W. Walker
Vice President Emeritus

Kenneth C. Batchelor
Vice President for Business & Finance

Bruce W. Lyon
Vice President for Student Services

Tracy P. Stallings
Director of College Relations

Richard A. Folk
Director of Budget & Research Services

ACADEMIC OFFICERS

Benjamin W. Griffith
Dean of the Graduate School

Richard L. Dangle
Dean of the School of Arts & Sciences

David H. Hovey, Jr.
Dean of the School of Business

Evelyn R. Fulbright
Dean of the School of Education

ADMINISTRATIVE STAFF OFFICERS

Charles E. Beard
Director of Libraries

Annie Belle Weaver
Director of Libraries Emerita

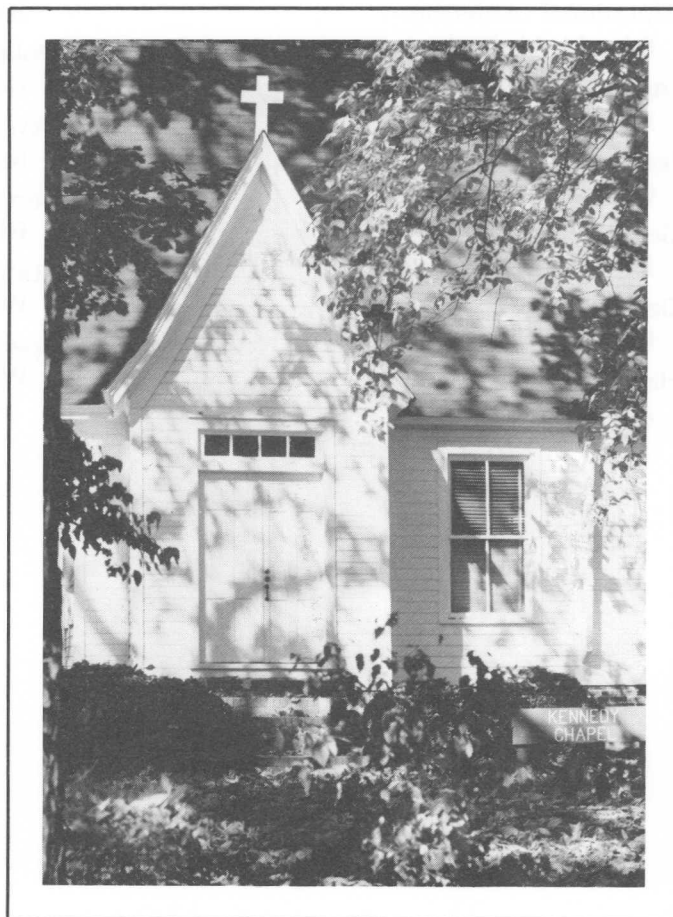
C. Doyle Bickers
Director of Admissions

Joseph D. Doldan
Director of the Computer Center

Gordon E. Finnie
Registrar

Stephen C. McCutcheon
*Director of Continuing Education
and Public Services*

Collus O. Johnson
Director of Continuing Education Emeritus



SOURCE: WGC Undergraduate Catalog, 1986-87

**DEPARTMENTS OF INSTRUCTION &
CHAIRMEN**

Accounting & Finance
Paul D. Baker

Administrative Systems & Business
Education
Donald L. Crawford

Art
J. Bruce Bobick

Biology
Edward E. Gilbert

Chemistry
Lucille B. Garmon

Counseling & Educational Psychology
Arthur L. Sanders

Developmental Studies
Charles E. Wilson

Early Childhood Education
Harry Morgan

Economics
Richard F. Fryman

Educational Leadership
Price M. Michael

English
James W. Mathews

Foreign Languages
Douglas R. Hilt

Geography
James R. O'Malley

Geology
C. Sumner Long

History
Albert S. Hanser

Marketing & Management
Frank R. Hunsicker

Mass Communication/Theater Arts
James C. Gibson

Math & Computer Science
Chatty R. Pittman

Media
Price M. Michael

Middle Grades & Reading
George H. McNinch

Music
Robert M. Coe

Nursing
Jeanette C. Bernhardt

Philosophy
David J. Higgins

Physical Education & Recreation
Thomas W. Leaming

Physics
Jacobus A. Petterson

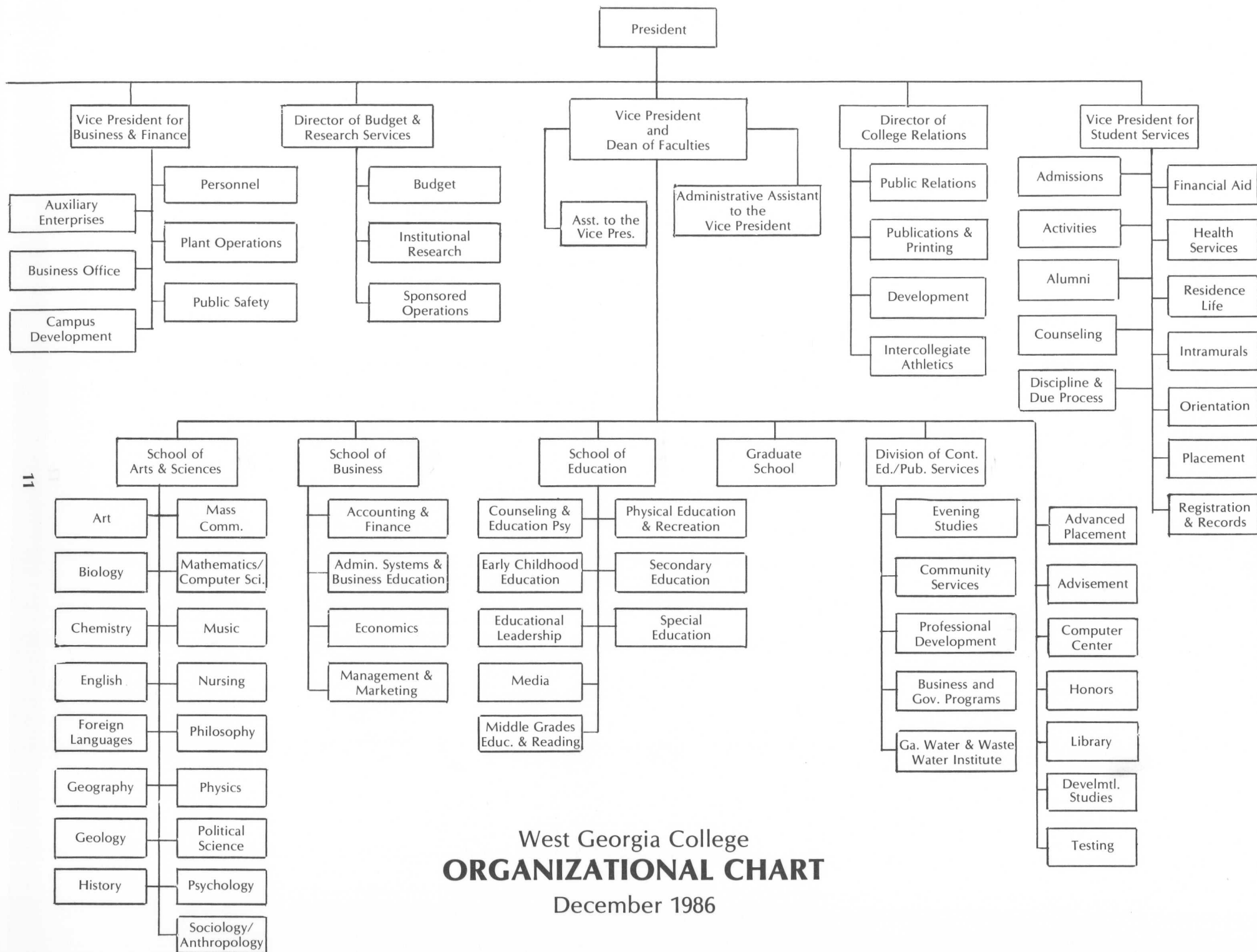
Political Science
Donald T. Wells

Psychology
Myron M. Arons

Secondary Education
Edna Earl Edwards

Sociology/Anthropology
William T. Simons

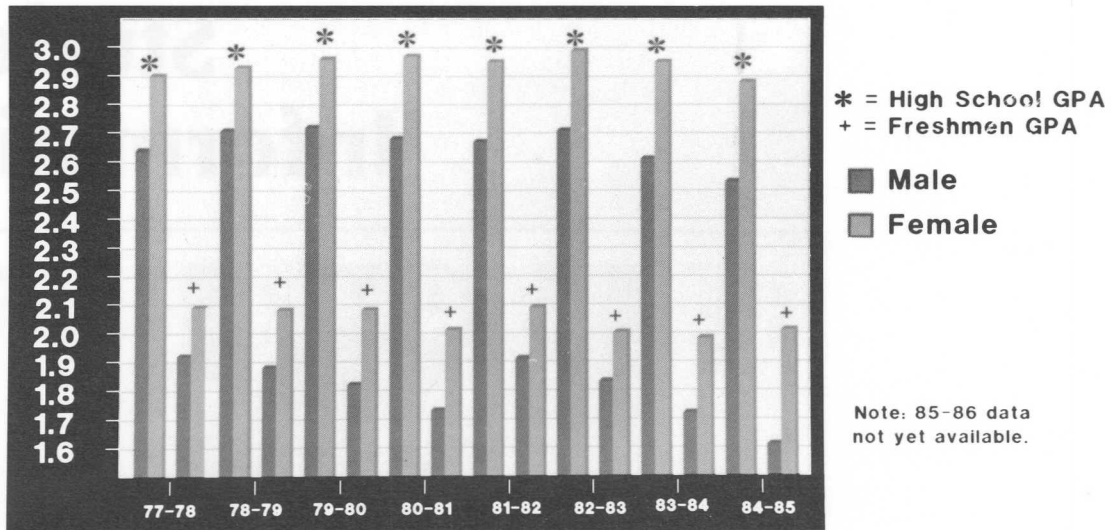
Special Education
William A. Horn



Student Information

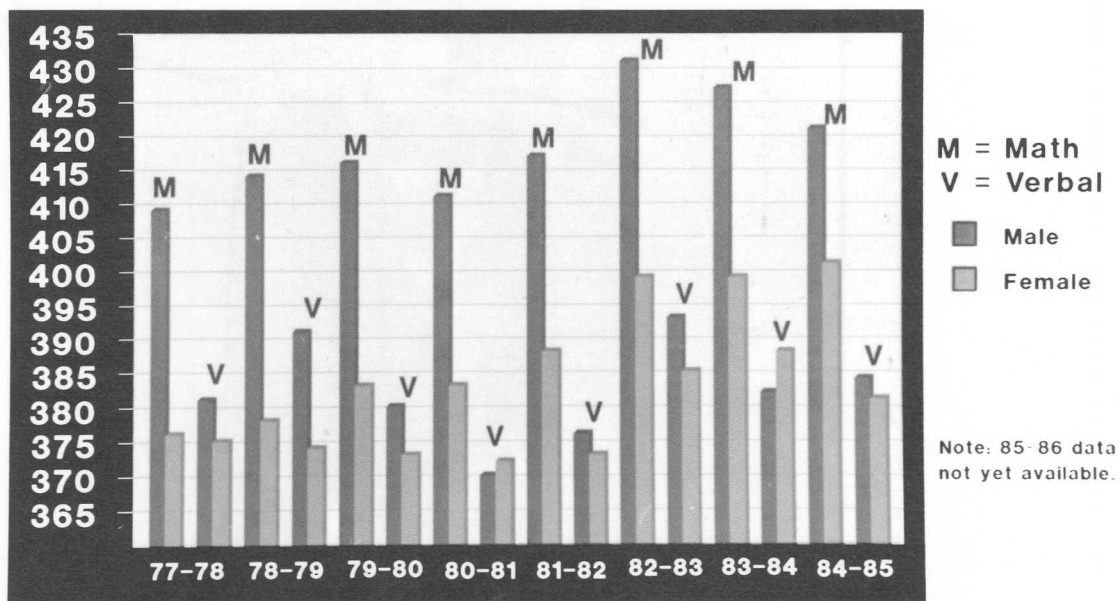


High School and WGC Freshmen Grade Point Averages



Source: Regent's Normative Data for the Freshman Class

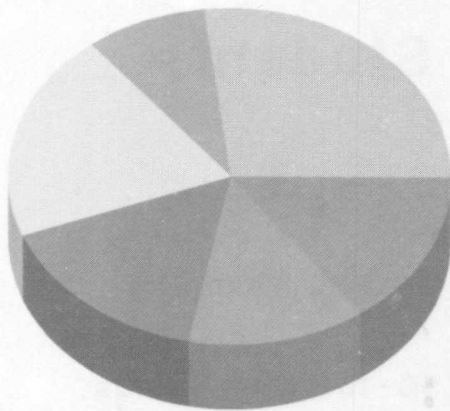
SAT Scores for WGC Freshmen



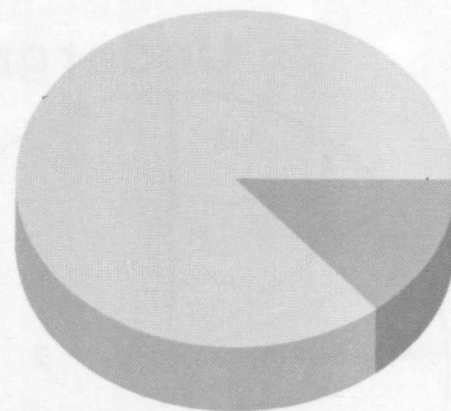
Source: Regent's Normative Data for the Freshman Class

Composition of Student Body

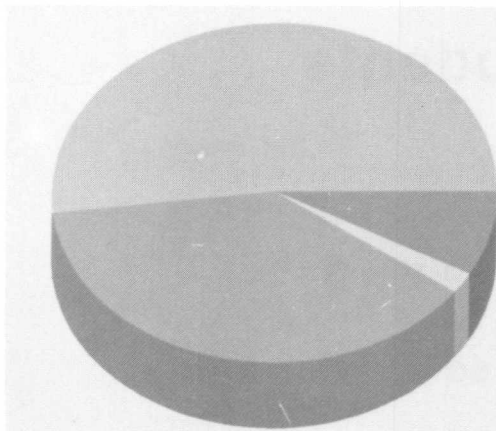
Fall 1986 West Georgia College



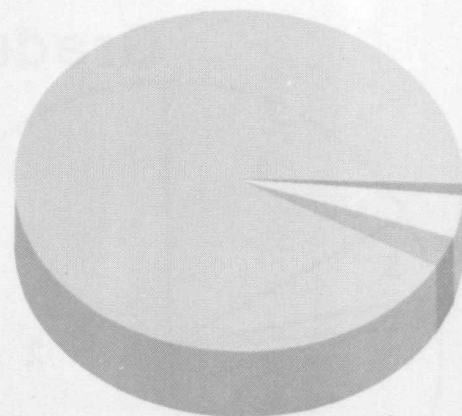
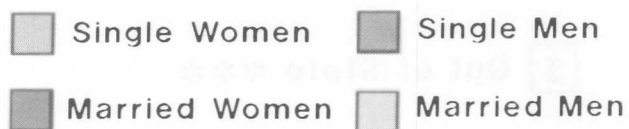
Enrollment by Classification



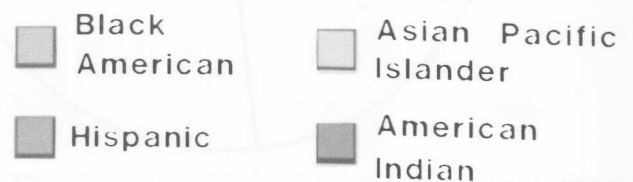
Enrollment by Race



Enrollment by Sex and Marital Status



Minority Enrollment

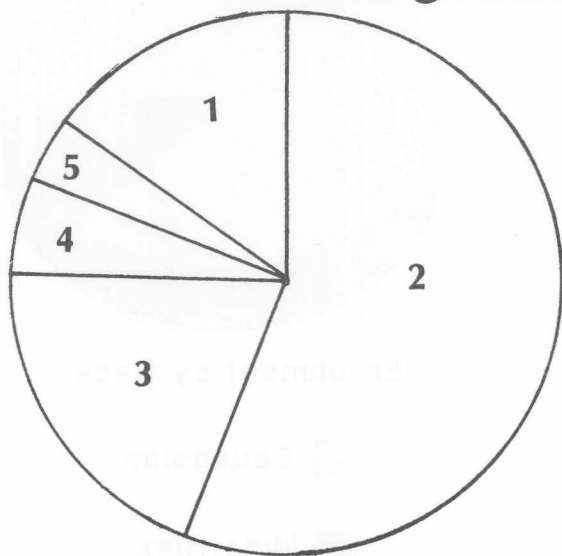


SOURCE: University System of Georgia Quarterly Enrollment Report

Geographic Distribution of Student Body

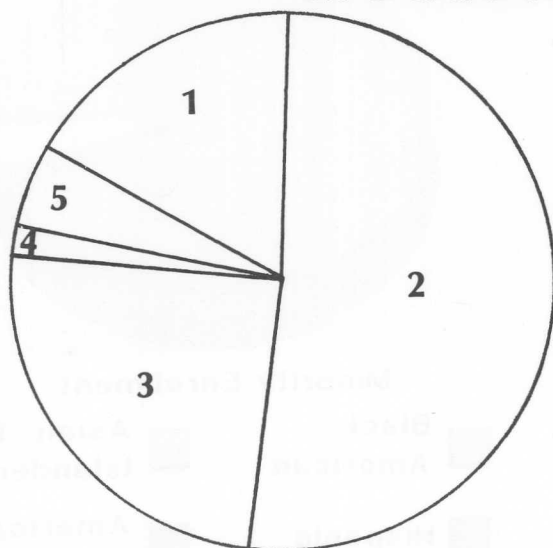
Fall 1986
West Georgia College

Undergraduate Students



- 1 Carroll County
- 2 50 Mile Radius *
- 3 50-100 Mile Radius
- 4 Over 100 Mile Radius
- 5 Out of State **

Graduate Students



- 1 Carroll County
- 2 50 Mile Radius *
- 3 50-100 Mile Radius
- 4 Over 100 Mile Radius
- 5 Out of State ***

SOURCE: Division of Budget and Research Services/Lamb *Excluding Carroll County

**Includes Foreign 0.4%

***Includes Foreign 1.0%

West Georgia College
**ENROLLMENT FROM COUNTIES IN
 PRIMARY SERVICE AREA AND
 FROM 5-COUNTY METRO AREA**

Fall 1986

County	Enrollment	County	Enrollment
Bartow	61	Haralson	195
Butts	12	Harris	15
Carroll	936	Heard	56
Catoosa	56	Henry	52
Chattooga	29	Lamar	20
Cherokee	38	Meriwether	45
Clayton	193	Monroe	10
Cobb	465	Murray	33
Coweta	328	Muscogee	41
Dade	8	Newton	26
Dawson	1	Paulding	87
DeKalb	542	Pickens	10
Douglas	352	Pike	10
Fannin	15	Polk	105
Fayette	165	Rockdale	58
Floyd	157	Spalding	81
Forsyth	21	Talbot	7
Fulton	483	Troup	121
Gilmer	8	Upson	22
Gordon	50	Walker	82
Gwinnett	294	Whitfield	166
		Total	5,456

5-County Metro Area 1,977
 (Clayton, Cobb, DeKalb, Fulton, Gwinnett)

SOURCE: Division of Budget and Research Services/Lamb

DETAILED COMPOSITION OF WGC STUDENT BODY

Fall Quarters 1979-1986

	Fall 1979	Fall 1980	Fall 1981	Fall 1982	Fall 1983	Fall 1984	Fall 1985	Fall 1986
Total Enrollment	5,051	5,271	5,660	6,050	6,351	6,250	5,980	6,141
Classification								
Freshman	1,145	1,289	1,537	1,840	2,086	1,898	1,545	1,629
Sophomore	786	946	936	1,133	1,111	1,130	995	936
Junior	606	620	649	694	796	807	853	820
Senior	634	638	695	703	692	748	878	954
Graduate	1,243	1,143	1,054	968	1,111	1,192	1,180	1,204
Developmental Studies	575	566	713	639	482	422	483	558
Others	62	69	76	73	73	53	46	40
Geographic								
Georgia Residents	4,870	5,129	5,501	5,866	6,133	6,056	5,781	5,929
Out-of-State	151	126	135	160	197	168	174	183
Other Countries	30	16	24	24	21	26	25	29
Sex								
Men	2,050	2,156	2,377	2,618	2,673	2,603	2,492	2,471
Women	3,001	3,115	3,283	3,432	3,678	3,647	3,488	3,670
Racial Mix								
White Male	1,806	1,918	2,057	2,316	2,389	2,291	2,215	2,181
White Female	2,428	2,583	2,762	2,926	3,158	3,112	2,992	3,122
Black Male	236	225	307	285	255	291	264	261
Black Female	560	515	504	487	493	513	486	516
Other Male	8	13	13	17	29	21	13	29
Other Female	13	17	17	19	27	22	10	32
New Students								
Total	1,667	1,894	2,154	2,245	2,074	1,875	1,670	1,860
Beginning Freshmen	594	745	931	1,160	1,036	942	739	799
Transfers	362	403	390	397	424	361	295	335
Graduate Students	295	285	266	220	223	205	222	258
Developmental Studies	416	461	567	468	391	367	414	468
*Attendance Status								
Full-time	3,029	3,265	3,641	4,061	4,099	3,963	3,575	3,592
Part-time	2,015	2,014	2,046	2,023	2,253	2,287	2,405	2,549

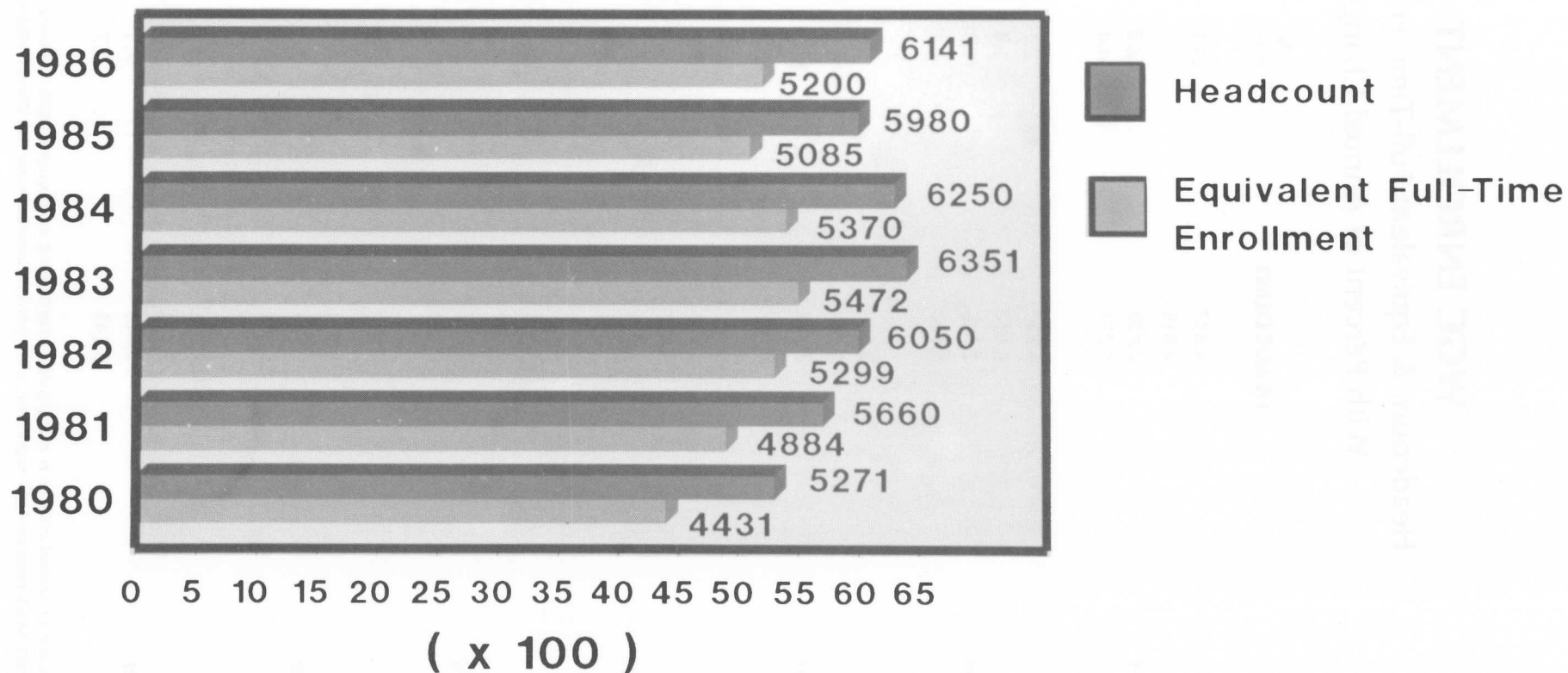
*Full-time is defined as 15 QCH per quarter.

SOURCE: University System of Georgia Quarterly Enrollment Report; Attendance Status Compiled by Budget and Research Services.

Frequency Chart

WGC Headcount & Equivalent Full-Time Enrollment

Fall 1980-1986



SOURCE: University System of Georgia Quarterly Enrollment Report

WGC ENROLLMENT

Headcount & Equivalent Full-Time Enrollment With Percent of Annual Change*

YEAR	HEADCOUNT	% + (-)	EFT**	% + (-)
1980				
Winter	4,817	(3.1)	4,031	1.1
Spring	4,815	(1.7)	3,864	0.4
Summer	2,638	(2.2)	1,792	(3.5)
Fall	5,271	4.4	4,431	4.8
1981				
Winter	4,917	2.1	4,152	3.0
Spring	4,882	1.4	3,992	3.3
Summer	2,546	(3.5)	1,694	(5.5)
Fall	5,660	7.4	4,884	10.2
1982				
Winter	5,390	9.6	4,632	11.6
Spring	5,207	6.7	4,338	8.7
Summer	2,474	(2.9)	1,728	2.0
Fall	6,050	6.9	5,299	8.5
1983				
Winter	5,786	7.4	5,018	8.3
Spring	5,597	7.5	4,685	8.0
Summer	2,513	1.6	1,703	(1.4)
Fall	6,351	5.0	5,472	3.3
1984				
Winter	6,025	4.1	5,182	3.3
Spring	5,657	1.1	4,740	1.2
Summer	2,632	4.7	1,753	2.9
Fall	6,250	(1.6)	5,370	(1.9)
1985				
Winter	5,837	(3.1)	5,007	(3.4)
Spring	5,643	(0.3)	4,717	(0.5)
Summer	2,719	3.3	1,890	7.8
Fall	5,980	(4.3)	5,085	(5.3)
1986				
Winter	5,788	(0.8)	4,939	(1.4)
Spring	5,453	(3.4)	4,511	(4.4)
Summer	2,913	7.1	1,957	3.5
Fall	6,141	2.7	5,200	2.3

*The percent of annual change is calculated by contrasting each quarter with the same quarter of the previous year, e.g., the Winter 1981 headcount of 4,917 represents a 2.1 percent increase over the Winter 1980 headcount enrollment of 4,817.

**Based on 15 QCH as full load for each student upon census date of quarterly enrollment report.

SOURCE: University System of Georgia Quarterly Enrollment Report.

West Georgia College
ADMISSIONS DATA
 Fall Quarters 1979-1986

	1979	1980	1981	1982	1983	1984	1985	1986
Total Students Enrolled	5051	5271	5660	6050	6351	6250	5980	6141
Total Graduate Students Enrolled	1243	1143	1054	968	1111	1192	1180	1204
Total Undergraduate Students Enrolled	3803	4128	4606	5082	5240	5058	4800	4937
Total New Students Enrolled	1667	1894	2154	2245	2131	1875	1670	1860
Total New Graduate Students Enrolled	295	285	266	220	272	205	222	258
Total New Undergraduate Students Enrolled	1372	1609	1888	2025	1859	1670	1448	1602
Total New Transfer Students Enrolled	318	353	332	347	332	333	266	311
Total New Freshmen Students Enrolled*	1010	1206	1498	1628	1485	1309	1153	1267
Total New Developmental Studies Students Enrolled	416	461	567	468	391	367	414	468
Total Students Housed	1794	2137	2537	2690	2525	2621	2390	2451
Total New Students Housed		1100	1445	1393	1134	1217	1054	1132

Total New Undergraduate Applicants	2321	2623	3443	3975	4115	3771	3342	3535
Total New Freshmen Applicants	1758	1951	2690	3163	3287	3058	2723	2869
Total New Transfer Applicants	508	652	683	755	770	668	565	615
Percentage of Applicants Accepted	82	80	77	76	76	73	73	74
Percentage of Accepted Applicants Enrolled	72	77	71	67	61	61	60	61
Percentage of Total Applicants Enrolled	59	61	55	51	45	45	43	45
Percentage of BSE Required Applicants Enrolled**	64	64	60	55	46	50	48	48
Total Freshman Applicants Rejected	28	19	89	239	352	424	361	332
Total Transfer Applicants Rejected	40	79	102	104	100	96	81	78
Total Cancelled Applications	123	109	178	173	175	181	177	204

*Figures include Developmental Studies freshmen and new transfer students required to take Developmental Studies Courses.

**BSE = Basic Skills Examination

SOURCE: Admissions Office

HISTORY OF CONTINUING EDUCATION PROGRAMS FOR FISCAL YEARS 1977-1986

Categories I and II

Year	Programs	Participants	CEUs
1976-77	158	5,258	6,781
1977-78	220	5,305	6,135
1978-79	233	4,201	5,899
1979-80	215	3,736	7,589
1980-81	275	4,752	7,029
1981-82	247	4,195	6,452
1982-83	314	5,899	9,039
1983-84	333	6,643	10,547
1984-85	351	6,018	13,576
1985-86	353	7,474	11,395

Report combines Category I programs (occupational related) and Category II programs (personal/social/cultural/recreational activities) which are conducted through the Division of Continuing Education/Public Services.

HISTORY OF PUBLIC SERVICE PROGRAMS FOR FISCAL YEARS 1977-1986

Category III

Year	Programs	Participants	CEUs
1976-77	102	9,282	4,421
1977-78	54	5,500	10,328
1978-79	21	4,261	15,112
1979-80	34	3,610	13,695
1980-81	39	4,283	18,561
1981-82	41	4,678	18,019
1982-83	43	6,667	16,485
1983-84	42	6,250	15,772
1984-85	40	6,682	17,147
1985-86	48	7,832	22,703

The Category III programs report the public service efforts of the College in supporting programs and projects conducted on campus by non-college organizations. Since 1977, these programs have been typically summer camps and cooperative programs. The majority of these programs are coordinated by the Auxiliary Enterprises Office.

SOURCE: Division of Continuing Education and Public Services.

West Georgia College
**RETENTION RATES OF
 FALL QUARTER FRESHMAN CLASSES**
 1976-1985

Quarters Following Freshman Fall		Percent of Fall 1976 Class	Percent of Fall 1977 Class	Percent of Fall 1978 Class	Percent of Fall 1979 Class	Percent of Fall 1980 Class	Percent of Fall 1981 Class	Percent of Fall 1982 Class	Percent of Fall 1983 Class	Percent of Fall 1984 Class	Percent of Fall 1985 Class
	Winter	85.96	84.19	84.88	85.67	83.32	86.19	84.61	87.02	84.15	89.36
	Spring	77.12	74.55	78.01	78.90	76.55	77.82	75.30	76.54	76.41	79.60
	Summer	10.90	8.80	10.25	11.52	12.55	8.83	8.94	8.79	9.77	11.33
Beginning Second Year	Fall	56.42	47.12	53.91	49.76	48.72	51.99	51.58	53.14	49.59	61.29
	Winter	48.79	42.20	46.51	40.95	40.79	45.48	45.32	47.33	45.76	
	Spring	43.70	38.01	44.29	38.04	37.08	41.10	40.88	43.07	42.00	
	Summer	9.08	9.53	13.53	10.16	10.90	10.03	9.73	10.01	9.99	
Beginning Third Year	Fall	34.87	28.80	35.20	33.30	32.37	35.52	34.25	36.17	35.54	
	Winter	32.08	27.12	32.03	30.78	30.22	31.41	31.69	34.62		
	Spring	29.18	27.43	31.08	29.72	28.82	28.62	30.78	32.86		
	Summer	14.29	12.57	14.06	13.17	12.39	12.75	12.47	15.08		
Beginning Fourth Year	Fall	25.67	25.34	28.86	27.59	26.67	26.63	29.08	30.76		
	Winter	24.46	23.25	27.48	24.78	26.59	25.17	28.16			
	Spring	23.49	21.99	24.95	24.01	25.02	23.51	26.46			
	Summer	10.77	11.31	11.31	14.04	12.30	12.95	13.26			
Beginning Fifth Year	Fall	13.68	12.46	15.64	17.42	16.27	16.80	19.89			
	Winter	9.81	9.11	11.73	13.36	12.88	14.08				
	Spring	7.75	8.83	9.73	9.68	10.57	10.29				
	Summer	4.12	4.50	4.97	4.55	5.37	5.38				

NOTE: Each number in the table represents the percentage of a Fall Quarter freshman class returning in subsequent quarters.

SOURCE: Division of Budget and Research Services/Stamps

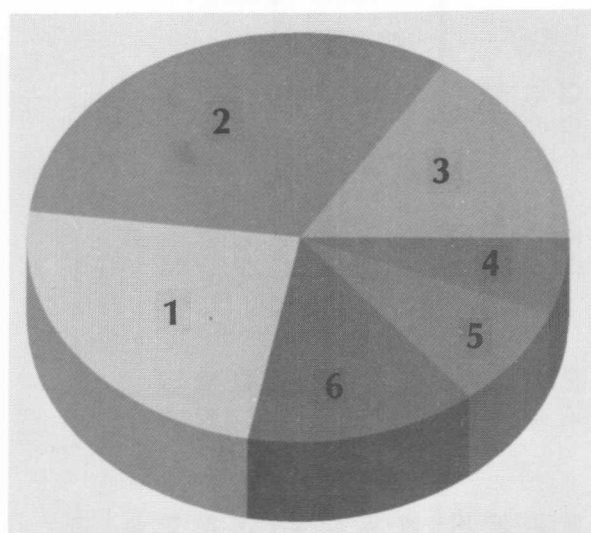
EXAMPLE: For the Fall Quarter Freshman Class of 1985, the retention rate one year later in the Fall Quarter of 1986 (the fourth quarter following Fall Quarter 1985) is 61.29%.

Age Distribution of Students

Fall 1982, Fall 1986

West Georgia College

Fall 1982



1 18 and Under

2 19-20

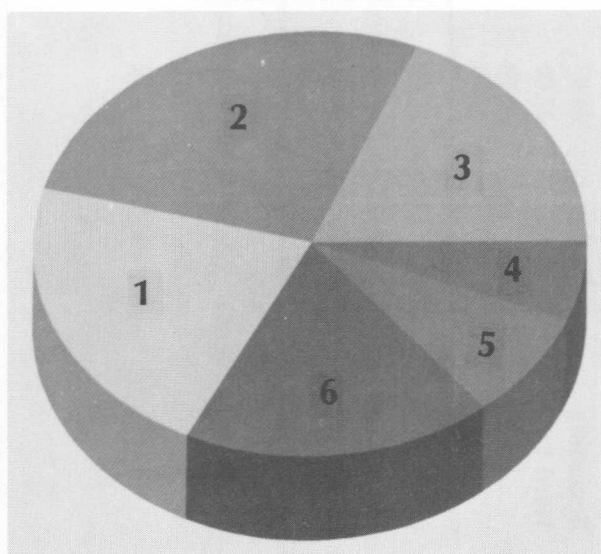
3 21-22

4 23-24

5 25-29

6 30 and Above

Fall 1986



HISTORY OF CHANGES IN AGES OF WGC STUDENTS

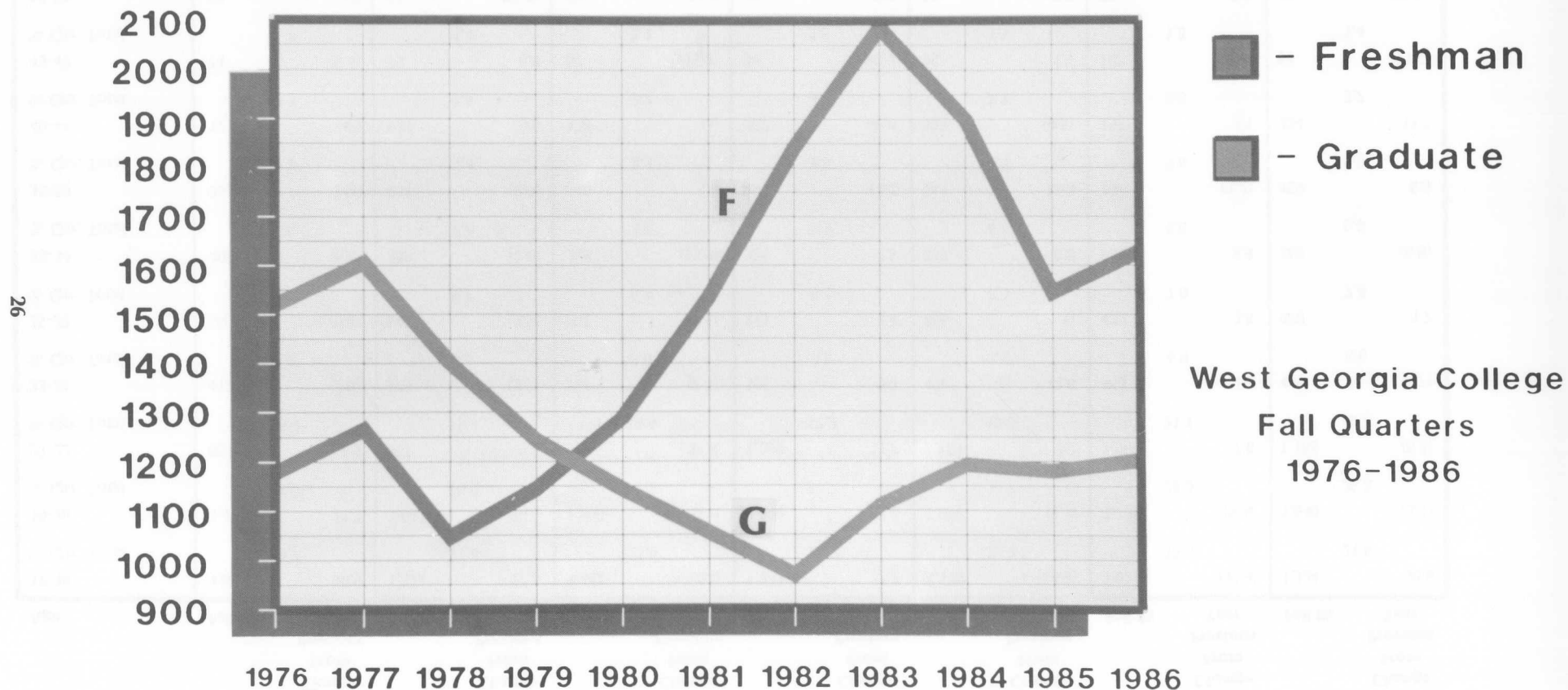
Fall 1980 - Fall 1986

Age	Fall 80	% Change From Previous Year	Fall 81	% Change From Previous Year	Fall 82	% Change From Previous Year	Fall 83	% Change From Previous Year	Fall 84	% Change From Previous Year	Fall 85	% Change From Previous Year	Fall 86	% Change From Previous Year
17-18	1,037	10.9	1,323	27.6	1,442	9.0	1,841	27.7	1,198	(34.9)	1,014	(15.4)	1,324	30.6
% Qtr. Total	19.7		23.4		23.8		21.2		19.3		16.9		21.6	
19-20	1,475	11.2	1,631	10.6	1,909	17.0	2,011	5.3	1,908	(5.1)	1,728	(9.4)	1,640	(5.1)
% Qtr. Total	28.0		28.9		31.6		31.7		30.7		28.8		26.8	
21-22	861	2.5	865	0.5	967	11.8	1,090	12.7	1,179	8.2	1,269	7.6	1,188	(6.4)
% Qtr. Total	16.4		15.3		16.0		17.2		19.0		21.1		19.4	
23-24	412	(2.6)	373	(9.5)	365	(2.1)	365	0.0	408	11.8	413	1.2	406	(1.7)
% Qtr. Total	7.8		6.6		6.0		5.8		6.6		6.9		6.6	
25-29	560	(9.4)	546	(2.5)	501	(8.2)	513	2.4	456	(11.1)	472	3.5	480	1.7
% Qtr. Total	10.6		9.7		8.3		8.1		7.3		7.9		7.8	
30-34	402	(5.0)	398	(1.0)	345	(13.3)	371	7.5	374	0.8	396	5.9	369	(6.8)
% Qtr. Total	7.6		7.0		5.7		5.9		6.0		6.6		6.0	
35-39	253	24.0	251	(0.8)	262	4.4	294	12.2	341	16.0	337	(1.2)	359	6.5
% Qtr. Total	4.8		4.4		4.3		4.6		5.5		5.6		5.9	
40-44	122	4.3	134	9.8	138	3.0	202	46.4	193	(4.5)	197	2.1	224	13.7
% Qtr. Total	2.3		2.4		2.3		3.2		3.1		3.3		3.7	
45-49	74	(8.6)	79	6.8	67	(15.2)	94	40.3	95	1.1	107	12.6	84	(21.5)
% Qtr. Total	1.4		1.4		1.1		1.5		1.5		1.8		1.4	
50-59	55	1.9	43	(21.8)	49	14.0	49	0.0	53	8.2	57	7.6	41	(28.1)
% Qtr. Total	1.1		0.8		0.8		0.8		0.9		0.9		0.7	
60 & above	14	27.3	7	(50.0)	8	14.3	6	(25.0)	12	100.0	15	25.0	4	(73.3)
% Qtr. Total	0.3		0.1		0.1		0.1		0.2		0.2		0.1	
Average Age of Student Body	23.7		23.2		22.8		23.2		23.5		23.9		23.5	

SOURCE: Division of Budget and Research Services/Lamb

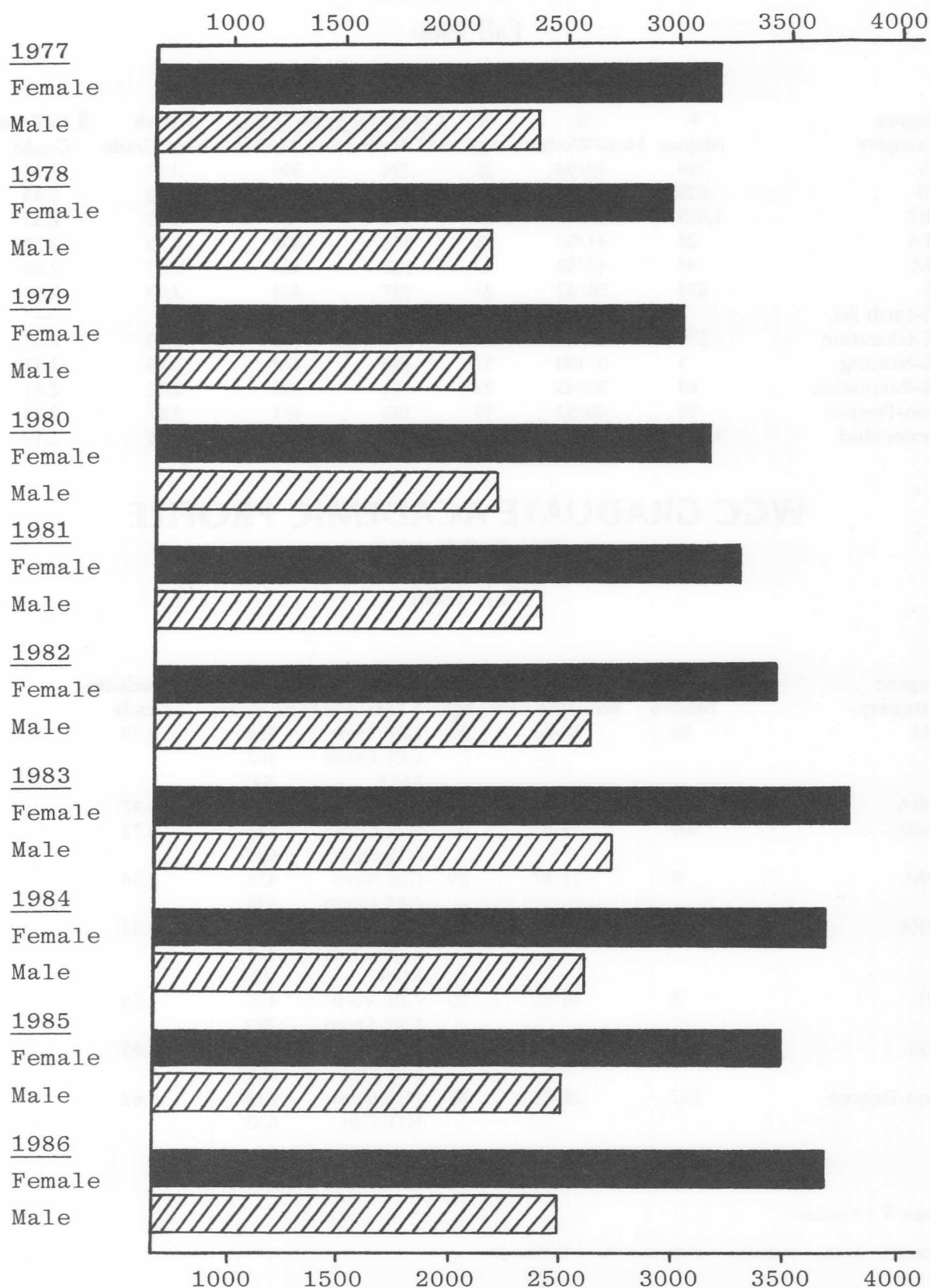
Frequency Chart

Freshmen and Graduate Enrollment



SOURCE: University System of Georgia Quarterly Enrollment Report

West Georgia College ENROLLMENT BY SEX



WGC UNDERGRADUATE ACADEMIC PROFILE BY DEGREE

Fall 1986

Degree Category	# Majors	% Men/Women	\bar{X} Age	\bar{X} Entrance Exam Scores		\bar{X} High School Grade	\bar{X} College Grade
				SAT Verbal	SAT MATH		
AS	194	10/90	25	394	386	2.93	2.36
AB	825	39/61	21	416	420	2.82	2.43
BBA	1,435	52/48	21	389	426	2.83	2.33
BFA	28	43/57	25	382	406	2.70	2.71
BM	48	42/58	22	397	427	2.83	2.60
BS	623	58/42	21	397	444	2.93	2.39
BS-Earth Sci.	0	—	—	—	—	—	—
BS-Education	576	24/76	22	391	410	2.90	2.57
BS-Nursing	1	0/100	32	480	470	3.40	2.17
BS-Recreation	69	55/45	22	354	389	2.86	2.41
Non-Degree	90	48/52	19	395	431	2.87	2.18
Undecided	1,048	47/53	19	395	424	2.75	2.19

WGC GRADUATE ACADEMIC PROFILE BY DEGREE

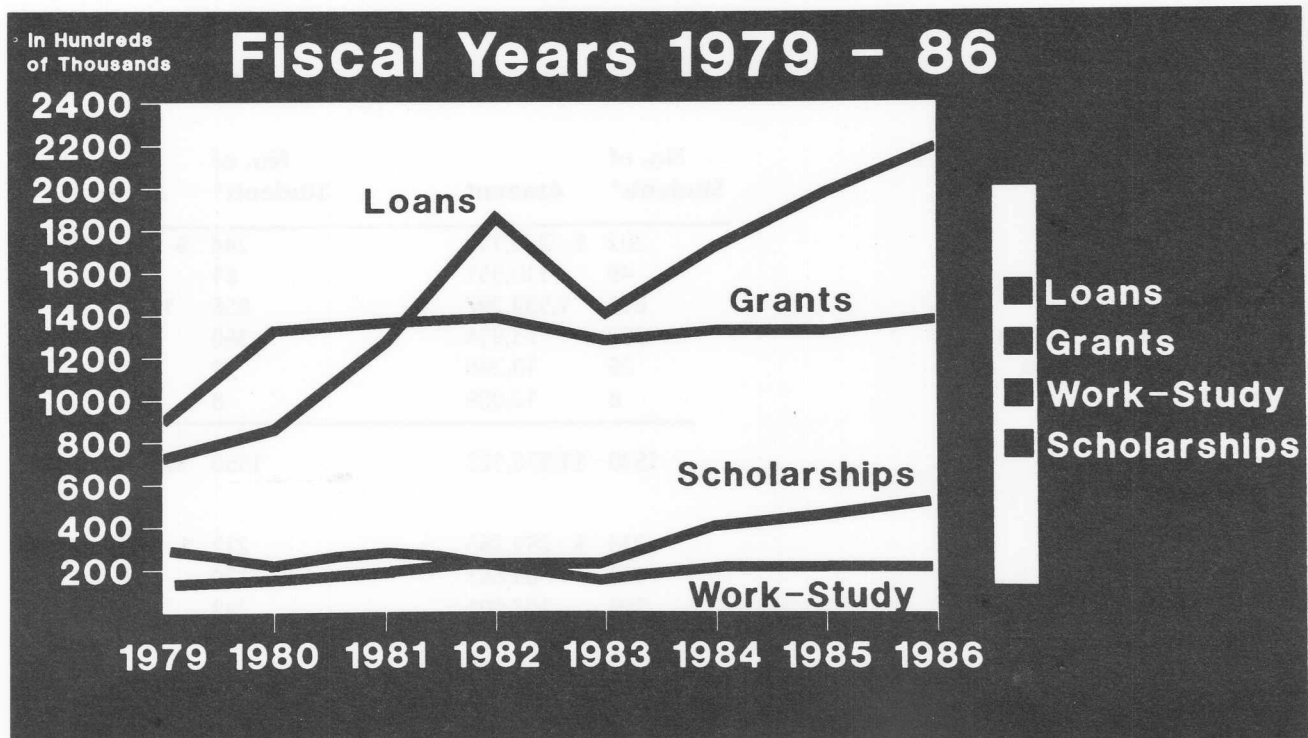
Fall 1986

Degree Category	# Majors	% Men/Women	\bar{X} Age	\bar{X} Entrance Exam Scores		\bar{X} Graduate Grade
				GRE Verb	GRE Quan	
MA	96	39/61	32	488	462	3.79
				MAT	54	
MBA	41	68/32	31	GMAT	501	3.47
MED	504	15/85	32	NTE Com	591	3.72
				NTE Opt	639	
MM	8	13/87	29	GRE Verb	473	3.94
				GRE Quan	538	
MPA	27	63/37	31	GRE Verb	431	3.32
				GRE Quan	451	
				MAT	43	
MS	5	40/60	29	GRE Verb	495	3.69
				GRE Quan	485	
EDS	277	24/76	38	NTE Com	610	3.80
				NTE Opt	651	
Non-Degree	242	25/75	36	NTE Com	610	3.62
				NTE Opt	650	

Note: \bar{X} = Average

SOURCE: Division of Budget and Research Services/Stamps

WGC Student Financial Aid



Fiscal Year	Loans	Scholarships	Grants	College Work-Study	Total
1979	\$ 724,970	\$121,965	\$ 896,403	\$283,509	\$2,026,847
1980	859,482	135,055	1,326,219	218,877	2,539,633
1981	1,271,226	181,343	1,362,647	266,671	3,081,887
1982	1,860,902	203,713	1,381,560	223,766	3,669,941
1983	1,401,448	233,453	1,274,881	154,907	3,064,689
1984	1,717,971	392,817	1,321,625	202,782	3,635,195
1985	1,976,123	447,927	1,322,765	198,132	3,944,947
1986	2,196,433	504,366	1,375,655	196,097	4,272,551

Number of Students Served*

Fiscal Year	Loans	Scholarships	Grants	College Work-Study	Total
1979	721	205	1031	394	2351
1980	870	316	1229	367	2782
1981	1171	281	1305	384	3141
1982	1362	313	1416	336	3427
1983	1282	337	1217	250	3086
1984	1313	499	1169	303	3284
1985	1391	512	1065	298	3266
1986	1390	534	976	280	3180

*Unduplicated headcount within categories of aid.
SOURCE: Financial Aid Office

West Georgia College

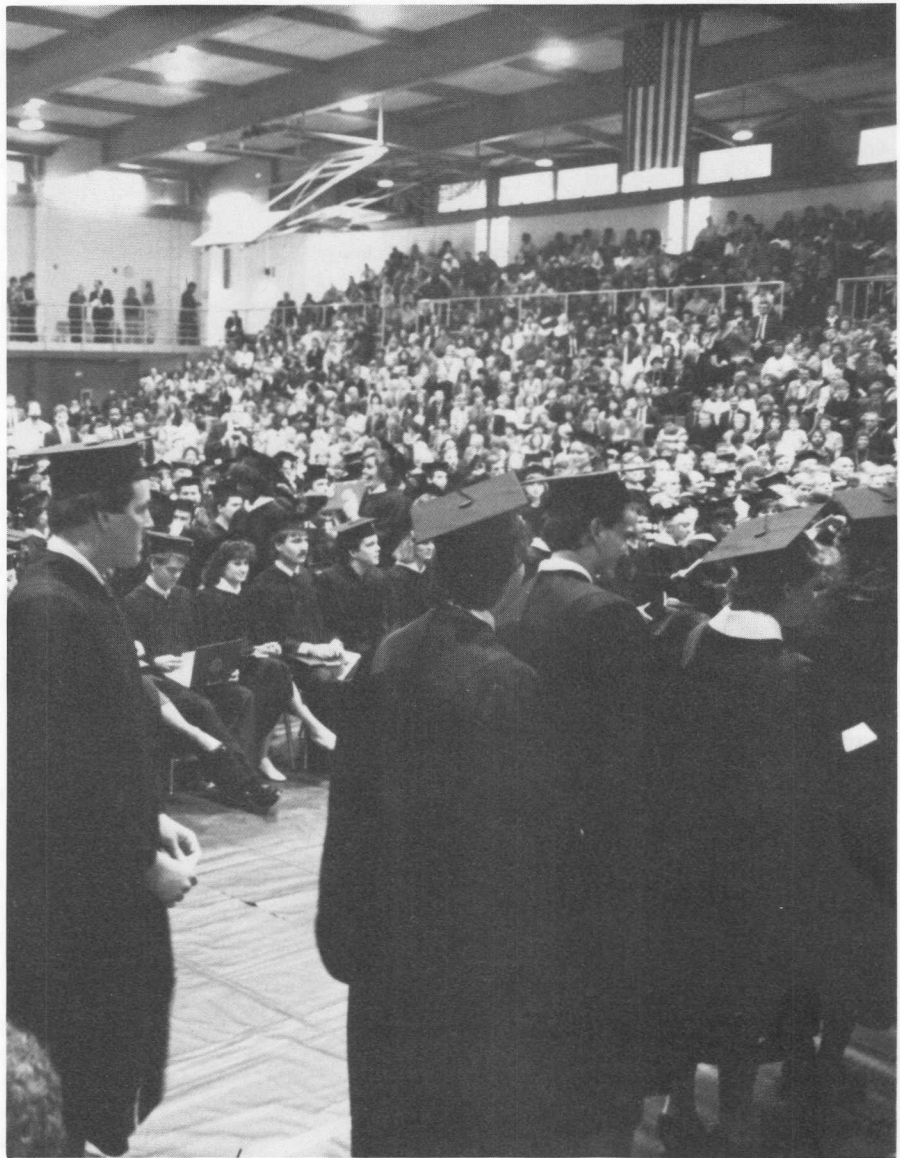
STUDENT FINANCIAL AID

	1984-1985		1985-1986	
	No. of Students*	Amount	No. of Students*	Amount
Loans				
NDSL	302	\$ 230,112	244	\$ 213,513
Federally Insured	49	110,551	61	128,740
State Guaranteed	843	1,539,297	856	1,703,776
WGC Emergency Loan	302	73,914	360	126,735
Regent's Scholarship	26	10,240	21	10,100
Private Loan	8	12,009	8	13,569
	1530	\$1,976,123	1550	\$2,196,433
Scholarships				
Institutional	238	\$ 259,263	212	\$ 266,101
Private	123	85,663	129	89,512
All Others	196	103,001	249	148,753
	557	\$ 477,927	590	\$ 504,366
Grants				
B.E.O.G.	964	\$1,064,284	867	\$1,131,211
S.E.O.G.	244	117,256	235	117,506
Vocational Rehabilitation	0	0	7	6,363
Ga. Incentive Scholarship	618	141,255	566	120,575
All Others	0	0	0	0
	1826	\$1,322,765	1,675	\$1,375,655
College Work Study	298	\$ 198,132	280	\$ 196,097
Total	4211	\$3,944,947	4,095	\$4,272,551

*Number of students in this display may represent a duplicated headcount. For example, a student receiving NDSL may also be receiving a WGC Emergency Loan. Therefore, a student will be counted twice in the Loans category.

SOURCE: Financial Aid Office

Degree Information



West Georgia College
**DEGREES AND MAJORS AUTHORIZED BY
 THE BOARD OF REGENTS**

Fall 1986

Associate of Arts

Education

Associate of Science

Computer Science
 Criminal Justice
 Nursing
 Office Administration

Bachelor of Arts

Anthropology
 Art
 Biology
 Chemistry
 English
 French
 Geography
 Geology
 History
 Mass Communication
 Mathematics
 Philosophy
 Physics
 Political Science
 Psychology
 Sociology
 Spanish
 Speech and Theatre Art

Bachelor of Business

Administration

Accounting
 Business Information
 Systems
 Economics
 Finance
 Management
 Marketing
 Office Administration

Bachelor of Fine Arts

Art

Bachelor of Music

Music Education
 Performance
 Theory & Composition

Bachelor of Science

Biology
 Chemistry
 Computer Science
 Criminal Justice
 Economics
 Geography
 Geology
 Mathematics/Computer Science
 Physics
 Political Science
 Sociology

**Bachelor of Science
 in Earth Science**

**Bachelor of Science
 in Education**

Business Education
 Early Childhood Education
 Middle Grades Education
 Physical Education
 Secondary Social Science
 Education
 Secondary Science Education
 Special Education
 Speech Pathology

**Bachelor of Science
 in Nursing**

**Bachelor of Science
 in Recreation**

Master of Arts

English
 History
 Mathematics
 Psychology
 Sociology

**Master of Business
 Administration**

Master of Music

Music Education
 Performance

**Master of Public
 Administration**

Master of Education

Administration &
 Supervision
 Art Education
 Business Education
 Early Childhood Education
 Guidance and Counseling
 Middle Grades Education
 Media
 Physical Education
 Reading Instruction
 Secondary Education
 Biology
 English
 Mathematics
 Science
 Social Studies
 Special Education
 Behavior Disorders/
 Emotional Disturbances
 Mental Retardation
 (EMR/TMR)
 Interrelated
 Specific Learning
 Disabilities
 Speech Pathology

Master of Science

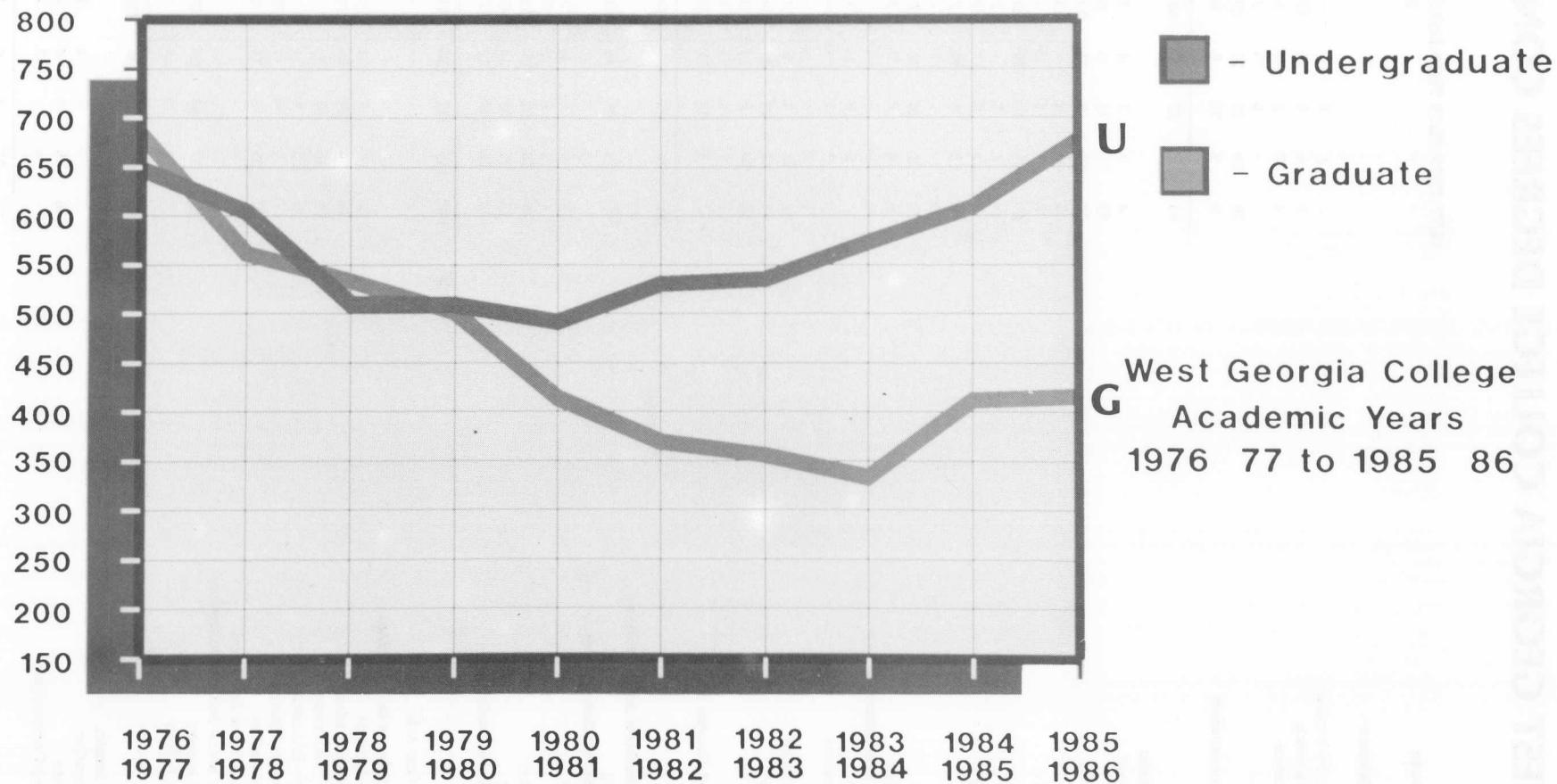
Biology

Specialist in Education

Administration &
 Supervision
 Business Education
 Early Childhood Education
 Guidance & Counseling
 Middle Grades Education
 Reading Instruction
 Secondary Education
 English
 Mathematics
 Science
 Social Studies
 Special Education

SOURCE: WGC Undergraduate Catalog, 1986-87

UNDERGRADUATE AND GRADUATE DEGREES CONFERRED



SOURCE: University System of Georgia Quarterly Enrollment Report

WEST GEORGIA COLLEGE DEGREES CONFERRED

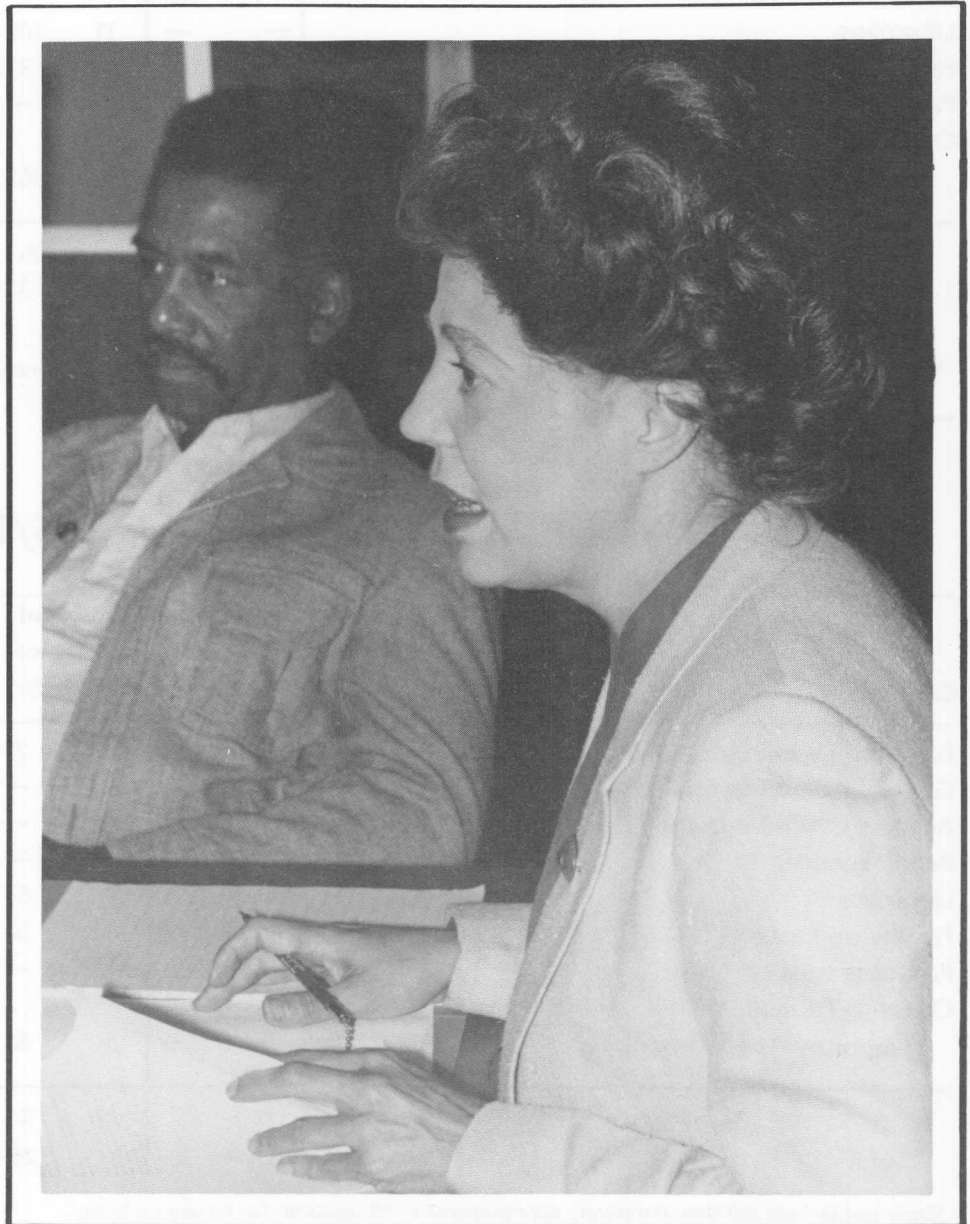
	76/77	77/78	78/79	79/80	80/81	81/82	82/83	83/84	84/85	85/86
Associate of Arts:										
Education	-	-	-	-	2	2	-	-	-	1
Associate of Science										
Accounting Technology	-	2	3	1	-	2	2	-	-	-
Computer Science	7	6	5	5	13	14	18	19	14	12
Criminal Justice	4	17	5	4	5	1	2	3	5	3
Marketing	-	-	6	3	2	3	5	-	1	-
Nursing	28	24	26	23	22	24	35	29	24	22
Office Administration	4	9	12	5	6	5	6	9	9	7
Total	43	58	57	41	48	49	68	60	53	44
Bachelor of Arts:										
Anthropology	4	1	1	4	1	0	2	1	-	2
Art	13	15	12	8	8	12	16	13	9	9
Biology	26	12	5	14	12	5	3	6	5	6
Chemistry	3	8	4	-	3	2	7	4	3	1
Economics	2	2	1	1	-	1	2	2	-	-
English	21	16	12	10	13	13	6	22	11	13
French	-	1	1	-	2	1	2	3	3	5
Geography	2	2	5	7	2	2	-	5	1	2
Geology	10	9	5	10	7	2	-	-	-	1
German	1	-	-	1	-	-	-	-	-	-
History	23	22	20	16	16	10	11	16	6	11
Mathematics	8	8	7	3	3	1	1	-	2	2
Mass Communication	-	-	-	-	-	-	2	15	34	39
Philosophy	-	2	6	-	1	1	-	1	-	1
Physical Science	-	1	1	-	-	-	-	-	-	-
Physics	1	2	-	-	-	-	-	-	-	-
Political Science	12	14	1	9	7	10	3	5	5	5
Psychology	41	37	29	29	34	29	31	31	24	32
Sociology	25	18	6	13	9	6	6	1	3	2
Spanish	2	1	4	3	1	1	1	3	2	1
Speech and Theatre Art	7	3	13	14	15	16	22	11	7	3
Total	201	174	133	142	134	112	115	139	115	135
Bachelor of Business Administration:										
Accounting	45	53	41	40	33	29	47	37	41	42
Business Information Systems	-	-	-	-	-	-	-	3	8	18
Economics	15	6	5	2	5	9	4	4	6	8
Finance	7	2	6	5	5	14	4	14	13	12
Management	35	46	52	55	53	48	69	51	53	72
Marketing	15	28	24	24	40	35	37	68	76	82
Office Administration	12	14	14	12	7	17	3	10	11	15
Total	140	155	142	138	143	152	164	187	208	249
Bachelor of Fine Arts	-	-	-	-	-	-	-	-	1	5
Bachelor of Science in Education:										
Business Education	7	9	7	1	5	9	6	3	4	2
Early Childhood Education	44	39	33	40	41	45	47	46	36	40
Elementary Education	52	36	42	34	-	-	-	-	-	-
Junior High Education	6	3	4	-	-	-	-	-	-	-
Middle Grades Education	-	-	-	-	25	20	18	16	25	18
Physical Education	20	18	12	14	6	21	17	18	22	18
Secondary Science Education	-	-	-	-	-	-	-	-	-	1
Secondary Social Science Education	-	-	-	-	-	2	5	6	6	7
Special Education	32	17	14	17	17	25	10	14	9	14
Speech Pathology	-	-	-	-	-	-	-	-	1	3
Total	162	122	112	106	94	122	103	103	103	103
Bachelor of Music:										
Music Education	-	-	-	4	3	4	3	1	2	2
Performance	10	15	4	4	-	1	3	2	3	3
Theory and Composition	-	-	-	1	-	1	-	-	-	-
Total	10	15	4	9	3	6	6	3	5	5

SOURCE: President's Annual Reports, 1976/77 to 1985/86

DEGREES CONFERRED *Continued*

	76/77	77/78	78/79	79/80	80/81	81/82	82/83	83/84	84/85	85/86
Bachelor of Science:										
Biology	-	-	-	-	5	7	3	6	5	9
Chemistry	2	1	-	-	-	4	1	-	2	2
Computer Science	-	-	-	-	-	-	1	10	19	31
Criminal Justice	-	-	3	15	14	16	12	15	30	16
Economics	-	-	-	-	-	-	-	1	1	-
Geography	16	13	2	6	7	7	5	4	4	8
Geology	-	-	-	3	4	13	7	8	10	12
Mathematics/Computer Science	-	-	-	-	2	2	5	5	7	10
Physics	2	3	3	-	2	4	5	3	3	6
Political Science	6	6	8	10	5	6	9	7	12	3
Political Science (Pre-Law)	-	2	6	-	-	-	-	-	-	-
Sociology	44	37	31	22	11	15	9	10	22	20
Total	70	62	53	56	50	74	57	69	115	117
Bachelor of Science in Earth Science:	1	3	1	1	-	-	1	1	-	-
Bachelor of Science in Nursing	-	-	-	-	-	-	-	-	-	-
Bachelor of Science in Recreation:	21	15	8	16	17	13	21	11	9	18
Master of Arts:										
English	8	8	5	2	4	2	1	4	-	2
History	11	3	4	2	2	5	3	5	1	-
Mathematics	2	2	-	1	-	-	1	-	-	-
Psychology	100	112	84	92	45	25	32	29	33	28
Sociology	5	3	3	2	2	3	-	1	2	-
Total	126	128	96	99	53	35	37	39	36	30
Master of Business Administration:	15	15	13	17	8	15	8	9	14	12
Master of Education:										
Administration and Supervision	33	39	30	16	12	14	9	6	8	8
Art Education	-	-	-	-	-	-	-	3	-	-
Business Education	19	10	10	6	7	4	11	12	5	11
Early Childhood Education	60	52	62	81	68	57	80	41	56	45
Elementary Education	146	102	88	67	-	-	-	-	-	-
Guidance and Counseling	53	57	32	28	31	21	9	13	16	18
Junior High Education	5	2	2	-	1	-	-	-	-	-
Middle Grades Education	-	-	-	-	50	52	37	38	31	41
Media	15	16	24	12	12	7	16	9	8	8
Physical Education	4	2	21	15	17	11	6	16	14	9
Reading Instruction	17	7	7	9	5	3	6	1	2	1
Secondary Education	64	50	42	50	35	28	19	25	18	22
Special Education	65	49	55	30	38	40	42	30	41	32
Speech Pathology	-	-	-	-	-	-	-	-	-	6
Total	481	386	373	314	276	237	235	194	199	201
Master of Music:										
Music Education	-	-	-	3	-	2	2	2	5	3
Performance	-	-	-	2	5	2	0	2	1	2
Total	-	-	-	5	5	4	2	4	6	5
Master of Public Administration:	-	-	-	-	-	-	2	2	5	2
Master of Science:										
Biology	1	2	5	3	2	3	2	2	2	2
Specialist in Education:										
Administration and Supervision	17	13	10	16	20	12	18	19	25	49
Business Education	1	1	-	4	5	12	16	3	16	8
Early Childhood Education	2	2	3	8	5	11	12	13	36	53
Elementary Education	18	7	15	18	-	-	-	-	-	-
Guidance and Counseling	13	6	12	12	18	24	11	20	23	15
Middle Grades Education	-	-	-	-	9	8	8	9	16	12
Reading Instruction	-	-	-	-	-	-	-	-	3	1
Secondary Education	9	1	6	5	13	1	4	9	7	8
Special Education	-	-	-	-	-	6	1	10	24	18
Total	60	30	46	63	70	74	70	83	150	164
Total Number of Degrees by Level										
Education Specialist	60	30	46	63	70	74	70	83	150	164
Masters	623	531	487	438	344	295	286	250	262	252
Bachelor	605	546	453	468	441	479	467	513	556	632
Associate	43	58	57	41	50	51	68	60	53	45
Total	1,331	1,165	1,043	1,010	905	899	891	906	1,021	1,093

Faculty Information



WGC FACULTY PROFILE DISTRIBUTION BY HIGHEST DEGREE, 1985/86

Category	Doctorates		Masters/ Education Specialist		Other***		Total N
	N	%	N	%	N	%	
Full-time Teaching Faculty*	137	67	65	32	3	1	205
General Administrators	4	100	—	—	—	—	4
Academic Administrators	29	88	4	12	—	—	33
Public Service	1	100	—	—	—	—	1
Librarians	—	—	11	100	—	—	11
Faculty on Leave	2	67	1	33	—	—	3
Part-time Faculty**	—	—	—	—	—	—	—
Other (F-T Faculty with Temporary Assignments)	3	38	5	62	—	—	8
Total	N 176	% 66	N 86	% 33	N 3	% 1	N 265

*Does not include full-time temporary appointments to fill positions for faculty on leave.

**Includes only those part-time faculty who are on an academic year contract; does not include part-time faculty who are hired on a per course, per quarter basis as needed.

***Includes Professional, Bachelors, and Miscellaneous Degrees.

WGC FACULTY PROFILE DISTRIBUTION BY RANK, 1985/86

Category	Professor		Associate Professor		Assistant Professor		Instructor		Total N
	N	%	N	%	N	%	N	%	
Full-time Teaching Faculty*	50	24	69	34	60	29	26	13	205
General Administrators	2	50	2	50	—	—	—	—	4
Academic Administrators	27	82	6	18	—	—	—	—	33
Public Service	—	—	1	100	—	—	—	—	1
Librarians	—	—	1	9	7	64	3	27	11
Faculty on Leave	1	33	1	33	1	34	—	—	3
Part-time Faculty**	—	—	—	—	—	—	—	—	—
Other (F-T Faculty with Temporary Appointments)	1	12	—	—	5	63	2	25	8
Total	N 81	% 30	N 80	% 30	N 73	% 28	N 31	% 12	N 265

*Does not include full-time temporary appointments to fill positions for faculty on leave.

**Includes only those part-time faculty who are on an academic year contract; does not include part-time faculty who are hired on a per course, per quarter basis as needed.

SOURCE: Division of Budget and Research Services and the Office of the Vice President and Dean of Faculties.

WGC FACULTY PROFILE DISTRIBUTION BY TENURE STATUS, 1985/86

Category	Tenured		Non-Tenured		Total N
	N	%	N	%	
Full-time Teaching Faculty*	127	62	78	38	205
General Administrators	4	100	—	—	4
Academic Administrators	27	82	6	18	33
Public Service	1	100	—	—	1
Librarians	2	18	9	82	11
Faculty on Leave	2	67	1	33	3
Part-time Faculty**	—	—	—	—	—
Other (F-T Faculty with Temporary Appointments)	—	—	8	100	8
Total	N 163	% 62	N 102	% 38	N 265

*Does not include full-time temporary appointments to fill positions for faculty on leave.

**Includes only those part-time faculty who are on an academic year contract; does not include part-time faculty who are hired on a per course, per quarter basis as needed.

WGC FACULTY PROFILE DISTRIBUTION BY SEX, 1985/86

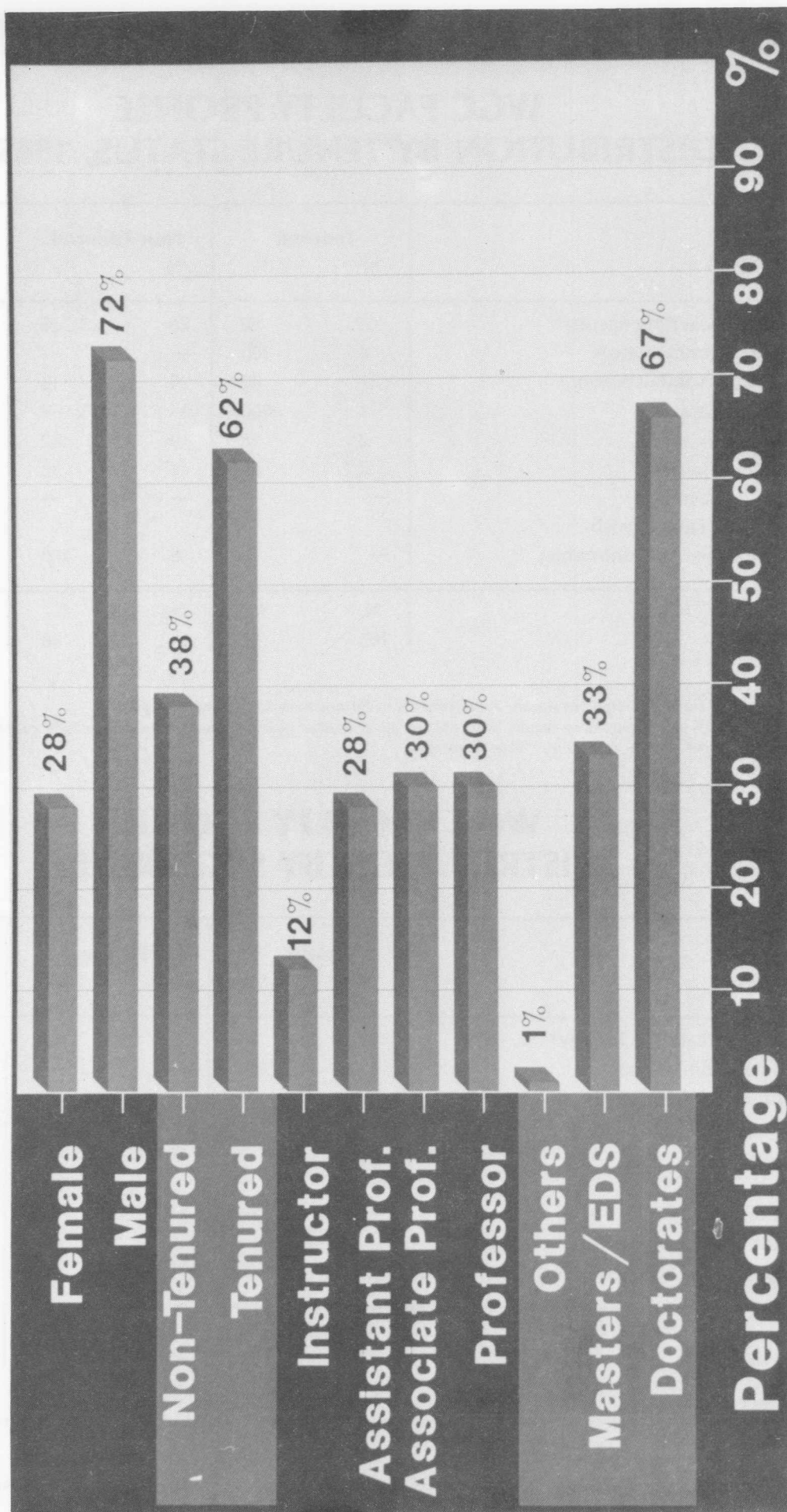
Category	Male		Female		Total N
	N	%	N	%	
Full-time Teaching Faculty*	151	74	54	26	205
General Administrators	4	100	—	—	4
Academic Administrators	28	85	5	15	33
Public Service	1	100	—	—	1
Librarians	1	9	10	91	11
Faculty on Leave	—	—	3	100	3
Part-time Faculty**	—	—	—	—	—
Other (F-T Faculty with Temporary Appointments)	7	88	1	12	8
Total	N 192	% 72	N 73	% 28	N 265

*Does not include full-time temporary appointments to fill positions for faculty on leave.

**Includes only those part-time faculty who are on an academic year contract; does not include part-time faculty who are hired on a per course, per quarter basis as needed.

SOURCE: Division of Budget and Research Services and the Office of the Vice President and Dean of Faculties.

WGC Faculty Profile 1985-86



Financial Information



West Georgia College
**EDUCATIONAL AND GENERAL BUDGET
EXPENDITURES**

	TOTAL BUDGET	Personal Services	Travel	Operating Supplies & Expenses	Equipment
FISCAL YEAR 1987 BUDGET					
Instruction	\$12,926,587	\$12,011,232	\$145,262	\$ 454,055	\$316,038
Research	1,140,705	396,005	87,700	637,000	20,000
Academic Support	2,515,977	1,878,456	25,075	405,870	206,576
Student Services	1,429,531	1,274,872	28,950	121,709	4,000
Institutional Support	3,363,908	2,851,293	25,233	481,643	5,739
Operation & Maintenance of Plant	2,615,130	1,362,570	2,209	1,210,351	40,000
Scholarships & Fellowships	850,000			850,000	
Sub-total	\$24,841,838	\$19,774,428	\$314,429	\$4,160,628	\$592,353
Lapse Estimate	(105,000)	(283,116)		178,116	
TOTALS	\$24,736,838	\$19,491,312	\$314,429	\$4,338,744	\$592,353

FISCAL YEAR 1986 EXPENDITURES					
Instruction	\$12,337,876	\$11,407,302	\$123,053	\$ 489,137	\$ 818,384
Research	116,619	56,831	10,218	31,171	18,399
Academic Support	2,596,157	1,775,841	25,743	334,522	460,051
Student Services	1,433,579	1,242,190	31,095	146,240	14,054
Institutional Support	3,409,495	2,577,207	27,393	641,351	163,544
Operation & Maintenance of Plant	2,625,555	1,349,719	1,912	1,220,354	53,570
Scholarships & Fellowships	1,375,222			1,375,222	
TOTALS	\$23,894,503	\$18,409,090	\$219,414	\$4,237,997	\$1,028,002

FISCAL YEAR 1985 EXPENDITURES					
Instruction	\$10,047,340	\$ 9,039,592	\$128,644	\$ 582,045	\$297,059
Research	89,019	57,939	9,633	17,347	4,100
Academic Support	1,793,309	999,111	13,188	374,356	406,654
Student Services	1,088,991	916,660	29,515	127,053	15,763
Institutional Support	5,602,681	4,964,484	19,524	587,995	30,678
Operations & Maintenance of Plant	2,432,218	1,258,446	2,091	1,105,641	66,040
Scholarships & Fellowships	1,287,394			1,287,394	
TOTALS	\$22,340,952	\$17,236,232	\$202,595	\$4,081,831	\$820,294

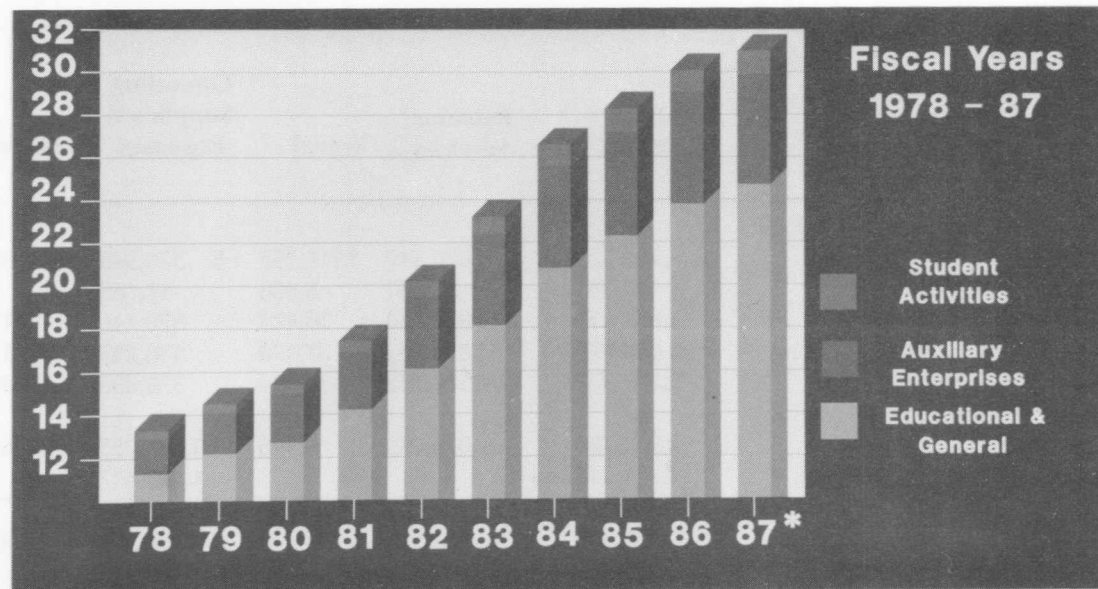
West Georgia College
**EDUCATIONAL AND GENERAL BUDGET
EXPENDITURES**

	TOTAL BUDGET	Personal Services	Travel	Operating Supplies & Expenses	Equipment
FISCAL YEAR 1984 EXPENDITURES					
Instruction	\$ 9,457,625	\$ 8,670,447	\$116,755	\$ 570,548	\$ 99,875
Research	60,203	38,361	8,996	11,185	1,661
Academic Support	1,625,418	933,130	10,423	370,146	311,719
Student Services	1,043,975	881,162	27,470	118,297	17,046
Institutional Support	5,195,987	4,557,752	11,182	578,893	48,160
Operations & Maintenance of Plant	2,201,784	1,075,663	1,546	1,055,255	69,320
Scholarships & Fellowships	1,271,417			1,271,417	
TOTALS	\$20,856,409	\$16,156,515	\$176,372	\$3,975,741	\$547,781
FISCAL YEAR 1983 EXPENDITURES					
Instruction	\$ 9,029,434	\$ 8,372,849	\$ 87,089	\$ 448,020	\$ 81,476
Research	60,435	38,249	7,187	13,752	1,247
Academic Support	1,467,319	871,338	7,819	266,989	321,173
Student Services	973,837	838,963	19,556	105,920	9,398
Institutional Support	3,293,056	2,767,299	9,703	456,495	59,559
Operation & Maintenance of Plant	2,122,430	1,020,757	473	1,089,766	11,434
Scholarships & Fellowships	1,217,303			1,217,303	
TOTALS	\$18,163,814	\$13,909,455	\$131,827	\$3,638,245	\$484,287
FISCAL YEAR 1982 EXPENDITURES					
Instruction	\$ 8,393,434	\$ 7,617,918	\$128,542	\$ 488,399	\$158,575
Research	107,696	70,715	10,866	24,237	1,880
Academic Support	1,425,266	831,726	17,953	321,133	254,454
Student Services	909,632	771,332	23,802	103,191	11,307
Institutional Support	3,031,670	2,391,532	22,308	561,568	56,262
Operations & Maintenance of Plant	2,150,637	1,082,419	1,764	1,021,575	44,879
Scholarships & Fellowships	150,487			150,487	
TOTALS	\$16,168,824	\$12,765,642	\$205,235	\$2,670,590	\$527,357

SOURCE: Division of Budget and Research Services/Inman

WGC General Budget Growth

Budget (in millions)



* FY 87 Figures Represent Budgeted Amounts.

West Georgia College operates through the use of three major budgets:

- (1) **The Educational and General (E & G) budget** includes funds received from state appropriations, internal revenues (tuition and fees) and externally funded research grants. E & G funds are used for instruction, research, academic support, student services, institutional support and plant operations.
- (2) **The Auxiliary Enterprises budget** includes funds received from food services, housing, the bookstore, and vending machines, and the funds are used to operate each of these activities.
- (3) **The Student Activities budget** includes the revenues from activity fees and gate receipts, such as sporting events. These funds are then used to finance some campus student activities such as the debate team, student government, athletic programs, lecture series and concerts.

West Georgia College
**DISTRIBUTION OF EDUCATIONAL AND GENERAL
 REVENUE BY SOURCE**
 FY 1982 - FY 1987

Source of Funds	FY 1982		FY 1983		FY 1984		FY 1985		FY 1986		FY 1987 (Budgeted)	
Internal Revenue												
Student Tuition & Fees	\$ 3,164,372	19.56%	\$ 3,926,009	21.60%	\$ 4,667,925	22.37%	\$ 5,248,095	23.48%	\$ 5,751,561	24.09%	\$ 6,127,000	24.77%
Gifts, Grants & Contracts	0		0		8,800	.04	6,763	.03	5,235	.02	0	
Indirect Cost Recoveries	19,227	.12	27,206	.15	21,671	.10	24,614	.11	23,037	.10	0	
Sales & Service of Educational Depts.	29,954	.19	36,848	.20	41,069	.20	69,617	.31	72,930	.31	65,000	.26
Other Sources	80,227	.50	100,477	.55	65,458	.31	66,951	.30	73,856	.31	65,000	.26
Total Internal Revenue	\$ 3,293,780	20.37%	\$ 4,090,540	22.50%	\$ 4,804,923	23.03%	\$ 5,416,040	24.23%	\$ 5,926,619	24.83%	\$ 6,257,000	25.29%
State Appropriation	12,092,236	74.76	12,275,034	67.53	14,065,200	67.42	14,993,200	67.07	15,959,200	66.86	16,334,838	66.03
Total General Operations	\$15,386,016	95.13%	\$16,365,574	90.03%	\$18,870,123	90.46%	\$20,409,240	91.30%	\$21,885,819	91.69%	\$22,591,838	91.32%
Departmental Sales & Services	70,004	.43	98,077	.54	134,466	.64	127,005*	.57	129,782	.54	150,000	.61
Sponsored Operations	718,824	4.44	1,713,151	9.43	1,856,565	8.90	1,817,841	8.13	1,855,407	7.77	1,995,000	8.06
Total Educational & General Revenue	\$16,174,844	100.00%	\$18,176,802	100.00%	\$20,861,154	100.00%	\$22,354,086*	100.00%	\$23,871,008	100.00%	\$24,736,838	100.00%

*Excludes Quasi-Revenue

SOURCE: Division of Budget and Research Services/Inman

West Georgia College

DISTRIBUTION OF EDUCATIONAL AND GENERAL EXPENDITURES BY FUNCTION

FY 1982 - FY 1987

Function	FY 1982	FY 1983	FY 1984	FY 1985	FY 1986	FY 1987 (Budgeted)
Instruction						
School of Arts & Sciences	\$ 4,637,913	\$ 4,965,727	\$ 5,278,255	\$ 5,439,456	\$ 6,980,752	\$ 7,293,338
School of Business	1,079,794	1,189,574	1,297,048	1,313,113	1,647,506	1,845,396
School of Education	1,837,820	2,290,420	2,264,682	2,233,589	2,610,522	2,865,136
Other Instruction	837,907	583,713	617,639	1,061,182	1,099,096	922,717
Total Instruction	\$ 8,393,434	\$ 9,029,434	\$ 9,457,624	\$ 10,047,340	\$ 12,337,876	\$ 12,926,587
Research	107,699	60,435	60,203	89,019	116,619	1,140,705
Academic Support	1,425,266	1,467,320	1,625,418	1,793,309	2,596,157	2,515,977
Student Services	909,632	973,836	1,043,975	1,088,991	1,433,579	1,429,531
Institutional Support	3,031,670	3,293,056	5,195,987	5,602,681	3,409,495	3,363,908
Operation & Maintenance of Plant	2,150,637	2,122,430	2,201,784	2,432,218	2,625,555	2,615,130
Scholarships & Fellowships	150,487	1,217,303	1,271,417	1,287,394	1,375,222	850,000
Total Expenditures	\$ 16,168,825	\$ 18,163,814	\$ 20,856,408	\$ 22,340,952	\$ 23,894,503	\$ 24,841,838
	100.00%	100.00%	100.00%	100.00%	100.00%	100.00%

SOURCE: Division of Budget and Research Services/Inman

West Georgia College
**TOTAL EDUCATIONAL & GENERAL EXPENDITURES
 PER EQUIVALENT FULL-TIME STUDENT (EFT)**

FY 1982 - FY 1987*

Fiscal Year	Educational & General Expenditures	Fall Quarter Equivalent Full-Time Enrollment (EFT)	Total Educational & General Expenditure Per Equivalent Full-Time Student
1981-82	\$16,168,824	4,884	\$3,311
1982-83	\$18,163,814	5,299	\$3,428
1983-84	\$20,856,408	5,472	\$3,811
1984-85	\$22,340,952	5,370	\$4,160
1985-86	\$23,894,503	5,085	\$4,699
1986-87*	\$24,736,838	5,200	\$4,757

*FY 1987 figures represent budget amounts.

SOURCE: Division of Budget and Research Services/Inman

West Georgia College
AVERAGE SALARY BY EMPLOYEE CATEGORY

FY 1982 - FY 1987

Category	FY 1982	FY 1983	FY 1984	FY 1985	FY 1986	FY 1987*
Faculty						
Professor	66 \$28,821	74 \$30,854	75 \$32,556	70 \$34,702	75 \$36,412	79 \$38,046
Associate Professor	70 \$24,115	79 \$25,402	77 \$26,902	78 \$28,059	74 \$29,898	70 \$31,324
Assistant Professor	76 \$19,946	66 \$21,186	68 \$22,700	67 \$23,564	69 \$25,675	65 \$27,388
Instructor	30 \$15,484	29 \$16,185	27 \$17,137	28 \$17,854	28 \$19,071	26 \$20,024
TOTAL—Faculty	242 \$23,019	248 \$24,829	247 \$26,395	243 \$27,557	246 \$29,467	240 \$31,246
Administrative Staff	82 \$24,345	83 \$25,379	82 \$25,981	86 \$27,667	85 \$30,116	87 \$31,256
Clerical Staff	148 \$10,851	148 \$11,437	150 \$12,646	151 \$13,111	175 \$13,625	174 \$14,063
Maintenance	158 \$10,843	156 \$10,739	178 \$12,467	160 \$12,613	127 \$13,101	135 \$14,005

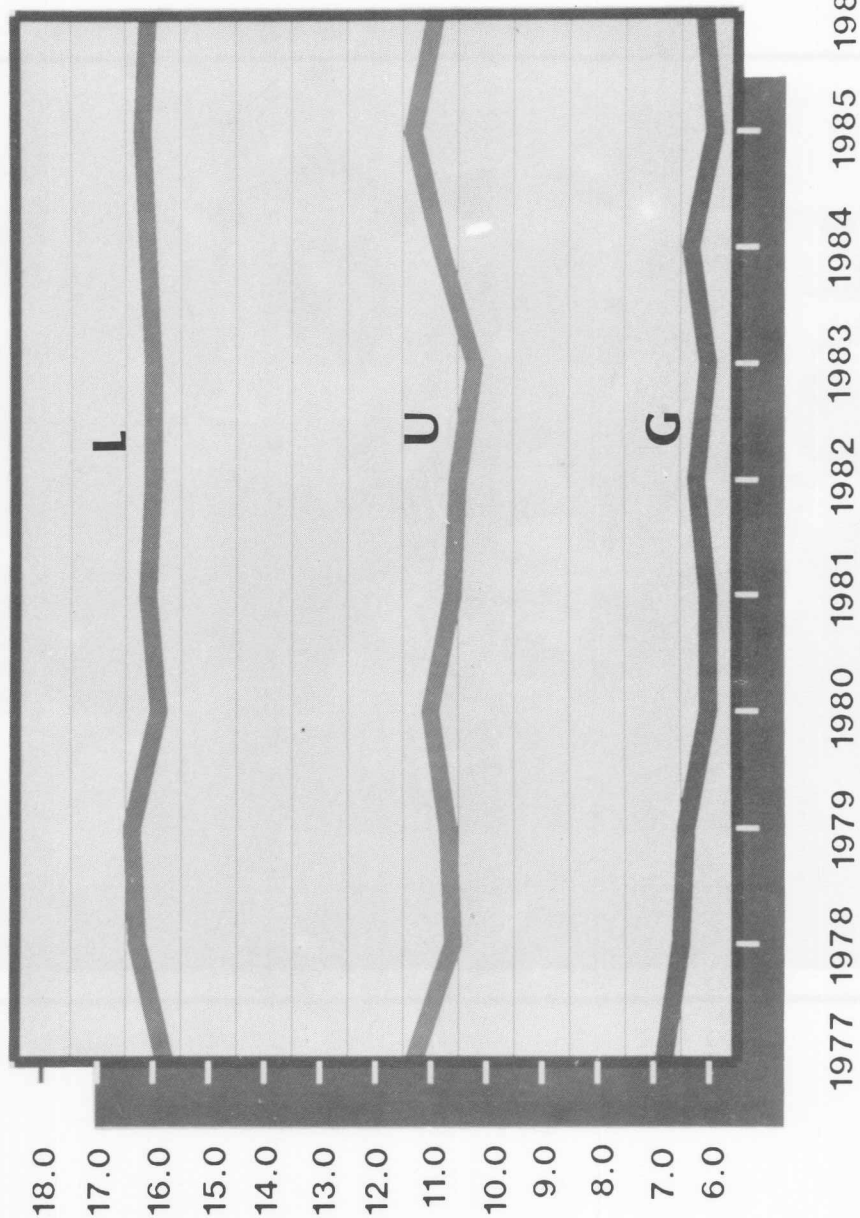
*FY 1987 figures are as of Budget Amendment Number Five, December 4, 1986.

SOURCE: Division of Budget and Research Services/Inman

Quarter Credit Hour Information



AVERAGE QUARTER CREDIT HOURS PER STUDENT ENROLLED BY LEVEL



West Georgia College
Fall Quarters 1977-1986

SOURCE: University System of Georgia Quarterly Enrollment Report

West Georgia College

DETAILED ENROLLMENT AND QCH HISTORY

FY 1981 - FY 1987

	Lower Level			Upper Level			Graduate Level			Total	
	Enrollment	Q.C.H.	Avg. Q.C.H.	Enrollment	Q.C.H.	Avg. Q.C.H.	Enrollment	Q.C.H.	Avg. Q.C.H.	Q.C.H.	
FY 81											
Summer 1980	544	9,662	17.8	746	6,413	8.6	1,301	10,811	8.3	26,886	
Fall 1980	2,801	45,694	16.3	1,258	13,874	11.0	1,143	6,901	6.0	66,469	
Winter 1981	2,433	40,700	16.7	1,308	14,766	11.3	1,119	6,817	6.1	62,283	
Spring 1981	2,119	36,286	17.1	1,402	15,351	10.9	1,308	8,236	6.3	59,873	
		132,342			50,404			32,765		215,511	
FY 82											
Summer 1981	559	9,428	16.9	757	6,277	8.3	1,178	9,712	8.2	25,417	
Fall 1981	3,186	52,619	16.5	1,344	14,294	10.6	1,054	6,352	6.0	73,265	
Winter 1982	2,825	47,570	16.8	1,411	15,264	10.8	1,068	6,642	6.2	69,476	
Spring 1982	2,481	41,442	16.7	1,457	16,306	11.2	1,200	7,317	6.1	65,065	
		151,059			52,141			30,023		233,223	
FY 83											
Summer 1982	590	10,147	17.2	746	6,543	8.8	1,082	9,233	8.5	25,923	
Fall 1982	3,612	58,767	16.3	1,397	14,687	10.5	968	6,028	6.2	79,482	
Winter 1983	3,239	52,864	16.3	1,510	16,061	10.6	1,037	6,345	6.1	75,270	
Spring 1983	2,786	46,827	16.8	1,583	15,960	10.1	1,228	7,494	6.1	70,281	
		168,605			53,251			29,100		250,956	
FY 84											
Summer 1983	675	10,767	16.0	842	6,686	7.9	996	8,104	8.1	25,557	
Fall 1983	3,752	60,146	16.0	1,488	15,228	10.2	1,111	6,711	6.0	82,085	
Winter 1984	3,312	54,120	16.3	1,586	16,713	10.5	1,127	6,900	6.1	77,733	
Spring 1984	2,768	45,437	16.4	1,653	17,746	10.7	1,236	7,912	6.4	71,095	
		170,470			56,373			29,627		256,470	
FY 85											
Summer 1984	678	10,079	14.9	840	6,902	8.2	1,114	9,317	8.4	26,298	
Fall 1984	3,503	56,325	16.1	1,555	16,761	10.8	1,192	7,469	6.3	80,555	
Winter 1985	2,931	50,010	17.1	1,745	17,936	10.3	1,161	7,157	6.2	75,103	
Spring 1985	2,547	43,620	17.1	1,817	19,008	10.5	1,279	8,121	6.4	70,749	
		160,034			60,607			32,064		252,705	
FY 86											
Summer 1985	632	9,610	15.2	901	9,160	10.2	1,186	9,581	8.1	28,351	
Fall 1985	3,069	49,733	16.2	1,731	19,523	11.3	1,180	7,015	5.9	76,271	
Winter 1986	2,722	45,753	16.8	1,823	20,789	11.4	1,243	7,542	6.1	74,084	
Spring 1986	2,254	39,270	17.4	1,867	20,122	10.8	1,332	8,271	6.2	67,663	
		144,366			69,594			32,409		246,369	
FY 87											
Summer 1986	668	9,499	14.2	960	9,226	9.6	1,285	10,637	8.3	29,362	
Fall 1986	3,163	51,191	16.2	1,774	19,452	11.0	1,204	7,364	6.1	78,007	

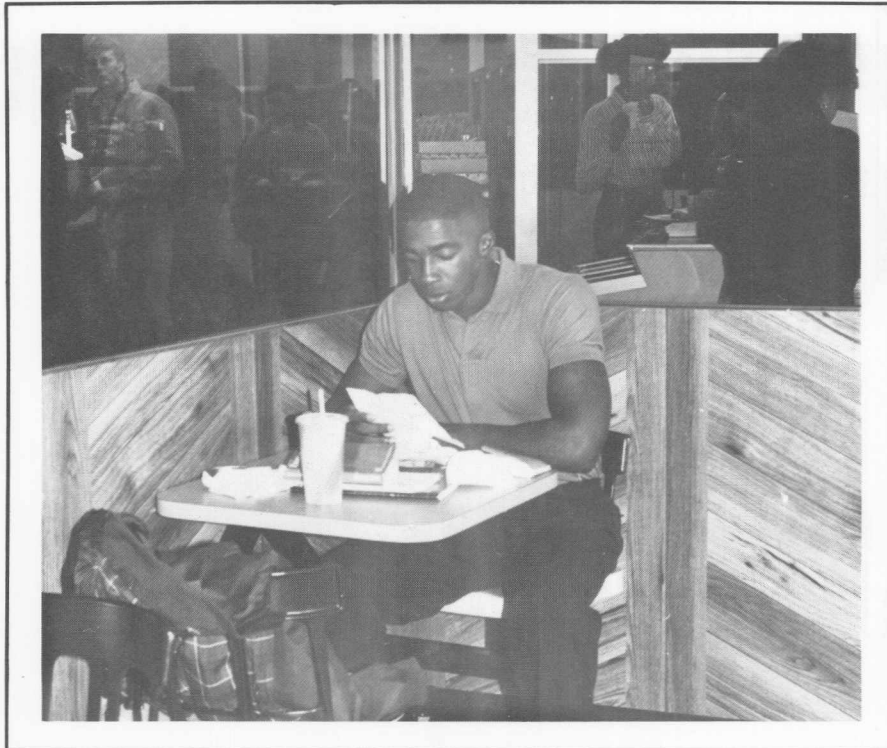
SOURCE: University System of Georgia Quarterly Enrollment Report

WGC HEADCOUNT RELATIVE TO EFT AND QCH HISTORY FALL 1972 - FALL 1986

Fall	Headcount	EFT*	Total QCH
1972	5,735	5,196	77,936
1973	5,201	4,566	68,487
1974	5,524	4,435	66,521
1975	5,803	4,639	69,582
1976	5,366	4,374	65,614
1977	5,536	4,477	67,155
1978	5,119	4,172	62,579
1979	5,051	4,229	63,441
1980	5,271	4,431	66,469
1981	5,660	4,884	73,265
1982	6,050	5,299	79,482
1983	6,351	5,472	82,085
1984	6,250	5,370	80,555
1985	5,980	5,085	76,271
1986	6,141	5,200	78,007

*15 QCH = full time

SOURCE: University System of Georgia Quarterly Enrollment Report



Research



West Georgia College

DISTRIBUTION OF GRANTS AND CONTRACTS AWARDED

Fiscal Year 1986

	# Proposals Awarded	Amount Awarded
School of Arts and Sciences		
Research	6	\$ 56,691
Instruction	3	36,850
School of Education		
Instruction	5	21,332
Institutional		
Placement/Cooperative Education	2	22,284
Public Service	1	138,654
COLLEGE TOTALS	17	\$275,811

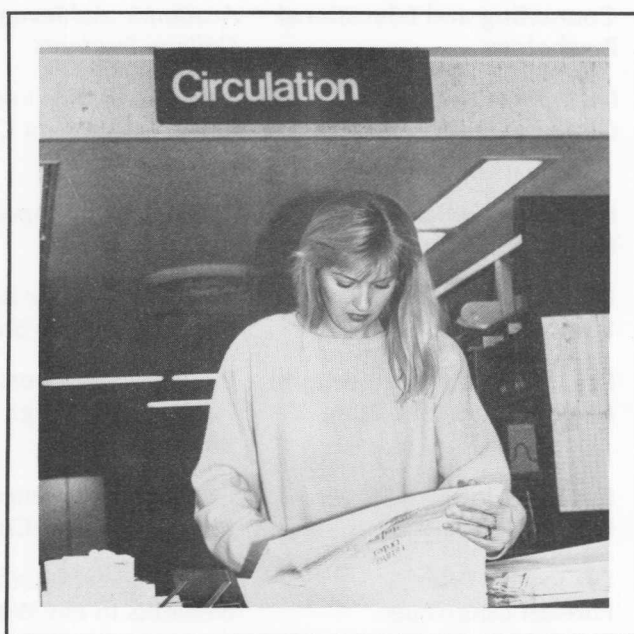
SOURCE: President's Annual Report, 1985-86.

West Georgia College
FACULTY RESEARCH GRANTS
 Fiscal Year 1987

Grant #	Amount	Name/Department	Grant Title
8701	\$ 700	WGC Review	<i>Publication Costs</i>
8702	90	Drs. Baker and Arsan Accounting Department	<i>The Information Content of Foreign Currency Translation Adjustments: An Empirical Test</i>
8703	835	Dr. John Martin History Department	<i>Dixon Hall Lewis: A Political Biography</i>
8704	82	Dr. Verl Short Early Childhood	<i>An Examination of the Profile of Georgia Elementary School Principals (K-6)</i>
8705	375	Dr. James Carr Management/Marketing	<i>Cost Effective Strategies for Reducing Back Injuries</i>
8706	70	Mr. Charles Aust Mass Communication/ Theater Arts	<i>Use of Relationship-enhancing Communication Skills on the "Cosby Show"</i>
8707	1,657	Dr. Karl Steinen Sociology/Anthropology	<i>Ochlockonee River Weeden Island Project: III</i>
8708	100	Dr. Edward Gilbert Biology Department	<i>Time and Motion Studies of Triolium II Image Analysis</i>
8709	1,500	Dr. Benjamin Kennedy History Department	<i>France and Spain in the War of the Pyrnees, 1793-1795</i>
8710	400	Dr. Jonathan Goldstein History Department	<i>Re-examining Edward Sylvester Morse as Expert and Western Observer in Meiji Japan</i>
8711	500	Dr. George Rolle Counseling and Educational Psychology	<i>The Effects of Personality Variables and Academic Achievement on Retention of Black College Students</i>
8712	1,700	Dr. Johnny Waters Geology Department	<i>A Reclassification of Genra Belonging to the Order Spiraculata Class Blastoidea (Echinodermata)</i>
8713	2,000	Dr. Curtis Hollabaugh Geology Department	<i>The Origin of Vapor Phase Minerals in Rhyoiite Lavas</i>
8714	387	Dr. Carole Scott Economics Department	<i>The Pre-civil War Banking and Credit System in Two Southern States</i>
8715	150	Drs. McNinch and Steelmon Middle Grades/Reading	<i>Evaluating Teachers' Performance in Teaching Reading: What is Perceived as Important?</i>
8716	165	Dr. Emily Johnson Early Childhood	<i>Cost and Preference as Factor Gender Identification in Children's Valentines</i>
8717	620	Dr. Joseph Tyler Foreign Languages	<i>Borges and the Other: Medieval Germanic Elements in His Works</i>

Grant #	Amount	Name/Department	Grant Title
8718	1,350	Dr. Dwight Romanovicz Biology Department	<i>Scaled Algae in Georgia</i>
8719	1,000	Dr. Timothy Chowns Geology Department	<i>Structural Geology of the Coosa Coalfield Area, Alabama</i>
8720	950	Dr. William Schaniel Economics Department	<i>An Exploration of the Peabody Museum for for Whaling Journals and Logs Relating to the Economic History of New Zealand (1818-1840)</i>
8721	626	Drs. Simons and Jan Sociology/Anthropology	<i>An Evaluation of the Semi-Independent Living Arrangements Program</i>
8722	1,058	Dr. Lee-jan Jan Sociology/Anthropology	<i>A Comparison of Juvenile Delinquency Prevention Programs in Taiwan and the United States</i>
8723	810	Dr. Leticia Ekhaml Media Department	<i>A Study of the Production Time and Skills of School Library Media Specialists</i>
8724	1,615	Dr. Pierrette Frickey Foreign Languages	<i>Women Writers from the Caribbean</i>
8725	100	Dr. Lucille Garmon Chemistry Department	<i>Redistribution of Metal Atoms in Copper-nickel and Copper-aluminum Alloys in Response to Impact Stress</i>
8726	850	Dr. Siegfried Karsten Economics Department	<i>China's Social Market Economy</i>
8799	10	To Be Allocated	
<hr/> \$19,700			

SOURCE: Chairman, Learning Resources Committee



WEST GEORGIA COLLEGE
ALUMNI ASSOCIATION

Alumni Association



WEST GEORGIA COLLEGE ALUMNI ASSOCIATION

The West Georgia College alumni are the largest single constituency related to the institution. The experience and the ability to each alumnus represent a valuable resource for service to the College. Services and programs of the Alumni Association form an integral part of the College's institutional advancement activities.

Membership in the West Georgia College Alumni Association is automatically conferred upon all graduates of West Georgia College, Bowdon College, or the 4th District A & M School and to all former students of these institutions who have attended at least three quarters. All other former students of these institutions are eligible for membership upon request. The telephone number of the Alumni Office is (404) 836-6582.

Through activities of the Association, alumni are informed of institutional plans, progress, opportunities, and needs. *Perspective*, the alumni newspaper, is sent to alumni and friends on a quarterly basis.

Major activities include Homecoming, Alumni Day, and the Annual Meeting of the Fourth District A & M Alumni Association. Alumni Clubs and class reunions involve hundreds of individuals each year.

OFFICERS

W.H. Smith ('63), *President*

Steve Sampler ('75), *President-Elect*

Greg Shadrix ('78), *Vice President*

Elaine Carnes Connally ('60), *Secretary*

Phyllis L. Fountain ('60-'69), *Director, Development and Alumni Services*

Phyllis Muse Bickers ('74-'76), *Coordinator of Alumni Services*

WEST GEORGIA COLLEGE FOUNDATION

The West Georgia College Foundation, Inc., is a non-profit organization founded and operated for the benefit of West Georgia College. Its functions include receiving and administering private funds and providing other services for the advancement of the College. The policies of the foundation are established by a Board of Trustees, composed of outstanding business and professional leaders, and by officers elected by the trustees.

The unrestricted gifts received by the foundation are being used currently to:

1. Underwrite an extensive program of student aid.
2. Provide equipment and services which cannot be funded by state appropriations, but which are necessary for institutional advancement.
3. Benefit the College in other ways subject to the approval of the Foundation's Board of Trustees.

The Foundation encourages unrestricted contributions which can be used in a manner deemed most beneficial to the College. Gifts, received for specific purposes that are approved by the College, are used where designated by the donor.

OFFICERS

A.R. McGukin, *Chairman*

Lamar Plunkett, *Vice-Chairman*

A.J. André, *Immediate Past President*

*Phyllis Lewis Fountain, *Executive Director and Treasurer*

*Tracy Stallings, *Secretary*

BOARD OF TRUSTEES

A.J. André

*John L. Ball

Michael S. Barron

*J. Eugene Beckham, Jr.

Dr. James E. Boyd

John W. Boyd

*J. Dean Brown

*Dr. L. Wayne Brown

*Representative William F. Cummings

Guy Darnell, Jr.

*Ovid R. Davis

Ray Fulford

*Dr. Alton V. Hallum

Dr. Claudette Hayes

*E.H. Hearn, Jr.

*Harold O. Higgins

Ted Hirsch

John S. Hubbard

Fred Hutchins

*Mrs. Opal Ward Jones

Hardy McCalman

*A.R. McGukin

J.R. Newell

Dr. Ward Pafford

Stanley Parkman

David Perry

Lamar Plunkett

L. Richard Plunkett

*Dr. James C. Pope

Edgar L. Rhodes

Alice Richards

Chester A. Roush, Jr.

Robert J. Stone

David H. Tisinger

Dr. Maurice K. Townsend

John T. Wasdin

W.W. Williams, Jr.

Dr. J. Carter Wright

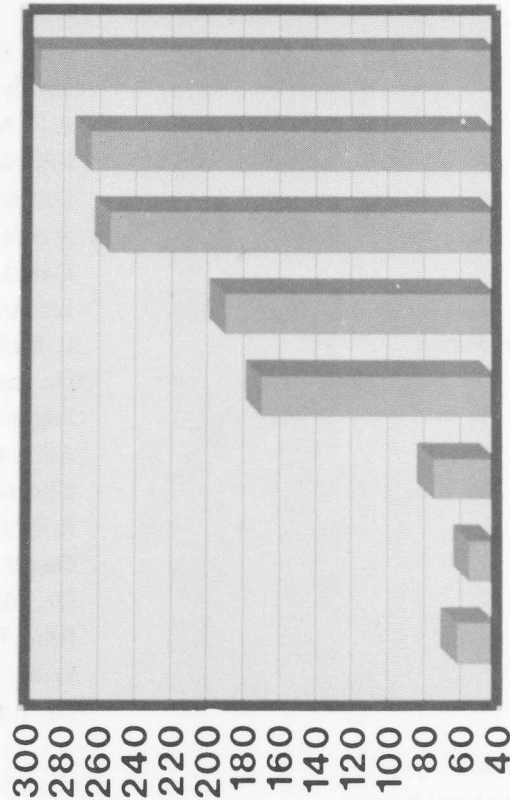
*Indicates West Georgia College Alumni

SOURCE: Office of Development and Alumni Services

Annual Fund Drive Results

Fiscal Years 1978 / 79 to 1985 / 86

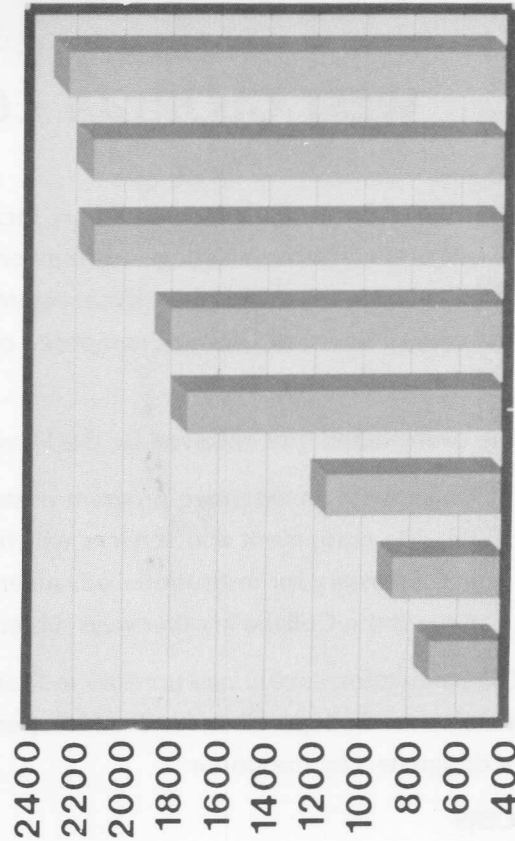
West Georgia College



78 / 79 / 80 / 81 / 82 / 83 / 84 / 85 /
79 80 81 82 83 84 85 86

Annual Fund Dollars Raised
(x 1000)

Number of Donors



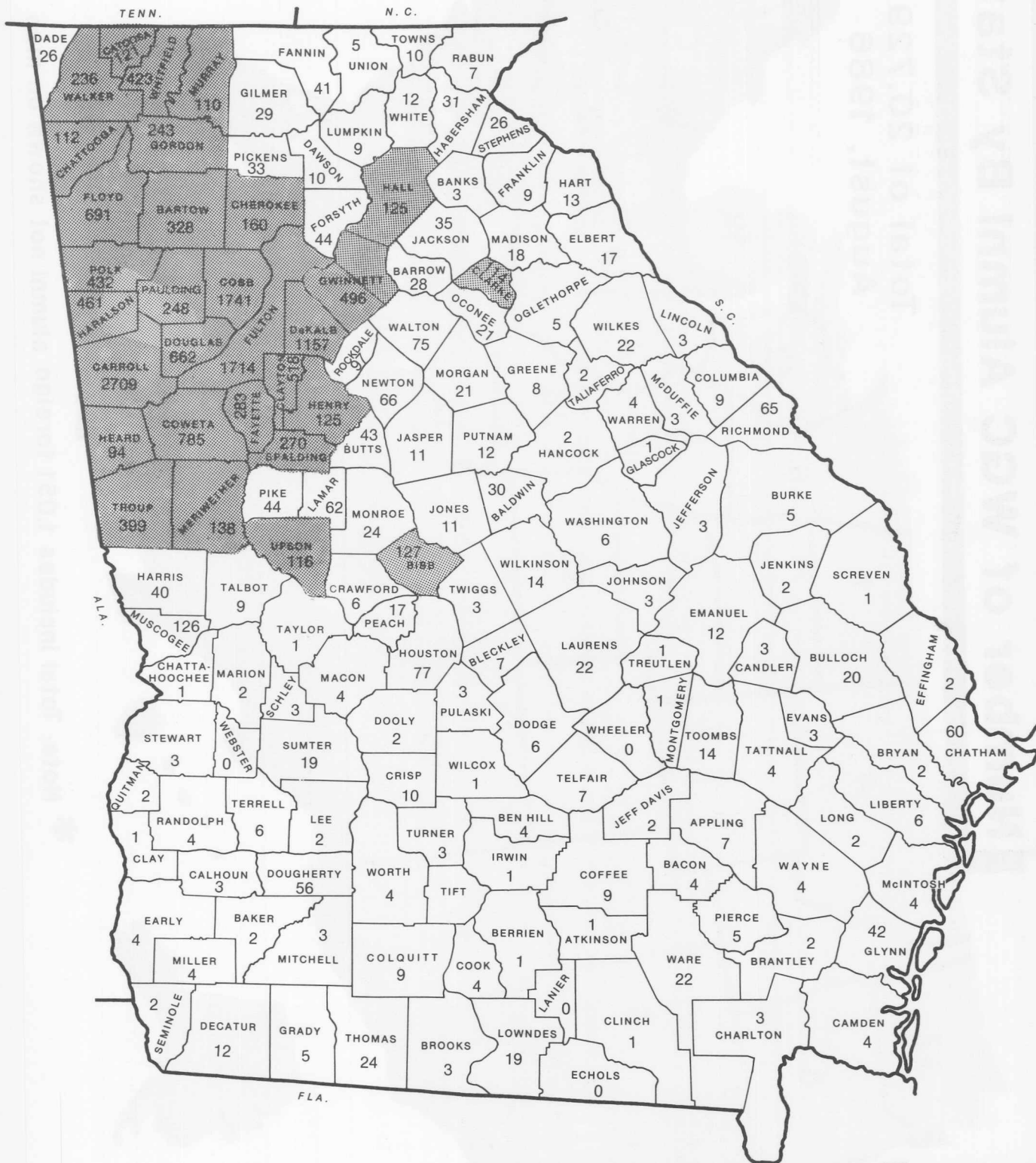
78 / 79 / 80 / 81 / 82 / 83 / 84 / 85
79 80 81 82 83 84 85 86

SOURCE: Office of Development and Alumni Services

NUMBER OF WGC ALUMNI

AUGUST 1986

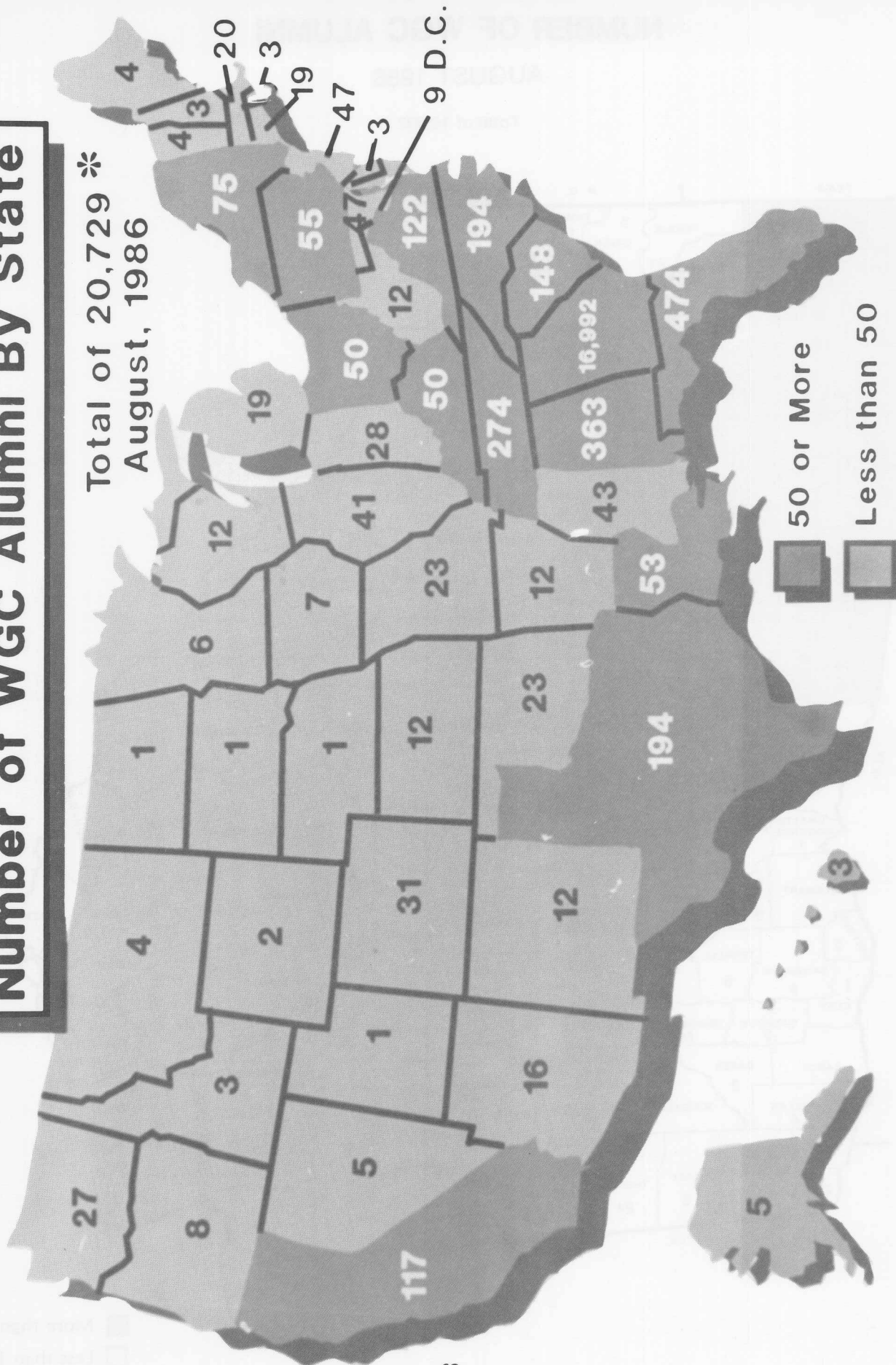
Total of 16,992



☒ More than 100
☐ Less than 100

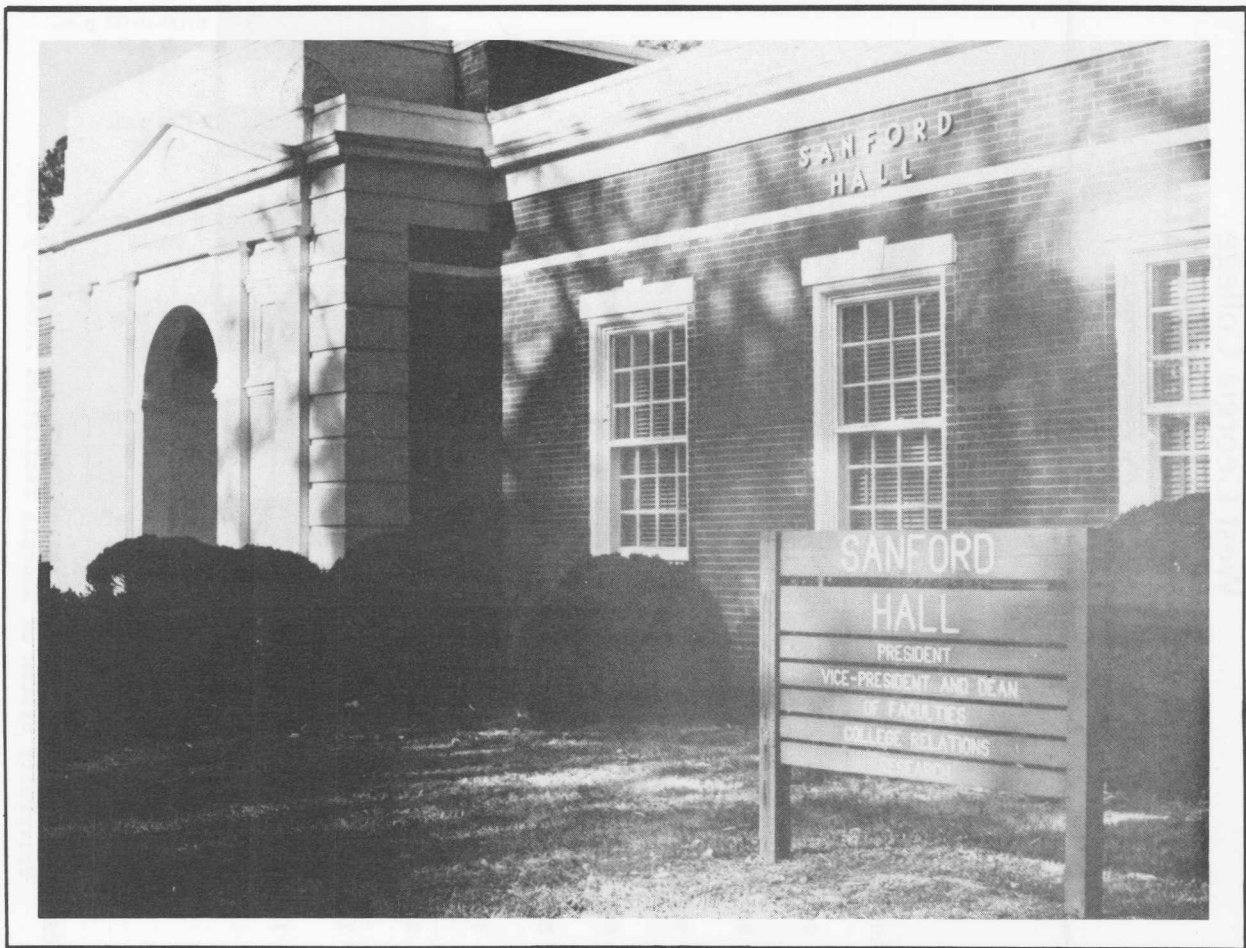
Number of WGC Alumni By State

Total of 20,729 *
August, 1986

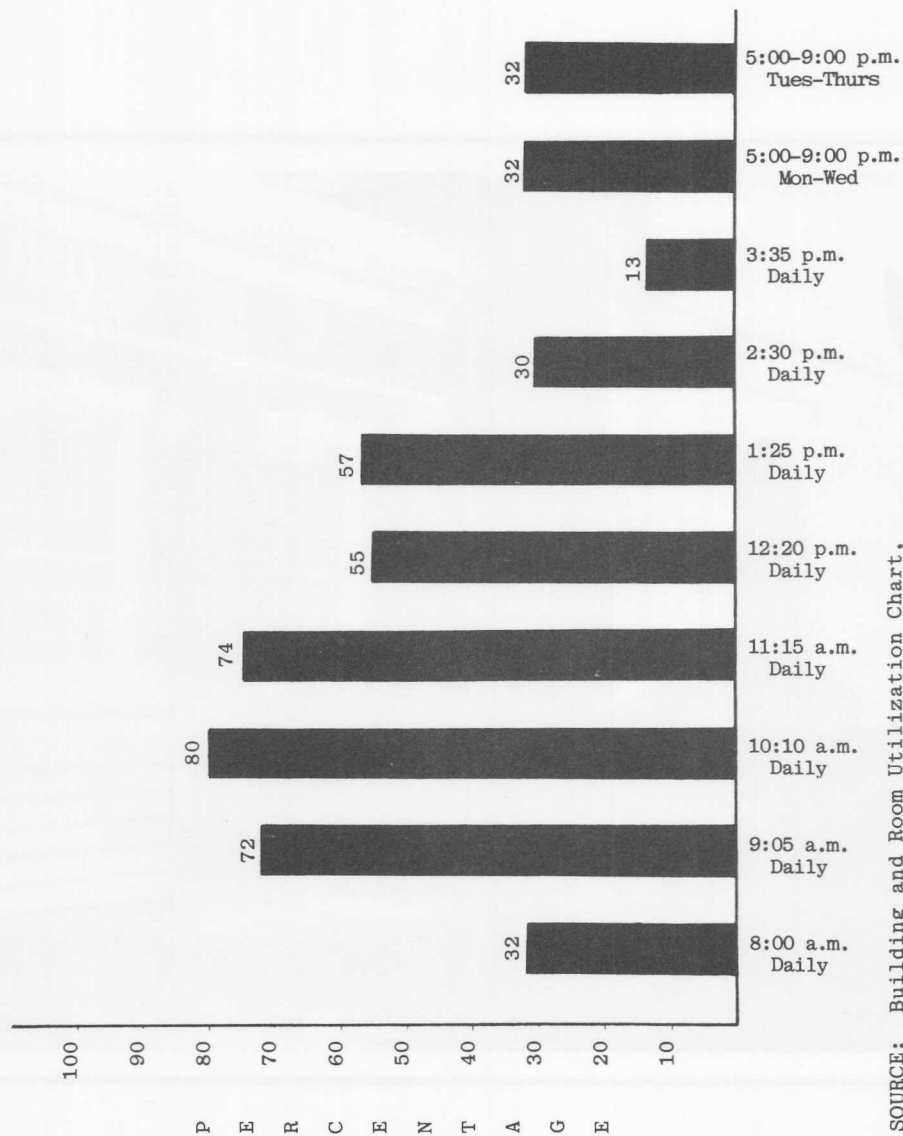


* Note: Total includes 1,051 foreign alumni not shown on map.

Physical Plant



West Georgia College
CLASSROOM UTILIZATION
 Fall Quarter 1986

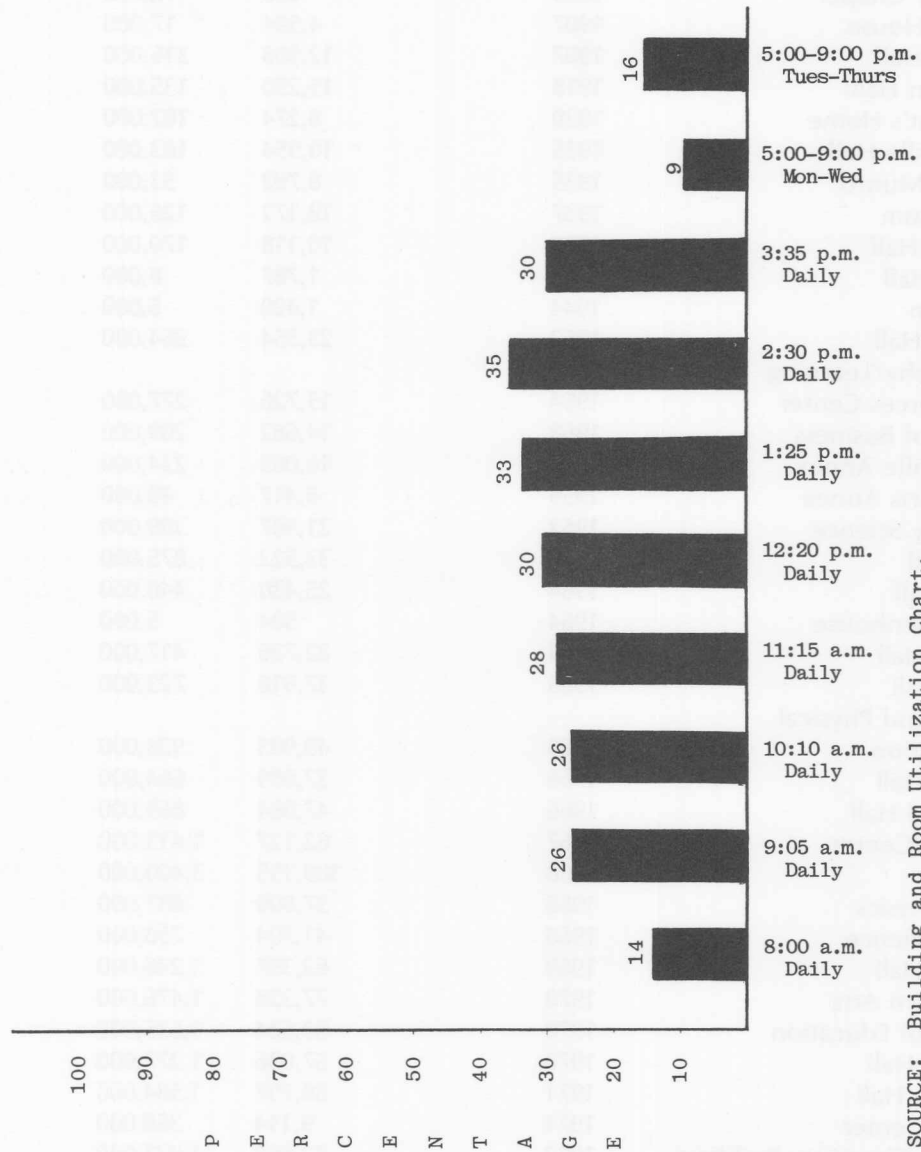


SOURCE: Building and Room Utilization Chart,
 University System of Georgia Facilities Inventory Edit

West Georgia College

LABORATORY UTILIZATION

Fall Quarter 1986



SOURCE: Building and Room Utilization Chart,
University System of Georgia Facilities Inventory Edit

West Georgia College CAMPUS FACILITIES

as of June 30, 1986

Facility	Date of Construction or Acquisition	Approximate Square Footage	Replacement Cost or	
			Investment*	Approx. Present Value**
Bonner House	1843	2,246	\$ 8,000	\$ 164,000
Kennedy Chapel	1893	880	5,000	64,000
Alumni House	1907	4,504	17,000	329,000
Melson Hall	1907	12,988	316,000	948,000
Adamson Hall	1918	15,290	135,000	1,116,000
President's Home	1930	8,274	102,000	604,000
Mandeville Hall	1935	10,954	103,000	800,000
Martha Munro	1935	8,792	53,000	642,000
Auditorium	1937	18,172	126,000	1,392,000
Sanford Hall	1938	10,118	170,000	739,000
Hamm Hall	1944	1,787	8,000	130,000
Old Barn	1944	1,420	5,000	104,000
Aycock Hall	1952	23,554	264,000	1,719,000
Geography/Learning Resources Center	1954	15,726	277,000	1,148,000
School of Business	1958	14,682	209,000	1,072,000
Mandeville Annex	1959	16,003	224,000	1,168,000
Visual Arts Annex	1959	8,417	40,000	614,000
Callaway Science	1962	21,407	309,000	1,563,000
Row Hall	1963	33,522	875,000	2,447,000
Cobb Hall	1964	25,430	440,000	1,856,000
Old Greenhouse	1964	504	5,000	37,000
Stozier Hall	1964	22,726	417,000	1,659,000
Gunn Hall	1965	37,916	723,000	2,768,000
Health and Physical Education	1965	49,903	928,000	3,623,000
Boykin Hall	1966	37,889	664,000	2,766,000
Pritchard Hall	1966	47,084	869,000	3,437,000
Student Center	1967	62,127	1,415,000	4,535,000
Library	1968	109,155	3,400,000	7,968,000
Math-Physics	1968	37,800	687,000	2,759,000
Social Science	1968	41,704	758,000	3,044,000
Downs Hall	1969	62,397	1,246,000	4,555,000
Classroom Arts	1970	77,328	1,476,000	5,645,000
School of Education	1970	63,684	1,635,000	4,649,000
Watson Hall	1970	57,036	1,277,000	4,164,000
Bowdon Hall	1971	58,797	1,584,000	4,292,000
Health Center	1971	9,114	368,000	665,000
Biology-Chemistry Building	1972	72,860	1,971,000	5,319,000
Roberts Hall	1972	82,345	2,044,000	6,011,000
Shop Building	1972	11,088	140,000	777,000
Stozier Annex	1972	26,801	704,000	1,956,000
Vehicle Repair Building	1972	3,900	40,000	285,000
Warehouse	1972	7,608	98,000	555,000

CAMPUS FACILITIES *Continued*

Facility	Date of Construction or Acquisition	Approximate Square Footage	Investment*	Replacement Cost or
				Approx. Present Value**
Tyus Hall	1973	51,119	\$ 1,324,000	\$ 3,732,000
Food Service Building	1974	48,160	1,467,000	3,516,000
Locksmith-Electronics	1974	987	2,000	72,000
Greenhouse Grounds Shop	1976	600	1,000	44,000
Grounds Maintenance Building	1977	1,800	16,000	131,000
Heavy Equipment Shop	1977	720	2,000	53,000
Lawn Mower Repair Shop	1977	960	3,000	70,000
Foundry	1979	400	1,000	29,000
Observatory	1979	484	16,000	35,000
Field House	1980	6,403	65,000	467,000
Track Building	1980	800	5,000	58,000
Storage Warehouse	1980	5,822	27,000	425,000
Baseball Press Box	1981	779	8,000	57,000
Pavilion	1981	9,000	49,000	657,000
Custodial Building	1981	1,800	22,000	131,000
HPE/Office Annex	1983	2,048	31,000	149,000
Athletic Storage-Football	1984	600	6,000	6,000
School of Business Annex	1985	18,404	1,460,000	1,460,000
Central Duplication/ Computer Center	1985	7,585	150,000	150,000
Rifle Range Building	1986	480	4,000	4,000
TOTAL		1,392,883	\$30,794,000	\$101,334,000

*Rounded to the nearest \$1,000.

**Replacement costs as determined by the Board of Regents and shown on the Facilities Inventory Report.

SOURCE: Property Control Officer

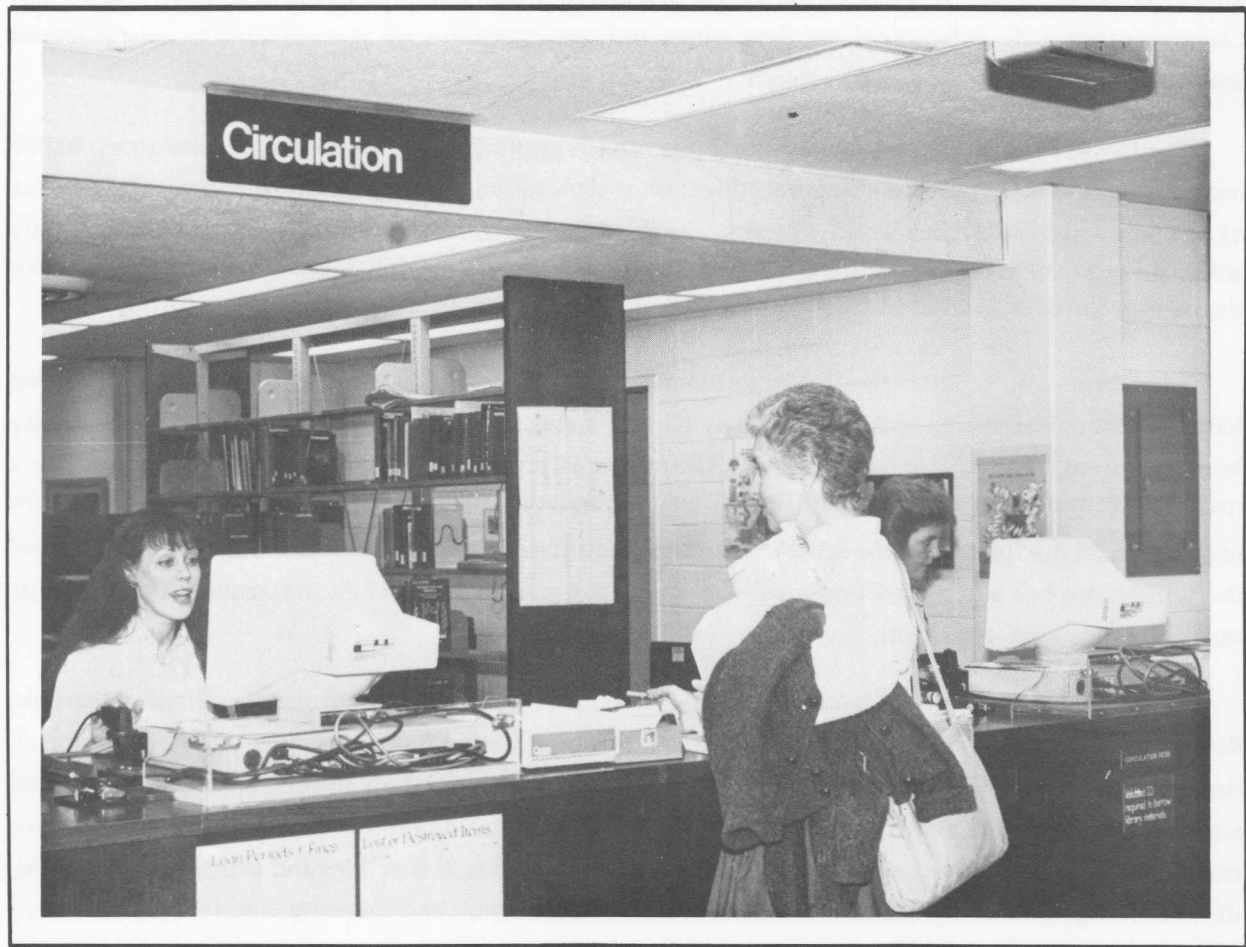
West Georgia College LAND HOLDINGS

Property	Acres	Year	Cost
B.A. Sharpe	275.000	1907	\$ 9,625.00
Driver	0.319	1965	5,500.00
J. Perkins	0.976	1965	4,500.00
Pope	3.850	1965	5,500.00
O.R. Perkins	1.790	1965	4,700.00
Cash	1.083	1965	7,000.00
Herb	0.483	1966	4,000.00
Cole	25.010	1966	20,758.30
Roop	4.410	1966	60,000.00
Hughes	1.860	1967	8,212.50
Pruitt	0.226	1967	10,000.00
Harper	0.164	1968	5,000.00
Staples	17.640	1968	44,100.00
Cole	65.650	1973	128,017.50
Sold to City of Carrollton	(15.000)	1980	(29,250.00)
The Place, Inc.	10.745	1984	189,000.00
Sold to WGC Foundation	(.326)	1984	(5,000.00)
	393.880		\$471,663.30
Current value of land	\$5,184,000		

SOURCE: Campus Development

WEST GEORGIA COLLEGE IRVING SULLIVAN INGRAM LIBRARY

Library



WEST GEORGIA COLLEGE IRVINE SULLIVAN INGRAM LIBRARY

The Library is one of the most important centers on any campus and West Georgia College's Irvine Sullivan Ingram Library is one of the most modern library facilities in the state of Georgia. The first phase of this four story structure was built in 1968 and the addition was completed in 1980 to provide over 85,000 square feet of usable research/storage areas and over 1,000 seating spaces for students and faculty.

The library presently contains seminar and conference rooms, lockable faculty carrels, hundreds of individual study carrels, a room for microform reading, the Annie Belle Weaver Special Collections Room, large areas for reference, periodical materials, maps and the circulating book collection. Computer terminals, video receivers, typewriters and copy machines are also available to assist students and faculty with their study and research.

The Irvine Sullivan Ingram Library presently houses approximately 260,000 bound volumes, 18,000 reels of microfilms, a limited audiovisual collection and more than 731,000 pieces of microform as well as 13,800 maps and charts and 17,171 volumes/pieces of special collection material. The Library currently subscribes to over 1,493 magazines and newspapers and is also the Sixth Congressional District selective depository for over 135,000 United States government publications.

The Library's automated circulation system is fully operable and faculty and graduate students also have automated access to materials in other United States libraries via SOLINET's on-line interlibrary lending system and may also apply for a Joint Borrower's Card which can be utilized to check out library materials from any of the other thirty-three University System of Georgia institutions' libraries. Literature searches in all disciplines are available through the automated Dialog Information Retrieval Service and the library also has automated book order and cataloging services to insure maximum efficiency of its material processing operation.

The Learning Resources Center (LRC), located on the ground floor of the Geography/Learning Resources Building with an extension in the Education Center, assists faculty members from all departments in improving instruction through the use of audio-visual equipment and materials. A well trained staff is available to provide professional services and consultation in developing more effective means of instruction. Services include production of color slides, B & W film and prints, charts, graphs, dry mounting, laminating, transparencies, audio tape production and dubbing, and film procurement from various film libraries. Equipment includes cassette recorders, record players, overhead, opaque slide, filmstrip and motion picture projectors. The LRC is equipped with a modern television facility located in the Education Center to provide the faculty with up-to-date color video taping capabilities. WWGC, the College's educational FM radio station, is maintained by students and operated under the supervision of the LRC.

SOURCE: WGC Undergraduate Catalog 1986-87, Irvine Sullivan Ingram Library.

The staff of the Library and the Learning Resources Center are comprised of thirty full-time employees. Approximately 50% of the staff members of the Ingram Library are professional librarians holding faculty rank with appropriate graduate degrees in Library Science from accredited library schools.

A compilation of the Library's Acquisition and Services statistics for the past five years is provided in the table below.

West Georgia College LIBRARY ACQUISITIONS FY 1982 - FY 1986

HOLDINGS	FY 1982	FY 1983	FY 1984	FY 1985	FY 1986
Volumes added during year	8,813	6,030	7,438	5,507	6,689
Volumes held at end of year	235,189	241,219	248,657	254,164	260,853
Reels of microfilm held at end of year	16,424	16,709	16,957	17,286	18,066
Physical units of other forms of microtext held at end of year	668,048	671,773	675,834	697,576	713,685
Periodical titles being received at end of year	1,355	1,418	1,431	1,459	1,493
ITEMS					
U.S. Documents	*130,699	134,093	135,808	135,847	135,564
**U.S. Documents (Volumes on Microfiche)	3,125	19,297	24,783	28,716	32,053
Annual Reports	505	452	505	540	492
CIRCULATION INFORMATION	127,055	178,074	194,953	257,127	249,184
INTERLIBRARY LOANS					
Borrowed	1,150	1,892	1,712	1,745	1,636
Loaned	1,765	1,944	1,910	1,824	1,720
REFERENCE QUESTIONS					
Information	12,661	19,204	17,751	17,824	16,835
General	7,349	7,249	7,951	9,517	11,128

*Materials currently included in *Physical units of other forms of microtext held at end of year* were previously counted with U.S. Documents.

**Depository publications on microfiche received from Government Printing Office.

SOURCE: Irvine Sullivan Ingram Library.

WEST GEORGIA COLLEGE COMPUTER CENTER

Computer Systems primarily used at the Computer Center include two (2) locally operated and maintained CDC OMEGA 480 processors, the IBM Series/1 model F minicomputer, a TI 990-20 minicomputer, and the University System of Georgia Computer Network's (USCN) CDC CYBER 170/730. Other hardware facilities available are described below.

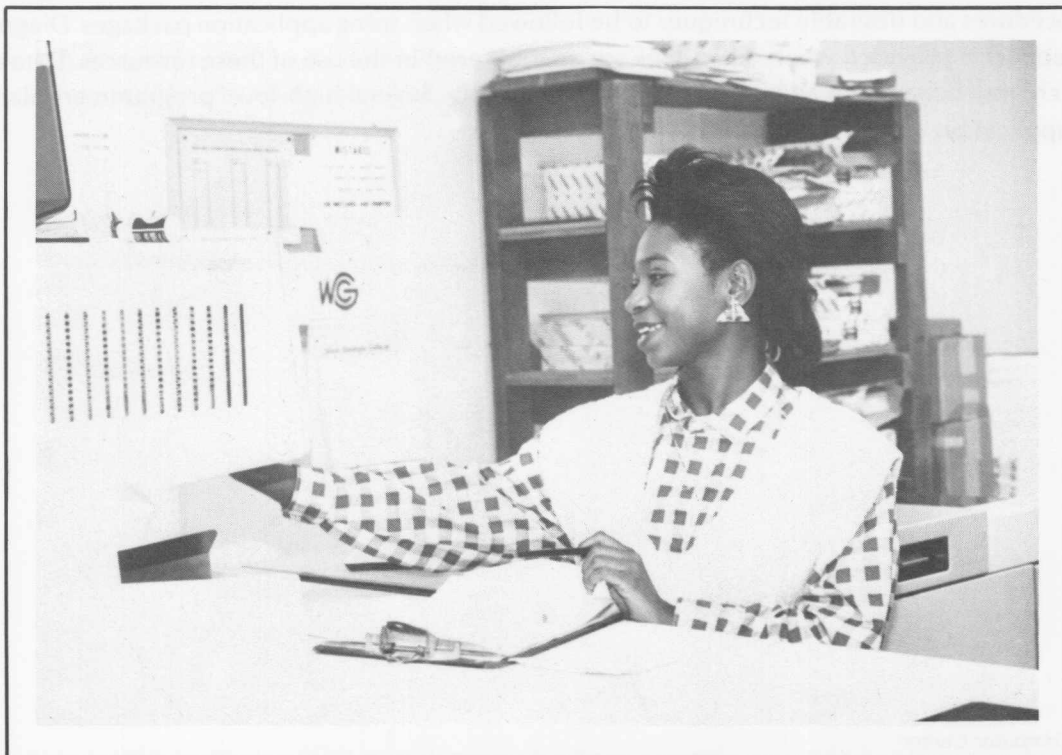
HARDWARE FACILITIES

Description	Quantity	
HALCYON 4200 - (1) sends and receives messages to the USCN CYBER processor; (5) support the local area network (LAN) on campus.	6	
CMC-4 DPF Units - control the flow of information between the OMEGA CPUs and remote terminals.	2	
DEVELCON Smart Switch with 256 async ports and 38 sync ports	1	
INTERACTIVE TERMINALS		
Print-Keyboard		
Decwriter-three have APL features	11	
Texas Instruments	6	
CRT Stations		
Televideo 950	40	
IBM 3101	16	
Async to sync (3780) protocol converter	2	
MICRO's		
Apple II Plus/Apple IIe/Apple IIc	These support three campus microlabs as well as individual departments.	70
MacIntosh		6
Tandy M-12/TRS80		2
IBM PC & Equivalent		116
IBM Displaywriter System		1
IBM Compatibles		6

SOURCE: Computer Center

MAINFRAME AND MINICOMPUTERS SYSTEM SOFTWARE FACILITIES

Title	Description
SAS	Statistical Package
SPSS	Statistical Package
Easytrieve	Information Retrieval and Data Management Package
TOTAL	Data Base Management Package
MANTIS	Online application development system
LMS-II	Text Editor and File Management Package
ENVIRON/1	Communications monitor for the CDC Omega processors
ENTIRE	Front-end security and utilities package for ENVIRON/1
CA-SORT	A general sort package
SIDES	A key-to-disk data entry and job submission package for the IBM Series-1
OS/VS-1	Operating system for the CDC Omega processor
RPS	Operating system for the IBM Series-1
DNOS	Operating system for the TI 990
ASSIST	Assembly language interpreter
WATFIV	University of Waterloo FORTRAN version 5 interpreter
COBOL	IBM COBOL U compiler
PC1 DPT	IBM PC1 optimizing compiler



The available computer resources are used for administrative work of the college, for faculty, student, and institutional research, and extensively for instructional purposes. The demand for data processing resources has grown steadily, both in quantity and quality of resources and in the number of users. The following table demonstrates the OMEGA utilization.

OMEGA BATCH UTILIZATION

User	Percent of Total CPU Time Used	Number of Jobs Run	Percent of Total Jobs Run
Administration	88.6	38,959	64.0
Instruction	7.2	18,989	31.2
Faculty and Institutional Research	2.0	1,503	2.5
System Maintenance and Miscellaneous	2.2	1,378	2.3
Totals			
Fiscal Year 1986		60,829	
Fiscal Year 1985		88,821	
Percent Increase/(Decrease)		(31.5)	

The Computer Center provides technical and liaison support between instructional research users and the available computational support resources. Faculty, staff, and students can receive guidance about procedures and desirable techniques to be followed when using application packages. Diagnostic analysis support is provided when difficulties are encountered in the use of these resources. Data entry for research, instruction, and administrative work is available. Several high-level programmers plan and develop application systems with the administrative users.

SOURCE: Computer Center

WEST GEORGIA COLLEGE STUDENT SERVICES

Student Services



WEST GEORGIA COLLEGE

STUDENT SERVICES

Admissions

Members of the Admissions Office staff travel the state talking with high school and junior college students about West Georgia College, show visitors about campus, sponsor visitation days, work with orientation, and process applications for admissions.

Financial Aid

The Financial Aid Office coordinates financial assistance, funded by the federal and state governments, the College, WGC Foundation, companies and individuals, to approximately one-third of West Georgia's students.

Health Services

The Student Health Center, which houses both an outpatient clinic and the infirmary, is under the supervision of a full-time physician. Nurses are on duty 24 hours a day. The Center is in operation from the day residence halls open through the last day of exams each quarter.

Intercollegiate Athletics

West Georgia College is extremely proud of its successful intercollegiate athletic programs. Women participate in basketball, cross country, softball, tennis, and volleyball and men in baseball, basketball, cross country, football, golf and tennis. All of the men's teams are affiliated with Division II of the National Collegiate Athletic Association (NCAA). Women's teams are members of the NCAA and the National Association of Intercollegiate Athletics (NAIA).

The women's basketball team was runner-up for the national championship in 1976 and won the state title in the 1981 and 1982 seasons. Volleyball teams have been equally successful, having won numerous state championships. West Georgia College men produced a national collegiate basketball championship team in 1974 and a national football championship team in 1982.

Athletic grants-in-aid are available in all sports. Excellent athletic facilities include a Health-Physical Education Complex, football field house, tennis courts, track, baseball diamond, indoor pool, weight room, and numerous practice and playing fields.

Intramural Program

Opportunities for recreation, social contacts and healthful exercise are provided by the College through an excellent intramural program for those not participating in intercollegiate athletics. Intramural competition includes football, softball, basketball, volleyball, tennis, track, bowling, swimming, aerobics, and numerous individual gaming and sporting events.

Placement & Cooperative Education

The Office of Placement and Cooperative Education provides a centralized placement service for all departments at West Georgia College. The Office serves both students and alumni who are seeking full-

time, part-time or summer employment by providing a job listing service whereby students and alumni may keep their resumes, recommendations and related materials on file to be sent to prospective employers upon request. Campus interviews are scheduled throughout the year with representatives from companies, government agencies and school systems. In addition to maintaining a library of current information on state and federal jobs, the job market in general, and various companies, the staff also conducts workshops on resume writing and interview techniques. This Office coordinates the Co-Op program for students desiring to work and go to college during alternating quarters. It also provides application forms and information about internships for students in business, public service agencies and governmental institutions.

Registrar's Office

The Registrar's staff conduct all registration and early registration activities. The Office publishes the quarterly bulletin of course offerings, provides the recording function for all grades received in course work and sends transcripts when requested by the student. An early registration system enables students to obtain confirmed schedules for the next quarter weeks before the quarter begins.

Residence Life

West Georgia living centers meet the physical needs of comfort, safety, and attractive surroundings and aid in the development of a disciplined mind, a social consciousness, and a large degree of responsibility for governing a group's affairs. To this end, the central Residence Life staff supervises the resident advisors, head residents, and resident managers who live in the halls. The central office staff process all housing applications and make hall and room assignments.

Student Activities

The Student Activities staff plan and direct the many phases of college life not directly related to the classroom. They coordinate offerings of the College Program Board, serve as advisors for Greek organizations, Student Government and other student groups, and organize Homecoming and many other activities.

Student Development Center

The Student Development Center offers a variety of services to all West Georgia College students. In addition to professional counselors being available to assist students in coping with personal problems, the Center conducts workshops on a regular basis to assist students in planning for their futures and in dealing with other concerns about college life. Counseling is available for individuals and for groups exploring career options, and a computerized career guidance program is available to help students determine career interests and preferences. The Center also provides a tutorial service and achievement programs for students with study or learning problems. Disabled students with special needs and problems can utilize services provided by the Center, and international students can obtain assistance and advice regarding housing, immigration matters, finances, personal adjustment and referrals to appropriate members of the College and the Carrollton community.

SOURCE: Student Services