



2016-2017 Fact Book

UNIVERSITY OF WEST GEORGIA



The University of West Georgia 2016-2017 Fact Book



Institutional Effectiveness and Assessment
1601 Maple Street
Carrollton, Georgia 30118-4530



University of West Georgia

2016 – 2017 Fact Book

Table of Contents

Preface	iii
---------------	-----

General Information

UWG President.....	2
UWG History	3
UWG Vision, Mission, and Values	4
Board of Regents.....	6
UWG Administration	10
Accreditations and Affiliations	17
Degrees and Majors Authorized.....	18

Historical Information

Total Enrollment by Course Level	22
Student Credit Hours by College and School.....	23
Degrees and Awards Conferred	30

Student Information

Composition of Student Body	36
Admissions	39
Geographic Origin by County	41
Geographic Origin by State or Territory.....	43
Geographic Origin by Country.....	44
Retention and Graduation Rates.....	46
Continuing Education	47



University of West Georgia

2016 – 2017 Fact Book

Table of Contents Continued

Student Information (continued)

Off Campus Instructional Site Profile	47
Extended Learning.....	48
Alumni by County.....	49
Alumni in the United States	50

Student Services

Irvine Sullivan Ingram Library.....	52
Housing and Residence Occupancy.....	53
Other Services	54

Employee Information

Faculty Profile.....	58
Faculty by College/School	61
Employee Average Salary.....	69

Financial Information

University Operating Expenses	72
University Revenue by Source.....	74
Distribution of the Student Dollar	75
Net Assets	76
Financial Aid	77
Research and Sponsored Projects	79
Fund Raising	82



University of West Georgia

Preface

The Department of Institutional Effectiveness and Assessment is pleased to present the 2016-2017 edition of the University of West Georgia *Fact Book*. It is our hope and intent that this volume continues the tradition of providing reliable statistical data and summary information designed to answer the most frequently asked questions about the university. Based on sound institutional research, the *Fact Book* serves as a good, first point-of-reference for institutional assessment, self-study, and planning. In total, it provides the institutional profile as of fall 2016 for our many publics.

In addition, individuals representing many different units provided data, information, and suggestions that contributed to the improvement of the *Fact Book*.

Institutional Effectiveness and Assessment

Phone: (678) 839-6449

Fax: (678) 839-4765

www.westga.edu/iea

Dr. Catherine A. Jenks, Associate Vice President and Custodian of Records

Mr. Reed Blalock, Director of Assessment

Ms. Elaine Harper, Senior Institutional Research Analyst

Ms. Tara Pearson, Senior Institutional Research Analyst

Ms. Annette Pritchett, Institutional Research Analyst-Intermediate

Ms. Erma Shooks, Senior Departmental Assistant

Ms. Amanda Thomas, Assessment Coordinator





General Information





Letter from the President

Greetings!

At the University of West Georgia, we aspire to become the best comprehensive university in the nation, sought after as the best place to work, learn, and succeed. Over the last three years, we have implemented a number of cultural and operational initiatives designed to move us toward that goal. Strategic planning, assessment, and continuous improvement are – and will continue to be – critical to our ability to sustain a culture of high performance and evidence-based leadership.

Our Fact Book, then, becomes not merely a collection of statistics or interesting facts, but rather a measure of our progress toward the goals we have set for ourselves. On our Engage West! Website, you will find my scorecard, the scorecards of the five university vice presidents, and our institutional KPIs as well as our complete strategic plan. You will see that our strategic imperatives are Student Success, Academic Success, Partnership Success, and Operational Success.

This is an exciting time for UWG. We are honoring the past while forging a new West. In the new West, each university employee knows how he or she fits into the university's overarching mission and plan, has personal goals aligned to the department and the university, and has access to the professional development necessary to reach the set goals. Each is responsible for meeting or making significant progress toward his or her goals – and for assessing them annually to ensure the goals are still relevant.

As we move into the future, every employee at our institution will contribute, either directly or indirectly, to the retention, progression, and graduation of our students. We are building an environment where people will know what to do, why they are doing it, and what we intend to accomplish. At the same time, these people will be engaged and part of solution-making! Every employee will contribute to planning, assessment, and continuous improvement efforts. People...Purpose...Action - And every employee will help us become the best place to work, learn, and succeed.

Sincerely,

Dr. Kyle Marrero

President



History of the University

The University of West Georgia was established as an Agricultural and Mechanical School in 1906. The School became a junior college in 1933 and was named West Georgia College. The Board of Regents of the University System of Georgia authorized the College to confer the Bachelor of Science Degree in 1957, which made it a four-year college. West Georgia College was officially named State University of West Georgia in 1996 and University of West Georgia in 2005.

The Board of Regents authorized the addition of a three-year program in 1939 and a graduate program at the master's level in 1967. The Board approved a cooperative external degree program between Dalton College and the University in 1983, and opened the UWG-Newnan in 1988.

The seven schools and colleges within the University are the College of Arts and Humanities, College of Science and Mathematics, College of Education, College of Social Sciences, Richards College of Business, Honors College and Trans-Disciplinary Programs, and Tanner Health System School of Nursing.

The Honors Program began in 1975 and became Georgia's first Honors College in 1999.

The Commission on Colleges and the Southern Association of Colleges and Schools first accredited the University in 1936. The University was last reaffirmed in 2014. The University is scheduled to receive its next reaffirmation of accreditation review in 2024.

Presidents

Irving S. Ingram (1933-1960)

William H. Row (1960 - 1961)

James E. Boyd (1961-1971)

Ward Pafford (1971-1975)

Maurice K. Townsend (1975-1993)

Beheruz N. Sethna (1994-2013)

Kyle Marrero (2013-Present)

Source: Institutional Effectiveness and Assessment



UWG Vision, Mission and Values

Vision

The University of West Georgia aspires to be the best comprehensive university in America – sought after as the [best place to work, learn, and succeed!](#)

Mission

The mission is to enable students, faculty, and staff to realize their full potential through academic engagement, supportive services, professional development, and a caring, student-centered community. UWG is committed to academic excellence and to community engagement, offering high-quality undergraduate, graduate, and community programs on-campus, off-campus, and online.

UWG, a charter member of the University System of Georgia (USG), is a comprehensive, SACSCOC level VI, public university, based in Carrollton, Georgia with multiple instructional sites and a strong virtual presence. UWG supports students in their efforts to complete degrees in relevant programs, valuing liberal arts and professional preparation. Through effective and innovative teaching, experiential learning, scholarship, research, creative endeavor, and public service, UWG equips graduates to engage with and discover knowledge. UWG is dedicated to building on existing strengths and developing distinctive academic, research, and co-curricular programs and services that respond to economic development and identified regional, state and global needs, thus empowering alumni to contribute responsibly and creatively to a complex 21st Century global society.





UWG Vision, Mission and Values Continued

Values

The institutional mission and daily operation of the University of West Georgia are guided by our values that support our vision to be the best place to work, learn, and succeed.

The value of **achievement** is evident in our commitment to the academic and social success of our students, staff, and faculty.

The value of **caring** is evident in our consistent concern and regard for our students, staff, and faculty as well as the larger communities where we live and whom we serve.

The value of **collaboration** is evident in our commitment to shared governance, teamwork, and a cooperative spirit that shape our interactions with students, staff, and faculty, and the communities we serve.

The value of **inclusiveness** is evident in our commitment to celebrating our diversity, our collaborative spirit, and creating a welcoming campus that is emotionally and physically safe for all.

The value of **innovation** is evident in our commitment to fostering a learning atmosphere in which new methods and ideas consistent with our vision and mission are respected and rewarded.

The value of **integrity** is evident in our commitment to rigorous ethical standards in our classrooms and offices, in our conduct toward each other, and in service to our communities.

The value of **sustainability** is evident in our obligation to maintaining ecological balance in our planning and operations that make possible for future generations the same or better quality of opportunities for success available to present employees and students.

The value of **wisdom** is evident in our commitment to teaching and learning that emphasizes knowledge for the purpose of positively transforming the lives of our employees and students, as well as improving the world in which we live.

The Strategic Plan is at www.westga.edu/assetsADV/newpresident/StrategicPlan_Brochure_pages.pdf



University System of Georgia Board of Regents

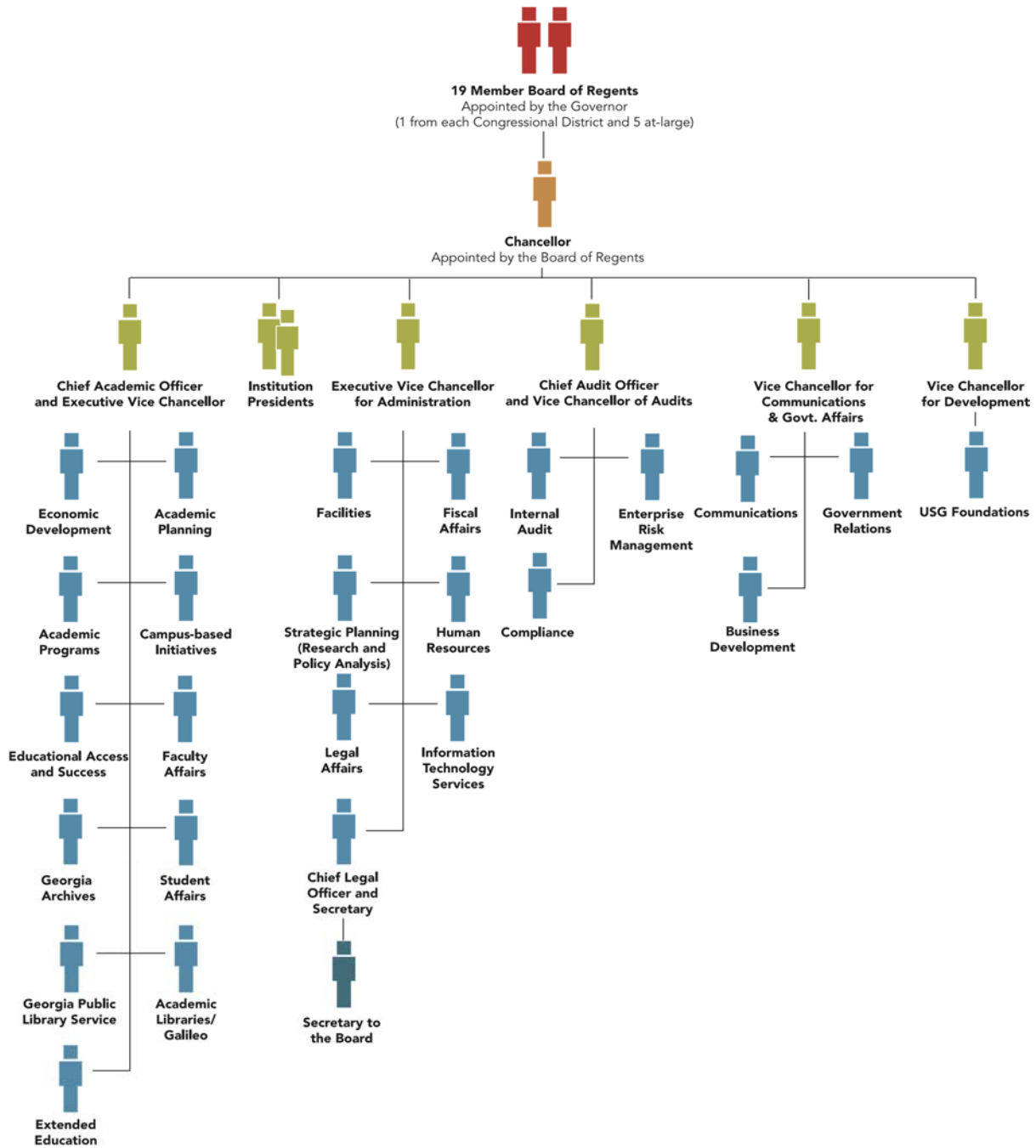
The Board of Regents of the University System of Georgia was created in 1931 as a part of a reorganization of Georgia's state government. With this act, public higher education in Georgia was unified for the first time under a single governing and management authority. The governor appoints members of the Board to a seven-year term and regents may be reappointed to subsequent terms by a sitting governor. Regents donate their time and expertise to serve the state through their governance of the University System of Georgia – the position is a voluntary one without financial remuneration. Today the Board of Regents is composed of 19 members, five of whom are appointed from the state-at-large, and one from each of the state's 14 congressional districts. The Board elects a chancellor who serves as its chief executive officer and the chief administrative officer of the University System. The Board oversees the public colleges and universities that comprise the University System of Georgia and has oversight of the Georgia Archives and the Georgia Public Library System. The Board members are:

W. Paul Bowers	Atlanta	<i>At-Large</i>
James M. Hull	Augusta	<i>At-Large</i>
Donald M. Leebern, Jr.	McDonough	<i>At-Large</i>
Thomas Rogers Wade	Atlanta	<i>At-Large</i>
Larry Walker	Perry	<i>At-Large</i>
<i>Districts</i>		
C. Dean Alford	Conyers	<i>Fourth</i>
Larry R. Ellis	Atlanta	<i>Fifth</i>
Rutledge A. (Rusty) Griffin, Jr.	Valdosta	<i>Eighth</i>
C. Thomas Hopkins, Jr.	Griffin	<i>Third</i>
Laura Marsh	Statesboro	<i>Twelfth</i>
Doreen Stiles Poitevint	Bainbridge	<i>Second</i>
Neil L. Pruitt, Jr.	Norcross	<i>Eleventh</i>
Sachin Shailendra	Atlanta	<i>Thirteenth</i>
E. Scott Smith	Ringgold	<i>Fourteenth</i>
Kessel Stelling, Jr.	Columbus	<i>Sixth</i>
Ben J. Tarbutton III	Sandersville	<i>Tenth</i>
Richard L. Tucker	Duluth	<i>Seventh</i>
Don L. Waters	Savannah	<i>First</i>
Philip A. Wilheit, Sr.	Gainesville	<i>Ninth</i>

Source: University System of Georgia, Fall 2016



University System of Georgia Organizational Chart



Source: University System of Georgia, Fall 2016



University System of Georgia Institutions

Research Universities

Augusta University



Georgia Institute of Technology



Georgia State University



University of Georgia



Comprehensive Universities

Georgia Southern University



Kennesaw State University



University of West Georgia



Valdosta State University



State Universities

Albany State University



Armstrong State University



Clayton State University



Columbus State University



Fort Valley State University



Georgia College & State University



Note: Georgia Perimeter College was consolidated with Georgia State University



University System of Georgia Institutions Continued

State Universities Continued

Georgia Southwestern State University



Middle Georgia State University



Savannah State University



University of North Georgia



State Colleges

Abraham Baldwin Agricultural College



Atlanta Metropolitan State College



Bainbridge State College



College of Coastal Georgia



Dalton State College



Darton State College



East Georgia State College



Georgia Gwinnett College



Georgia Highlands College



Gordon State College



South Georgia State College



Source: University System of Georgia, Fall 2016



University of West Georgia
Administration
***Fall 2016**

General

Dr. Kyle Marrero	<i>President</i>	
Dr. Myrna Gantner	<i>Interim Provost and Vice President</i>	Academic Affairs
Mr. James E. Sutherland	<i>Senior Vice President</i>	Business and Finance
Dr. Scot Lingrell	<i>Vice President</i>	Student Affairs and Enrollment Management
Ms. Annemarie Eades	<i>Vice President and CIO</i>	Information Technology Services
Mr. David Fraboni	<i>Vice President</i>	University Advancement

Academics

Dr. Pauline Gagnon	<i>Interim Dean</i>	College of Arts and Humanities
Dr. Dianne Hoff	<i>Dean</i>	College of Education
Dr. Lok Lew Yan Voon	<i>Dean</i>	College of Science and Mathematics
Dr. N. Jane McCandless	<i>Dean</i>	College of Social Sciences
Dr. Melanie Clay	<i>Executive Director and Dean</i>	Extended Learning Programs
Dr. Janet Donohoe	<i>Dean</i>	Honors College
Dr. Faye McIntyre	<i>Dean</i>	Richards College of Business
Dr. Lorene Flanders	<i>Dean</i>	Libraries
Dr. Jennifer Schuessler	<i>Dean</i>	Tanner Health System School of Nursing

*As of the beginning of Fall Semester.

Source: *Institutional Effectiveness and Assessment*



Other Administration *Fall 2016

College of Arts and Humanities

Dr. Kevin Shunn	<i>Chair</i>	Art
Dr. Meg Pearson	<i>Chair</i>	English and Philosophy
Dr. Robert Kilpatrick	<i>Interim Chair</i>	Foreign Languages and Literatures
Dr. Steve Goodson	<i>Chair</i>	History
Dr. Kevin Hibbard	<i>Chair</i>	Music
Ms. Rochelle Elman	<i>Interim Chair</i>	Theatre

College of Education

Dr. Mark Parrish	<i>Chair</i>	Communication Sciences and Professional Counseling
Dr. Jill Drake	<i>Chair</i>	Early Childhood through Secondary Education
Dr. Lara Wilox	<i>Chair</i>	Educational Technology and Foundations
Dr. Andy Nixon	<i>Chair</i>	Leadership, Research, and School Improvement
Dr. John Ponder	<i>Chair</i>	Literacy and Special Education
Dr. Brian Mosier	<i>Chair</i>	Sport Management, Wellness, and Physical Education

Richards College of Business

Dr. Ron Colley	<i>Chair</i>	Accounting and Finance
Dr. William Smith	<i>Chair</i>	Economics
Dr. Thomas Gainey	<i>Chair</i>	Management
Dr. Salil Talpade	<i>Chair</i>	Marketing and Real Estate

*As of the beginning of Fall Semester.

Source: *Institutional Effectiveness and Assessment*



Other Administration Continued

*Fall 2016

College of Sciences and Mathematics

Dr. Christopher Tabit	<i>Chair</i>	Biology
Dr. Sharmistha Basu-Dutt	<i>Chair</i>	Chemistry
Dr. Adel Abunawass	<i>Chair</i>	Computer Science
Dr. James R. Mayer	<i>Chair</i>	Geosciences
Dr. Amin Boumenir	<i>Chair</i>	Mathematics
Dr. Julie Talbot	<i>Chair</i>	Physics

College of Social Sciences

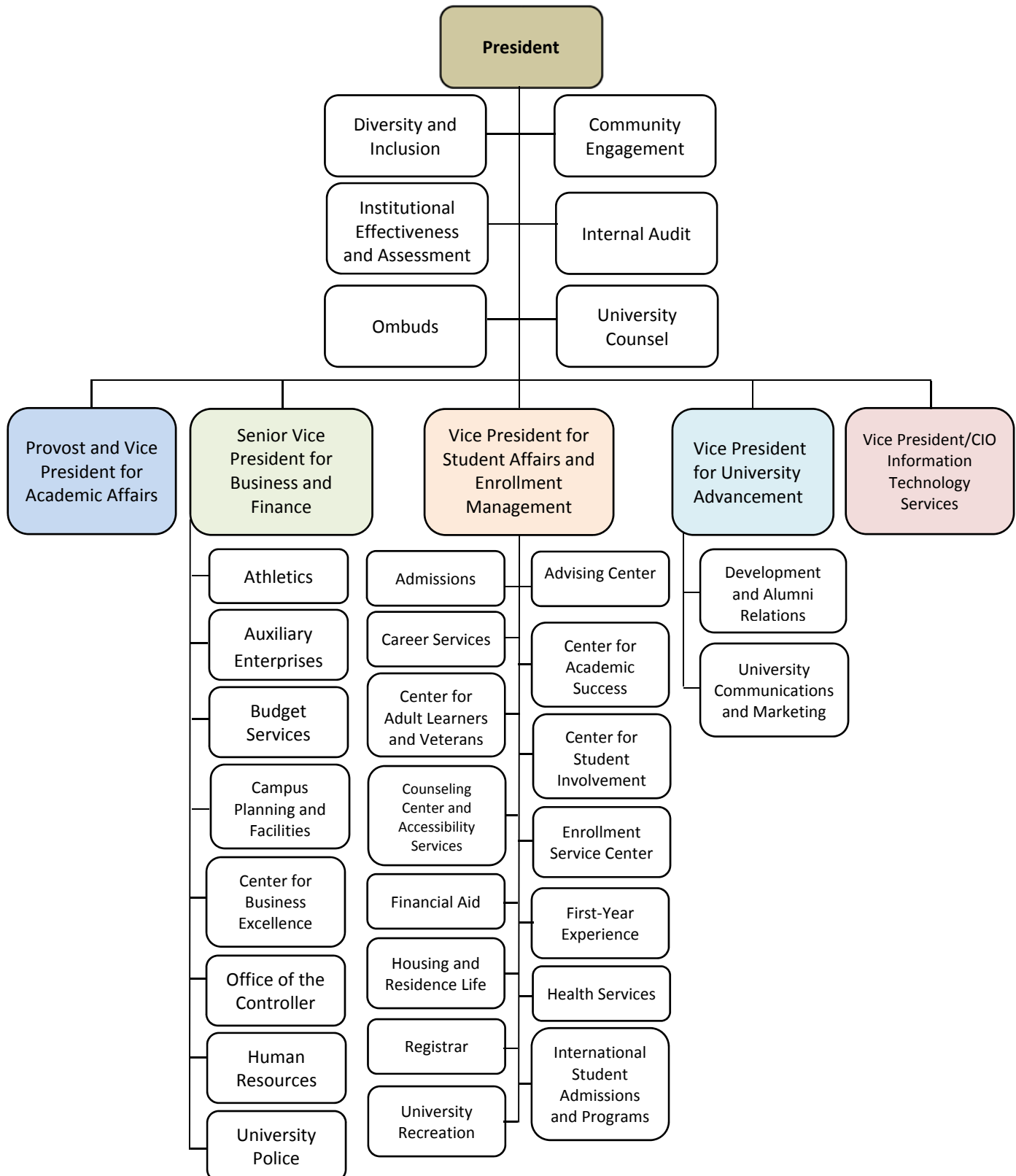
Dr. Lisa Gezon	<i>Chair</i>	Anthropology
Dr. Jeffrey Reber	<i>Interim Chair</i>	Criminology
Dr. Camilla Gant	<i>Chair</i>	Mass Communications
Dr. J. Salvador Peralta	<i>Chair</i>	Political Science
Dr. Donadrian Rice	<i>Chair</i>	Psychology
Dr. Amber Smallwood	<i>Interim Chair</i>	Sociology

*As of the beginning of Fall Semester.

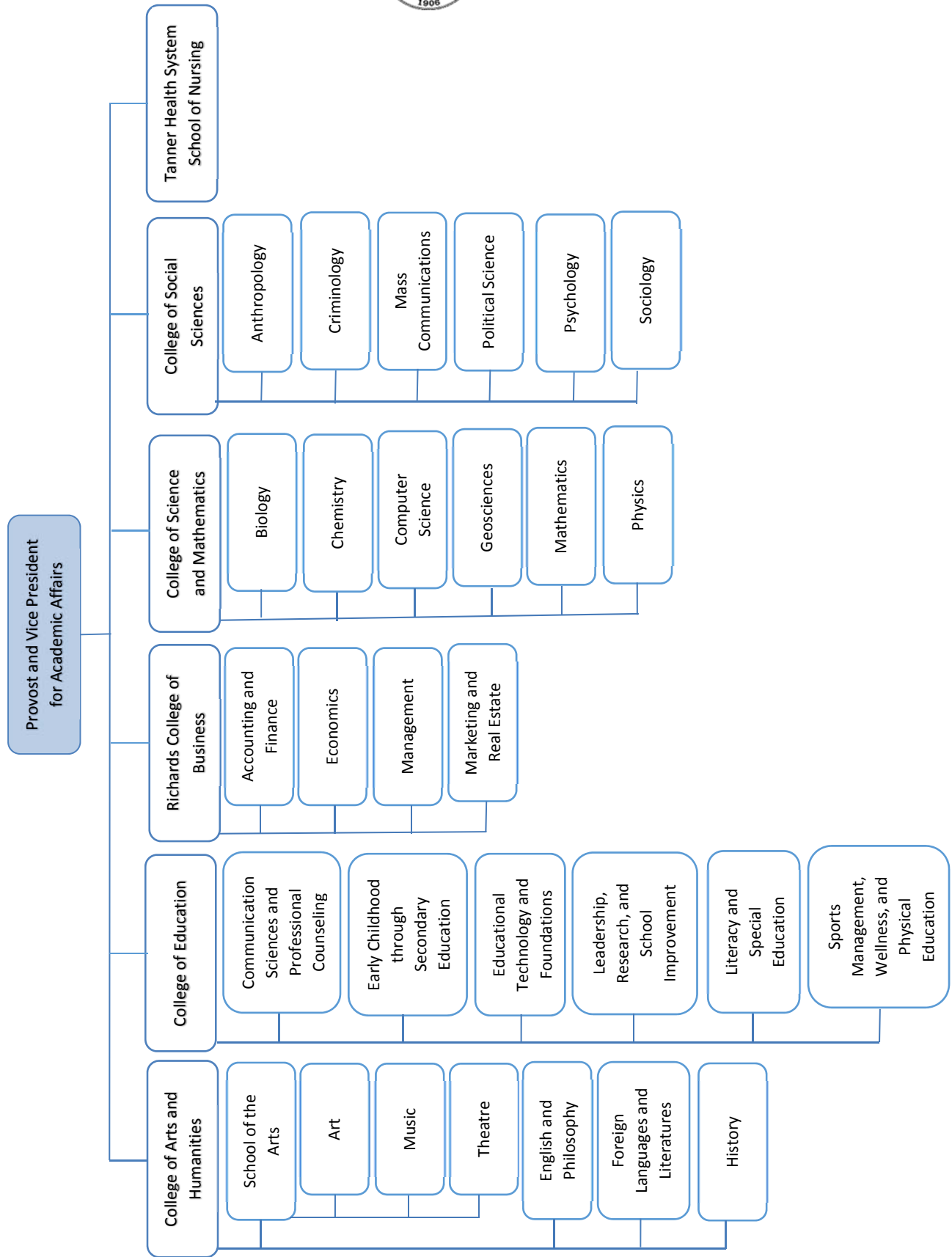
Source: *Institutional Effectiveness and Assessment*



The Administration Fall 2016

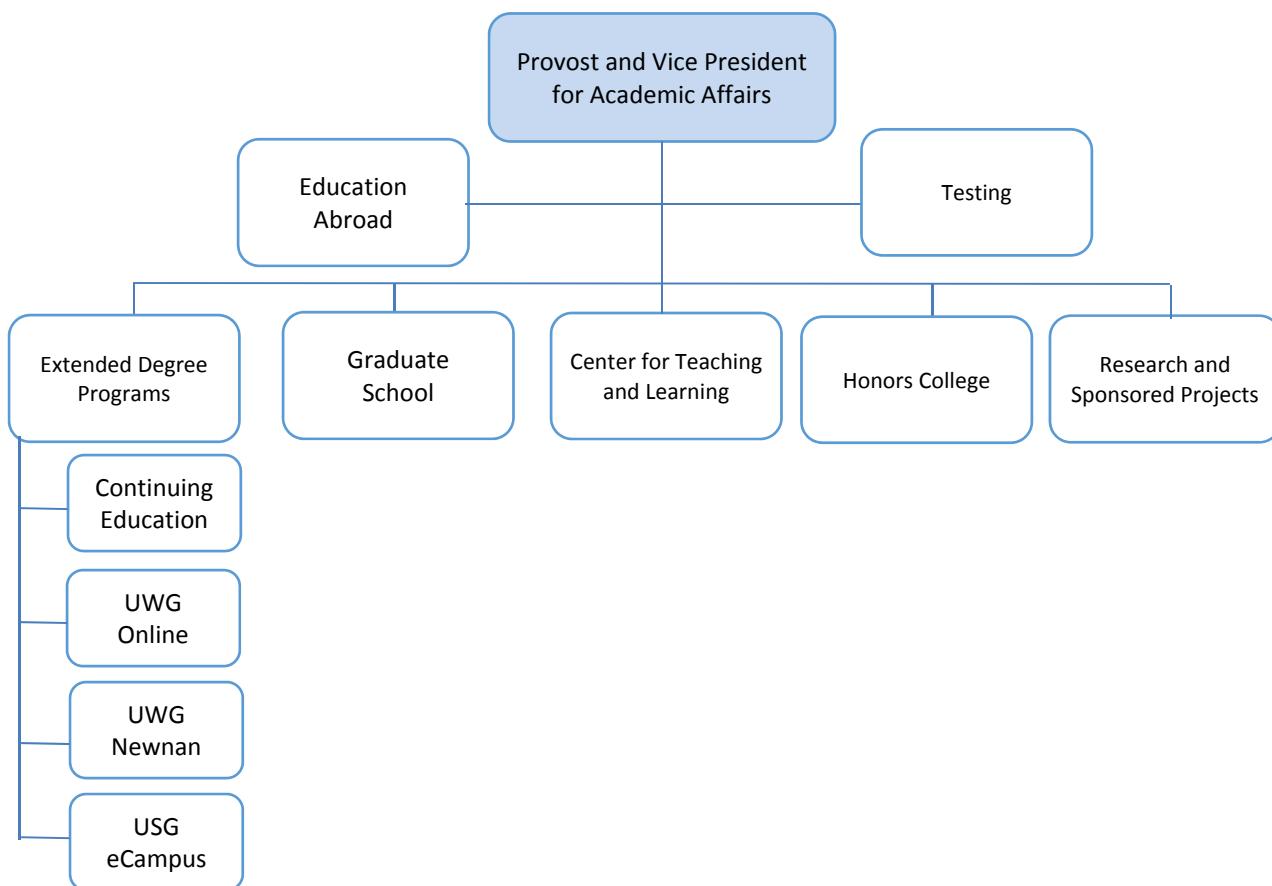


Colleges, School, and Departments Fall 2016





Colleges, School, and Departments Continued Fall 2016



Source: *Institutional Effectiveness and Assessment*



UWG Foundation Board of Trustees 2016-2017

Executive Committee

Mr. J. Thomas (Tommy) Vance	<i>Chair</i>
Mrs. Cindy S. Denney '86, '92	<i>Vice Chair</i>
Mr. K. Alexander (Alex) Roush	<i>Secretary and Investment Committee Chair</i>
Mr. David Fraboni	<i>Executive Director/Treasurer</i>
Mr. Howard B. (Rocky) Lipham, III '90	<i>Past Chair</i>
Dr. Kyle Marrero	<i>University of West Georgia President</i>
Mrs. Edith F. Haney '89	<i>Board Development Committee Chair</i>
Mr. R. Gerald McCarley '59	<i>Audit Committee Chair</i>
Mr. Luis A. Planas, Sr. '72	<i>Resource Development Committee Chair</i>

Board Members

Dr. Richie Bland	Mr. Dennis McEntire
Mr. George W. Brooks, Jr. '84	Mr. Stanley McWhorter '69 '91
Mr. A. Paul Cadenhead '44**	Mr. William A. Moye '70
Mr. Robert W. Coggin	Ms. Ann Newman '01
Mrs. Melissa Dugan '87	Mr. Cade Parian '00
Mr. Bill Esslinger '93	Mr. L. Richard Plunkett
Mr. James A. Gill**	Mr. Randall Redding
Mr. Loy Howard	Mrs. Cindy Saxon '82 '91 '94
Mr. Phillip Kauffman**	Dr. Beheruz N. Sethna ^
Mr. Gary Kinard '91	Mrs. Edith (Edie) F. Haney '89
Mr. R. David Knight '73	Mrs. Gloria Stewart '81
Dr. Bruce Lyon	Mr. Robert J. Stone**
Mr. Tim Martin '08	Mr. Jim Sutherland

** *Honorary Member*

^ *Honorary Trustee*

Source: *Development and Alumni Relations*



Accreditations and Affiliations

The University of West Georgia is accredited by the Southern Association of Colleges and Schools Commission on Colleges to award baccalaureate, masters, education specialists, and doctorate degrees. For questions about accreditation of the University of West Georgia contact the Commission on Colleges at 1866 Southern Lane, Decatur, Georgia 30033-4097 or call 404-679-4501.

The purpose of publishing the Commission's address and contact number is to enable interested constituents (1) to learn about the accreditation status of the institution, (2) to file a third-party comment at the time of the institution's decennial review, or (3) to file a complaint against the institution for alleged non-compliance with a standard or requirement. However, inquiries about the institution, such as admission requirements, financial aid, educational programs, etc., should be addressed directly to the institution and not to the Commission's office.

Accreditations also include the following:

- *The Association to Advance Collegiate Schools of Business (International)*
- *Commission on Collegiate Nursing Education*
- *Computing Accreditation Commission of Accreditation Board for Engineering and Technology, Inc.*
- *Council for Accreditation of Counseling and Related Educational Programs*
- *Council on Academic Accreditation in Audiology and Speech-Language Pathology of the American Speech-Language Hearing Association*
- *Council for the Accreditation of Educator Preparation*
- *National Association of Schools of Arts and Design*
- *National Association of Schools of Music*
- *National Association of Schools of Public Affairs and Administration*
- *National Association of Schools of Theatre*

Organizations in which the University holds institutional membership include the American Council on Education, the American Chemical Society, the American Association of State Colleges and Universities, the American Association of Colleges for Teacher Education, the Association of American Colleges and Universities, the Council for Adult and Experiential Learning, the Council on Graduate Schools, the National Association for Business Teacher Education, the Georgia Association of Colleges for Teacher Education, and the National Collegiate Honors Council.

Source: Institutional Effectiveness and Assessment



Degrees and Majors Authorized 2016-2017

CIP CODE	Bachelor of Arts with a Major in:
50070101	Art
23010101	English
16999901	Foreign Languages and Literatures
45090102	Global Studies
54010100	History, General
45060500	International Economic Affairs
38010100	Philosophy
45100101	Political Science
50050101	Theatre
CIP CODE	Bachelor of Business Administration with a Major in:
52030100	Accounting
52060101	Economics
52080101	Finance
52020101	Management
52120101	Management Information Systems
52140101	Marketing
52150100	Real Estate
50070101	Bachelor of Fine Arts with a Major in Art
CIP CODE	Bachelor of Music with a Major in:
50090401	Composition
13131200	Music Teacher Education
50090301	Performance
CIP CODE	Bachelor of Science in Education with a Major in:
13100100	Special Education and Teaching, General
13120201	Early Childhood Education
13131401	Physical Education
51020301	Speech-Language Pathology
51380101	Bachelor of Science in Nursing
51380105	Bachelor of Science in Nursing, RN to BSN



Degrees and Majors Authorized Continued 2016-2017

CIP CODE	Bachelor of Science with a Major in:
45020100	Anthropology
26010101	Biology
40050100	Chemistry
11010101	Computer Science
45040101	Criminology
45060100	Economics, General
45070100	Geography
40060101	Geology
51000101	Health and Community Wellness
09040101	Mass Communications
27010101	Mathematics
52021300	Organizational Leadership (eMajor Affiliate Institutional Program)
40080101	Physics
45100101	Political Science
42010101	Psychology
45110100	Sociology
31030101	Sport Management
CIP CODE	Master of Arts with a Major in
45040100	Criminology
23010101	English
54010100	History, General
42010101	Psychology
45110100	Sociology
52030100	Master of Professional Accounting
13120601	Master of Arts in Teaching
52020100	Master of Business Administration
CIP CODE	Master of Education with a Major in:
13130301	Business Education
13120201	Early Childhood Education
13040101	Educational Leadership
13050101	Media
13110101	Professional Counseling
13131501	Reading Instruction
13120501	Secondary Education
13100100	Special Education and Teaching, General
51020301	Speech-Language Pathology



Degrees and Majors Authorized Continued 2016-2017

CIP CODE	Master of Music with a Major in:
13131200	Music Teacher Education
50090301	Performance
44040100	Master of Public Administration
CIP CODE	Master of Science with a Major in:
11070101	Applied Computer Science
26010101	Biology
27019901	Mathematics
51380105	Nursing
42280201	Doctor of Philosophy in Psychology: Consciousness and Society
CIP CODE	Doctor of Education with a Major in:
13999901	School Improvement
51381701	Nursing Education
13110101	Doctor of Education in Professional Counseling and Supervision
CIP CODE	Specialist in Education with a Major in:
13120201	Early Childhood Education
13040101	Educational Leadership
13050101	Media
13110101	Professional Counseling
13100101	Special Education
CIP CODE	Post-Baccalaureate Certificate In:
45010201	Data Analysis and Evaluation Methods
05010601	European Union Studies
45079901	Geographic Information Systems
51999901	Intergrative Health Studies
30140101	Museum Studies
44020101	Nonprofit Management and Community Development
13060101	Program Evaluation
54010501	Public History
44040101	Public Management
CIP CODE	Post-Master's Certificate In:
51380201	Health Systems Leadership
51389901	Nursing Education

Source: USG Degrees and Majors Authorized Report



Historical Information





Total Enrollment and Student Credit Hours (SCH) by Course Level Fiscal Years 2013-2017

Fiscal Years	Lower Level			Upper Level			Graduate Level			Total	
	Head Count	SCH	Avg. SCH	Head Count	SCH	Avg. SCH	Head Count	SCH	Avg. SCH	SCH	FTE*
2012-2013											
Summer 2012	1,487	15,011	10.1	2,546	13,476	5.3	1,156	6,802	5.9	35,289	3,069
Fall 2012	5,803	83,222	14.3	4,160	44,309	10.7	1,806	11,689	6.5	139,220	10,638
Spring 2013	4,823	72,985	15.1	4,354	44,340	10.2	1,746	11,416	6.5	128,741	9,833
Total		171,218			102,125			29,907		303,250	
2013-2014											
Summer 2013	1,326	12,406	9.4	2,313	12,008	5.2	1,252	7,516	6.0	31,930	2,800
Fall 2013	5,929	85,373	14.4	4,030	44,276	11.0	1,970	13,201	6.7	142,850	10,845
Spring 2014	4,943	75,889	15.4	4,393	44,714	10.2	1,843	12,261	6.7	132,864	10,035
Total		173,668			100,998			32,978		307,644	
2014-2015											
Summer 2014	1,314	11,721	8.9	2,287	11,616	5.1	1,276	7,572	5.9	30,909	2,721
Fall 2014	6,110	88,975	14.6	4,139	44,205	10.7	1,957	13,141	6.7	146,321	11,077
Spring 2015	5,139	77,862	15.2	4,354	44,778	10.3	1,902	12,573	6.6	135,213	10,197
Total		178,558			100,599			33,286		312,443	
2015-2016											
Summer 2015	1,405	12,394	8.8	2,377	12,155	5.1	1,452	8,862	6.1	33,411	2,963
Fall 2015	6,486	93,467	14.4	4,267	45,716	10.7	2,081	13,875	6.7	153,058	11,530
Spring 2016	5,528	81,387	14.7	4,511	46,766	10.4	1,963	12,776	6.5	140,929	10,667
Total		187,248			104,637			35,513		327,398	
2016-2017											
Summer 2016	1,496	13,080	8.7	2,548	13,674	5.4	1,582	9,791	6.2	36,545	3,231
Fall 2016	6,797	97,745	14.4	4,358	46,395	10.6	2,153	13,888	6.5	158,028	11,877
Spring 2017	5,807	83,611	14.4	4,621	48,829	10.6	2,107	13,633	6.5	146,073	11,059
Total		194,436			108,898			37,312		340,646	

Average SH = Credit Hour/Headcount

Credit hours as of USG census date.

*FTE definition set by the Board of Regents (Total full-time undergraduate students taking 12 or more hours + total full-time graduate students taking 9 or more hours) + (Total part-time undergraduate credit hours/12 + total part-time graduate credit hours/9) Fractional values are truncated per USG/BOR methodology.

Source: Institutional Effectiveness and Assessment



**College of Arts and Humanities
Student Credit Hours by Course Level
Fiscal Years 2013-2017**

<i>Fiscal Years</i>	<i>Lower Level</i>	<i>Upper Level</i>	<i>Graduate Level</i>	<i>Total</i>
2012-2013				
Summer 2012	4,226	1,389	200	5,815
Fall 2012	28,958	4,824	646	34,428
Spring 2013	25,812	5,072	652	31,536
Total	58,996	11,285	1,498	71,779
2013-2014				
Summer 2013	3,224	1,239	274	4,737
Fall 2013	29,231	4,542	589	34,362
Spring 2014	27,150	4,708	498	32,356
Total	59,605	10,489	1,361	71,455
2014-2015				
Summer 2014	3,016	1,000	232	4,248
Fall 2014	31,095	4,512	620	36,227
Spring 2015	27,652	4,775	494	32,921
Total	61,763	10,287	1,346	73,396
2015-2016				
Summer 2015	3,364	871	321	4,556
Fall 2015	32,660	4,616	525	37,801
Spring 2016	29,283	4,854	459	34,596
Total	65,307	10,341	1,305	76,953
2016-2017				
Summer 2016	3,379	1,169	355	4,903
Fall 2016	34,030	4,681	397	39,108
Spring 2017	30,155	4,907	437	35,499
Total	67,564	10,757	1,189	79,510

Credit hours as of USG census date.

Note: UWG 1101, XIDS, and other interdisciplinary credit hours are attributed to individual colleges based on course instructor.

Source: *Institutional Effectiveness and Assessment*



**College of Education
Student Credit Hours by Course Level
Fiscal Years 2013-2017**

<i>Fiscal Years</i>	<i>Lower Level</i>	<i>Upper Level</i>	<i>Graduate Level</i>	<i>Total</i>
2012-2013				
Summer 2012	1,016	1,591	5,339	7,946
Fall 2012	3,621	10,223	7,248	21,092
Spring 2013	3,242	10,288	7,152	20,682
Total	7,879	22,102	19,739	49,720
2013-2014				
Summer 2013	576	1,317	5,878	7,771
Fall 2013	3,480	9,535	8,194	21,209
Spring 2014	3,085	9,557	7,578	20,220
Total	7,141	20,409	21,650	49,200
2014-2015				
Summer 2014	657	1,281	5,610	7,548
Fall 2014	3,778	8,262	8,100	20,140
Spring 2015	3,107	8,196	7,614	18,917
Total	7,542	17,739	21,324	46,605
2015-2016				
Summer 2015	555	1,119	6,630	8,304
Fall 2015	3,432	7,449	9,203	20,084
Spring 2016	3,471	8,062	8,267	19,800
Total	7,458	16,630	24,100	48,188
2016-2017				
Summer 2016	795	1,350	7,731	9,876
Fall 2016	3,556	7,887	9,553	20,996
Spring 2017	3,876	8,688	9,315	21,879
Total	8,227	17,925	26,599	52,751

Credit hours as of USG census date.

Note: UWG 1101, XIDS, and other interdisciplinary credit hours are attributed to individual colleges based on course instructor.

Source: *Institutional Effectiveness and Assessment*



College of Science and Mathematics
Student Credit Hours by Course Level
Fiscal Years 2013-2017

<i>Fiscal Years</i>	<i>Lower Level</i>	<i>Upper Level</i>	<i>Graduate Level</i>	<i>Total</i>
2012-2013				
Summer 2012	5,668	1,315	294	7,277
Fall 2012	27,421	5,945	601	33,967
Spring 2013	24,921	5,410	523	30,854
Total	58,010	12,670	1,418	72,098
2013-2014				
Summer 2013	4,859	893	270	6,022
Fall 2013	27,717	5,449	831	33,997
Spring 2014	25,358	5,148	672	31,178
Total	57,934	11,490	1,773	71,197
2014-2015				
Summer 2014	4,345	1,021	418	5,784
Fall 2014	29,395	5,235	771	35,401
Spring 2015	26,215	5,093	603	31,911
Total	59,955	11,349	1,792	73,096
2015-2016				
Summer 2015	4,440	1,230	419	6,089
Fall 2015	30,845	5,018	590	36,453
Spring 2016	27,385	5,204	491	33,080
Total	62,670	11,452	1,500	75,622
2016-2017				
Summer 2016	4,648	1,164	319	6,131
Fall 2016	32,434	4,639	516	37,589
Spring 2017	27,714	4,557	450	32,721
Total	64,796	10,360	1,285	76,441

Credit hours as of USG census date.

Note: UWG 1101, XIDS, and other interdisciplinary credit hours are attributed to individual colleges based on course instructor.

Source: *Institutional Effectiveness and Assessment*



**College of Social Science
Student Credit Hours by Course Level
Fiscal Year 2013-2017**

<i>Fiscal Years</i>	<i>Lower Level</i>	<i>Upper Level</i>	<i>Graduate Level</i>	<i>Total</i>
2012-2013				
Summer 2012	2,502	3,528	322	6,352
Fall 2012	14,834	9,218	1,525	25,577
Spring 2013	12,508	9,982	1,335	23,825
Total	29,844	22,728	3,182	55,754
2013-2014				
Summer 2013	1,908	3,603	296	5,807
Fall 2013	16,591	9,947	1,481	28,019
Spring 2014	13,966	11,031	1,338	26,335
Total	32,465	24,581	3,115	60,161
2014-2015				
Summer 2014	2,128	3,294	264	5,686
Fall 2014	16,178	11,073	1,478	28,729
Spring 2015	14,384	11,976	1,401	27,761
Total	32,690	26,343	3,143	62,176
2015-2016				
Summer 2015	2,453	3,528	328	6,309
Fall 2015	17,265	12,083	1,356	30,704
Spring 2016	14,576	13,426	1,291	29,293
Total	34,294	29,037	2,975	66,306
2016-2017				
Summer 2016	2,522	4,159	287	6,968
Fall 2016	18,599	12,404	1,327	32,330
Spring 2017	15,349	14,320	1,387	31,056
Total	36,470	30,883	3,001	70,354

Credit hours as of USG census date.

Note: UWG 1101, XIDS, and other interdisciplinary credit hours are attributed to individual colleges based on course instructor.

Source: *Institutional Effectiveness and Assessment*



Richards College of Business
Student Credit Hours by Course Level
Fiscal Year 2013-2017

<i>Fiscal Years</i>	<i>Lower Level</i>	<i>Upper Level</i>	<i>Graduate Level</i>	<i>Total</i>
2012-2013				
Summer 2012	1,213	4,419	642	6,274
Fall 2012	5,858	10,733	882	17,473
Spring 2013	5,798	10,492	1,041	17,331
Total	12,869	25,644	2,565	41,078
2013-2014				
Summer 2013	1,297	3,983	738	6,018
Fall 2013	5,777	11,161	1,155	18,093
Spring 2014	5,706	11,151	1,380	18,237
Total	12,780	26,295	3,273	42,348
2014-2015				
Summer 2014	1,173	4,146	927	6,246
Fall 2014	5,944	11,642	1,359	18,945
Spring 2015	5,862	11,574	1,666	19,102
Total	12,979	27,362	3,952	44,293
2015-2016				
Summer 2015	1,192	4,480	1,032	6,704
Fall 2015	6,550	12,891	1,347	20,788
Spring 2016	5,994	11,794	1,539	19,327
Total	13,736	29,165	3,918	46,819
2016-2017				
Summer 2016	1,313	4,768	978	7,059
Fall 2016	5,872	12,962	1,087	19,921
Spring 2017	5,839	12,827	1,224	19,890
Total	13,024	30,557	3,289	46,870

Credit hours as of USG census date.

Note: UWG 1101, XIDS, and other interdisciplinary credit hours are attributed to individual colleges based on course instructor.

Source: *Institutional Effectiveness and Assessment*



**Tanner Health Systems School of Nursing
Student Credit Hours by Course Level
Fiscal Year 2013-2017**

<i>Fiscal Years</i>	<i>Lower Level</i>	<i>Upper Level</i>	<i>Graduate Level</i>	<i>Total</i>
2012-2013				
Summer 2012	330	1,234	5	1,569
Fall 2012	312	3,366	787	4,465
Spring 2013	12	3,096	713	3,821
Total	654	7,696	1,505	9,855
2013-2014				
Summer 2013	360	973	60	1,393
Fall 2013	387	3,642	951	4,980
Spring 2014	24	3,119	795	3,938
Total	771	7,734	1,806	10,311
2014-2015				
Summer 2014	360	874	121	1,355
Fall 2014	357	3,481	813	4,651
Spring 2015	20	3,164	795	3,979
Total	737	7,519	1,729	9,985
2015-2016				
Summer 2015	390	927	132	1,449
Fall 2015	435	3,659	854	4,948
Spring 2016	32	3,426	729	4,187
Total	857	8,012	1,715	10,584
2016-2017				
Summer 2016	423	1,064	121	1,608
Fall 2016	460	3,822	1,008	5,290
Spring 2017	42	3,530	820	4,392
Total	925	8,416	1,949	11,290

Credit hours as of USG census date.

Note: UWG 1101, XIDS, and other interdisciplinary credit hours are attributed to individual colleges based on course instructor.

Source: *Institutional Effectiveness and Assessment*



University of West Georgia - Newnan
Student Credit Hours by Course Level
Fiscal Year 2013-2017

<i>Fiscal Years</i>	<i>Lower Level</i>	<i>Upper Level</i>	<i>Graduate Level</i>	<i>Total</i>
2012-2013				
Summer 2012	459	897	39	1,395
Fall 2012	1,376	1,768	309	3,453
Spring 2013	1,051	1,706	267	3,024
Total	2,886	4,371	615	7,872
2013-2014				
Summer 2013	468	705	111	1,284
Fall 2013	1,384	1,914	273	3,571
Spring 2014	921	1,353	195	2,469
Total	2,773	3,972	579	7,324
2014-2015				
Summer 2014	336	648	60	1,044
Fall 2014	1,206	1,864	192	3,262
Spring 2015	985	1,375	240	2,600
Total	2,527	3,887	492	6,906
2015-2016				
Summer 2015	294	689	150	1,133
Fall 2015	2,531	1,974	330	4,835
Spring 2016	2,287	1,548	387	4,222
Total	5,112	4,211	867	10,190
2016-2017				
Summer 2016	471	752	270	1,493
Fall 2016	2,761	1,762	378	4,901
Spring 2017	2,442	1,335	480	4,257
Total	5,674	3,849	1,128	10,651

Credit hours as of USG census date.

Source: Institutional Effectiveness and Assessment



Degrees and Awards Conferred Fiscal Years 2012-2016

Fiscal Years	2012	2013	2014	2015	2016
Bachelor of Arts					
Anthropology	3	-	-	-	-
Art	5	1	10	6	6
Chemistry	7	15	4	7	3
Chemistry/Secondary Education	-	-	2	1	-
English	53	43	39	34	35
Foreign Languages and Literatures	9	13	12	9	10
Geography	2	2	1	1	2
Global Studies	2	5	3	4	3
History	37	37	33	28	31
International Economic Affairs	3	6	4	2	5
Mass Communications	53	12	-	-	-
Mathematics	-	1	-	1	1
Philosophy	9	11	12	11	13
Political Science	3	6	1	2	1
Psychology	109	94	114	135	150
Theatre	3	11	8	9	9
Total	298	257	243	250	269
Bachelor of Business Administration					
Accounting	69	72	51	52	68
Economics	10	4	3	4	4
Finance	63	54	73	69	66
Management	117	110	121	102	142
Management Information Systems	25	20	27	29	35
Marketing	96	72	83	81	99
Real Estate	3	2	3	5	-
Total	383	334	361	342	414
Bachelor of Fine Arts with a major in Art	32	26	31	16	28
Bachelor of Science in Chemistry	12	13	9	12	6
Bachelor of Science in Education					
Business Education	5	2	-	-	-
Early Childhood Education	189	178	147	149	126
Middle Grades Education	20	29	24	3	-
Physical Education	19	21	29	11	13
Special Education	19	33	31	32	30
Speech-Language Pathology	30	41	56	61	28
Total	282	304	287	256	197

Degrees and awards not separated by concentration.

Note: Degrees for double majors are reported by first major only. Each year represents summer, fall and spring commencement.

Source: Institutional Effectiveness and Assessment



Degrees and Awards Conferred Fiscal Years 2012-2016 Continued

Fiscal Years		2012	2013	2014	2015	2016
Bachelor of Music						
	Music Education	11	2	8	6	7
	Performance	2	4	3	3	6
	Composition	-	1	1	2	-
Total		13	7	12	11	13
Bachelor of Science						
	Anthropology	17	14	26	17	17
	Biology	106	114	122	93	107
	Biology/Secondary Education	6	-	-	-	-
	Chemistry				8	12
	Computer Science	16	21	31	25	13
	Criminology	40	67	89	92	131
	Earth Science-Secondary Education	3	-	-	-	-
	Economics	13	24	17	17	17
	Economics-Secondary Education	3	-	1	2	-
	Environmental Science	4	4	8	3	2
	Environmental Studies	4	5	6	4	6
	Geography	6	8	7	10	9
	Geology	11	5	10	9	13
	Mass Communications		51	78	88	99
	Mathematics	14	16	14	17	9
	Physics	4	7	8	9	5
	Physics/Secondary Education	-	-	2	1	-
	Political Science	27	32	25	32	29
	Sociology	62	61	50	65	66
	Sport Management	36	39	33	49	54
Total		372	468	527	541	589
Bachelor of Science in Nursing		185	200	190	159	169
Master of Arts						
	Criminology	8	4	7	10	8
	English	9	6	11	3	8
	History	6	5	12	6	11
	Psychology	19	23	23	15	22
	Sociology	1	4	8	6	9
Total		43	42	61	40	58
Master of Arts in Teaching			13	38	48	71
Master of Arts in Teaching (collaborative)			3	-	-	-
Master of Business Administration		62	54	69	72	109
Master of Professional Accounting		14	13	9	15	11

Degrees and awards not separated by concentration.

Note: Degrees for double majors are reported by first major only. Each year represents summer, fall and spring commencement.

Source: *Institutional Effectiveness and Assessment*



Degrees and Awards Conferred Fiscal Years 2012-2016 Continued

Fiscal Years	2012	2013	2014	2015	2016
Master of Education					
Art Education	2	3	1	-	-
Business Education	12	6	2	1	3
Early Childhood Education	60	34	18	30	40
Educational Leadership	4	2	-	-	-
Foreign Languages Teacher Education			1	-	-
Media	46	41	20	48	56
Middle Grades Education	5	9	1	1	-
Physical Education	7	3	-	-	-
Professional Counseling	48	61	58	78	57
Reading Instruction	10	3	3	7	14
Secondary Education	6	3	14	11	7
Spanish Language Teacher Education	1	-	-	-	-
Special Education	54	43	26	22	7
Speech Language Pathology	10	22	19	25	27
Total	265	230	163	223	211
Master of Music					
Music Education	1	1	2	8	14
Performance	1	-	-	1	1
Total	2	1	2	9	15
Master of Public Administration	8	5	9	14	17
Master of Science					
Applied Computer Science	5	-	7	15	27
Biology	11	11	10	4	6
Mathematics	6	4	2	2	5
Total	22	15	19	21	38
Master of Science in Rural and Small Town Planning	2	-	-	-	-
Master in Urban and Regional Planning		1	8	4	-
Master of Science in Nursing	6	25	38	32	23

Degrees and awards not separated by concentration.

Note: Degrees for double majors are reported by first major only. Each year represents summer, fall and spring commencement.

Source: *Institutional Effectiveness and Assessment*



Degrees and Awards Conferred Fiscal Years 2012-2016 Continued

Fiscal Years	2012	2013	2014	2015	2016
Specialist in Education					
Business Education	1	-	-	-	-
Early Childhood Education	8	16	13	12	8
Educational Leadership	28	19	66	21	18
Media	40	86	118	68	76
Middle Grades Education	2	2	-	-	-
Professional Counseling	16	10	13	17	16
Secondary Education	7	1	-	-	-
Special Education	9	16	29	43	38
Total	111	150	239	161	156
Post-Baccalaureate Certificate					
Data Analysis & Evaluation				2	3
Geographic Information Systems	-	3	8	4	4
Intergrative Health Studies		1	-	-	-
Museum Studies	-	3	5	5	6
Non-Profit Mngmnt & Comm.Devlpmnt					1
Public History	1	-	-	1	-
Public Management	-	3	5	-	1
Total	1	10	18	12	15
Post-Master's Certificate					
Health Systems Leadership			2	1	2
Doctor of Education (Ed.D.)					
School Improvement	19	5	15	27	17
Professional Counseling and Supervision	4	6	7	4	3
Nursing Education					4
Total	23	11	22	31	24
Doctor of Philosophy (Ph.D.)					
Psychology: Consciousness and Society		1	1	5	7
Total Degrees and Awards by Level					
Bachelor	1,577	1,609	1660	1,587	1,685
Post-Baccalaureate Certificate	1	10	18	12	15
Post-Master's Certificate			2	1	2
Education Specialist	111	150	239	161	156
Master	424	402	416	478	553
Doctorate	23	12	23	36	31
Total	2,136	2,183	2,358	2,275	2,442

Degrees and awards not separated by concentration.

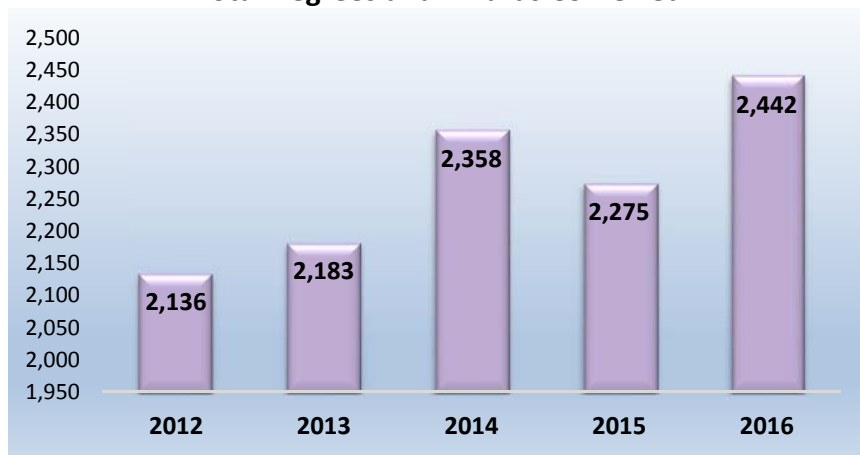
Note: Degrees for double majors are reported by first major only. Each year represents summer, fall and spring commencement.

Source: *Institutional Effectiveness and Assessment*

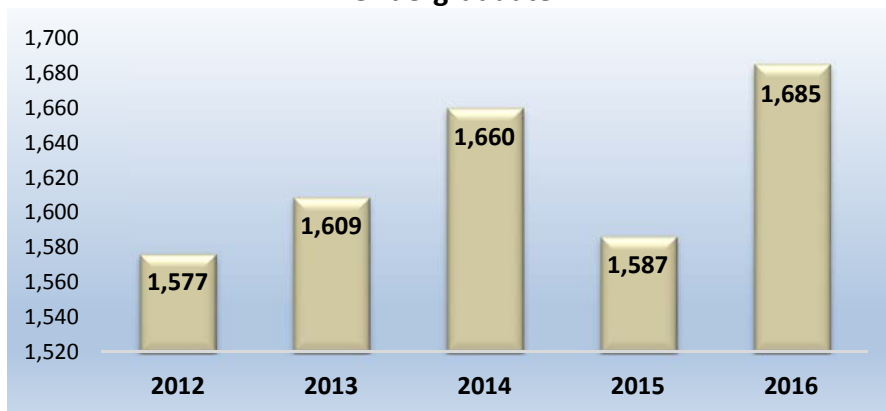


Degrees and Awards Conferred Fiscal Years 2012-2016

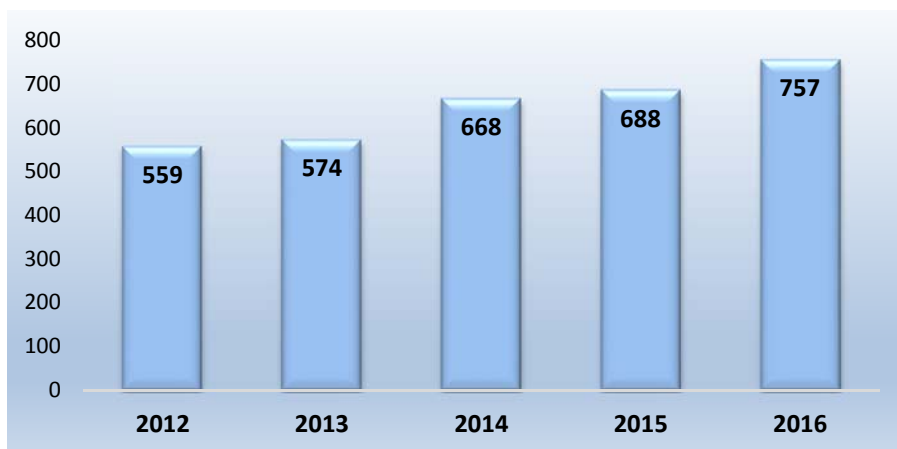
Total Degrees and Awards Conferred



Undergraduate



Graduate



Source: Institutional Effectiveness and Assessment



Student Information





Composition of UWG Student Body Fall 2012-2016

<i>Classification</i>	<i>2012</i>	<i>2013</i>	<i>2014</i>	<i>2015</i>	<i>2016</i>
Freshmen	3,467	3,477	3,439	3,518	3,630
Sophomore	2,162	2,279	2,412	2,535	2,624
Junior	1,915	1,882	2,016	2,098	2,195
Senior	2,243	2,137	2,091	2,112	2,090
Graduate	1,806	1,970	1,957	2,081	2,153
Dual Enroll - MOWR	117	129	196	365	483
Others ¹	59	55	95	125	133
Total Enrollment	11,769	11,929	12,206	12,834	13,308
<i>Gender</i>					
Female	7,376	7,675	7,878	8,325	8,733
Male	4,393	4,254	4,328	4,509	4,575
<i>Race/Ethnicity</i>					
Hispanic or Latino	470	484	506	586	681
Black or African American	3,692	4,002	4,313	4,625	4,898
American Indian or Alaskan Native	26	23	17	19	20
Asian	200	165	199	178	184
Native Hawaiian or Other Pacific Islander	10	12	14	17	17
Caucasian/White	6,755	6,719	6,637	6,829	6,868
Two or more races	372	347	365	363	419
Unknown/not reported	244	177	155	217	221
<i>New Students</i>					
Beginning Freshmen	1,952	2,121	2,091	2,284	2,340
Transfers ²	692	677	686	725	782
Graduate Students	487	489	609	573	507
Dual Enroll - MOWR	85	93	162	296	317
Others ¹	50	36	70	59	59
<i>Attendance Status</i>					
Full-time Undergraduate	8,178	8,369	8,531	8,816	9,084
Full-time Graduate	636	698	621	625	594
Total Full-time	8,814	9,067	9,152	9,441	9,678
Part-time Undergraduate	1,785	1,590	1,718	1,937	2,071
Part-time Graduate	1,170	1,272	1,336	1,456	1,559
Total Part-time	2,955	2,862	3,054	3,393	3,630
<i>Students Receiving Veterans Benefits</i>	<i>420</i>	<i>306</i>	<i>325</i>	<i>306</i>	<i>296</i>

¹ Includes Transients.

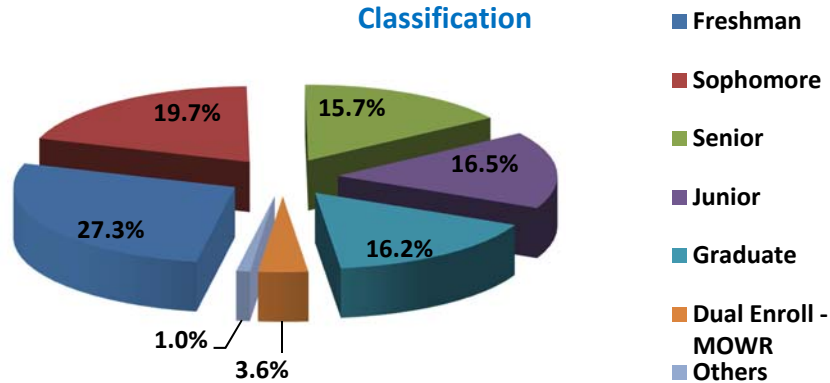
² Includes transfer freshmen, sophomores, juniors, and seniors.

Source: Registrar and Institutional Effectiveness and Assessment

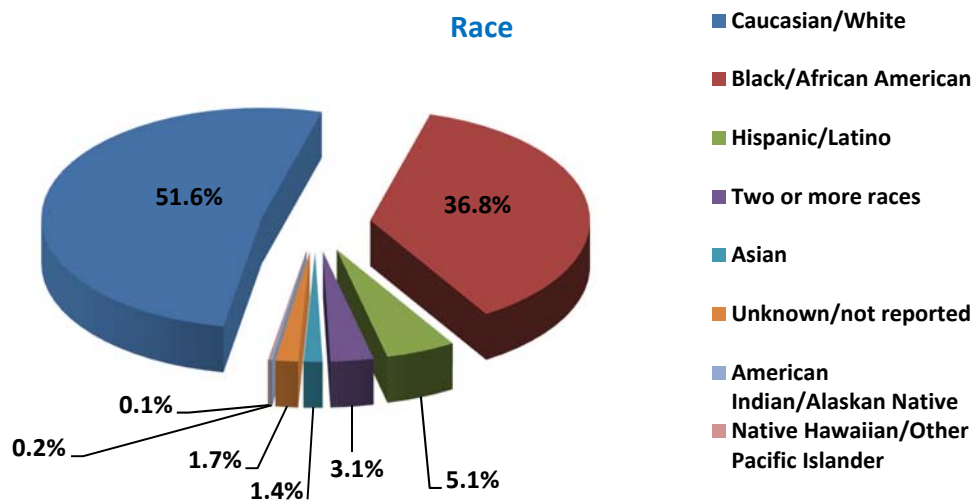


UWG Students At-A-Glance Fall 2016

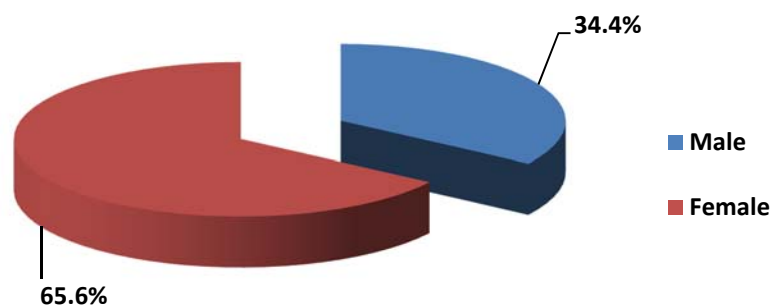
Classification



Race



Gender

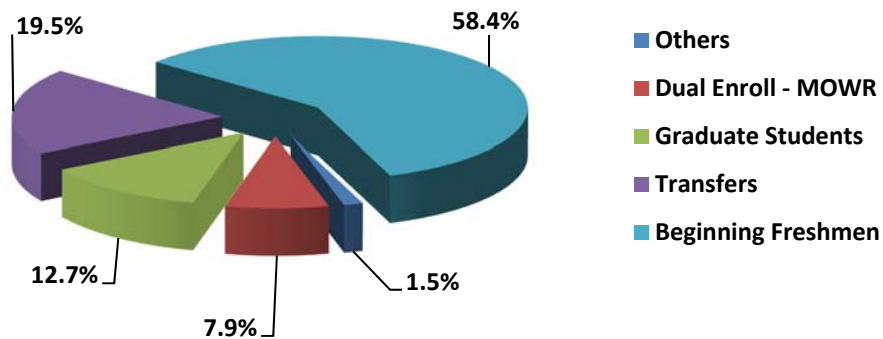


Source: Registrar and Institutional Effectiveness and Assessment

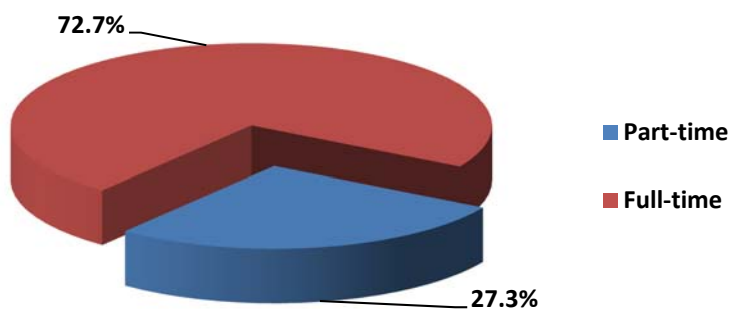


UWG Students At-A-Glance Continued Fall 2016

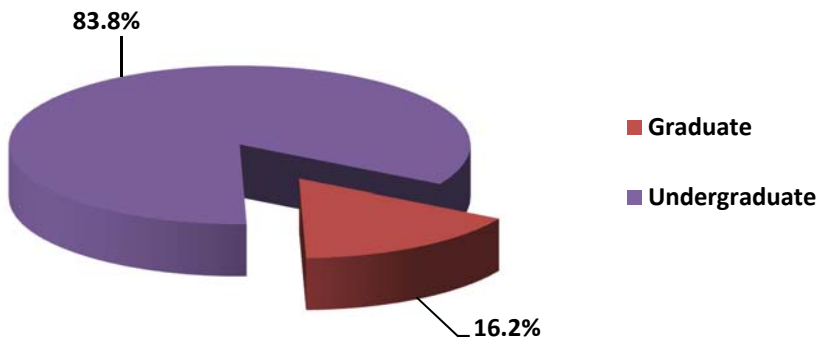
New Students



Attendance



Enrolled



Source: Registrar and Institutional Effectiveness and Assessment



Admissions Fall 2012-2016

<i>All Students Enrolled</i>	<i>2012</i>	<i>2013</i>	<i>2014</i>	<i>2015</i>	<i>2016</i>
Enrolled	11,769	11,929	12,206	12,834	13,308
New Enrolled	3,266	3,416	3,618	3,937	4,005
New Enrolled %	28%	29%	30%	31%	30%
<i>Graduate Students Enrolled</i>					
Enrolled	1,806	1,970	1,957	2,081	2,153
New Enrolled	487	489	609	573	507
New Enrolled %	27%	25%	31%	28%	24%
<i>Undergraduate Students Enrolled</i>					
Enrolled	9,963	9,959	10,249	10,753	11,155
New Enrolled	2,779	2,927	3,009	3,364	3,498
New Enrolled %	28%	29%	29%	31%	31%
<i>All Undergraduates Applicants</i>					
Applicants	8,244	8,832	10,170	9,664	10,025
Accepted	4,732	4,833	5,177	5,562	5,984
Enrolled	3,213	2,804	2,904	3,124	3,207
Accepted %	57%	55%	51%	58%	60%
Accepted and Enrolled (Yield)	68%	58%	56%	56%	54%
<i>New Freshman Student Applicants Accepted and Enrolled</i>					
Applicants	6,435	7,266	7,868	7,878	8,131
Accepted	3,589	3,913	3,825	4,481	4,801
Enrolled	2,070	2,206	2,231	2,410	2,434
Accepted %	56%	54%	49%	57%	59%
Accepted and Enrolled (Yield)	58%	56%	58%	54%	51%
<i>New Transfer Student Applicants Accepted and Enrolled</i>					
Applicants	1,809	1,566	2,302	1,786	1,894
Accepted	1,143	920	1,352	1,081	1,183
Enrolled	638	598	673	714	773
Accepted %	63%	59%	59%	61%	62%
Accepted and Enrolled (Yield)	56%	65%	50%	66%	65%
<i>Mean Scores</i>					
SAT Critical Reading	485	485	484	486	482
SAT Math	477	476	472	470	472
SAT Writing	467	470	463	467	459
ACT Composite	20	20	20	20	20
HSGPA First-time Full-time	3.08	3.11	3.13	3.15	3.15

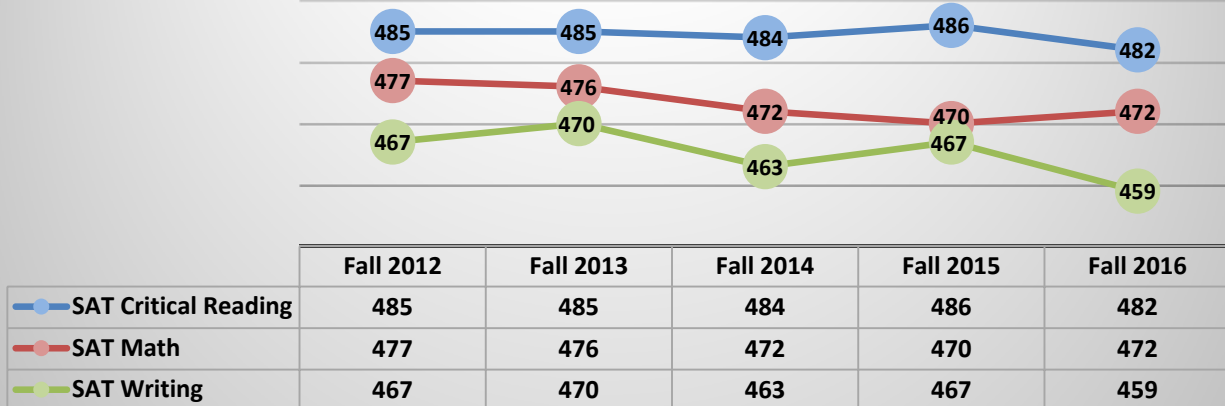
Note: All ACT or SAT scores submitted by first-time, full-time freshmen are used to calculate the mean scores.

High School GPA (HSGPA) – First-time, Full-time

Source: Admissions, Registrar, and Institutional Effectiveness and Assessment



First Time Entering Freshmen Average SAT Scores*

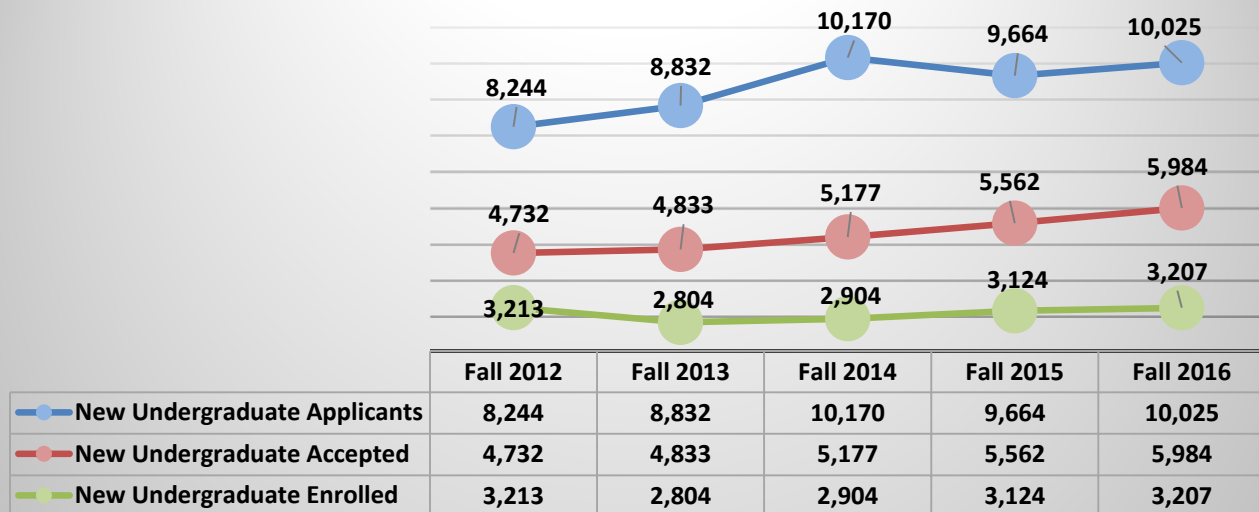


*SAT Scores are from the re-centered scale.

Note: Scores reported are for first-time, full-time freshmen.

Source: Institutional Effectiveness and Assessment

New Undergraduate Applicants



Source: Admissions and Registrar



Geographic Origin by County Fall 2016

<i>Primary Service Area</i>				<i>Primary Service Area</i>			
<i>Counties</i>	<i>Undergraduate</i>	<i>Graduate</i>	<i>Total</i>	<i>Counties</i>	<i>Undergraduate</i>	<i>Graduate</i>	<i>Total</i>
Bartow	93	16	109	Henry	384	57	441
Butts	12	1	13	Lamar	22	4	26
Carroll	1,429	261	1,690	Meriwether	60	11	71
Catoosa	41	9	50	Monroe	16	1	17
Chattooga	25	6	31	Murray	15	6	21
Cherokee	169	33	202	Muscogee	101	12	113
Coweta	1,100	138	1,238	Newton	143	20	163
Dade	4	2	6	Paulding	423	67	490
Dawson	6	2	8	Pickens	7	1	8
Douglas	824	105	929	Pike	22	10	32
Fannin	6	1	7	Polk	112	9	121
Fayette	361	57	418	Rockdale	140	20	160
Floyd	121	51	172	Spalding	53	12	65
Forsyth	107	17	124	Talbot	4	.	4
Gilmer	2	1	3	Troup	207	22	229
Gordon	54	7	61	Upson	32	1	33
Haralson	261	29	290	Walker	57	7	64
Harris	31	4	35	Whitfield	64	8	72
Heard	92	8	100				
				Total	6,600	1,016	7,616

<i>Five Metro Area</i>			
<i>Counties</i>	<i>Undergraduate</i>	<i>Graduate</i>	<i>Total</i>
Clayton	319	48	367
Cobb	683	183	866
Dekalb	616	106	722
Fulton	628	170	798
Gwinnett	680	120	800
Total	2,926	627	3,553

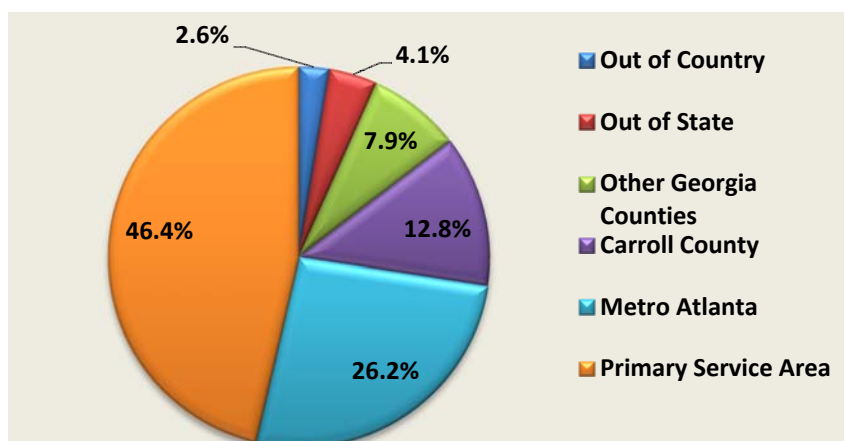
	<i>Undergraduate</i>	<i>Graduate</i>	<i>Total</i>
<i>Other Georgia</i>			
<i>Counties</i>	885	225	1,110
<i>Out of Country</i>	289	54	343
<i>Out of State</i>	455	231	686
Total	1,629	510	2,139

Source: Institutional Effectiveness and Assessment

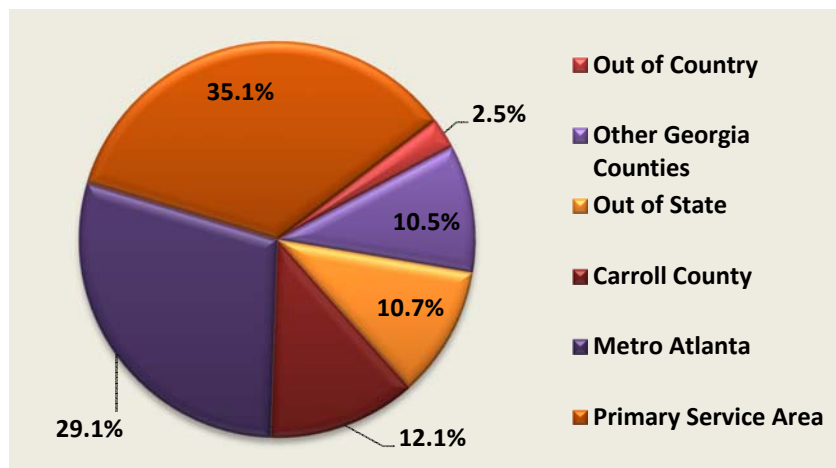


Geographic Origin

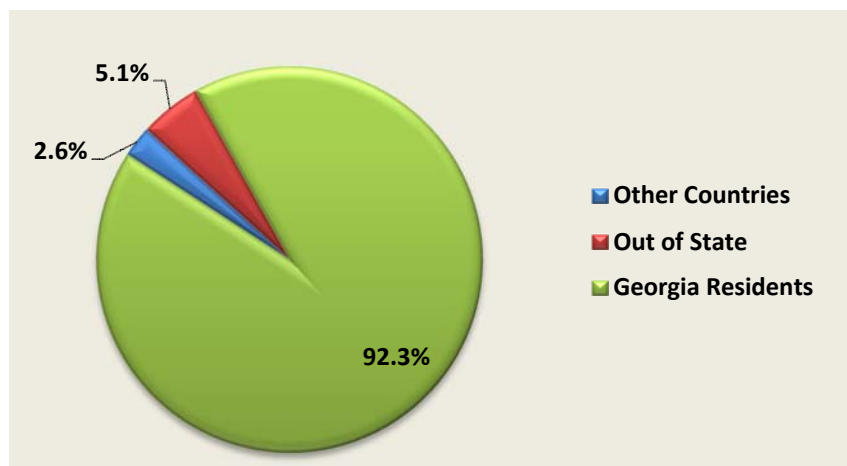
Undergraduates



Graduates



All Students





Geographic Origin by State or Territory Fall 2016

<i>State or Territory</i>	<i>Undergraduate</i>	<i>Graduate</i>	<i>Total</i>	<i>State or Territory</i>	<i>Undergraduate</i>	<i>Graduate</i>	<i>Total</i>
Alabama	72	51	123	Mississippi	9	5	14
Alaska	.	1	1	Missouri	1	4	5
Arizona	.	3	3	Montana	1	.	1
Arkansas	.	2	2	Nebraska	.	2	2
California	10	11	21	New Hampshire	1	.	1
Colorado	3	.	3	New Jersey	5	3	8
Connecticut	1	3	4	New York	9	5	14
Delaware	1	.	1	North Carolina	4	8	12
Florida	15	18	33	Ohio	8	3	11
Georgia	10,411	1,867	12,278	Oklahoma	.	2	2
Hawaii	2	1	3	Oregon	.	1	1
Illinois	5	10	15	Pennsylvania	3	4	7
Indiana	1	3	4	Puerto Rico*	1	.	1
Iowa	.	2	2	South Carolina	4	13	17
Kansas	.	2	2	South Dakota	.	1	1
Kentucky	1	4	5	Tennessee	7	16	23
Louisiana	3	4	7	Texas	3	11	14
Maine	.	2	2	Utah	.	2	2
Maryland	3	5	8	Virginia	4	7	11
Massachusetts	.	9	9	Washington	1	.	1
Michigan	3	1	4	West Virginia	1	.	1
Minnesota	1	.	1	Wisconsin	1	4	5
				Total	10,595	2,090	12,685

<i>Other</i>			
	<i>Undergraduate</i>	<i>Graduate</i>	<i>Total</i>
State Not Specified	265	8	273
Out of Country	294	54	348
Overseas Military	1	1	2
Total	560	63	623

*US Territory

Source: Institutional Effectiveness and Assessment



Geographic Origin by Country Fall 2016

Country	Undergraduate	Graduate	Total	Country	Undergraduate	Graduate	Total
Afghanistan	.	1	1	Italy	1	.	1
Australia	1	.	1	Jamaica	22	2	24
Bahamas	1	.	1	Jersey	1	.	1
Bangladesh	1	.	1	Kenya	9	1	10
Barbados	1	.	1	Kiribati	1	.	1
Bassas Da India	.	1	1	Korea, Republic of	6	.	6
Brazil	1	3	4	Liberia	2	.	2
Burundi	1	.	1	Macedonia	1	.	1
Cameroon	8	1	9	Mexico	12	2	14
Canada	10	7	17	Namibia	1	.	1
Central African Republic	1	.	1	Nepal	1	1	2
Chad	1	.	1	New Zealand	1	.	1
Chile	2	.	2	Niger	14	2	16
China	41	.	41	Nigeria	22	1	23
Columbia	2	.	2	Norway	1	.	1
Comoros	1	2	3	Pakistan	2	.	2
Congo	1	.	1	Peru	1	.	1
Cook Islands	1	.	1	Philippines	1	.	1
Cuba	2	.	2	Poland	2	.	2
Denmark	1	.	1	Russia	3	.	3
East Timor	1	.	1	Saint Vincent/Grenadines	1	.	1
Ecuador	2	.	2	Sierra Leone	1	.	1
Egypt	.	1	1	South Africa	1	.	1
El Salvador	5	.	5	Spain	4	.	4
Estonia	.	1	1	Sri Lanka	3	.	3
Ethiopia	5	.	5	Sudan	.	1	1
Finland	1	.	1	Taiwan	1	.	1
France	5	3	8	Tanzania	.	1	1
Gabon	2	4	6	Trinidad and Tobago	2	.	2
Gambia	2	.	2	Turkey	.	2	2
Germany	13	1	14	Ukraine	1	.	1
Ghana	20	3	23	United Kingdom	11	.	11
Guinea	1	.	1	United States of America	10,868	2,099	12,967
Haiti	7	1	8	Uruguay	1	.	1
Honduras	2	1	3	Venezuela	1	.	1
India	9	7	16	Vietnam	3	1	4
Iran	.	2	2	Zambia	2	.	2
Israel	1	.	1	Zimbabwe	.	1	1
Total					11,155	2,153	13,308

Source: Institutional Effectiveness and Assessment



Students' Geographic Origin Fall 2016

Undergraduates		Graduates	
Top Five Counties			
1 Coweta	1,100	1 Cobb	183
2 Douglas	824	2 Fulton	170
3 Cobb	683	3 Coweta	138
4 Gwinnett	680	4 Gwinnett	120
5 Fulton	628	5 Dekalb	106
Excluding Carroll County			
Top Five States			
1 Alabama	72	1 Alabama	51
2 Florida	15	2 Florida	18
3 California	10	3 Tennessee	16
4 New York	9	4 South Carolina	13
5 Mississippi	9	5 California and Texas	11
Excluding Georgia			
Top Five Countries			
1 China	41	1 India	7
2 Nigeria	22	2 Canada	7
3 Jamaica	22	3 Gabon	4
4 Ghana	20	4 Brazil	3
5 Niger	14	5 Ghana and France	3
Excluding USA			

Source: Institutional Effectiveness and Assessment



Fall Retention and Graduation Rates First-Time Full-Time Freshman Students*

ENTERING COHORTS FROM FALL 10 FORWARD HAVE BEEN REVISED TO EXACTLY REFLECT USG PUBLISHED COHORTS

		Entered									
		Fall 2006	Fall 2007	Fall 2008	Fall 2009	Fall 2010	Fall 2011	Fall 2012	Fall 2013	Fall 2014	Fall 2015
First Year	N=	1,700	1,793	2,007	1,909	1,844	1,924	2,012	2,198	2,167	2,343
Second Year	Fall	1,238	1,345	1,471	1,397	1,359	1,367	1,444	1,629	1,572	1,695
		72.82%	75.01%	73.29%	73.18%	73.70%	71.05%	71.77%	74.11%	72.54%	72.34%
Third Year	Fall	917	1,022	1,126	1,100	1,062	1,078	1,147	1,300	1,255	
		53.94%	57.00%	56.10%	57.62%	57.59%	56.03%	57.01%	59.14%	57.91%	
Fourth Year	Fall	808	932	1,014	924	893	955	1,004	1,138		
		47.53%	51.98%	50.52%	48.40%	48.43%	49.64%	49.90%	51.77%		
Fifth Year	Fall	489	587	651	572	560	599	570			
		28.76%	32.74%	32.44%	29.96%	30.37%	31.13%	28.33%			
Sixth Year	Fall	201	209	240	219	227	222				
		11.82%	11.66%	11.96%	11.47%	12.31%	11.54%				
Graduation	N=	248	298	316	298	309	293	392			
Rate	4 yr	14.59%	16.62%	15.74%	15.61%	16.76%	15.23%	19.48%			
	N=	533	641	687	628	624	649				
	5 yr	31.35%	35.75%	34.23%	32.90%	33.84%	33.73%				
	N=	618	761	814	744	760					
	6 yr	36.35%	42.44%	40.56%	38.97%	41.21%					

Note: Graduation Rates updated end of summer 2016 and Retention Rates census date fall 2016. Data reported may differ from data reported to federal, state, and regional agencies because of different guidelines, definitions, and time prepared.

*Each entering cohort includes all entering freshmen enrolled full-time whose first-term is the fall indicated or the previous summer as per IPEDS guidelines.

Source: *Institutional Effectiveness and Assessment*





Continuing Education

The Department of Continuing Education supports the cultural, economic, and educational development in the west Georgia region by offering noncredit courses and programs.

Continuing Education Programs Fiscal Years 2012 - 2016

<i>Fiscal Year</i>	<i>Programs</i>	<i>Participants</i>	<i>CEUs</i>
2012	189	1,834	2,209
2013	192	1,456	2,596
2014	173	1,313	2,965
2015	186	1,600	4,272
2016	245	1,879	4,469

Source: Continuing Education

Off Campus Instructional Site Profile

Summer 2016

Instructional Sites	No. of Courses	No. of Students*	Credit Hours		Total
			Undergraduate	Graduate	
Atlanta Area	3	8	2	21	23
Middle Georgia	2	20	96	0	96
Newnan	29	351	1,223	270	1,493

Fall 2016

Instructional Sites	No. of Courses	No. of Students*	Credit Hours		Total
			Undergraduate	Graduate	
Atlanta Area	4	41	1	132	133
Middle Georgia	3	26	36	80	116
Newnan	66	743	4,523	378	4,901

Spring 2017

Instructional Sites	No. of Courses	No. of Students*	Credit Hours		Total
			Undergraduate	Graduate	
Atlanta Area	6	50	3	156	159
Middle Georgia	1	24	144	0	144
Newnan	66	802	3,777	480	4,257

* Unduplicated Headcount

Note: Distance courses (N) taught 95 percent or more online are not included.

Source: Off-Campus Course Report



Extended Learning **Headcount and Credit Hours Enrolled in** **Online Courses by Delivery Method** **Fall 2012-2016**

Method	Fall 2012		Fall 2013		Fall 2014	
	Head Count*	Credit Hours	Head Count*	Credit Hours	Head Count*	Credit Hours
eCore	674	3,053	625	2,800	807	3,846
51-94% Distance	1,605	5,734	1,652	6,490	1,814	7,502
95% or more Distance	3,895	17,669	4,133	19,693	4,617	22,530
Unduplicated - All Methods	5,384	26,456	5,615	28,983	6,213	33,878

Beginning spring 2015 the Board of Regents introduced new Instructional Method Codes

Method	Fall 2015		Fall 2016	
	Head Count*	Credit Hours	Head Count*	Credit Hours
eCore	1,073	5,292	1,283	6,234
51-94% Distance	1,629	6,190	2,046	7,136
95% or more Distance	1,189	3,726	1,114	3,346
100% Online	4,733	22,818	5,332	26,791
Unduplicated - All Methods	6,655	38,026	7,559	43,507

*Unduplicated Count

Note: e-Core means electronic core curriculum courses which enable the University of West Georgia students to complete the first two years of their college courses entirely online, except to occasional proctored exams.

Source: *Institutional Effectiveness and Assessment*





Georgia Alumni by County December 2016

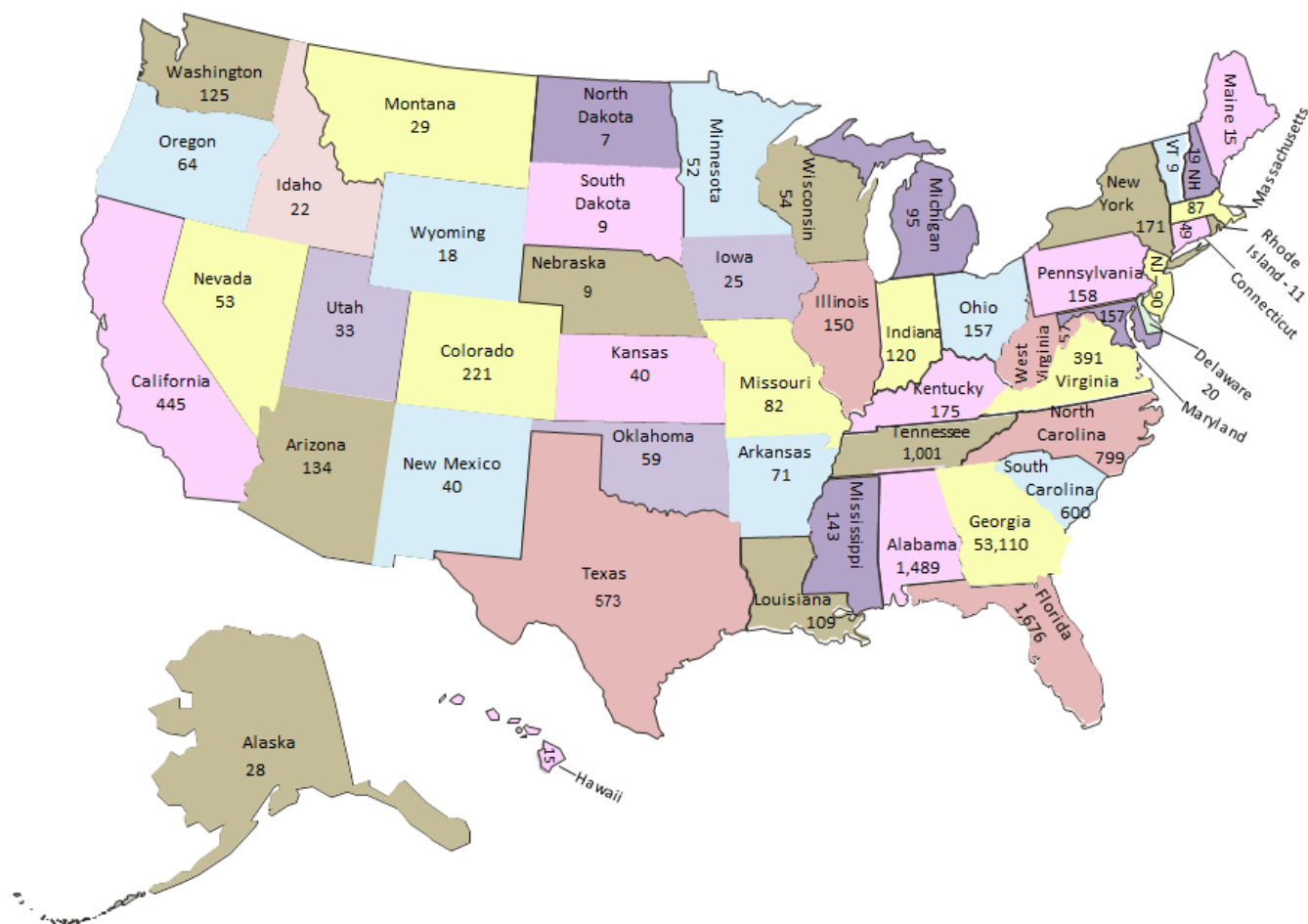
County	No.	County	No.	County	No.	County	No.
Appling	7	Dade	57	Jefferson	11	Randolph	9
Atkinson	3	Dawson	65	Jenkins	3	Richmond	104
Bacon	12	Decatur	19	Johnson	4	Rockdale	412
Baker	1	Dekalb	2,379	Jones	37	San Diego	1
Baldwin	33	Dodge	12	Lamar	121	Screven	6
Banks	31	Dooley	6	Lanier	2	Seminole	8
Barrow	177	Dorchester	1	Laurens	27	Spalding	476
Bartow	849	Dougherty	54	Lee	35	Stephens	31
Ben Hill	10	Douglas	2,900	Liberty	18	Stewart	4
Berrien	5	Early	6	Limestone	1	Sumter	32
Bibb	191	Effingham	29	Lincoln	7	Talbot	20
Bleckley	10	Elbert	34	Long	2	Taliaferro	1
Brantley	2	Emanuel	10	Lowndes	53	Tattnall	5
Brooks	7	Evans	5	Lumpkin	63	Taylor	8
Bryan	22	Fairfax	1	Macon	5	Telfair	3
Bulloch	36	Fannin	112	Madison	35	Terrell	3
Burke	15	Fayette	1,903	Maricopa	2	Thomas	45
Butts	120	Floyd	1,364	Marion	7	Tift	32
Calhoun	3	Forsyth	726	McDuffie	20	Toombs	24
Camden	31	Franklin	31	McIntosh	18	Towns	40
Candler	5	Fulton	3,174	Meriwether	199	Treutlen	4
Carroll	7,441	Gilmer	139	Miller	8	Troup	737
Cass	1	Glascok	1	Mitchell	9	Turner	6
Catoosa	487	Glynn	137	Mobile	1	Twiggs	3
Charleston	1	Grady	15	Monroe	65	Union	65
Charlton	2	Grand	1	Montgomery	7	Upson	173
Chatham	190	Greene	56	Morgan	87	Walker	452
Chattooga	209	Gwinnett	2,504	Murray	342	Walton	322
Cherokee	1,186	Habersham	87	Muscogee	267	Ware	26
Clarke	216	Hall	467	Newton	406	Warren	6
Clay	3	Hancock	5	Oconee	125	Washington	14
Clayton	893	Haralson	1,284	Oglethorpe	26	Wayne	15
Cleburne	2	Harris	134	Orange	1	Webster	4
Clinch	2	Hart	55	Paulding	1,858	Wheeler	1
Cobb	4,349	Hartford	1	Peach	20	White	61
Coffee	14	Heard	332	Pickens	169	Whitfield	1,019
Colquitt	21	Henry	1,205	Pierce	17	Wilcox	1
Columbia	100	Hillsborough	1	Pike	187	Wilkes	18
Cook	11	Houston	168	Polk	889	Wilkinson	7
Coweta	3,609	Irwin	8	Pulaski	3	Worth	10
Crawford	7	Jackson	136	Putnam	51		
Crisp	14	Jasper	49	Quitman	2		
Cuyahoga	1	Jeff Davis	4	Rabun	49		
Total		49,473					

Note: Lost and/or deceased are 2,854

Source: Development and Alumni Relations



Alumni in the United States December 2016



63,066 Total Alumni

The UWG Alumni Association embodies the spirit of the University of West Georgia by serving the institution's largest single constituency – more than 60,000 graduates. Founded in June 1934, the Association is led by a committed 36- member Board of Directors and the Alumni Relations professional staff. Our focus is on fostering vibrant and creative engagement opportunities with graduates and former students and gaining their financial support to ensure that UWG students have every opportunity for success.

The Association's magazine – Perspective – is published twice a year and mailed primarily to Annual Fund donors. There is also an online version available at <http://uwgperspective.com/>. Signature events sponsored by the Association include Wolves Capture the Square and Homecoming during football season, Alumni Weekend in the spring, and 30 Under 30, a young alumni recognition program. Each involve reunions and affinity group gatherings. Alumni Weekend is also when the Association presents coveted awards that acknowledge and celebrate career achievement, service to humanity, and loyalty to the University of West Georgia, and the Annual Meeting of the Association. To learn more about the UWG Alumni Association, visit us from the university homepage: alumni.westga.edu.

Note: 2,755 lost, deceased, or in foreign countries

Source: *Development and Alumni Relations*



Student Services





Irvine Sullivan Ingram Library

Ingram Library provides online and in-house collections and services to meet curricular needs. Information about library materials is available through the online GIL catalog. University System of Georgia resources, including materials held by other libraries, may be requested by West Georgia students, faculty, and staff through GIL Express. Library users have access to Georgia Library Learning Online (GALILEO), an online library of databases, full-text electronic journals, and reference resources available to all Georgians, as well as to a range of electronic materials selected to support the university's academic programs. A repository for federal documents, the library houses a collection of United States government publications and provides access to government information online and in other electronic formats. The University is a member of the Atlanta Regional Council for Higher Education (ARCHE), which allows students, faculty, and staff to utilize the resources of member libraries. Fax and courier services to off campus instructional sites and arrangements with libraries in Newnan and other locations support students off campus, supplementing online materials and services. The library offers a for-credit course, LIBR 1101, which is designed to support students and guide them to become information literate. The course is offered both face to face and online and is part of Area B of the core curriculum.

The Annie Belle Weaver Special Collections provide the history of the University and the geographic area it serves. Photographs, family histories, and other materials associated with the West Georgia region are included in Special Collections, as are materials on sacred harp music, American psalmody, humanistic psychology, and psychic phenomena. Special Collections houses a number of collections of papers of Georgia political figures, such as the Murphy Collection and the papers of several members of Congress, including former Congressman Bob Barr, the 2008 Libertarian Party candidate for president. Ingram Library is a member of the Association of Centers for the Study of Congress.

Acquisitions and Services

Holdings	2012	2013	2014	2015	2016
Volumes added during the year	3,253	2,928	2,918	1,518	1,132
Year-end Volumes	456,034	435,334	407,055	408,573	409,628
Year-end Microfilm Reels	21,052	21,052	22,638	22,699	22,823
Physical units of other microtext at end of year	150,457	176,565	536,640	536,431	536,438
Periodical titles received at end of year	897	628	431	434	421
Electronic Periodical Titles	76,037	87,845	87,845	91,710	87,682
Items					
U.S. Documents	64,890*	66,207	67,425	50,248	50,987
U.S. Documents (Volumes on Microfiche)	20,053	5,223	4,652	4,642	4,644
Collection					
Supplies and Books Expenditures	\$413,833	\$458,444	\$ 261,132	\$ 125,489	\$ 73,204
Periodicals Expenditures	\$300,809	\$168,253	\$ 177,000	\$ 177,873	\$ 188,240
Audio Visual Expenditures	\$ 2,856	\$ 4,265	\$ 658,348	-	
Databases Expenditures				\$ 585,718	\$ 725,000
Circulation	37,301	38,078	49,135	71,062	59,932
Interlibrary Loans					
Borrowed	2,075	2,679	3,002	2,787	4,949
Loaned	4,313	5,992	3,607	2,105	1,193
Full text retrievals from electronic databases	451,062	348,454	22,390,077	25,640,209	22,217,433
LIBR 1101 Credit Hours	1,216	1,382	1,224	1,210	1,028
Reference Questions	11,196	6,257	7,071	16,018	5,493

Source: Irvine Sullivan Ingram Library



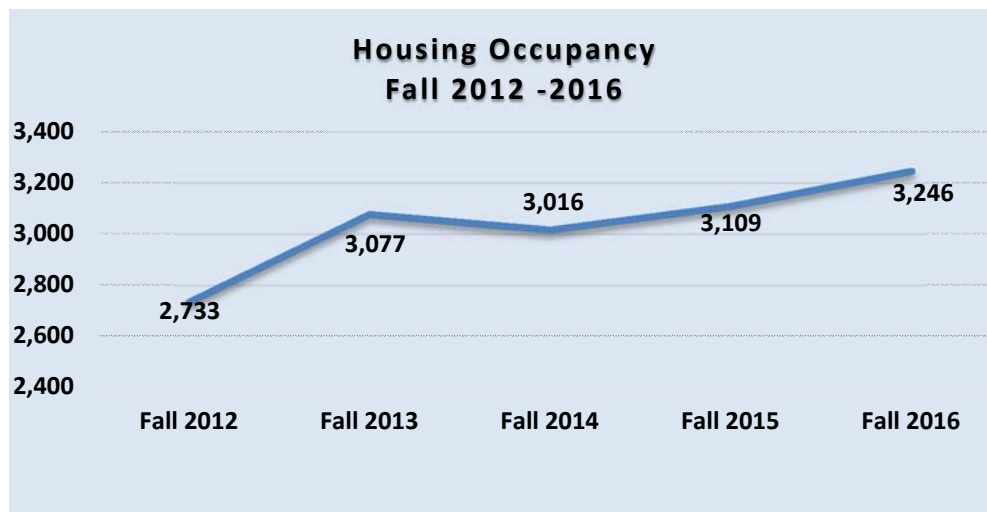
Housing and Residence Life

Housing and Residence Life (HRL) provides a living/learning community environment for residential students. More than 3,200 students are housed in seven residence halls and the Greek Village Complex. On campus living provides students with the convenience of being close to campus life and its activities in comfortable and attractive surroundings, which fosters the development of disciplined minds, social conscientiousness and responsibility.

Student Housing Occupancy

<i>Residence Hall</i>	<i>Type</i>	<i>Fall 2015</i>	<i>Fall 2016</i>
Arbor View	Co-ed	574	586
Bowdon	Co-ed	275	280
Center Pointe Suites	Co-ed	587	603
Gunn	Co-ed	106	129
Strozier Complex	Co-ed	130	165
Tyus	Co-ed	149	191
University Suites	Co-ed	582	580
Greek Village		238	240
The Oaks	Co-ed	468	472
By Level			
Academy		41	14
Freshman		2,125	1,862
Sophomore		596	822
Junior		216	352
Senior		123	187
Graduate		8	9
Total		3,109	3,246

Source: Student Affairs and Enrollment Management





Advising Center

The Advising Center supports students in their path to graduation by delivering information about advising and registration, providing appropriate course recommendations to keep students on track, and teaching students to use the tools for self-advisement offered by the University of West Georgia. In fall 2016, 3,551 undergraduate students were assigned to work with the professional advisors in the Advising Center, which resulted in a total of 5,896 advising sessions.

Career Services

Career Services provides a comprehensive career employment development program for students and alumni. Services offered include job search support, career coaching, resume preparation, and career-related learning experiences through professional practice programs. During 2015-2016, 1,732 students were employed on campus and 250 of those students were employed through the Federal Work Study (FWS) program. Career services also connected 1,136 students with potential employers through numerous avenues, including career fairs and events.

Center for Academic Success

The Center for Academic Success (CAS) provides academic and social support services to students in tutoring for core curriculum courses, study skills training, peer mentoring, first year student advocacy, student leadership development, and at-risk and probation student advisement. From 2015 to 2016, Supplemental Instruction (SI) offered 110 course section tutorials; 35% of enrolled students chose to utilize SI. During the same period, CAS also had 4,436 individual tutoring appointments by 1,123 students.

Center for Adult Learners and Veterans

The Center for Adult Learners and Veterans (CALV) supports retention, progression, and graduation of adult learners (25 and older), and veterans and their families through services and programs. The Center provides resources to aid in the advancement of the students, including a study and lounge space, access to technological resources, and knowledgeable staff to assist in negotiating services, resources, and benefits. In fall 2016, 296 veterans and family members utilized benefits related to the GI Bill, and 1,120 adult undergraduate learners were enrolled at UWG.

Center for Student Involvement

The Center for Student Involvement (CSI) facilitates student engagement, leadership, and involvement through a variety of programs and services to enhance the student experience. In 2016, 150 student organizations were registered, including 26 social sororities and fraternities. Additionally, CSI continued to increase coordination of awareness and access to volunteer opportunities for students. Students logged approximately 4,400 hours of volunteering and 306 students participated in the Big Event in 2016.

Counseling Center

The Counseling Center provides psychological counseling and support services to currently enrolled students. In addition, it offers confidential and free of charge outreach/psychoeducation, consultation, and crisis intervention to the University community. The Center has space where students can identify and foster personal and external resources to help them achieve academic, social, and emotional success. Accessibility Services is also housed in the Center that provides documented disability advocacy with support services. In the 2016 academic year, the Counseling Center held over 10,000 counseling sessions and accessibility services for 416 students.

Enrollment Services Center

The Enrollment Services Center (ESC) is the front office for the registrar and financial aid services, assisting with applications for graduation, transcript requests, general financial aid questions, and completing FAFSA and other forms. In calendar year 2016, the Center answered 134,763 of the 200,741 calls received. During fall 2016, the Center received approximately 71,770 calls and assisted 48,681 callers who requested information or needed assistance.



Financial Aid

Financial Aid assists students with financing their educational expenses through federal, state, and institutional loans, grants, scholarships and work programs. Financial Aid works with numerous offices and organizations external to the institution, such as need analysis services, financial institutions, and state and governmental agencies or their contractors. In fall 2016, 86% of all undergraduates received some type of financial aid.

Health Services

Health Services provides diagnosis, first aid, and treatment of minor or short-term acute illnesses or injuries under the supervision of a physician in addition to leading health and wellness education efforts across the institution. Both clinical and educational efforts are directed toward the enhancement of each student's campus life in order to achieve academic success and advance personal development. During the academic year 2015-2016, there were 12,480 patient visits to Health Services, 268 classes taught on subjects ranging from alcohol and drugs to wellness and sexual health for a total of 10,272 participants, as well as roughly 14,115 visits to online resources (Student Health 101 website).

International Student Admissions and Programs

New this year, the International Student Admissions and Programs Office (ISAP) works with international students from prospective applicants to alumni. ISAP offers immigration support services and on-campus activities for international students to help acclimate them to an American university setting. Fall 2016, 83 new international students from 21 countries arrived on campus resulting in a total international population of 153 for the 2016-2017 academic year.

New Student Programs

New Student Programs (NSP) helps incoming students in meeting new expectations, becoming involved on campus, and getting connected to the new environment as they transition into college life. NSP provides orientation to entering freshmen and transfer students, UWG1101, living and learning communities, commuter services, and programs for parents. In fall 2016, 3,275 students attended orientation programs and 2,367 incoming freshmen participated in at least one first year program.

University Recreation

University Recreation (URec) provides comprehensive, high-quality, student-focused programs, facilities, and services that create community, connectivity, and develop exceptional leaders who value and embody healthy lifestyles. The department manages fitness and wellness programs, intramural sports, club sports, outdoor recreation, and Campus Center operations, which include the fitness center, climbing wall, basketball courts, training area, indoor track, and events within the building. In academic year 2015-2016, programs and services were utilized more than 183,000 times and student organizations reserved the Campus Center more than 630 times.

Source: Student Affairs and Enrollment Management





Employee Information





University of West Georgia Fall 2016 Faculty Total

		Teaching Faculty		Administrators		Librarians	Total	Percent
		Full time	Part time	General ¹	Academic ²			
Rank								
	Professor	85		4	34	1	124	19.3%
	Associate Professor	87		3	25	5	120	18.6%
	Assistant Professor	122			8	8	138	21.4%
	Instructor	76	124		1		201	31.2%
	Lecturer	58			3		61	9.5%
College/Other								
	College of Arts and Humanities	123	32	3	17		175	27.2%
	College of Education	79	32	2	14		127	19.7%
	College of Science and Mathematics	84	16		11		111	17.2%
	College of Social Sciences	71	14	2	12		99	15.4%
	Richards College of Business	49	9		7		65	10.1%
	Tanner Health System School of Nursing	22	19		8		49	7.6%
	Library		2		2	14	18	2.8%
Highest Degree Earned								
	Doctorate	300	28	7	59	1	395	61.4%
	Masters or EDS	128	81		12	13	234	36.3%
	Professional Bachelor		15				15	2.3%
Tenure Status								
	Tenured	171		7	58	7	243	37.7%
	Tenure track	106			7	7	120	18.7%
	Non-tenure track	151	124		6		281	43.6%
Ethnicity								
	Black or African American	26	15		6		47	7.3%
	American Indian or Alaskan Native	1					1	0.2%
	Asian	44			3		47	7.3%
	Native Hawaiian/Other Pacific Islander							0.0%
	Hispanic or Latino	14	1		2		17	2.6%
	Two or more races	1					1	0.2%
	Caucasian/White	340	106	7	60	12	525	81.5%
	Unknown/Not reported	2	2			2	6	0.9%
Gender								
	Female	246	79	5	32	12	374	58.1%
	Male	182	45	2	39	2	270	41.9%
Total Faculty		428	124	7	71	14	644	100.0%

¹General Administrators include the Provost and Vice President for Academic Affairs, Interim Provost and Vice President for Academic Affairs, Interim Associate Vice President for Academic Affairs, Associate Vice President for Academic Initiatives and Faculty Development, Associate Vice President and Dean of Graduate School, Associate Vice President of Institutional Effectiveness and Assessment and Director of International Services and Programs.

²Academic Administrators include Deans, Associate Deans, Department Chairs, and Academic Directors.

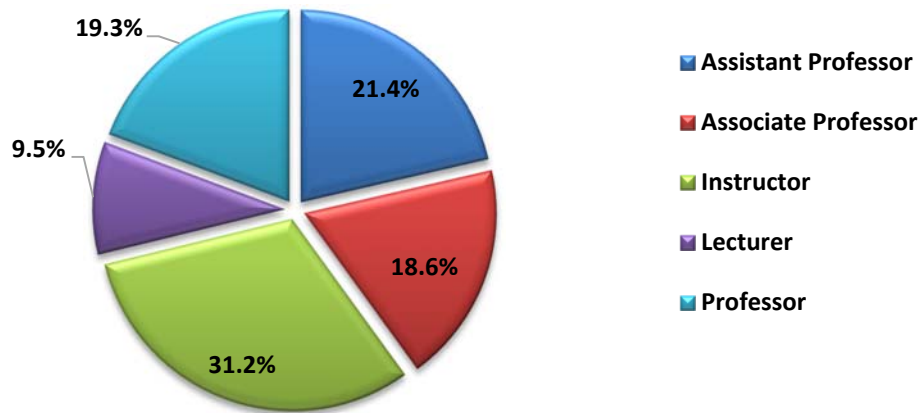
Note: The full time faculty category includes limited term faculty, but does not include graduate teaching assistants and 12 month teaching staff.

Source: Academic Affairs

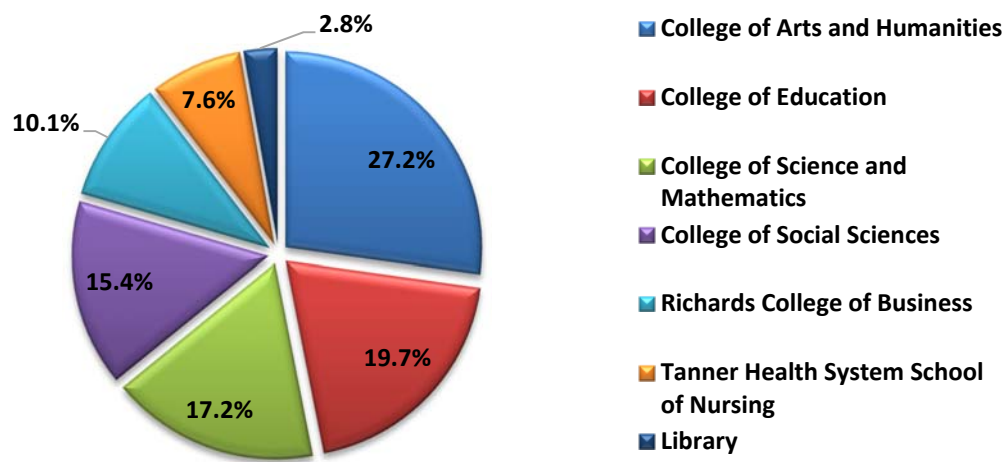


Fall 2016 Faculty

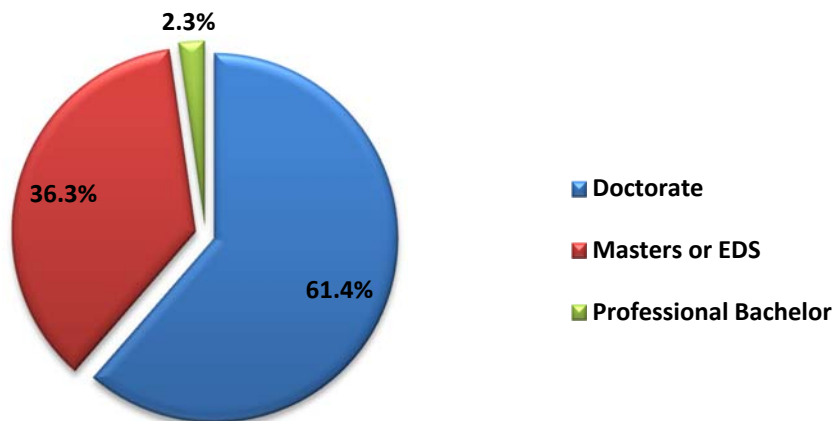
Rank



College/Other



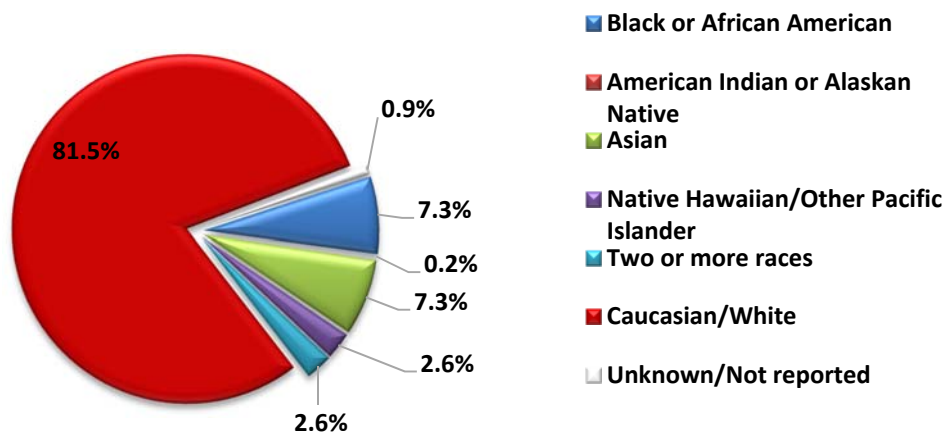
Highest Degree Earned



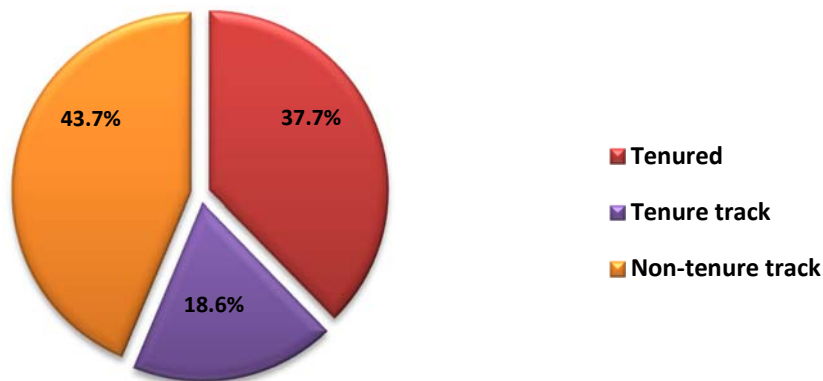


Fall 2016 Faculty

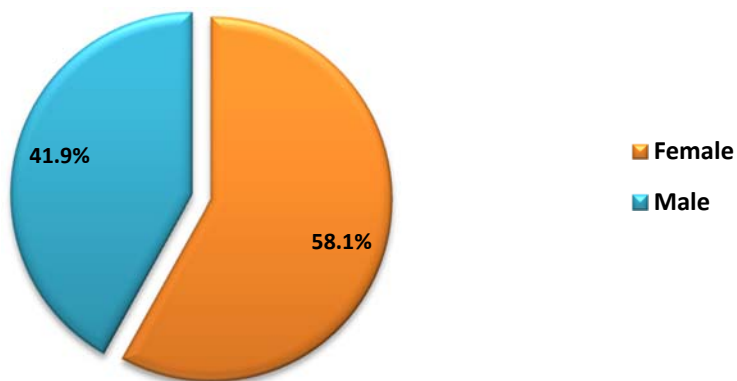
Ethnicity



Tenure Status



Gender





College of Arts and Humanities Fall 2016 Faculty Profile

		Teaching Faculty		Administrators		Total	Percent
		Full time	Part time	General ¹	Academic ²		
Rank							
	Professor	23		3	8	34	19.4%
	Associate Professor	19			8	27	15.4%
	Assistant Professor	21				21	12.0%
	Instructor	40	32			72	41.2%
	Lecturer	20			1	21	12.0%
Highest Degree Earned							
	Doctorate	66	6	3	13	88	50.3%
	Masters or EDS	57	22		4	83	47.4%
	Professional Bachelor		4			4	2.3%
Tenure Status							
	Tenure	42		3	16	61	34.9%
	Tenure track	21				21	12.0%
	Non-tenure track	60	32		1	93	53.1%
Ethnicity							
	Black or African American	5	1			6	3.4%
	American Indian or Alaskan Native						0.0%
	Asian	1				1	0.6%
	Native Hawaiian/Other Pacific Islander						0.0%
	Hispanic or Latino	6	1			7	4.0%
	Two or more races						0.0%
	Caucasian/White	110	30	3	17	160	91.4%
	Unknown/Not reported	1				1	0.6%
Gender							
	Female	77	19	2	6	104	59.4%
	Male	46	13	1	11	71	40.6%
Total Faculty		123	32	3	17	175	100.0%

¹General Administrators include the Provost and Vice President for Academic Affairs, Associate Vice President and Dean of Graduate School, and Director of International Services and Programs.

²Academic Administrators include Deans, Associate Deans, Department Chairs, and Academic Directors.

Source: *Academic Affairs*



College of Education Fall 2016 Faculty Profile

		Teaching Faculty		Administrators		Total	Percent
		Full time	Part time	General ¹	Academic ²		
Rank							
	Professor	10			2	12	9.4%
	Associate Professor	16		2	8	26	20.5%
	Assistant Professor	36			3	39	30.7%
	Instructor	13	32		1	46	36.2%
	Lecturer	4				4	3.2%
Highest Degree Earned							
	Doctorate	62	11	2	13	88	69.3%
	Masters or EDS	17	20		1	38	29.9%
	Professional Bachelor		1			1	0.8%
Tenure Status							
	Tenured	26		2	10	38	29.9%
	Tenure track	31			3	34	26.8%
	Non-tenure track	22	32		1	55	43.3%
Ethnicity							
	Black or African American	8	2		2	12	9.4%
	American Indian or Alaskan Native	1				1	0.8%
	Asian	6				6	4.7%
	Native Hawaiian/Other Pacific Islander						0.0%
	Hispanic or Latino	2				2	1.6%
	Two or more races						0.0%
	Caucasian/White	62	30	2	12	106	83.5%
	Unknown/Not reported						0.0%
Gender							
	Female	62	26	2	7	97	76.4%
	Male	17	6		7	30	23.6%
Total Faculty		79	32	2	14	127	100.0%

¹General Administrators include the Interim Provost and Vice President for Academic Affairs and Associate Vice President for Academic initiatives and Faculty Development .

²Academic Administrators include Deans, Associate Deans, Department Chairs, and Academic Directors.

Source: Academic Affairs



College of Science and Mathematics Fall 2016 Faculty Profile

		Teaching Faculty		Administrators	Total	Percent
		Full time	Part time	Academic ¹		
Rank						
	Professor	20		8	28	25.3%
	Associate Professor	26		3	29	26.1%
	Assistant Professor	17			17	15.3%
	Instructor	13	16		29	26.1%
	Lecturer	8			8	7.2%
Highest Degree Earned						
	Doctorate	70	4	11	85	76.6%
	Masters or EDS	14	12		26	23.4%
	Professional Bachelor					0.0%
Tenure Status						
	Tenured	47		11	58	52.3%
	Tenure track	16			16	14.4%
	Non-tenure track	21	16		37	33.3%
Ethnicity						
	Black or African American	1	1	1	3	2.7%
	American Indian or Alaskan Native					0.0%
	Asian	22		2	24	21.6%
	Native Hawaiian/Other Pacific Islander					0.0%
	Hispanic or Latino	1			1	0.9%
	Two or more races					0.0%
	Caucasian/White	60	14	8	82	73.9%
	Unknown/Not reported		1		1	0.9%
Gender						
	Female	30	7	2	39	35.1%
	Male	54	9	9	72	64.9%
Total Faculty		84	16	11	111	100.0%

¹Academic Administrators include Deans, Associate Deans, Department Chairs, and Academic Directors.
Source: Academic Affairs



College of Social Sciences Fall 2016 Faculty Profile

		Teaching Faculty		Administrators		Total	Percent
		Full time	Part time	General ¹	Academic ²		
Rank							
	Professor	11		1	6	18	18.2%
	Associate Professor	13		1	4	18	18.2%
	Assistant Professor	25			1	26	26.3%
	Instructor	10	14			24	24.2%
	Lecturer	12			1	13	13.1%
Highest Degree Earned							
	Doctorate	53	3	2	11	69	69.7%
	Masters or EDS	18	10		1	29	29.3%
	Professional Bachelor		1			1	1.0%
Tenure Status							
	Tenured	24		2	9	35	35.3%
	Tenure track	24			2	26	26.3%
	Non-tenure track	23	14		1	38	38.4%
Ethnicity							
	Black or African American	8	2		2	12	12.0%
	American Indian or Alaskan Native						0.0%
	Asian	3				3	3.0%
	Native Hawaiian/Oher Pacific Islander						0.0%
	Hispanic or Latino	1			1	2	2.0%
	Two or more races	1				1	1.0%
	Caucasian/White	57	12	2	9	80	81.0%
	Unknown/Not reported	1				1	1.0%
Gender							
	Female	34	5	1	6	46	46.5%
	Male	37	9	1	6	53	53.5%
Total Faculty		71	14	2	12	99	100.0%

¹General Administrators include the Interim Association Vice President for Academic Affairs and the Associate Vice President of Institutional Effectiveness and Assessment.

²Academic Administrators include Deans, Associate Deans, Department Chairs, and Academic Directors.

Source: Academic Affairs



Richards College of Business Fall 2016 Faculty Profile

		Teaching Faculty		Administrators	Total	Percent
		Full time	Part time	Academic ¹		
Rank						
	Professor	20		6	26	40.0%
	Associate Professor	10			10	15.4%
	Assistant Professor	5			5	7.7%
	Instructor		9		9	13.8%
	Lecturer	14		1	15	23.1%
Highest Degree Earned						
	Doctorate	38	4	6	48	73.8%
	Master's or EDS	11	5	1	17	26.2%
	Professional Bach					0.0%
Tenure Status						
	Tenure	31		6	37	56.9%
	Not on Tenure Track	14	9	1	24	36.9%
	Tenure - Track	4			4	6.2%
Ethnicity						
	African American/Black	2		1	3	4.6%
	American Indian or Alaskan					0.0%
	Asian	11		1	12	18.4%
	Native Hawaiian or Pacific Islander					0.0%
	Hispanic	4			4	6.2%
	Multi-racial					0.0%
	Caucasian/White	32	9	5	46	70.8%
	Unknown					0.0%
Gender						
	Female	21	3	2	26	40.0%
	Male	28	6	5	39	60.0%
Total Faculty		49	9	7	65	100.0%

¹Academic Administrators include Deans, Associate Deans, Department Chairs, and Academic Directors.
Source: Academic Affairs



Tanner Health System School of Nursing Fall 2016 Faculty Profile

	Teaching Faculty		Administrators	Total	Percent
	Full time	Part time	Academic ¹		
Rank					
Professor	1		3	4	8.2%
Associate Professor	3		1	4	8.2%
Assistant Professor	18		4	22	44.8%
Instructor		19		19	38.8%
Lecturer					0.0%
Highest Degree Earned					
Doctorate	11		5	16	32.7%
Masters or EDS	11	10	3	24	48.9%
Professional Bachelor		9		9	18.4%
Tenure Status					
Tenured	1		4	5	10.2%
Tenure track	10		2	12	24.5%
Non-tenure track	11	19	2	32	65.3%
Ethnicity					
Black or African American	2	9		11	22.5%
American Indian or Alaskan Native					0.0%
Asian	1			1	2.0%
Native Hawaiian/Other Pacific Islander					0.0%
Hispanic or Latino			1	1	2.0%
Two or more races					0.0%
Caucasian/White	19	9	7	35	71.5%
Unknown/ Not reported		1		1	2.0%
Gender					
Female	22	17	8	47	95.9%
Male		2		2	4.1%
Total Faculty	22	19	8	49	100.0%

¹Academic Administrators include Deans, Associate Deans, Department Chairs, and Academic Directors.
Source: Academic Affairs



Irvine S. Ingram Library Fall 2016 Faculty Profile

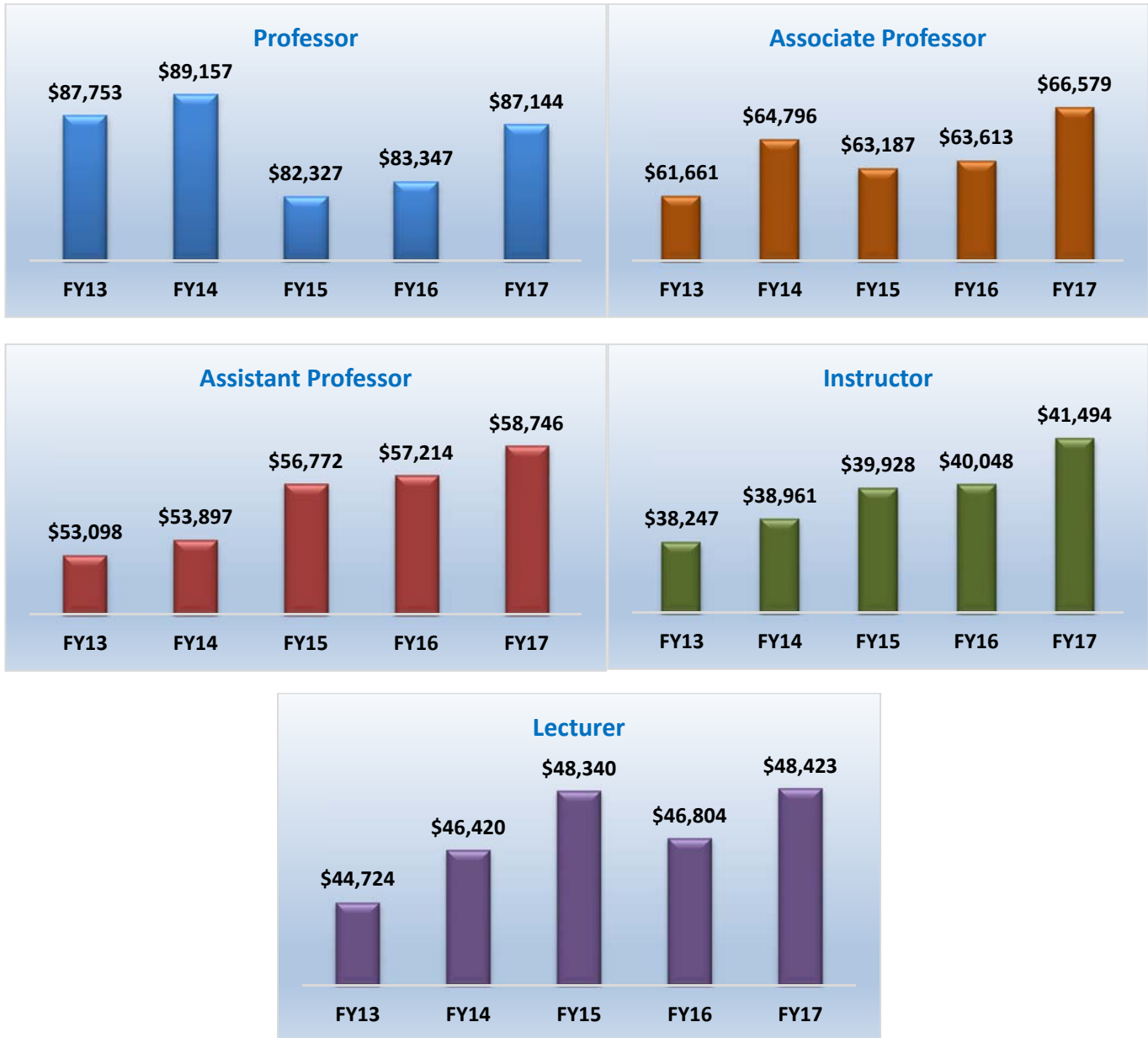
		Teaching Faculty		Administrators	Total	Percent
		Full time	Part time	Academic ¹		
Rank						
	Professor	1		1	2	11.1%
	Associate Professor	5		1	6	33.3%
	Assistant Professor	8			8	44.5%
	Instructor		2		2	11.1%
	Lecturer					0.0%
Highest Degree Earned						
	Doctorate	1			1	5.6%
	Masters or EDS	13	2	2	17	94.4%
	Professional Bachelor					0.0%
Tenure Status						
	Tenure	7		2	9	50.0%
	Tenure track	7			7	38.9%
	Non-tenure track		2		2	11.1%
Ethnicity						
	Black or African American					0.0%
	American Indian or Alaskan Native					0.0%
	Asian					0.0%
	Native Hawaiian/Other Pacific Islander					0.0%
	Hispanic or Latino					0.0%
	Two or more races					0.0%
	Caucasian/White	12	2	2	16	88.9%
	Unknown/ Not reported	2			2	11.1%
Gender						
	Female	12	2	1	15	83.3%
	Male	2		1	3	16.7%
Total Faculty		14	2	2	18	100.0%

¹Academic Administrators include the Dean and Associate Dean.

Source: Academic Affairs



Average Faculty Salary Fiscal Years 2013–2017



Source: Academic Affairs



Average Salary by Employee Category Fiscal Years 2013-2017

Faculty	FY 2013		FY 2014		FY 2015		FY 2016		FY 2017	
	Number	Average	Number	Average	Number	Average	Number	Average	Number	Average
*Professor	104	\$87,753	112	\$ 89,157	115	\$89,157	120	\$83,347	124	\$ 87,144
Associate Professor	107	\$61,661	110	\$ 64,796	116	\$63,187	115	\$63,613	120	\$ 66,579
Assistant Professor	146	\$53,098	156	\$ 53,897	126	\$56,772	141	\$57,214	138	\$ 58,746
Instructor	74	\$38,247	63	\$ 38,961	78	\$39,928	79	\$40,048	77	\$ 41,494
Lecturer	47	\$44,724	51	\$ 46,420	65	\$48,340	54	\$46,804	61	\$ 48,423
All Faculty	478	\$57,097	492	\$ 61,512	500	\$62,000	509	\$62,000	520	\$63,560
Staff	FY 2013		FY 2014		FY 2015		FY 2016		FY 2017	
	Number	Average	Number	Average	Number	Average	Number	Average	Number	Average
Administrative	410	\$53,137	416	\$ 51,635	464	\$53,730	507	\$55,018	558	\$ 55,560
Clerical	214	\$29,204	210	\$ 30,091	216	\$30,863	213	\$31,007	241	\$ 31,643
Maintenance	155	\$25,225	170	\$ 27,146	177	\$28,674	179	\$29,086	334	\$ 24,758
All Staff	779	\$41,009	796	\$40,721	857	\$42,791	899	\$44,166	1,133	\$ 41,392

Note: Faculty totals include all full-time teaching faculty, librarians, and other (f-t) faculty with temporary appointments. Fiscal Year 2017, staff totals include temporary appointments.

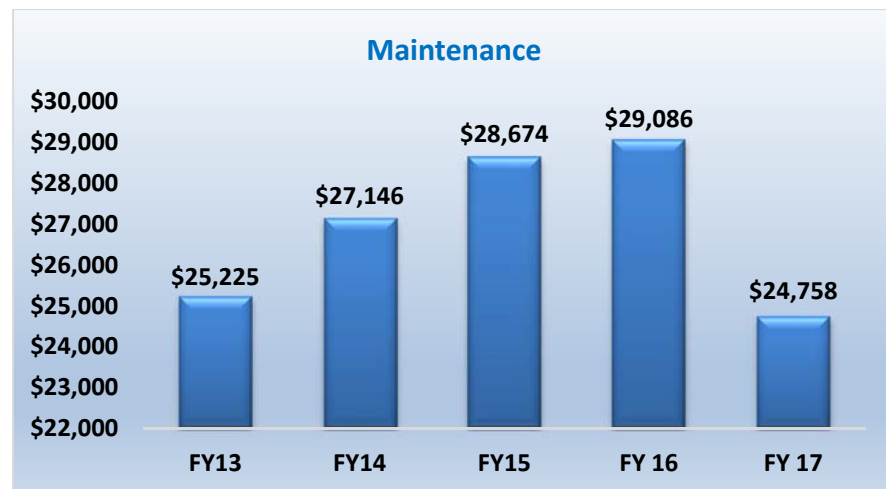
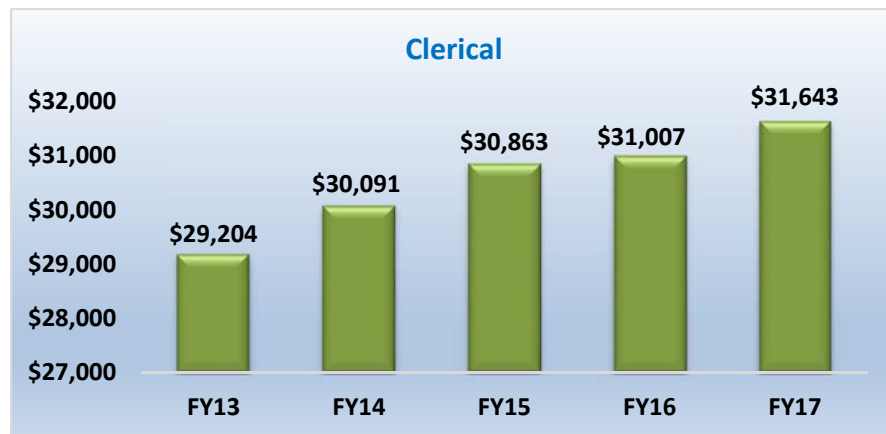
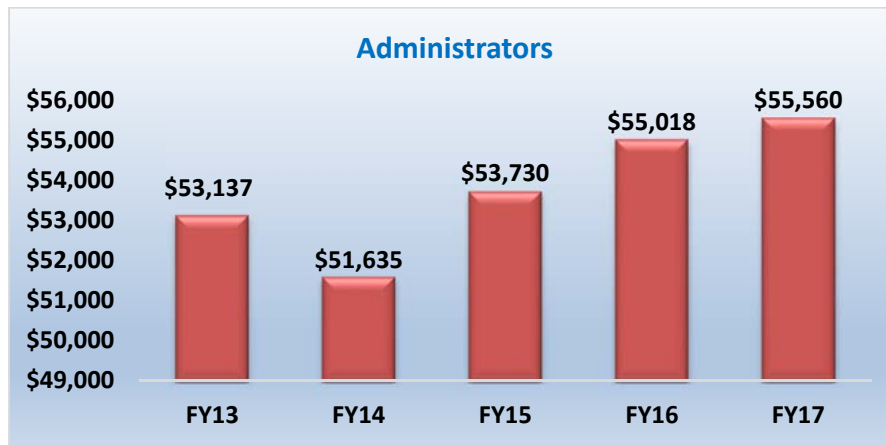
*This category includes 'Regent's Professor' salary for Fiscal Years 2015, 2016, 2017.

Source: Academic Affairs and Human Resources





Average Staff Salary Fiscal Years 2013-2017



Source: Human Resources



Financial Information





UWG Operating Expenses

	July 1, 2016	June 30, 2016
Operating Expenses	Budgeted	Actual
Salaries:		
Faculty	\$ 41,751,954	\$40,341,480
Staff	48,008,034	43,832,303
Benefits	30,621,958	27,451,873
Other Personal Services	6,919,985	719,388
Travel	1,473,375	1,648,050
Scholarships and Fellowships	5,512,896	10,945,580
Utilities	2,211,165	3,562,788
Supplies and Other Services	42,182,612	46,661,087
Depreciation/Equipment	15,415,820	13,928,608
Unallocated	<u>1,854,385</u>	<u>-</u>
Total Operating Expenses	195,952,184	189,091,157
Non-Operating Expenses		
Interest Expense (Capital Assets)	-	9,273,518
Total Expenses	<u>\$ 195,952,184</u>	<u>\$ 198,364,675</u>

EXPENSES BY CLASSIFICATION		
	July 1, 2016	June 30, 2016
Operating Expenses	Budgeted	Actual
Instruction	\$ 71,801,324	\$69,332,995
College of Arts & Humanities	10,447,642	10,861,283
College of Science & Mathematics	9,690,124	10,427,246
College of Social Sciences	7,684,558	8,039,156
Richards College of Business	8,292,098	8,347,660
College of Education	8,494,916	8,923,973
School of Nursing	4,095,539	4,371,299
Other Instruction	<u>23,096,447</u>	<u>18,362,378</u>
Research	1,415,703	1,887,065
Public Service	401,282	378,081
Academic Support	18,009,272	18,073,565
Student Services (Excl Fund 13000)	11,934,043	10,940,989
Student Activities (Fund 13000)	4,062,535	2,817,899
Intramural	-	52,966
Social & Entertainment Activities	-	800,894
Student Government	-	25,961
Student Publications	-	43,671
Scholarships, Study Abroad	140,010	124,313
Other Programs/Unassigned ¹	<u>3,922,525</u>	<u>1,770,094</u>
Institutional Support	23,712,054	18,158,761
Plant Operations and Maintenance	10,592,394	17,959,457
Safety and Security	2,274,621	2,327,526
Scholarships and Fellowships	3,835,347	8,369,523
Auxiliary Enterprises	47,913,609	38,845,296
Student Housing	19,373,797	14,054,120
Food Services	12,493,852	9,999,285
Stores and Shops	4,002,456	3,460,478
Intercollegiate Athletics	5,445,543	4,733,215
Scholarships, Athletic	1,437,539	1,494,216
Other Service Units	<u>5,160,422</u>	<u>5,103,982</u>
Unallocated Expenses	-	-
Total Operating Expenses	195,952,184	189,091,157
Non-Operating Expenses		
Interest Expense (Capital Assets)	-	9,273,518
Total Expenses	<u>\$ 195,952,184</u>	<u>\$ 198,364,675</u>

-Includes resident instruction, auxiliary, student activities, continuing education, indirect revenue, and technology fees.

-Graduate Assistants salaries are included in staff salaries.

Source: Budget Services



UWG Operating Expenses Continued

<i>June 30, 2015</i>	
Operating Expenses	Actual
Salaries:	
Faculty	\$38,943,726
Staff	41,154,074
Benefits	24,326,891
Other Personal Services	712,365
Travel	1,631,879
Scholarships and Fellowships	10,405,503
Utilities	4,109,156
Supplies and Other Services	44,044,243
Depreciation/Equipment	13,121,727
Unallocated	-
Total Operating Expenses	178,449,564
Non-Operating Expenses	
Interest Expense (Capital Assets)	9,441,848
Total Expenses	\$ 187,891,412

EXPENSES BY CLASSIFICATION	
<i>June 30, 2015</i>	
Operating Expenses	Actual
Instruction	\$65,340,064
College of Arts & Humanities	10,527,974
College of Science & Mathematics	9,902,027
College of Social Sciences	7,815,724
Richards College of Business	8,539,491
College of Education	8,696,963
School of Nursing	4,596,404
Other Instruction	15,261,481
Research	2,028,282
Public Service	278,710
Academic Support	18,206,308
Student Services (Excl Fund 13000)	10,388,947
Student Activities (Fund 13000)	2,722,605
Intramural	55,025
Social & Entertainment Activities	929,459
Student Government	28,235
Student Publications	39,660
Scholarships, Study Abroad	121,027
Other Programs/Unassigned ¹	1,549,199
Institutional Support	16,840,459
Plant Operations and Maintenance	14,974,267
Safety and Security	2,116,774
Scholarships and Fellowships	8,738,903
Auxiliary Enterprises	36,814,245
Student Housing	13,956,077
Food Services	8,836,758
Stores and Shops	3,671,564
Intercollegiate Athletics	4,217,241
Scholarships, Athletic	1,351,428
Other Service Units	4,781,177
Unallocated Expenses	-
Total Operating Expenses	178,449,564
Non-Operating Expenses	
Interest Expense (Capital Assets)	9,441,848
Total Expenses	\$ 187,891,412



University Revenue by Source

	<i>July 1, 2016 Budgeted</i>	<i>June 30, 2016 Actual</i>	<i>June 30, 2015 Actual</i>
Operating Revenue			
Tuition and Fees	\$ 78,931,611	\$ 85,339,772	\$ 78,052,355
Less: Scholarship allowances	\$ (19,211,954)	\$ (20,771,810)	\$ (19,053,249)
Grants and Contracts			
Federal	\$ -	\$ 1,711,758	\$ 1,939,988
State	\$ -	\$ 642,596	\$ 718,124
Other	\$ -	\$ 1,589,267	\$ 1,519,158
Sales and Services	\$ 360,060	\$ 656,927	\$ 624,058
Rents and Royalties	\$ 110,730	\$ 24,245	\$ 28,423
Auxiliary			
Residence Halls	\$ 19,373,797	\$ 18,651,073	\$ 17,503,426
Bookstore	\$ 4,002,456	\$ 3,619,895	\$ 3,795,456
Food Services	\$ 12,493,852	\$ 9,420,722	\$ 8,649,169
Parking/Transportation	\$ 1,800,974	\$ 1,680,710	\$ 1,352,546
Health Services	\$ 2,350,953	\$ 2,281,657	\$ 2,213,631
Intercollegiate Athletics	\$ 6,808,082	\$ 6,917,505	\$ 5,820,746
Other Organizations	\$ 1,008,495	\$ 351,791	\$ 366,730
Other	\$ 9,567,955	\$ 10,474,306	\$ 7,936,161
Total Operating Revenue	\$ 117,597,011	\$ 122,590,414	\$ 111,466,722
Non-Operating Revenue			
State Appropriations	\$ 52,597,218	\$ 49,871,591	\$ 48,167,093
Grants and Contracts	\$ 25,198,694	\$ 24,256,354	\$ 23,427,009
Gifts	\$ 285,251	\$ 664,517	\$ 630,620
Investment Income	\$ 74,010	\$ 187,473	\$ 73,022
Other	\$ 200,000	\$ (95,973)	\$ 452,772
Total Nonoperating Revenue	\$ 78,355,173	\$ 74,883,962	\$ 72,750,516
Capital Gifts and Grants			
State	\$ -	\$ 4,840,073	\$ 1,847,418
Other Capital Gifts and Grants	\$ -	\$ 455,544	\$ 19,001,637
Total Capital Gifts and Grants	\$ -	\$ 5,295,617	\$ 20,849,055
Total Revenues	\$ 195,952,184	\$ 202,769,993	\$ 205,066,293

-Includes internal revenue, special initiative, departmental sales and service, and sponsored operations.

-Grants and contracts does not include federal tuition scholarships.

Source: Budget Services



Total Resident Instruction Expenditures Per Full-time Equivalent Student Fiscal Years 2013-2017

<i>Fiscal Year</i>	<i>*Resident Instruction Expenditures</i>	<i>**Fall Term FTE Enrollment</i>	<i>Total Expenditures per FTE Student</i>
2012	\$121,754,826	10,575	\$11,514
2013	\$129,776,019	10,638	\$12,200
2014	\$141,825,281	10,845	\$13,078
2015	\$148,354,562	11,077	\$13,394
2016	\$156,701,480	11,877	\$13,194

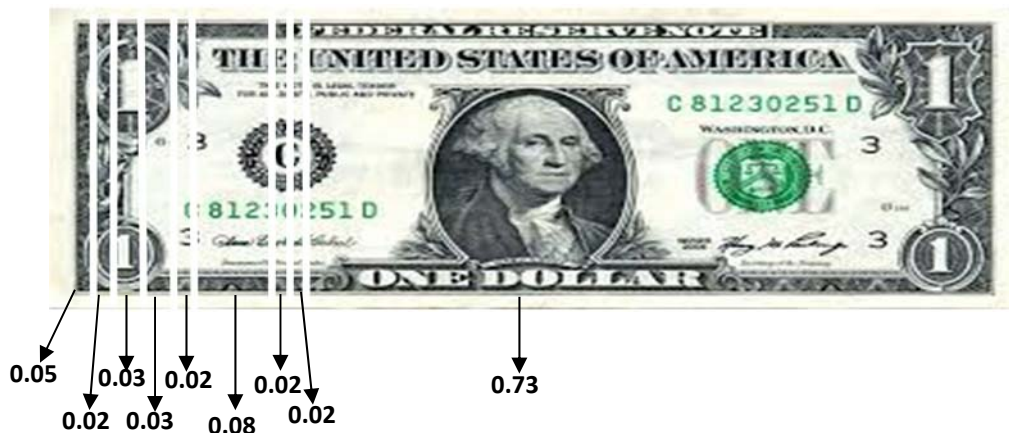
Note: All Resident Instruction Expenditures are actual not budgeted.

*Calculated as Total Operating Expenses per Annual Financial Report less Auxiliary Services and Student Activities.

**Official Census Data submitted to the University System of Georgia.

Student Dollar Distribution Fall 2016

Athletic Fee	0.05
Facility Fee – Athletic Complex	0.02
Facility Fee – Campus Center	0.03
Health Fee	0.03
Parking and Transportation Fee	0.02
Special Institutional Fee	0.08
Student Activity Fee	0.02
Technology Fee	0.02
Tuition	0.73
Total	1.00



Source: Budget Services



UWG Condensed Statement of Net Assets Fiscal Years 2015-2016

Assets	2015	2016
Current Assets	\$ 50,934,903	\$ 56,101,466
Capital Assets, net	309,419,932	306,272,607
Other Assets	14,299,215	17,715,779
Total Assets	374,654,050	380,089,852
Liabilities		
Current Liabilities	16,396,881	18,012,065
Noncurrent Liabilities	234,495,325	232,079,848
Total Liabilities	250,892,206	250,091,913
Net Assets		
Invested in Capital Assets, net of debt	134,774,177	135,399,912
Restricted - expendable	3,166,466	3,446,952
Unrestricted	(14,178,799)	(8,848,925)
Total Net Assets	\$ 123,761,844	\$ 129,997,939

Assets are cash, investments, receivables, prepaid items, inventories, capital equipment, etc.

Liabilities are accounts payable, deposits from others to the University (i.e. deposits for room rentals, breakage, etc.), and payroll deductions.

Fiscal Year 2016 Assets



Source: Budget Services



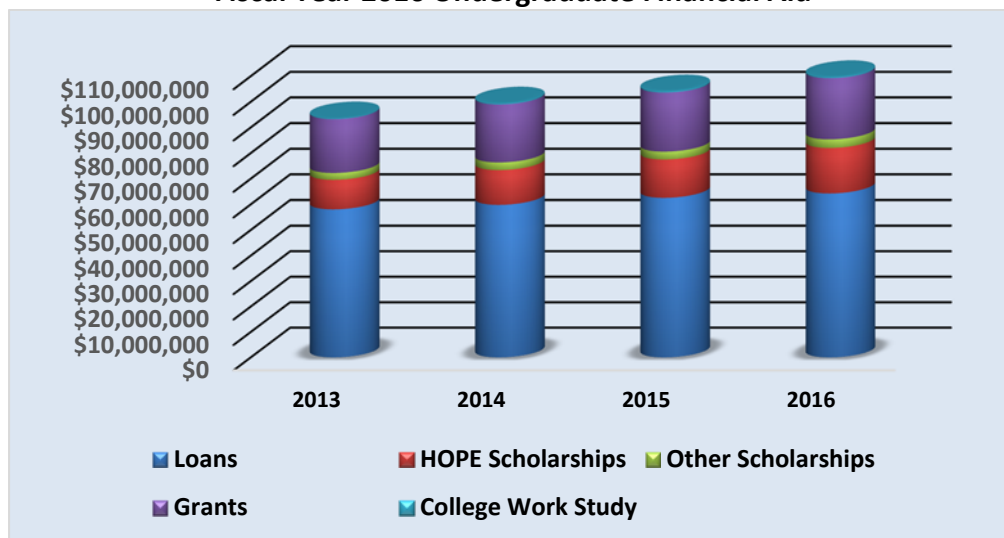
Undergraduate Student Financial Aid Fiscal Years 2013–2016

Undergraduate	2013		2014		2015		2016	
	No. of Awards*	Amount	No. of Awards*	Amount	No. of Awards*	Amount	No. of Awards*	Amount
Loans								
Perkins	68	\$114,025	12	\$23,150	76	\$175,781	38	\$87,922
Ford Direct Stafford	7,188	\$49,270,261	7,177	\$48,811,500	7,302	\$49,177,258	7,425	\$47,546,206
PLUS	809	\$6,658,311	975	\$8,738,591	1,235	\$11,043,494	1,601	\$14,488,261
UWG Emergency	335	\$187,061	382	\$223,262	366	\$200,230	342	\$184,078
Private	266	\$1,840,895	257	\$2,019,146	260	\$1,969,519	252	\$1,968,434
Total	8,666	\$58,070,553	8,803	\$59,815,649	9,239	\$62,566,282	9,658	\$64,274,901
Scholarships								
Institutional	676	\$1,860,612	687	\$1,976,554	675	\$1,999,626	770	\$2,189,655
Private	539	\$778,453	614	\$981,656	595	\$1,035,953	572	\$1,129,998
State	16	\$40,500	14	\$39,166	13	\$39,083	13	\$55,239
Total	1,231	\$2,679,565	1,315	\$2,997,376	1,283	\$3,074,662	1,355	\$3,374,892
Grants								
Hope	3,481	\$11,516,228	3,854	\$13,572,821	4,049	\$14,952,158	4,805	\$17,740,443
Pell	5,249	\$20,811,558	5,552	\$22,369,050	5,505	\$22,710,082	5,626	\$23,497,593
SEOG	272	\$191,364	388	\$242,933	493	\$318,815	504	\$355,650
Total	9,002	\$32,519,150	9,794	\$36,184,804	10,047	\$37,981,055	10,935	\$41,593,686
Federal Programs								
College Work Study	210	\$291,797	263	\$429,257	317	\$530,666	305	\$494,397
Americorps	3	\$7,820	6	\$14,540	6	\$17,990	4	\$9,026
Total	213	\$299,617	269	\$443,797	323	\$548,656	309	\$503,423
Grand Total	19,112	\$93,568,885	20,181	\$99,441,626	20,892	\$104,170,655	22,257	\$109,746,902

*Awards may represent duplicated headcount because some students received more than one type of financial aid.

Note: Amounts are rounded to the nearest dollar.

Fiscal Year 2016 Undergraduate Financial Aid



*Unduplicated headcount within categories of aid.

Source: Student Affairs and Enrollment Management



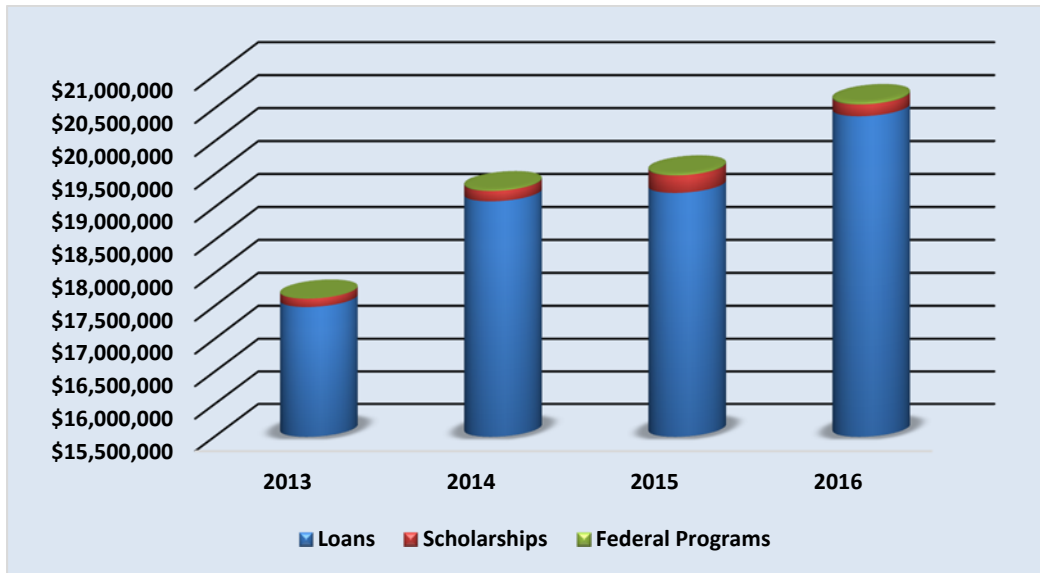
Graduate Student Financial Aid Fiscal Years 2013–2016

Graduate	2013		2014		2015		2016	
	No. of Awards*	Amount	No. of Awards*	Amount	No. of Awards*	Amount	No. of Awards*	Amount
Loans								
Perkins	4	\$10,279	1	\$4,000	4	\$7,300	0	\$0
Ford Direct Stafford	1,363	\$17,185,321	1,451	\$18,707,965	1,505	\$18,839,592	1,544	\$19,802,201
GRAD PLUS	16	\$105,002	33	\$223,927	29	\$220,982	19	\$111,617
Short-Term Loans	73	\$47,550	75	\$45,326	75	\$45,475	64	\$36,100
Private	22	\$139,479	20	\$110,170	20	\$105,534	18	\$128,865
Total	1,478	\$17,487,631	1,580	\$19,091,388	1,633	\$19,218,883	1,645	\$20,078,783
Scholarships								
Institutional	62	\$92,695	60	\$86,151	53	\$75,109	55	\$142,587
Private	38	\$34,503	51	\$72,200	54	\$103,751	32	\$123,655
Total	100	\$127,198	111	\$158,351	107	\$178,860	87	\$266,242
Federal Programs								
Work Study	3	\$2,982	5	\$11,322	12	\$18,276	8	\$11,662
Americorps	1	\$2,212	6	\$12,738	5	\$11,293	8	\$26,246
Total	4	\$5,194	11	\$24,060	17	\$29,569	16	\$37,908
Grand Total	1,582	\$17,620,023	1,702	\$19,273,799	1,757	\$19,427,312	1,748	\$20,382,933

*Awards may represent duplicated headcount, some students received more than one type of financial aid.

Note: Amounts are rounded to the nearest dollar.

Fiscal Year 2016 Graduate Financial Aid



Source: Student Affairs and Enrollment Management



Research and Sponsored Projects

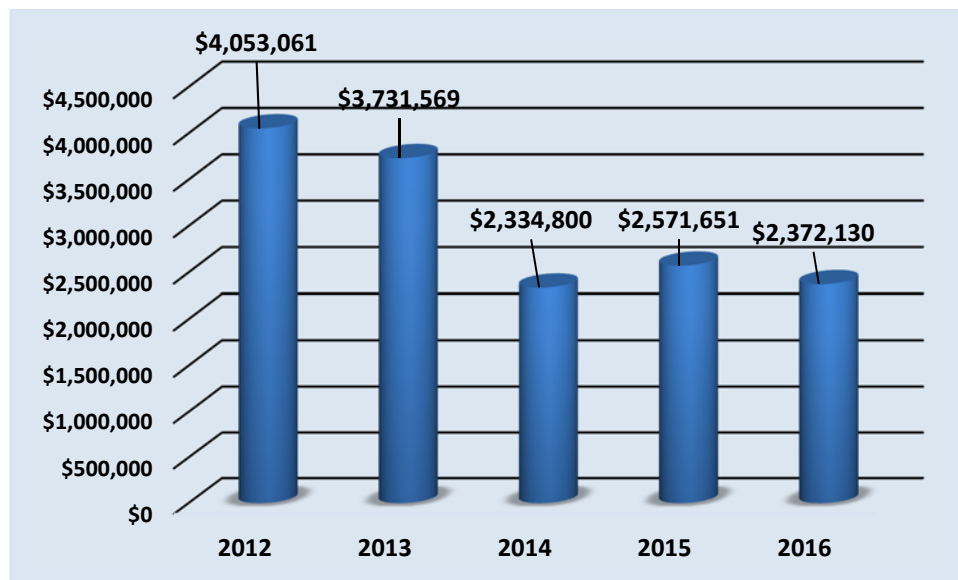
In Fiscal Year 2016 the University of West Georgia was reimbursed \$220,181 in Facilities and Administrative Costs incurred by sponsored grants and contracts. Of the recovered costs, \$21,944 were returned to Project Investigators (PIs), \$10,690 to the Colleges, and \$10,446 to the departments for research.

Sponsored Projects Metrics Fiscal Years 2012–2016

Fiscal Year	Number of Proposals	Number of Proposals	Amount	Amount Awarded
	Submitted	Funded	Requested	
2012	63	59	\$10,642,057	\$4,053,061
2013	85	48	\$8,923,279	\$3,731,569
2014	66	31	\$8,375,571	\$2,334,800
2015	54	26	\$5,595,903	\$2,571,651
2016	65	29	\$6,106,239	\$2,372,130

Note: the amounts exclude financial aid awards for students.

Amount Awarded



Source: Research and Sponsored Projects



The Presidential Development Awards Fiscal Year 2016

In addition to resources from external sources, the University budgets state-allocated funds and some of the indirect costs to assist faculty research through the Faculty Research Grant Program. The program provides limited seed funding for approved research projects to spur research, generate preliminary data, and lead to follow-on external funding.

College of Arts and Humanities

Dr. Keith Bohannon

The Destruction of Confederate Government Records at the end of the U.S. Civil War
\$700

Dr. Muriel Cormican

Sex, Gender and Videotape: Love, Eroticism, and Romance in East Germany
\$700

Dr. Yvonne Fuentes

Attend the 14th International Congress for Eighteenth-Century Studies
\$700

Dr. Joshua Masters

Archival Research on Flannery O'Connor at the Ina Dillard Library, Milledgeville
\$1,500

Mark Schoon and Casey McGuire

The Great Moon Hoax: Science and the Recreation of the Artificial
\$2,000

Dr. Timothy Schroer

Germany in the Boxer Conflict: State, Society, Empire, and the Rule of Law
\$2,000

College of Education

Dr. Danilo Baylen

Mobile Technology Adoption for Education in Foreign Countries
\$3,590

Dr. Jennifer Edelman

Preparation and retention of preservice secondary STEM teachers
\$3,500



The Presidential Development Awards Fiscal Year 2016

College of Science and Mathematics

Dr. Megumi Fujita

Indole-pyridine couples as metal ion sensors
\$5,000

Dr. Janet Genz

Dietary and energetic requirements of a threatened fish species, *Acipenser Fulvescens*
\$1,650

Dr. Melissa Johnson

Mitogen-activated protein kinase phosphate-1 (MKP-1) regulation of olfactory system function
\$2,500

Dr. Martin McPhail

Impact of Sulfur Precursor Reactivity of Mechanisms of Lead Sulfide Quantum Dot Nucleation and Growth
\$4,000

Dr. Sara Molesworth-Kenyon

Role of IL-1 alpha in the Production of MIG during the Inflammatory Response to Herpes Simplex Virus
\$5,000

Dr. Nicholas Sterling

Heavy Element Abundances in Astrophysical Nebulae
\$3,200

College of Social Sciences

Dr. Lisa Gezon and Dr. Winston Tripp

Health and Environmental Effects of the Greenbelt in Carrollton, GA
\$3,000

Dr. Tugce Kurtis

Collective Memory and National Identity
\$3,900

Dr. Emily McKendry-Smith

Stigma and Sanctity: The Experiences of Hindu Widows Living at Holy Sites
\$3,560

Drs. Ashley Smallwood and Thomas Jennings

Archaeological Field School to Search for Georgia's Early Prehistoric Record
\$500

Dr. Winston Tripp

Analyzing Social Factors affecting Wildland Forest Fire Management
\$3,000

Source: Research and Sponsored Projects



UWG Fund Raising 2012 - 2016

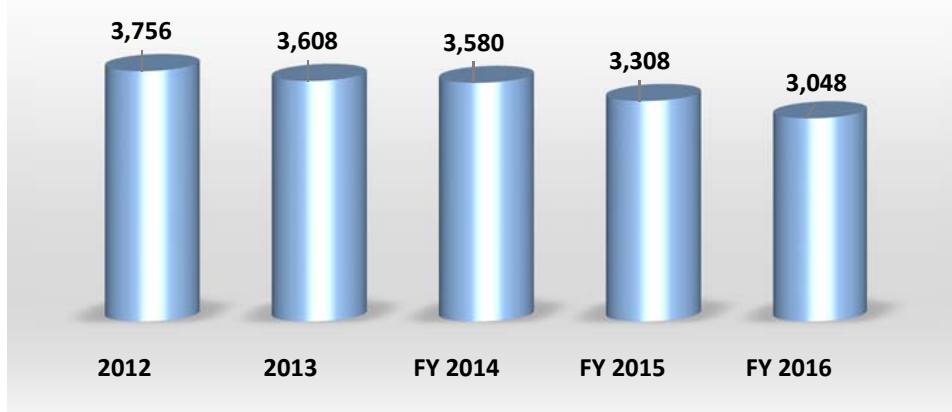
The Division of University Advancement (UA) works to secure the support and financial resources needed to create an environment that supports the pursuit of scholarly achievement, creative expression, and service to humanity for UWG students.

*Donor Dollars

	2012	2013	FY 2014	FY 2015	FY 2016
Secured Gifts	\$1,176,528	\$1,431,095	\$1,342,964	\$1,525,066	\$1,685,441
Secured Pledges	\$1,120,711	\$2,362,511	\$4,629,004	\$1,526,649	\$2,199,156
Gifts-in-kind	\$164,453	\$76,348	\$76,308	\$66,332	\$1,841,105
Planned Gifts Booked (Face Value)	\$408,702	\$2,850,000	\$450,000	\$4,790,931	\$1,275,000
Total	\$2,870,394	\$6,719,954	\$6,498,276	\$7,908,978	\$7,000,702

Note: Numbers are rounded to the nearest dollar.

*Number of Donors



*Beginning July 1, 2013, the reporting periods changed from calendar year to fiscal year.

Note: Fiscal Year - July 1 through June 30

Source: Development and Alumni Relations