

MATH 1111 - College Algebra

Hours Credit: 3 hours

Prerequisites: None

COURSE INSTRUCTOR

Instructor: Sonal Patel

Office: Room # 106A, Boyd Building

Email: spatel@westga.edu

Phone: (678) 839 – 4123

Classroom: Room # 306, Boyd Building

Class time: 1:00pm - 4:25pm

OFFICE HOURS: MTWTF before or after the class

Courses Description:

This course is a functional approach to algebra that incorporates the use of technology. Emphasis will be placed on the study of functions, and their graphs, inequalities, and linear, quadratic, piece-wise defined, polynomial, rational, exponential and logarithmic functions. Appropriate applications will be included.

Learning Outcomes:

Students should be able to demonstrate:

1. Express relationships using the concept of a function and use verbal, numerical, graphical and symbolic means to analyze a function.
2. Model situations from a variety of settings by using polynomial, exponential and logarithmic functions.
3. Manipulate mathematical information, concepts, and thoughts in verbal, numeric, graphical and symbolic form while solving a variety of problems which involve polynomial, exponential or logarithmic functions.
4. Apply a variety of problem-solving strategies, including verbal, algebraic, numerical, and graphical techniques, to solve multiple-step problems involving polynomial, exponential, logarithmic equations and inequalities and systems of linear equations.
5. Shift among the verbal, numeric, graphical and symbolic modes in order to analyze functions.
6. Use appropriate technology in the evaluation, analysis and synthesis of information in problem-solving situations.

Required Materials:

Course Materials: Textbook: Eleven editions, Essentials of College Algebra (Pearson Education)
ISBN # 978-0-321-91225-1.

You do not have to purchase a hard copy of the textbook since an e-book is available on MyMathLab.

Free Textbook: College Algebra and Trigonometry, Abramson, Openstax. Student can download for free at <https://openstax.org/details/books/algebra-and-trigonometry>. Students should go to “Download a PDF” and download the High Resolution version.

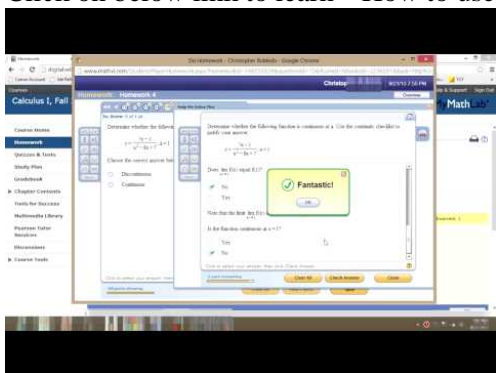
Online Resources: www.khanacademy.org

Calculator: A graphing calculator (TI – 83/84 or equivalent) is required for this course.

Access to Course Compass (MyMathLab): Please visit <http://www.pearsonmylabandmastering.com/northamerica/?cc> to register as a student in order to get access to this course. You will need the following required items as well:

- **Valid Email address:** This is the email address used by the instructor to communicate with students. Please check it daily.
- **MyMathLab Registration Instruction:** <C:\Users\spatel\Desktop\Math 1111 - MML Registration Instructions.pdf>
- **Course ID:** patel80141

- Click on below link to learn “ How to use MyMathLab” : <https://youtu.be/sZU4ivx7VF8>



- Student Access Code (must be purchased by students online at <http://www.pearsonmylabandmastering.com/northamerica/?cc> or at one of the following Mercer University bookstores: Macon, Atlanta, Henry County, or Douglas County)
- **Temporary Access to the course:** Students can obtain temporary access to the course for a maximum of 14 days if they are not able to purchase the access code immediately.
- **Getting Started in MyMathLab:** After successful completion of registration process, please check for system requirements and login to your course.
- **Browser Check:** The first time you use MyMathLab on any computer, it is very important to run the Browser Check to install the plug-ins and players you need to access the multimedia content in your course.
- **Technical Support:** Please visit http://247pearsoned.custhelp.com/cgi-bin/247pearsoned.cfg/php/enduser/home.php?p_sid=1Tav-9Qj or call 1-888-695-6577, M – F, 8:00am to 8:00pm for any issues related to MyMathLab only.
- **Required components for using MyMathLab:** a) a Java/JavaScript enabled browser (<http://www.java.com/en/download/index.jsp>), and b) Acrobat Reader (<http://www.adobe.com/products/acrobat/readstep2.html>)

Components for Evaluation:

Proctored Midterm in MyMathlab: On Friday 5/18, we will have our Midterm that will be taken in class. It will cover Chapter – 1 and 2. No make-up Midterm exam.

Proctored Final Exam in MyMathLab: On Friday 5/25, we will have our Final that will be taken in class. It will cover all of the chapters we get to. No make-up final exam.

Date: Friday, May 25th
Time: 2:30 pm - 4:30 pm
Classroom: 306, Boyd Building

Online Quizzes:

All quizzes will be open on 11th May and due by 25th May at 11:59pm in MyMathLab. You have 2 attempts with 75 min to complete each quiz. One lowest quiz score will be dropped. You have total four quizzes.

Classroom worksheet:

All chapter work sheets are available on courseden. You need to print all and bring it all on every day of class. You will work independently on work sheet in classroom period. Worksheets are due by 25th May before you take final exam. You should submit worksheet first and then take final exam.

Grade Breakdown:

Proctored Midterm in MML: 15%
Online quizzes: 30%

Proctored Final Exam in MML: 25%
Classroom worksheet: 30%

Final Grade determined as follows:

90 – 100	A
80 – 89.9	B
70 – 79.9	C
60 – 69.9	D
<60	F

Important Dates:

First day of class:	11 th May 2018
Midterm Exam:	18 th May 2018
Last Day of Class:	25 th May 2018
Final Exam:	25 th May 2018

Course Rules, Guideline and Policy:

Format: In addition to in-class instructional activities, the course materials including an e-book, PowerPoint presentations, videos, homework, and quizzes will be available online in MYMATHLAB. You can watch the videos, complete PowerPoint presentations (possibly multiple times), and develop your own study plan before doing homework and quizzes online. Having access to a high speed internet service is extremely important. Video will be available on course den for each chapter.

Attendance: Your weekly log in to MyMathLab, at least one assignment on MyMathLab is necessary to show participation on the class.

Make up of Tests/Quizzes: Permissible only in exceptional cases, but you should initiate coordination with the instructor to do so ASAP. All the make-up tests should be taken within one week from the original date. No make-up for the final exam.

Quizzes, and Tests:

- Online quizzes will be available in MyMathLab. Students are only allowed TWO attempts (if you don't like your score on the first attempt, you can retake the ENTIRE quiz a second time) and the computer will select the higher of the two scores and enter it into the final grade calculation for the course. All quizzes are open book and notes.
- Students will have only ONE attempt on the test. No makeup test is allowed.

Questions about grading: You can view your overall grade in MyMathLab. Overall grade represents your grade in the course.

Email: If using email, you must use your **university email** (@westga.edu) for any communication; also check your university email account for any announcement regarding the class. I will not respond to any non-university emails.

Assistant: If you find yourself falling behind in the course, do not delay in seeking out assistance and/or advice from someone (the Instructor, a tutor, etc.) who is competent in the subject area and who has your best interests at heart! **The Math Tutoring Center is in Boyd #205 and is open daily at the posted times.**

Disabilities: Students with a documented disability may work with UWG Accessibility Services to receive essential services specific to their disability. All entitlements to accommodations are based on documentation and USG Board of Regents standards. If you need course adaptations or accommodations because of a disability or chronic illness, or if you need to make special arrangements in case the building must be evacuated, you should notify me in writing and provide a copy of your Student Accommodations Report (SAR), which is available only from Accessibility Services. I cannot offer accommodations without timely receipt of the SAR; further, no retroactive accommodations will be given.

Special Note:

- You may click the following to view University of West Georgia Syllabus Policies.
<http://tinyurl.com/UWGSyllabusPolicies>.
- You can find all of your scores including Quiz, Homework, Test, Final, and the overall Total score under
<https://westga.view.usg.edu/>.
- Common language of course syllabi:
<https://www.westga.edu/administration/vpaa/common-language-course-syllabi.php>
- Please carefully review the following Common Language for all university course syllabi at the link:

[https://www.westga.edu/administration/vpaa/assets/docs/facultyresources/common language for course syllabi v2.pdf](https://www.westga.edu/administration/vpaa/assets/docs/facultyresources/common_language_for_course_syllabi_v2.pdf)

It contains important material pertaining to university policies and responsibilities. Because these statements are updated as federal, state, university, and accreditation standards change, you should review the information each semester.

Student Conduct

Students are expected to abide by the guidelines detailed in the university catalog. Respect and courtesy are required of all students while in the classroom. The following is also mandatory: