

MATH 1001L – Support for Quantitative Skills and Reasoning  
**Hours Credit:** 1 hour  
**Co-requisite:** MATH 1001

**COURSE INSTRUCTOR**

**Instructor:** Sonal Patel

**Email:** [spatel@westga.edu](mailto:spatel@westga.edu)

**MyMathLab Course ID:** patel57938 (Last name of instructor and then type 57938)

**Office Hours:** TTH 10:45 am – 12:30 pm and 3:15 pm – 4:00 pm by an appointment.

**Office:** Boyd Building, Room # 106 A

**Phone:** (678) 839 4123

**Description:** This Learning Support course is intended to provide corequisite support for students requiring remediation in mathematics while they are enrolled in MATH 1001 – Quantitative Reasoning. Topics will parallel topics being studied in MATH 1001 as well as the essential quantitative skills needed to be successful in MATH 1001. Taken with MATH 1001, topics to be covered will include logic, basic probability, data analysis and modeling from data.

**Required Materials:**

**Textbook: This is the same text you will need for MATH 1001.**

Blitzer, Robert, *Thinking Mathematically*, 6<sup>th</sup> Ed., Prentice Hall, 2015

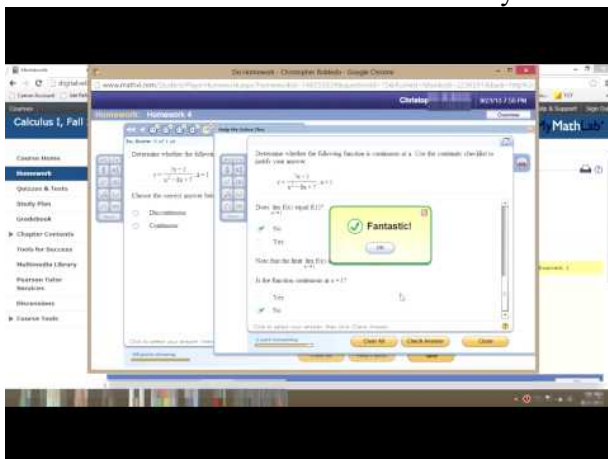
You do not have to purchase a hard copy of the textbook since an e-book is available on MyMathLab.

**Calculator:** TI-30XII or better.

**Access to Course Compass (MyMathLab):** Please visit

<http://www.pearsonmylabandmastering.com/northamerica/?cc> to register as a student in order to get access to this course. You will need the following required items as well:

- **Valid Email address:** This is the email address used by the instructor to communicate with students. Please check it daily.
- **MyMathLab Registration Instruction:** [Student Registration Handout patel59134.pdf](#)
- **Course ID:** patel57938
- Click on below link to learn “How to use MyMathLab”: <https://youtu.be/sZU4ivx7VF8>



- Student Access Code (must be purchased by students online at <http://www.pearsonmylabandmastering.com/northamerica/?cc> or at one of the following Mercer University bookstores: Macon, Atlanta, Henry County, or Douglas County)
- **Temporary Access to the course:** Students can obtain temporary access to the course for a maximum of 14 days if they are not able to purchase the access code immediately.
- Getting Started in MyMathLab: After successful completion of registration process, please check for system requirements and login to your course.
- **Browser Check:** The first time you use MyMathLab on any computer, it is very important to run the Browser Check to install the plug-ins and players you need to access the multimedia content in your course.
- **Technical Support:** Please visit [http://247pearsoned.custhelp.com/cgi-bin/247pearsoned.cfg/php/enduser/home.php?p\\_sid=1Tav-9Qj](http://247pearsoned.custhelp.com/cgi-bin/247pearsoned.cfg/php/enduser/home.php?p_sid=1Tav-9Qj) or call 1-888-695-6577, M – F, 8:00am to 8:00pm for any issues related to MyMathLab only.
- **Required components for using MyMathLab:** a) a Java/JavaScript enabled browser (<http://www.java.com/en/download/index.jsp>), and b) Acrobat Reader (<http://www.adobe.com/products/acrobat/readstep2.html>)

**Note:** We will access course den only on first week to begin our course. We will mainly use MyMathLab to access any online material, PowerPoints, Videos and announcements. You must become acquainted with MYMATHLAB syntax in order to enter answers in the correct format. Practice, practice, and more practice. For additional help, click on Chapter Contents in MYMATHLAB and then click on ‘How do I enter answers?’

### **LEARNING OUTCOMES: (same as MATH 1001)**

Upon successful completion of this course students will demonstrate the ability to:

1. Interpret a wide variety of quantitative information
2. Use mathematical reasoning to analyze quantitative information, and use it to reach conclusions in real-world contexts.
3. Understand how mathematics and quantitative reasoning are an integral part of society and history
4. Process information and develop procedures for solving problems.
5. Use different units and formats of numbers including metric system and percentages.
6. Understand and deal with uncertainty in mathematics
7. Be able to interpret and calculate financial information including interest and loans.
8. Understand and interpret statistical results found in the media and society.

### **COURSE ASSESSMENT**

70% of grade is based on MATH 1001. Students will receive full credit if they earn an A, B, C in MATH 1001. Students will receive no credit for any other grade. 30% of grade is based on daily assessments from MATH 1001L.

Grading Policy: Final grade will be based on the following scale:  
(A = 90 - 100%, B = 80 - <90%, C = 70 - <80%, F = <70).

Math 1001 Grade of A, B, or C (grade of D or F: 0%)	70%*
Chapter Worksheet	10%
Chapter Review Quiz	10%
Chapter Test	10%
	<hr/>
	Total 100%

\*Important: The 70% you receive from Math 1111 main course is all or nothing. If you have an A, B, or C in Math 1111 you will receive the full 70%. If not, you will receive 0%.

### IMPORTANT DATES:

<b><u>First Day of Class:</u></b>	Monday, January 7
<b><u>Drop Ends:</u></b>	Wednesday, January 9
<b><u>Last Day to Withdrawal with W:</u></b>	Wednesday, February 27
<b><u>Last Day of Class:</u></b>	Monday, April 29
<b><u>No classes:</u></b>	Monday, January 21 (MLK Day) Monday March 18 - Friday March 22 (Spring Break)

### **Course Rules, Guideline and Policy:**

**Format:** In addition to online learning activities, the course materials including an e-book, PowerPoint presentations, videos, worksheet, quizzes and tests will be available online in MYMATHLAB. You can watch the videos, complete PowerPoint presentations (possibly multiple times), and develop your own study plan before doing homework and quizzes online. Having access to a high speed internet service is extremely important. Video will be available on course den for each chapter.

**Attendance:** Your weekly log in to MyMathLab, at least one assignment on MyMathLab is necessary to show participation on the class.

**Make up of Tests/Quizzes:** Permissible only in exceptional cases, but you should initiate coordination with the instructor to do so ASAP.

### **Worksheets, Quizzes, and Tests:**

- Online Worksheet will be assigned in MyMathLab. You are expected to complete the worksheet on, or before, due dates. A worksheet that has not been attempted at all before the due date will be deemed past due and will receive a score of 0. (There is no limit on the number of attempts before the due date). All worksheets must be completed by midnight, April 29, 2019.
- Online quizzes will be available in MyMathLab. All quizzes are open book and notes. A quiz that has not been attempted at all before the due date will be deemed past due and will receive a score of 0. (There is no limit on the number of attempts before the due date). All quizzes must be completed by midnight, April 29, 2019
- Students will have only ONE attempt on the online chapter test. All tests must be completed by midnight, April 29, 2019. Time Duration: 75 mins. No makeup test is allowed.

**Questions about grading:** You can view your overall grade in MyMathLab.

**Email:** If using email, you must use your **university email** (@westga.edu) for any communication; also check your university email account for any announcement regarding the class. I will not respond to any non-university emails.

**Assistant:** If you find yourself falling behind in the course, do not delay in seeking out assistance and/or advice from someone (the Instructor, a tutor, etc.) who is competent in the subject area and who has your best interests at heart! **The Math Tutoring Center is in Boyd #205 and is open daily at the posted times.**

## **COURSE INFORMATION**

### **University Policies and Academic Support**

Please carefully review the following Common Language for all university course syllabi at the link:

<https://www.westga.edu/UWGSyllabusPolicies/>

It contains important material pertaining to university policies and responsibilities. Because these statements are updated as federal, state, university, and accreditation standards change, you should review the information each semester.

### **Academic Honesty**

Definitions of academic dishonesty are defined in the student handbook: [www.westga.edu/handbook/](http://www.westga.edu/handbook/)

### **Disabilities Act/Accessibility for the Course**

If you are a student whom is disabled as defined under the Americans with Disabilities Act and require assistance or support services, please notify me and provide me with a copy of your packet from Student Services. The university will provide you with resources for any audio/visual needs that you may have with the learning management system or course content.

Please contact UWG Accessibility Services for more information.